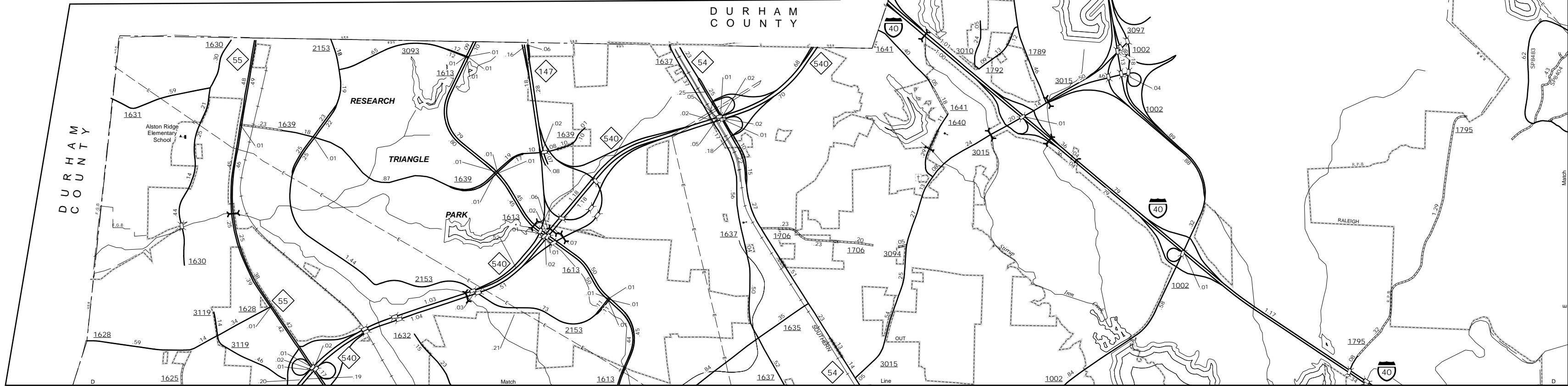


The MS&U's goal is to provide the most accurate and current information possible. Map data is compiled from numerous sources and is subject to change. As a result, the map may not reflect the most current information. For additional information, visit the MS&U's website at <http://www.ncdot.gov/transportation/MS&U> and click on Data Providers or contact us at (919) 835-3482.

COPIES OF THIS MAP ARE AVAILABLE  
FOR PURCHASE AT A SPECIAL  
ADDRESS.  
N.C. DEPARTMENT OF TRANSPORTATION  
MS&U - MAPPING SECTION  
4809 BERT LEO  
Raleigh, NC 27605



Wake Forest



Morrisville

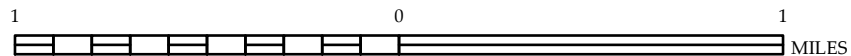


ENLARGED MUNICIPAL AND SUBURBAN AREAS

## WAKE COUNTY NORTH CAROLINA

PREPARED BY THE  
NORTH CAROLINA DEPARTMENT OF TRANSPORTATION  
MANAGEMENT SYSTEMS AND ASSESSMENTS UNIT - MAPPING SECTION  
IN COOPERATION WITH THE  
U.S. DEPARTMENT OF TRANSPORTATION  
FEDERAL HIGHWAY ADMINISTRATION

SCALE



10,000 FOOT GRID BASED ON NORTH CAROLINA PLANE COORDINATE SYSTEM  
LAMBERT CONFORMAL CONIC PROJECTION