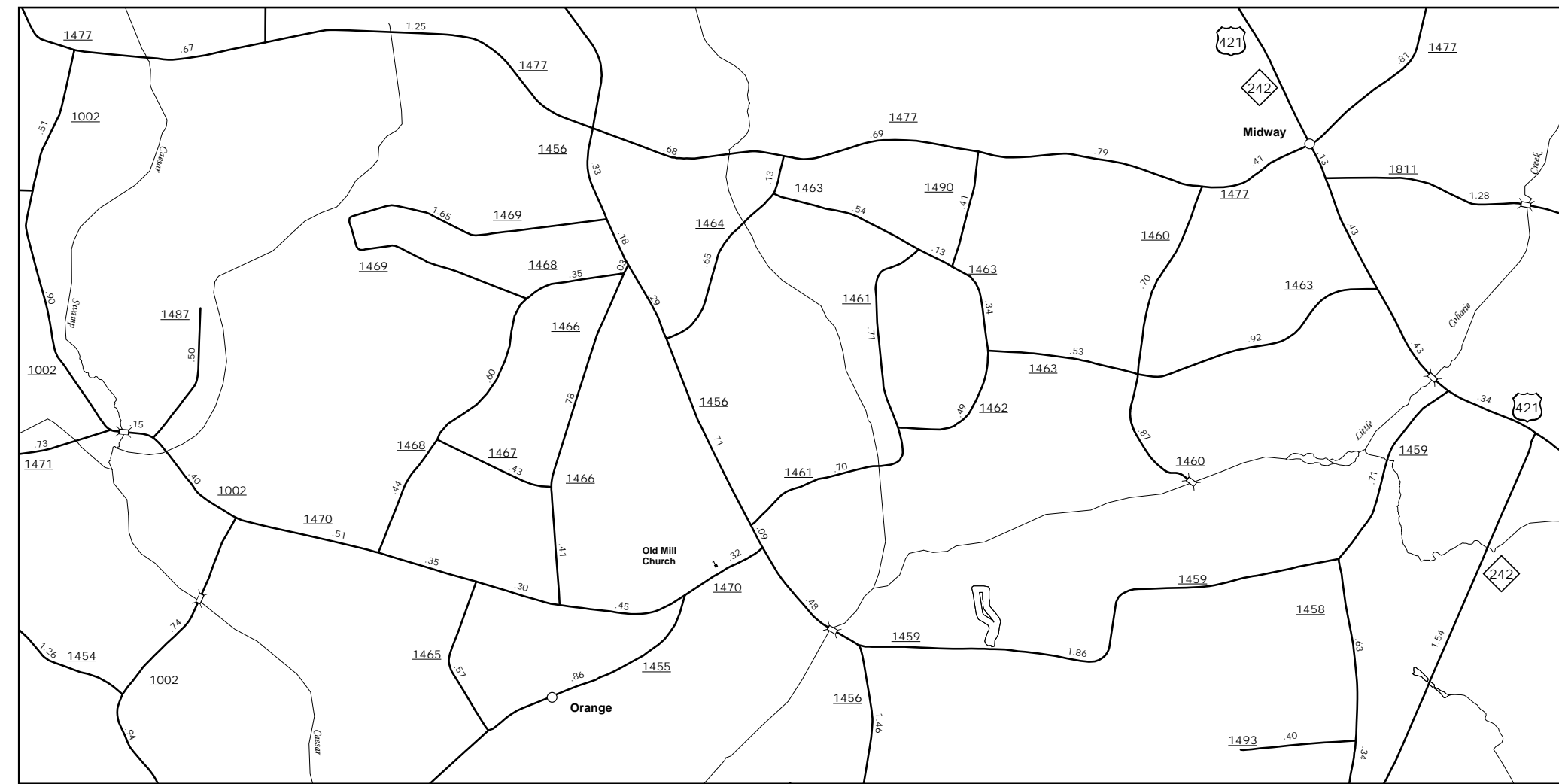
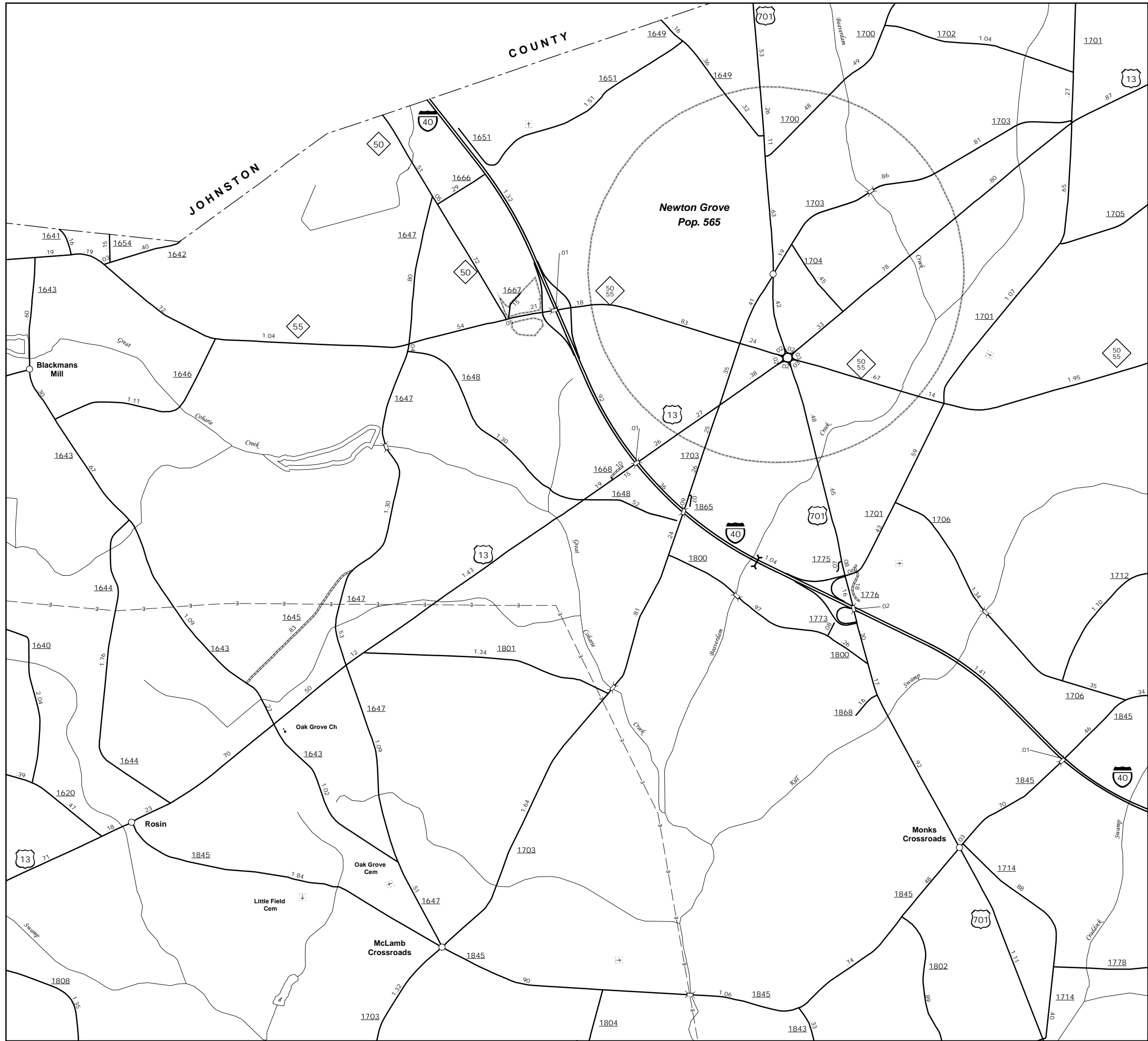


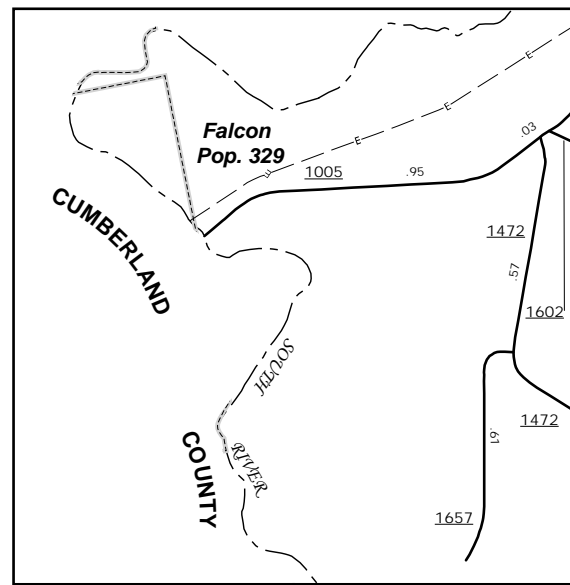
The MS&UT's goal is to provide the most accurate and current information possible. Map data is compiled from numerous sources including aerial photography, ground surveys, and other data. As a result, roads and other features may not always be shown in the most accurate manner. The MS&UT's goal is to provide the most accurate and current information possible. Map data is compiled from numerous sources including aerial photography, ground surveys, and other data. As a result, roads and other features may not always be shown in the most accurate manner. The MS&UT's goal is to provide the most accurate and current information possible. Map data is compiled from numerous sources including aerial photography, ground surveys, and other data. As a result, roads and other features may not always be shown in the most accurate manner.

COPIES OF THIS MAP ARE AVAILABLE
FROM THE NORTH CAROLINA DEPARTMENT OF TRANSPORTATION
ADDRESS: N.C. DEPARTMENT OF TRANSPORTATION
MS&UT - MAPS SECTION
4800 BERNARD
Raleigh, NC 27609

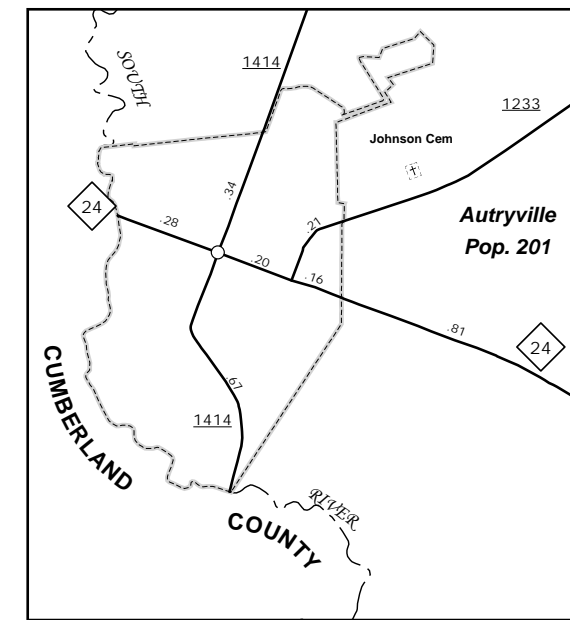


Newton Grove

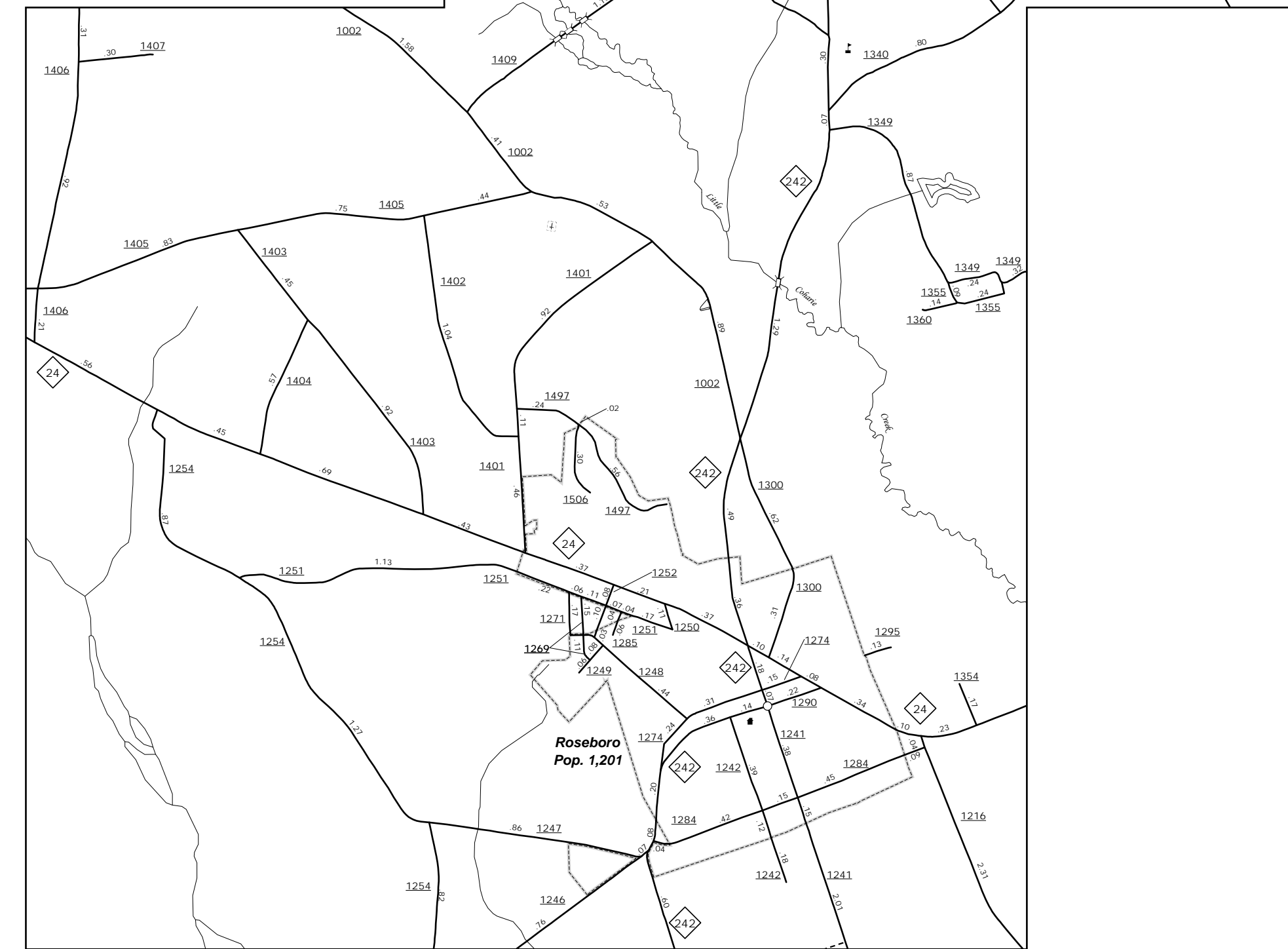
Midway



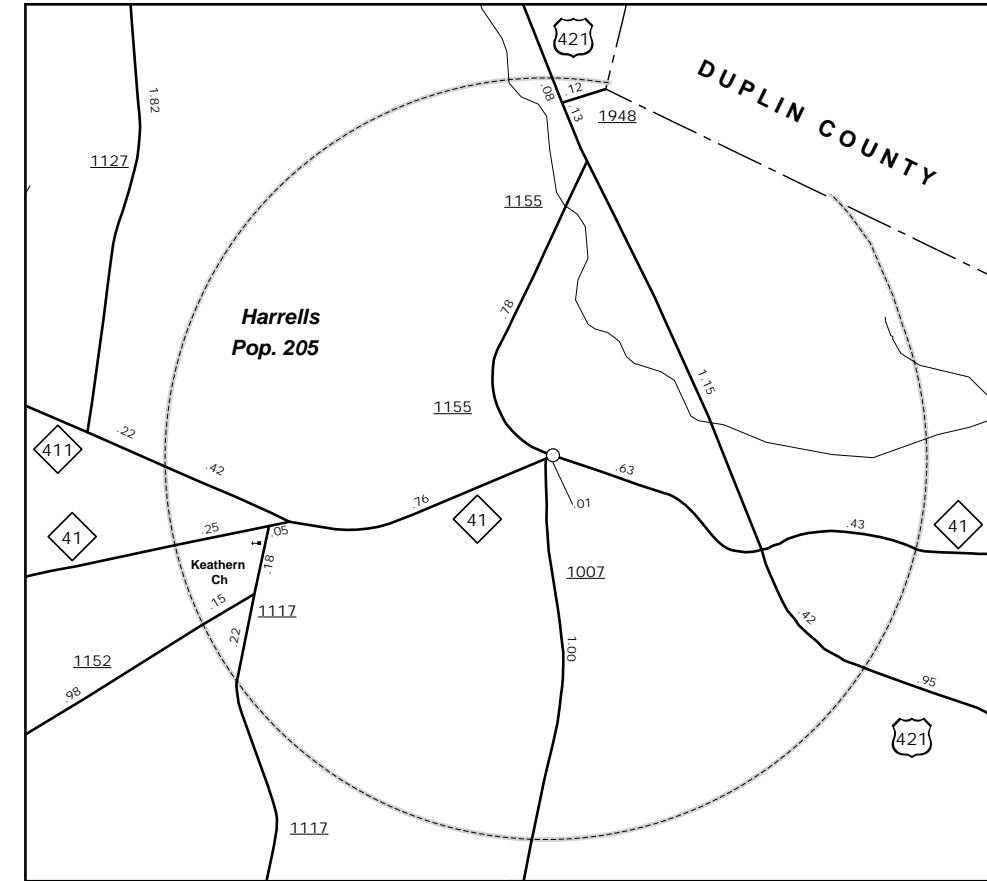
Falcon



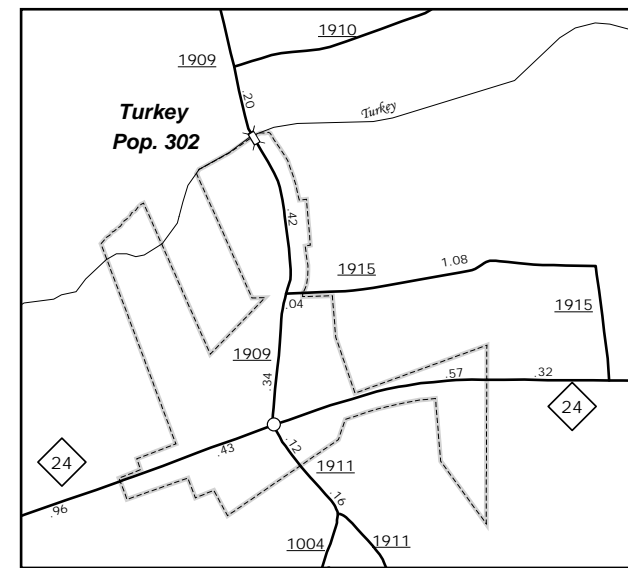
Autryville



Salem & Roseboro



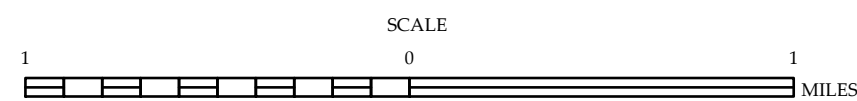
Harrells



Turkey



ENLARGED MUNICIPAL AND SUBURBAN AREAS
SAMPSON COUNTY
NORTH CAROLINA
PREPARED BY THE
NORTH CAROLINA DEPARTMENT OF TRANSPORTATION
MANAGEMENT SYSTEMS AND ASSESSMENT UNIT - MAPPING SECTION
IN COOPERATION WITH THE
U.S. DEPARTMENT OF TRANSPORTATION
FEDERAL HIGHWAY ADMINISTRATION



10,000 FOOT GRID BASED ON NORTH CAROLINA PLANE COORDINATE SYSTEM
LAMBERT CONFORMAL CONIC PROJECTION