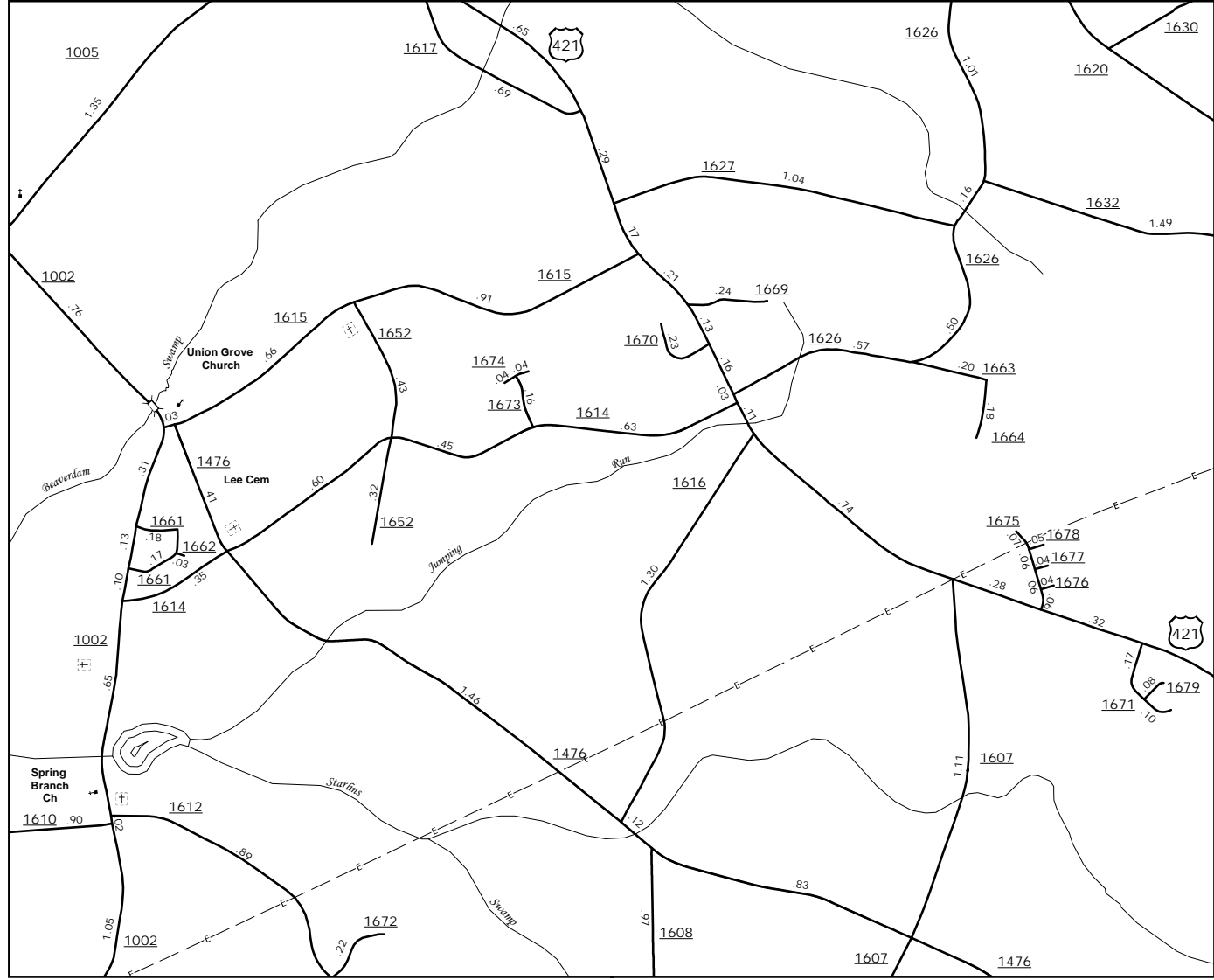


The MS&J's goal is to provide the most accurate and current information possible. Map data is compiled from numerous sources including aerial photography, ground surveys, and other data. As a result, roads and other features may not always be shown in the exact location or with the exact dimensions as they appear in reality. The MS&J's is not responsible for any errors or omissions. For additional information, visit <http://www.ncdot.gov/transportation/mapping>, and click on Data Providers or contact us at (819) 835-8480.

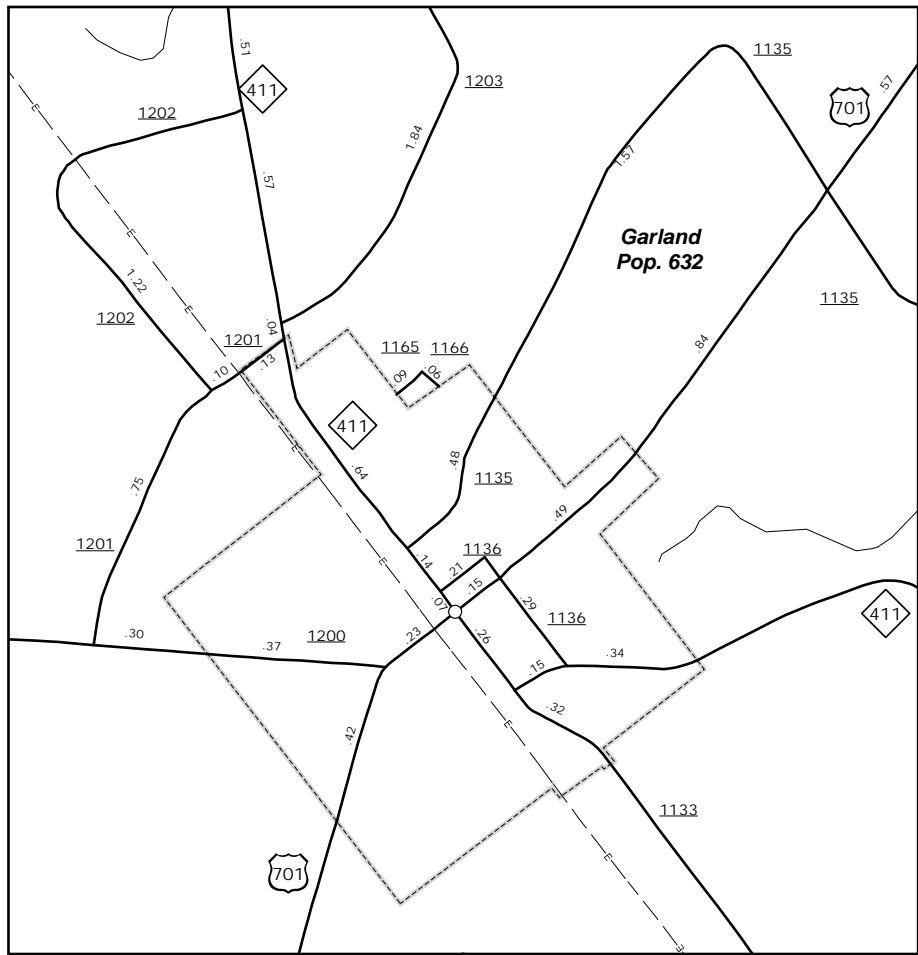
COPIES OF THIS MAP ARE AVAILABLE
FOR PURCHASE AT A PUBLIC AT NOMINAL COST.
ADDRESS: NORTH CAROLINA DEPARTMENT OF TRANSPORTATION
N.C. DEPARTMENT OF TRANSPORTATION
MS&J - MAPPING SECTION
489 BERN LEO
COLUMBIA, NC 28038



Clinton



Lee's Chapel Area

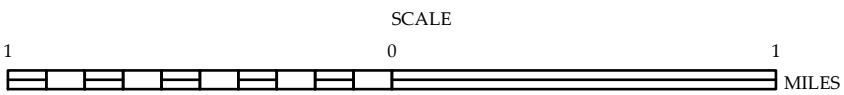


Garland



ENLARGED MUNICIPAL AND SUBURBAN AREAS
SAMPSON COUNTY
NORTH CAROLINA

PREPARED BY THE
NORTH CAROLINA DEPARTMENT OF TRANSPORTATION
MANAGEMENT SYSTEMS AND ASSESSMENT UNIT - MAPPING SECTION
IN COOPERATION WITH THE
U.S. DEPARTMENT OF TRANSPORTATION
FEDERAL HIGHWAY ADMINISTRATION



10,000 FOOT GRID BASED ON NORTH CAROLINA PLANE COORDINATE SYSTEM
LAMBERT CONFORMAL CONIC PROJECTION

SHEET 2 OF 3