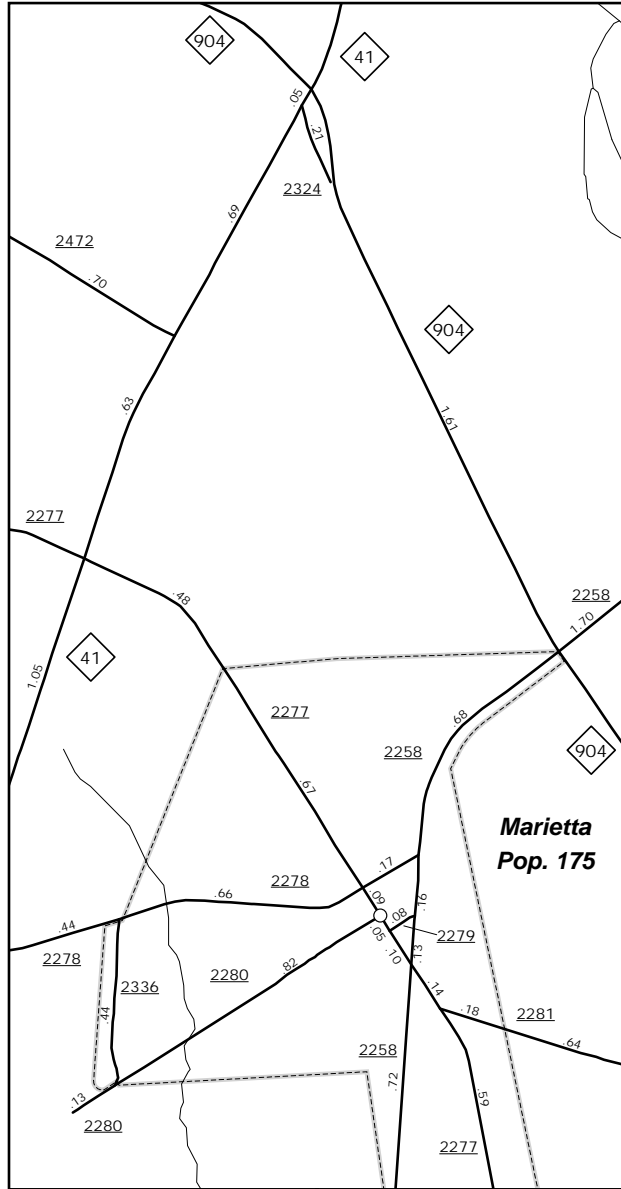
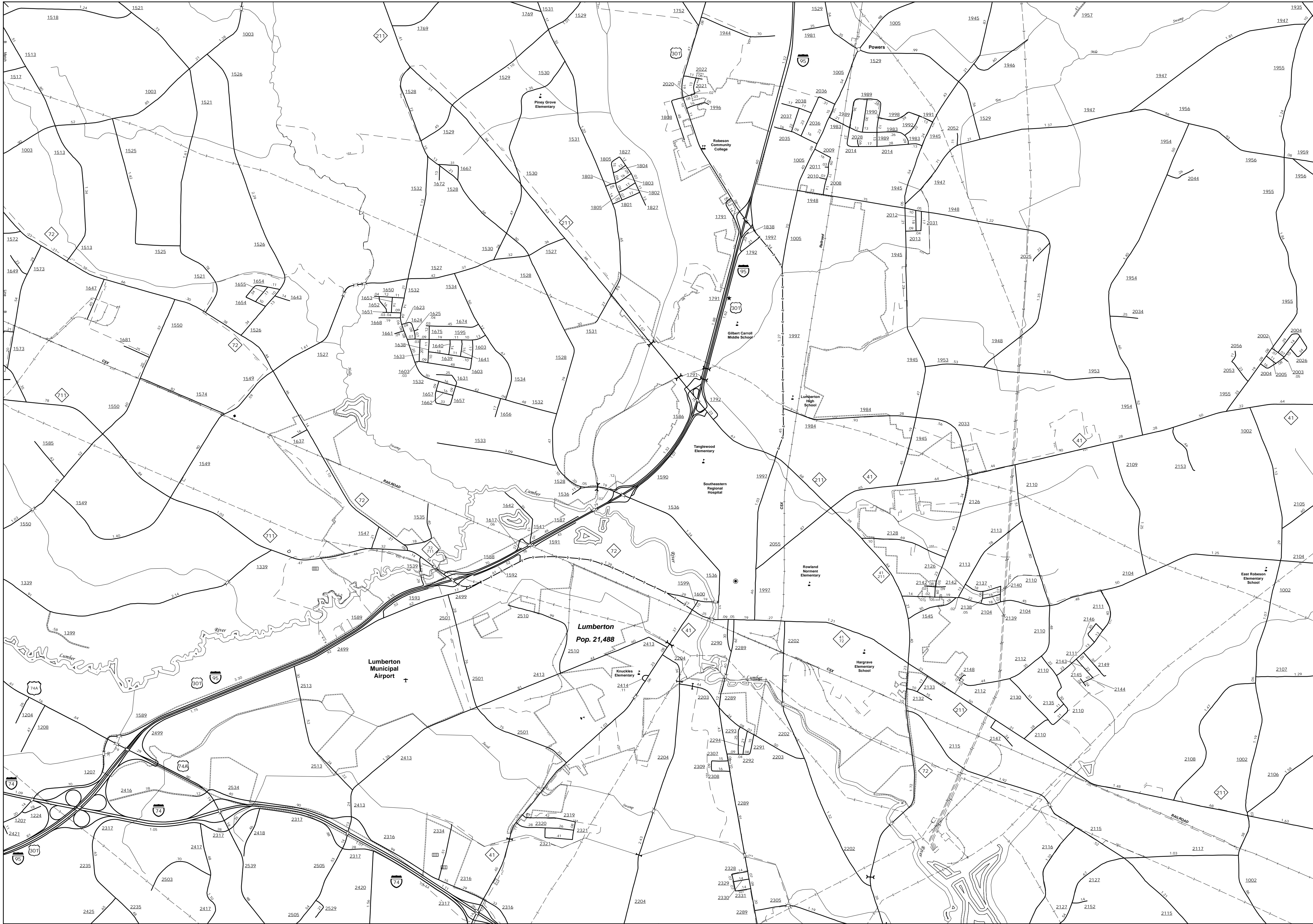
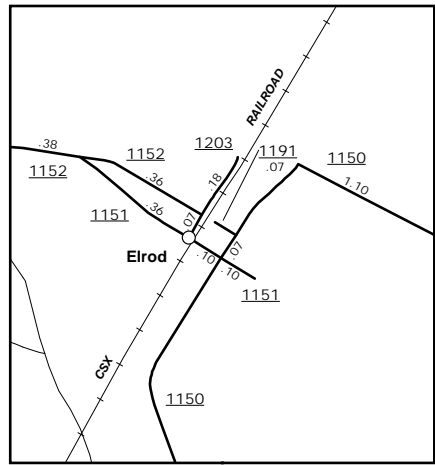


The MSAL's goal is to provide the most accurate and current information possible. Map data is compiled from numerous sources with varying degrees of accuracy and is not guaranteed. As a result, roads and other features may not be shown in the correct location or may not be shown at all. The MSAL is not responsible for any errors or omissions. For additional information, visit <http://www.ncdot.gov/transportation/MSAL> and click on Data Providers or contact us at (819) 835-8480.

COPIES OF THIS MAP ARE AVAILABLE
FROM THE NORTH CAROLINA DEPARTMENT OF TRANSPORTATION
ADDRESS: N.C. DEPARTMENT OF TRANSPORTATION
MSAL - MAPPING SECTION
4809 BERT RD.
COLUMBUS, NC 28035



Marietta



Elrod

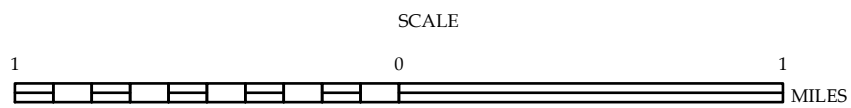


Lumberton

ENLARGED MUNICIPAL AND SUBURBAN AREAS

ROBESON COUNTY NORTH CAROLINA

PREPARED BY THE
NORTH CAROLINA DEPARTMENT OF TRANSPORTATION
MANAGEMENT SYSTEMS AND ASSESSMENTS UNIT - MAPPING SECTION
IN COOPERATION WITH THE
U.S. DEPARTMENT OF TRANSPORTATION
FEDERAL HIGHWAY ADMINISTRATION



10,000 FOOT GRID BASED ON NORTH CAROLINA PLANE COORDINATE SYSTEM
LAMBERT CONFORMAL CONIC PROJECTION