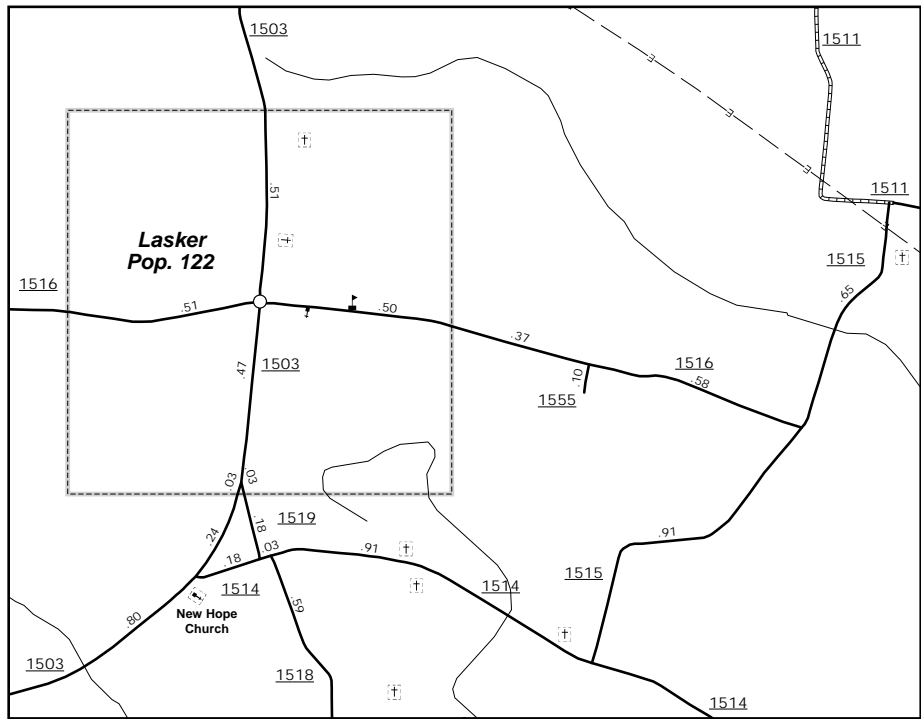
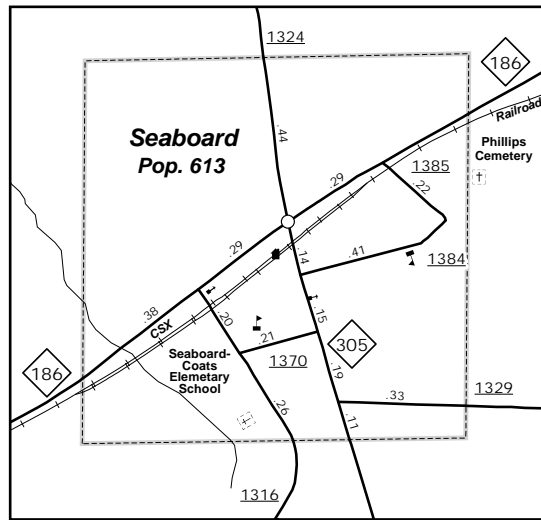


The MS&U's goal is to provide the most accurate and current information possible. Map data is compiled from numerous sources with varying degrees of responsibility and accuracy. As a result, roads and important non-system roads. This map was last updated on June, 2014. For additional information, visit <http://www.ncdot.gov/infrastructure/infrastructure> and click on Data Providers or contact us at (919) 855-4480.

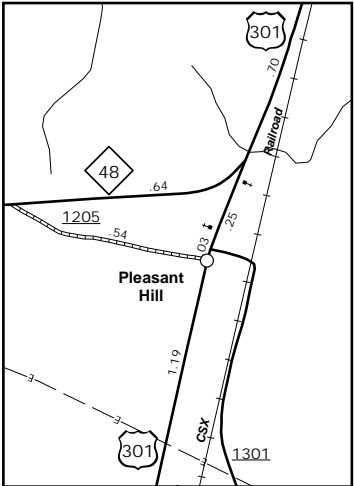
COPIES OF THIS MAP ARE AVAILABLE
FROM THE PUBLIC AT NOMINAL COST
ADDRESS: NORTH CAROLINA DEPARTMENT OF TRANSPORTATION
MS&U - MAPPING SECTION
4809 BERN LID
Raleigh, NC 27609



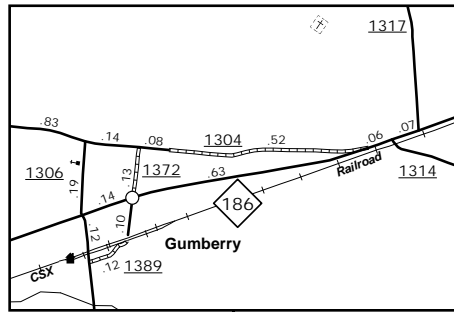
Lasker



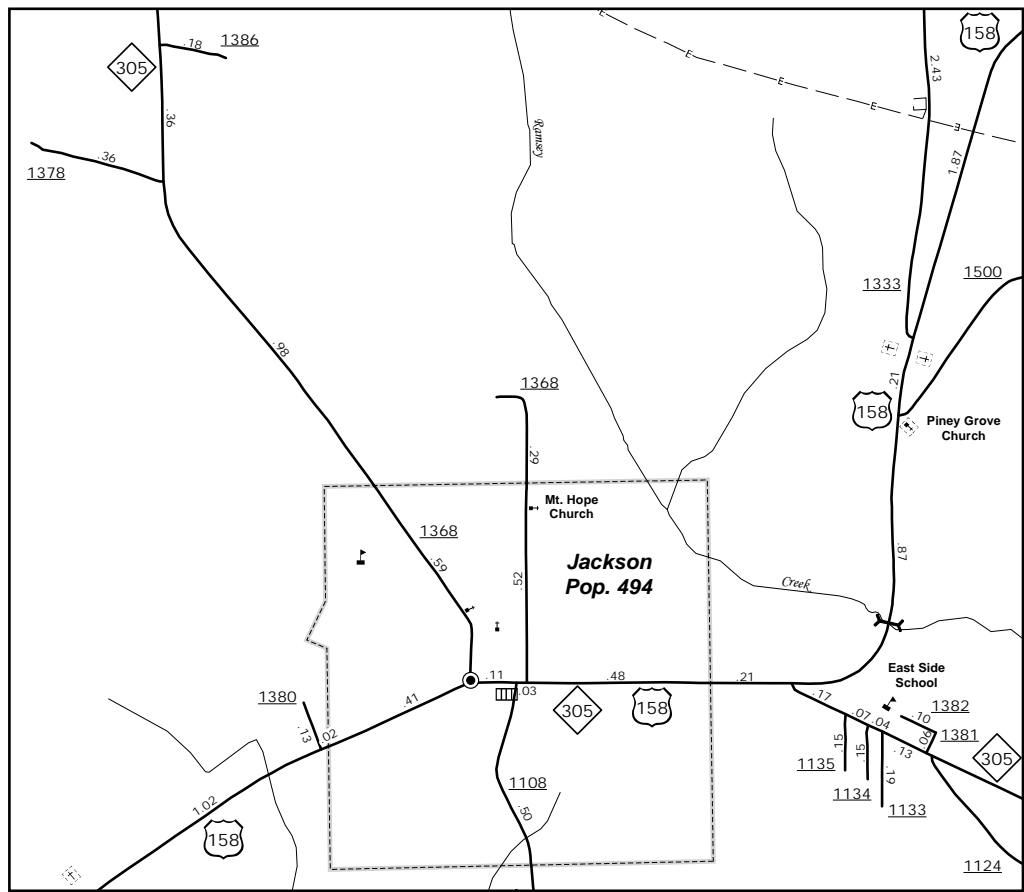
Seaboard



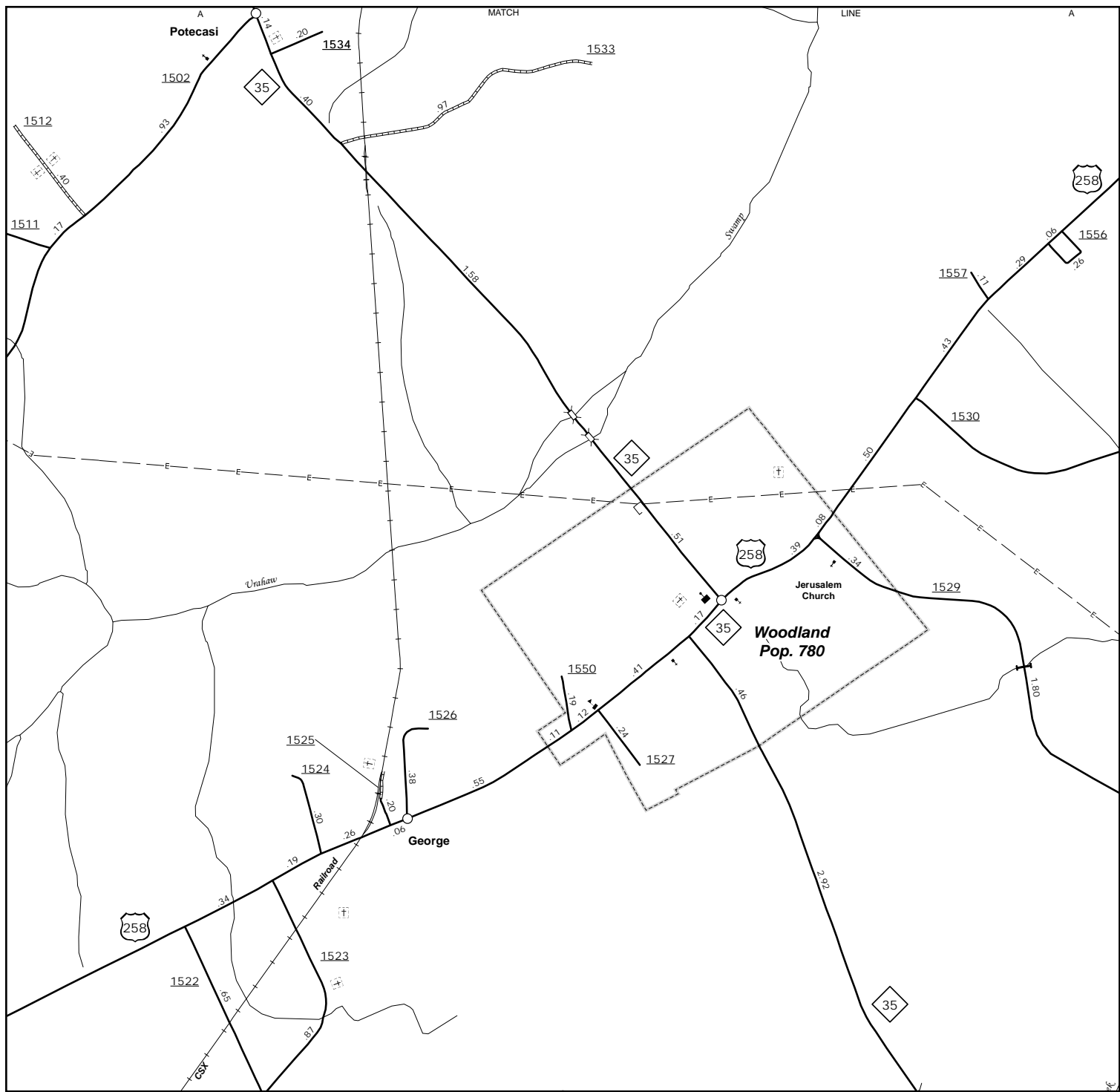
Pleasant Hill



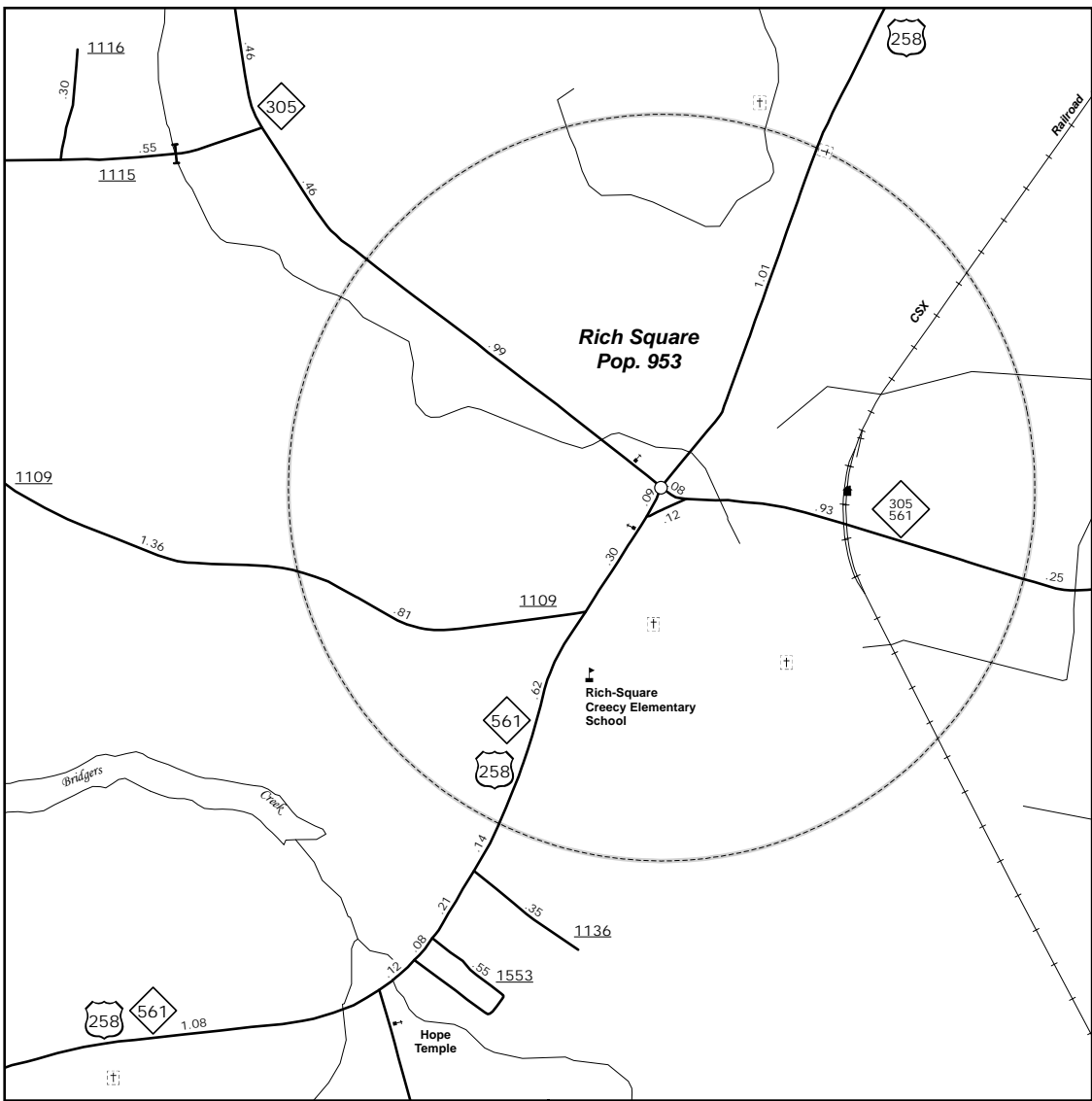
Gumberry



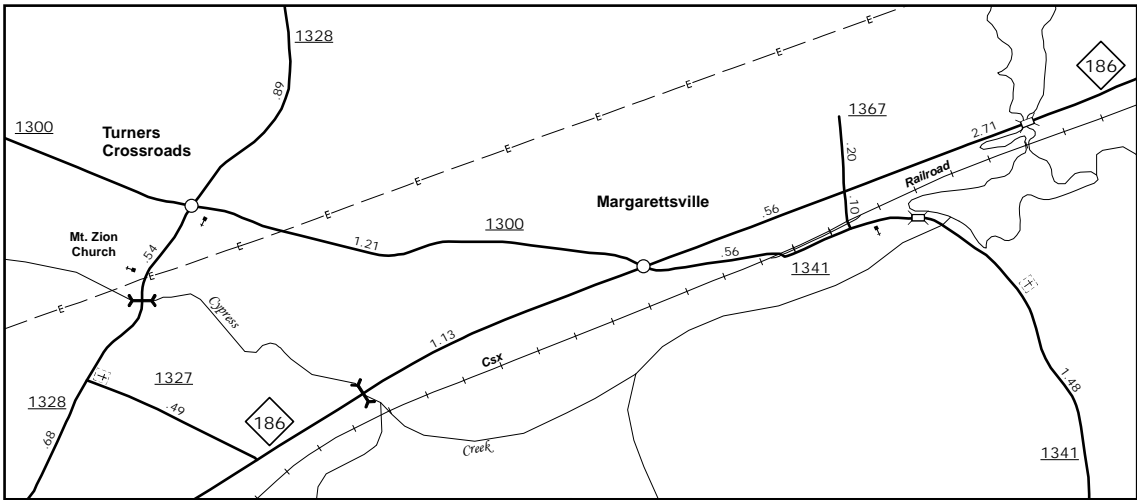
Jackson



Woodland



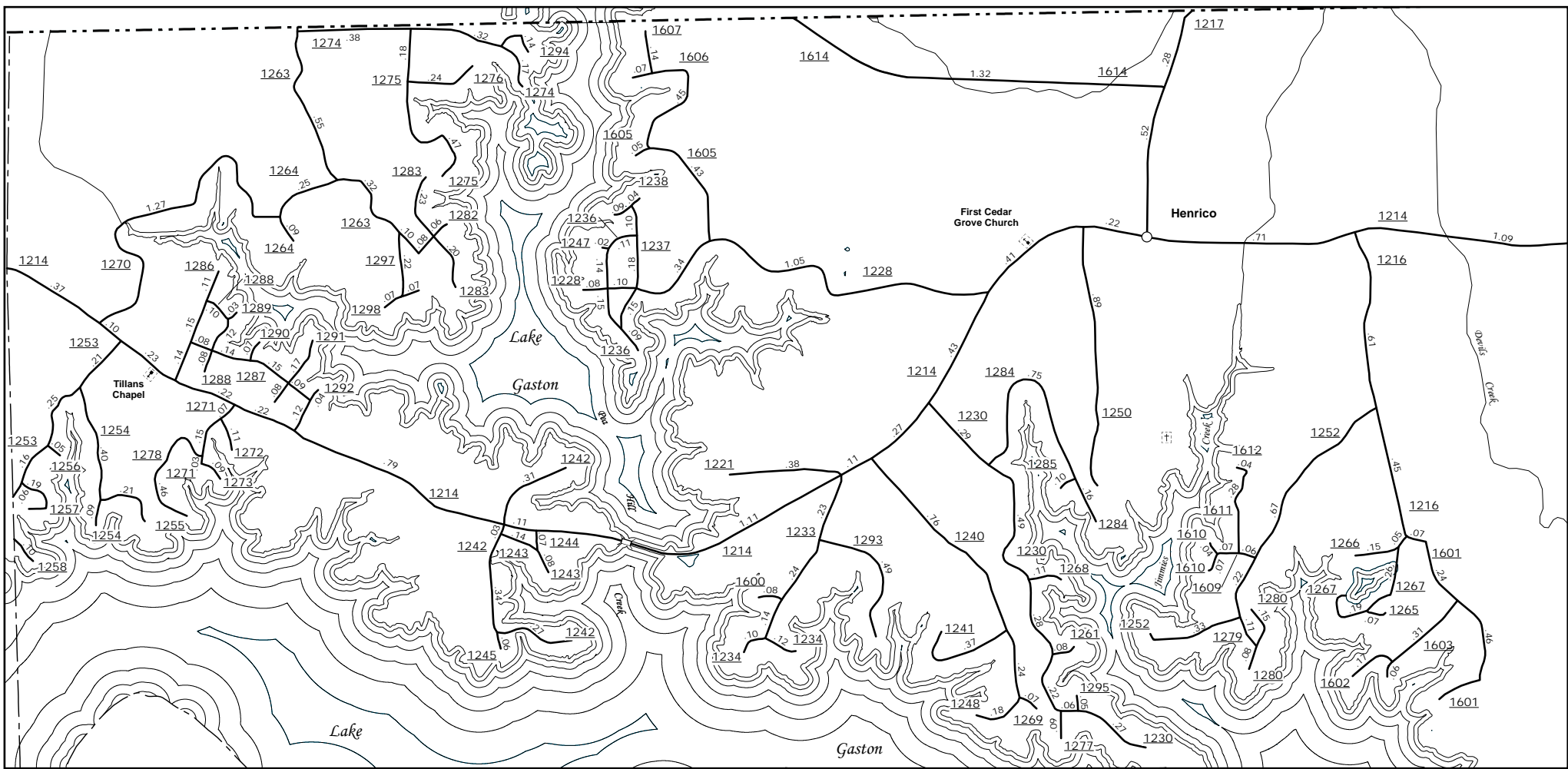
Rich Square



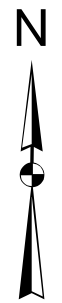
Margarettsville



Conway

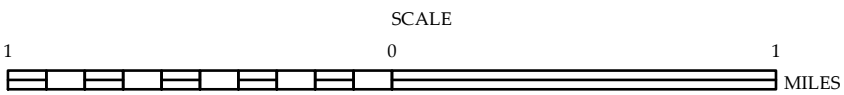


Henrico



ENLARGED MUNICIPAL AND SUBURBAN AREAS NORTHAMPTON COUNTY NORTH CAROLINA

PREPARED BY THE
NORTH CAROLINA DEPARTMENT OF TRANSPORTATION
MANAGEMENT SYSTEMS AND ASSESSMENTS UNIT - MAPPING SECTION
IN COOPERATION WITH THE
U.S. DEPARTMENT OF TRANSPORTATION
FEDERAL HIGHWAY ADMINISTRATION



10,000 FOOT GRID BASED ON NORTH CAROLINA PLANE COORDINATE SYSTEM
LAMBERT CONFORMAL CONIC PROJECTION