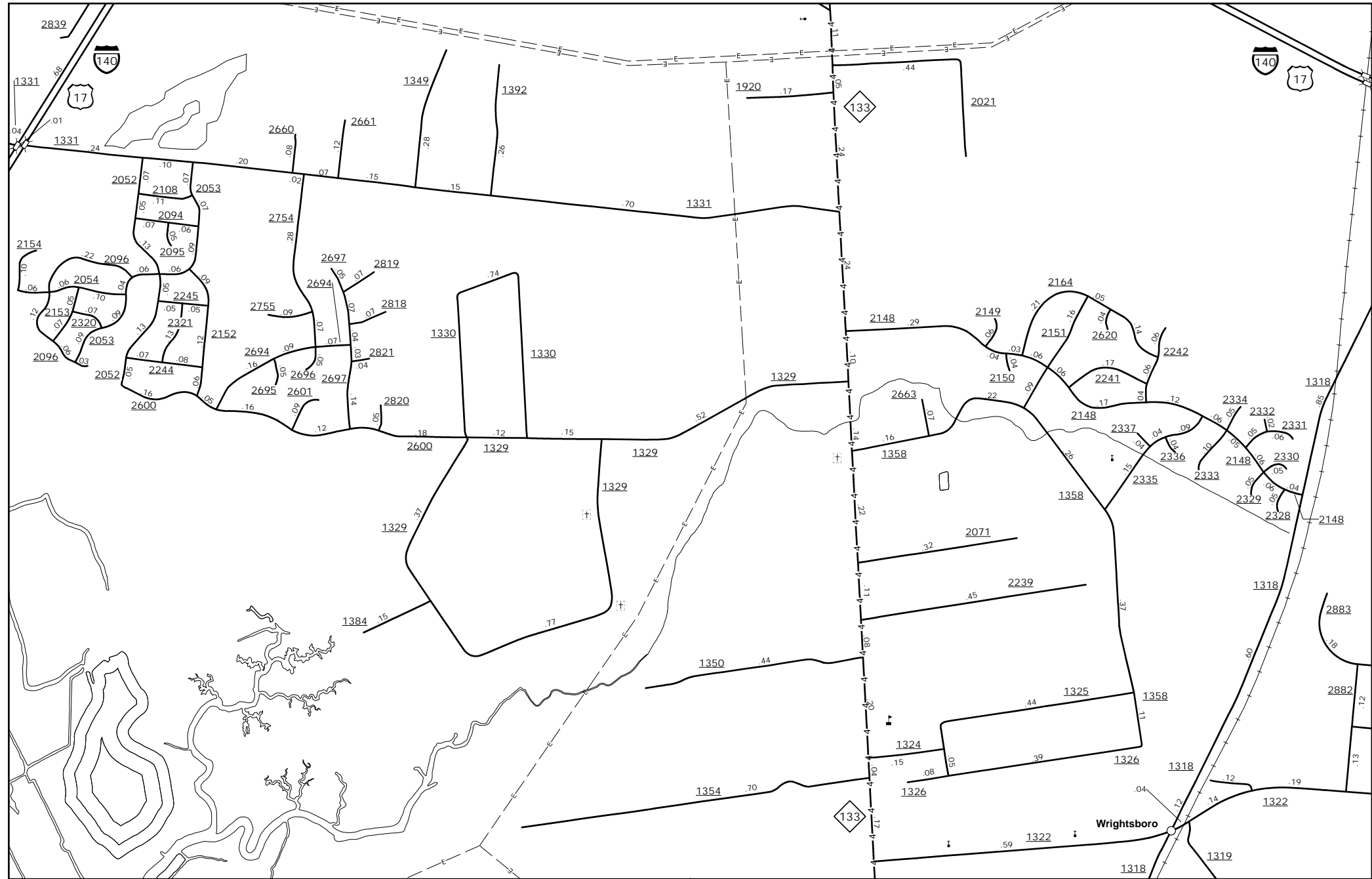
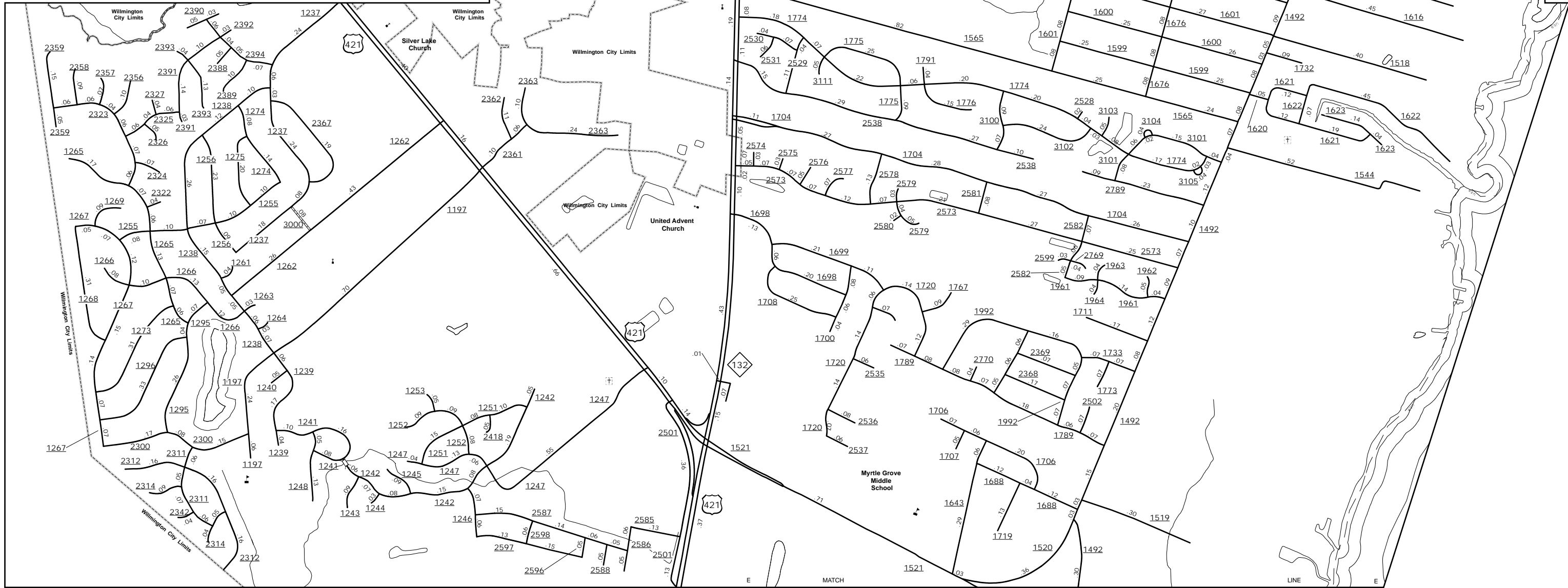


The MS&U's goal is to provide the most accurate and current information possible. Map data is compiled from numerous sources including aerial photography, ground surveys, and other data. As a result, roads and important non-system roads. The map was last updated on June 2014. For additional information, visit <http://www.ncdot.gov/transportation/MS&U>, and click on Data Providers or contact us at (819) 535-4460.

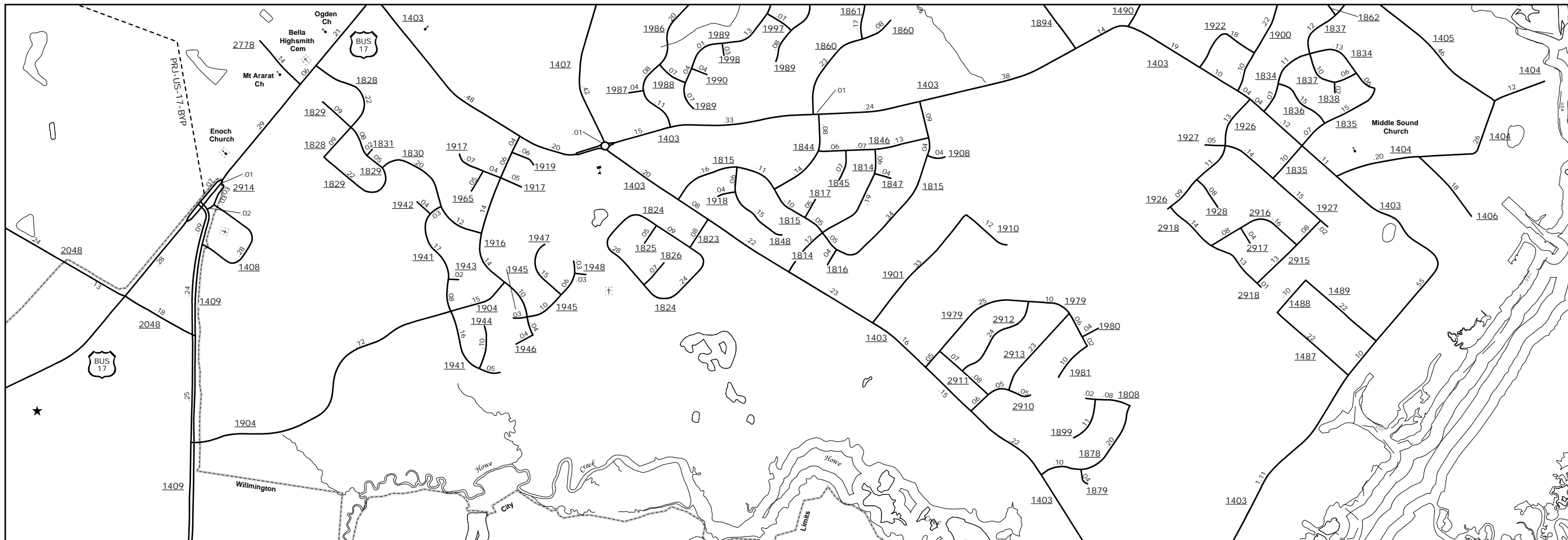
COPIES OF THIS MAP ARE AVAILABLE  
FROM THE N.C. DEPARTMENT OF TRANSPORTATION  
ADDRESS: N.C. DEPARTMENT OF TRANSPORTATION  
MS&U-MAPPING SECTION  
4809 BERNLIE RD.  
Raleigh, NC 27609



Wrightsboro



Myrtle Grove Vicinity

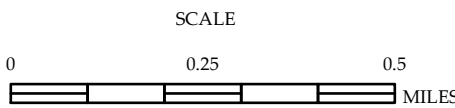


Ogden Elementary Area



ENLARGED MUNICIPAL AND SUBURBAN AREAS  
**NEW HANOVER COUNTY**  
**NORTH CAROLINA**

PREPARED BY THE  
NORTH CAROLINA DEPARTMENT OF TRANSPORTATION  
MANAGEMENT SYSTEMS AND ASSESSMENT UNIT - MAPPING SECTION  
IN COOPERATION WITH THE  
U.S. DEPARTMENT OF TRANSPORTATION  
FEDERAL HIGHWAY ADMINISTRATION



10,000 FOOT GRID BASED ON NORTH CAROLINA PLANE COORDINATE SYSTEM  
LAMBERT CONFORMAL CONIC PROJECTION