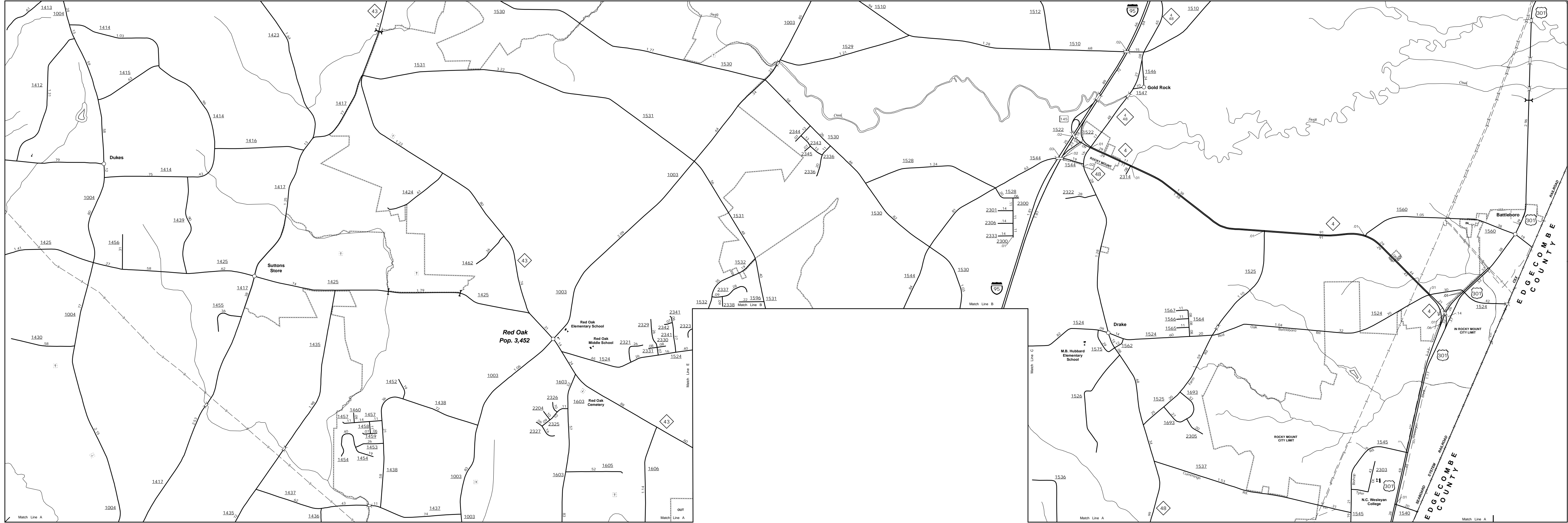


The MS&U's goal is to provide the most accurate and current information possible. Map data is compiled from numerous sources, including aerial photography, ground surveys, and other data. As a result, roads and other features may not always be shown in the exact location or with the exact dimensions as they appear in reality. The MS&U is not responsible for any errors or omissions in this map. For additional information, visit <http://www.ncdot.gov/Travel/MapData/MS&U> and click on Data Providers or contact us at (919) 835-5480.

COPIES OF THIS MAP ARE AVAILABLE
FOR PURCHASE AT A NOMINAL COST
ADDRESS:
N.C. DEPARTMENT OF TRANSPORTATION
MS&U - MAPPING SECTION
4801 BERT RD.
RALEIGH, NC 27605



Red Oak

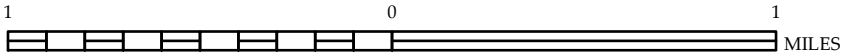


ENLARGED MUNICIPAL AND SUBURBAN AREAS

NASH COUNTY NORTH CAROLINA

PREPARED BY THE
NORTH CAROLINA DEPARTMENT OF TRANSPORTATION
MANAGEMENT SYSTEMS AND ASSESSMENTS UNIT - MAPPING SECTION
IN COOPERATION WITH THE
U.S. DEPARTMENT OF TRANSPORTATION
FEDERAL HIGHWAY ADMINISTRATION

SCALE



10,000 FOOT GRID BASED ON NORTH CAROLINA PLANE COORDINATE SYSTEM
LAMBERT CONFORMAL CONIC PROJECTION

SHEET 2 OF 4