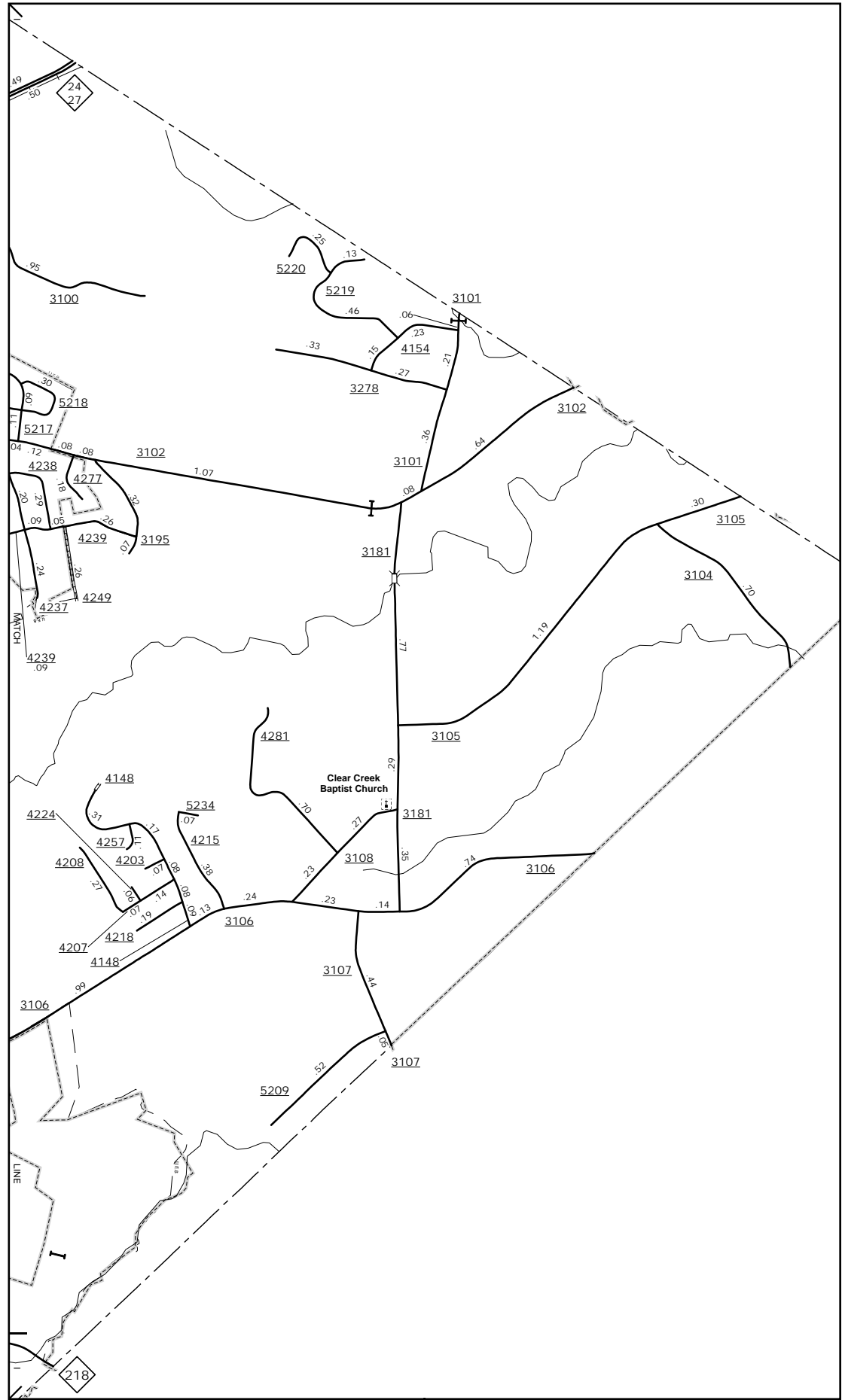
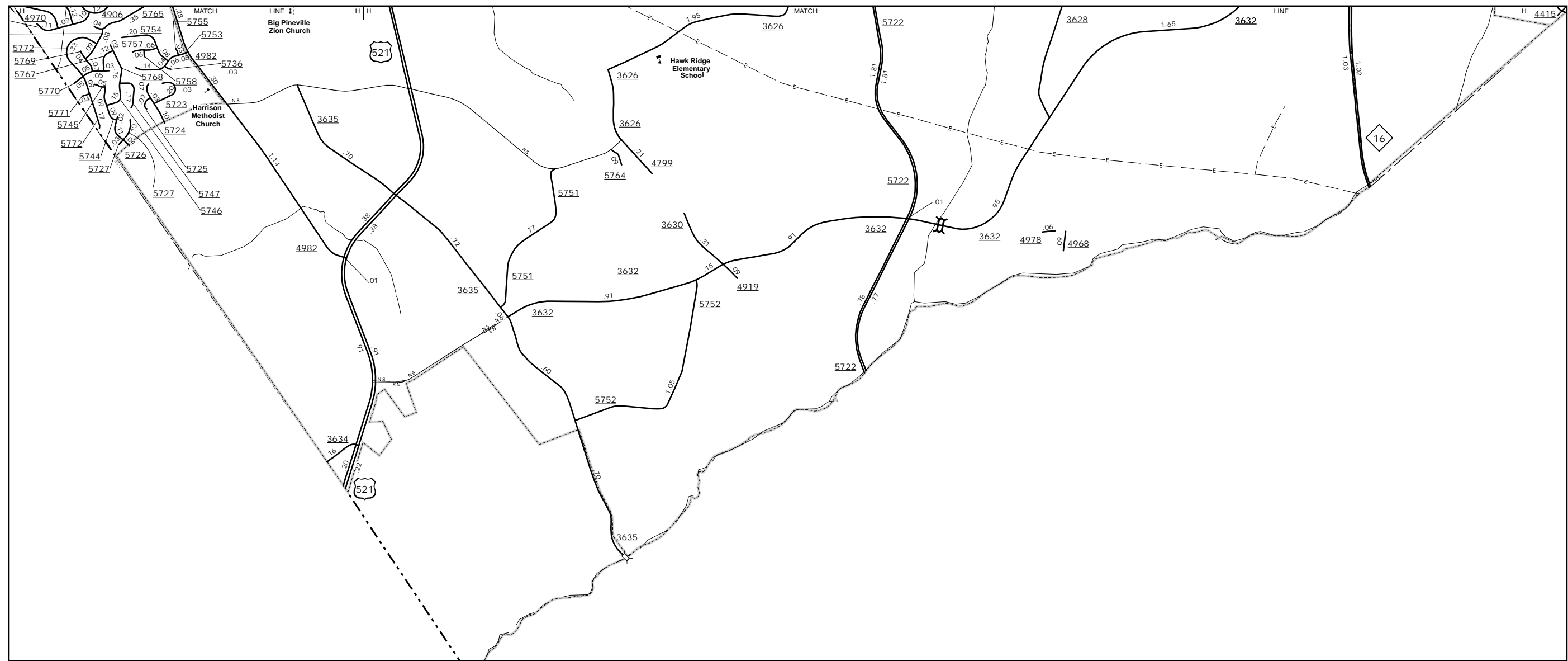
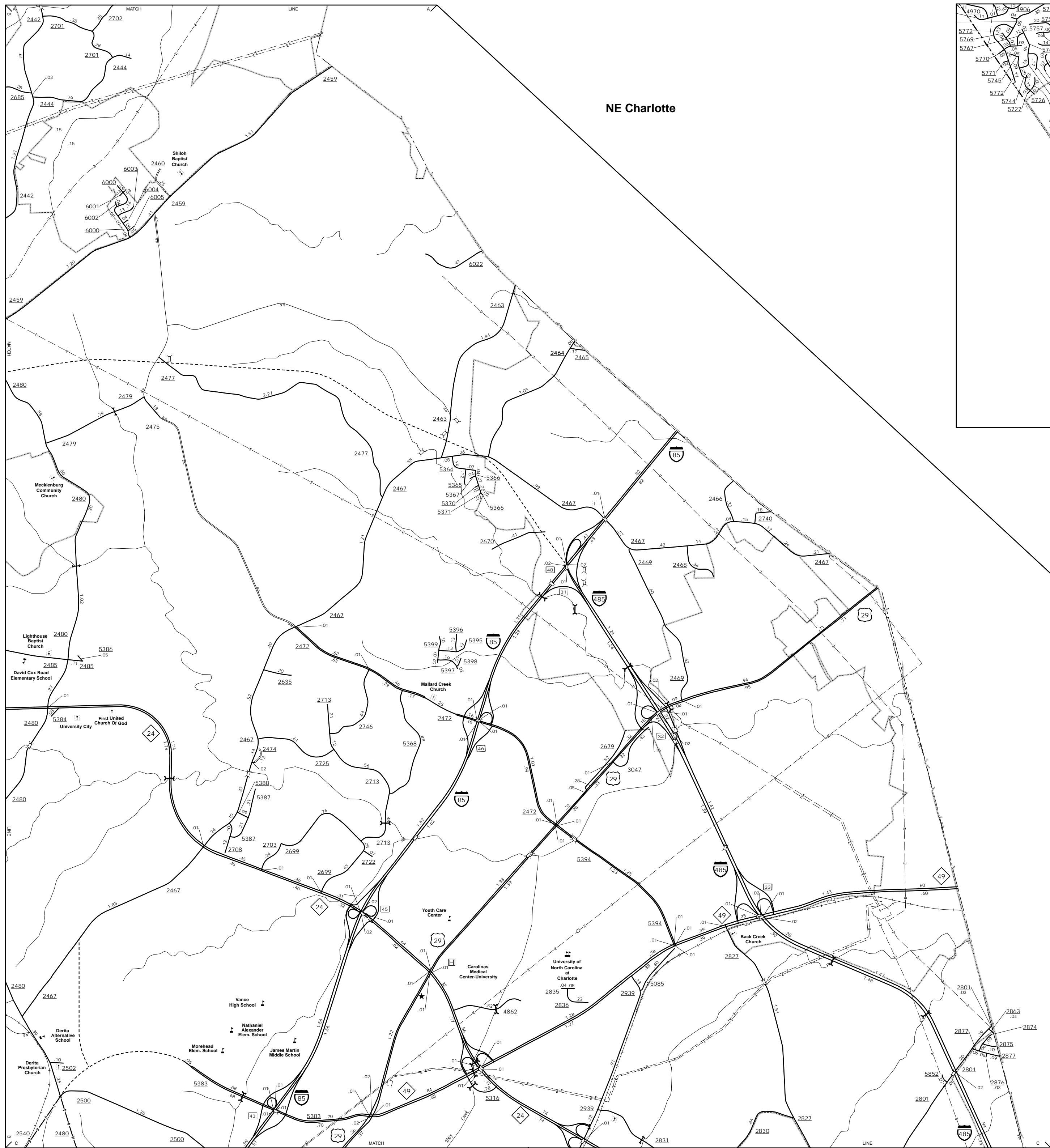


The MSALT's goal is to provide the most accurate and current information possible. Map data is compiled from numerous sources with varying degrees of accuracy. As a result, some features may not be shown or may be shown in an approximate location. The MSALT is not responsible for any errors or omissions. For additional information, visit <http://www.ncdot.gov/transportation/MSALT> and click on Data Providers or contact us at (810) 835-8480.

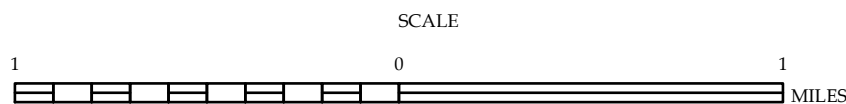
COPIES OF THIS MAP ARE AVAILABLE
FOR PUBLIC AT NOMINAL COST
ADDRESS: N.C. DEPARTMENT OF TRANSPORTATION
MSALT-MAPPING SECTION
4809 BERN LEO
Raleigh, NC 27609



East Mecklenburg

ENLARGED MUNICIPAL AND SUBURBAN AREAS MECKLENBURG COUNTY NORTH CAROLINA

PREPARED BY THE
NORTH CAROLINA DEPARTMENT OF TRANSPORTATION
MANAGEMENT SYSTEMS AND ASSESSMENTS UNIT - MAPPING SECTION
IN COOPERATION WITH THE
U.S. DEPARTMENT OF TRANSPORTATION
FEDERAL HIGHWAY ADMINISTRATION



10,000 FOOT GRID BASED ON NORTH CAROLINA PLANE COORDINATE SYSTEM
LAMBERT CONFORMAL CONIC PROJECTION