

The MS&U's goal is to provide the most accurate and current information possible. Map data is compiled from numerous sources, including aerial photography, ground surveys, and other data. As a result, roads and other features may not always be shown in the exact location or with the exact dimensions as they appear in reality. The MS&U is not responsible for any errors or omissions in this map. For additional information, visit <http://www.ncdot.gov/transportation/management-systems-and-assessments-unit-mapping-section> and click on Data Providers or contact us at (919) 835-3480.

COPIES OF THIS MAP ARE AVAILABLE  
FOR PURCHASE AT A PUBLIC COST.  
ADDRESS: N.C. DEPARTMENT OF TRANSPORTATION  
MS&U - MAPPING SECTION  
4800 BERRY LANE  
Raleigh, NC 27609



Stewart

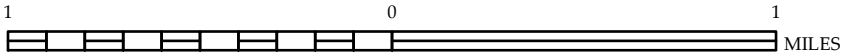


ENLARGED MUNICIPAL AND SUBURBAN AREAS

# JOHNSTON COUNTY NORTH CAROLINA

PREPARED BY THE  
NORTH CAROLINA DEPARTMENT OF TRANSPORTATION  
MANAGEMENT SYSTEMS AND ASSESSMENTS UNIT - MAPPING SECTION  
IN COOPERATION WITH THE  
U.S. DEPARTMENT OF TRANSPORTATION  
FEDERAL HIGHWAY ADMINISTRATION

SCALE



10,000 FOOT GRID BASED ON NORTH CAROLINA PLANE COORDINATE SYSTEM  
LAMBERT CONFORMAL CONIC PROJECTION

SHEET 11 OF 13