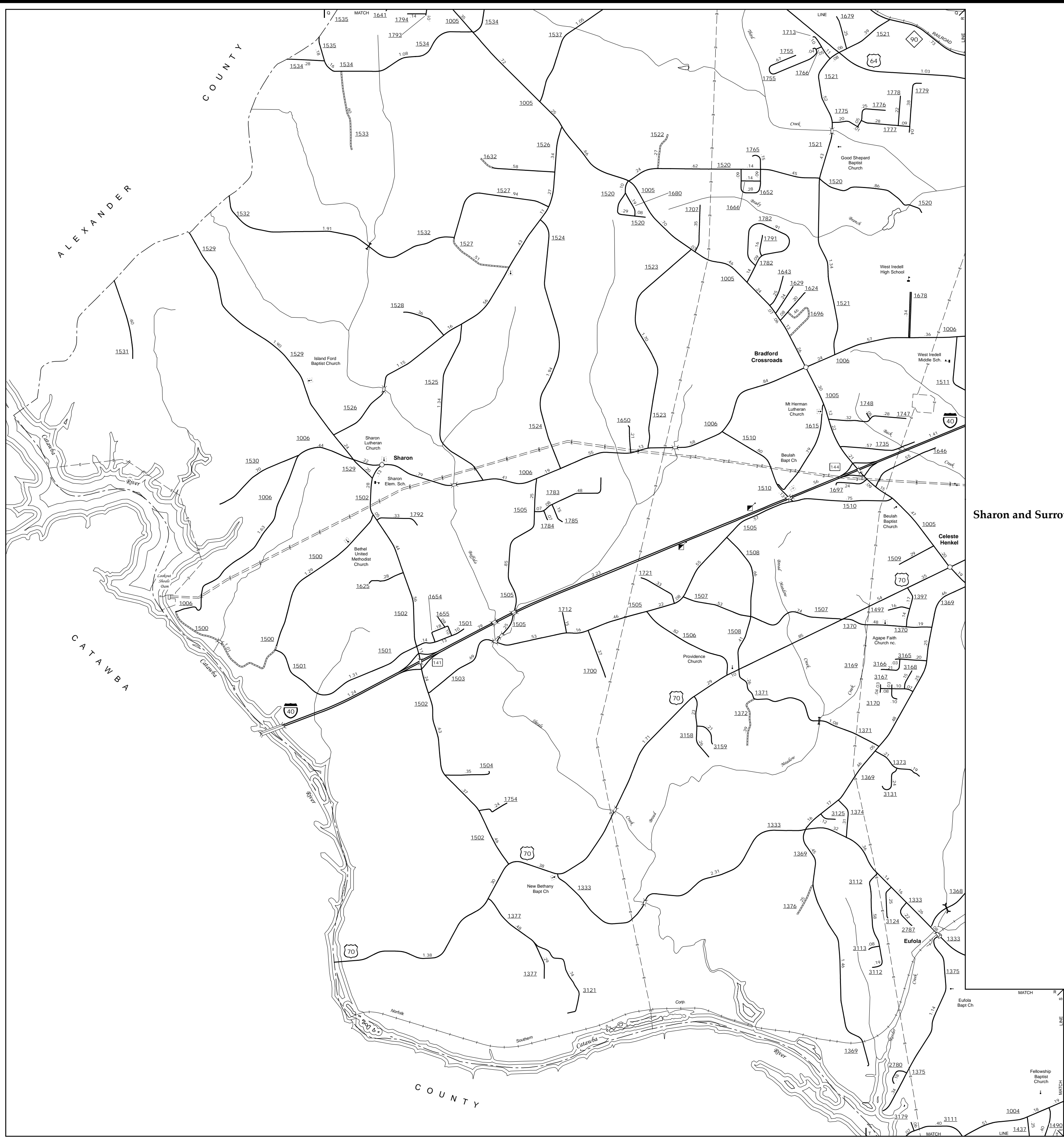
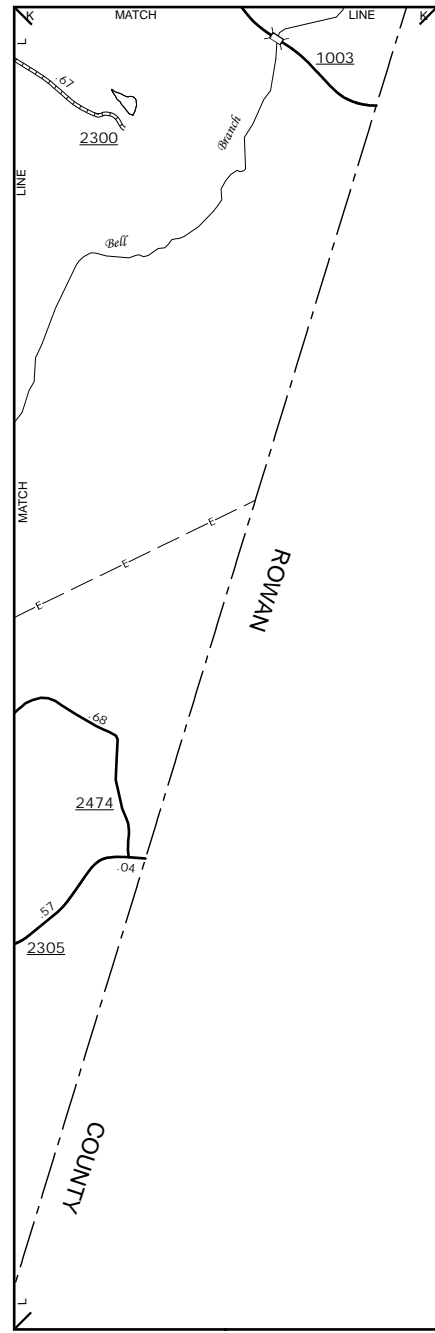


The MSALT's goal is to provide the most accurate and current information possible. Map data is compiled from numerous sources including aerial photography, ground surveys, and other data. As a result, roads and other features may not always be shown in the most current location. For additional information, visit <http://www.ncdot.gov/transportation/MSALT>, and click on Data Providers or contact us at (819) 535-5460.

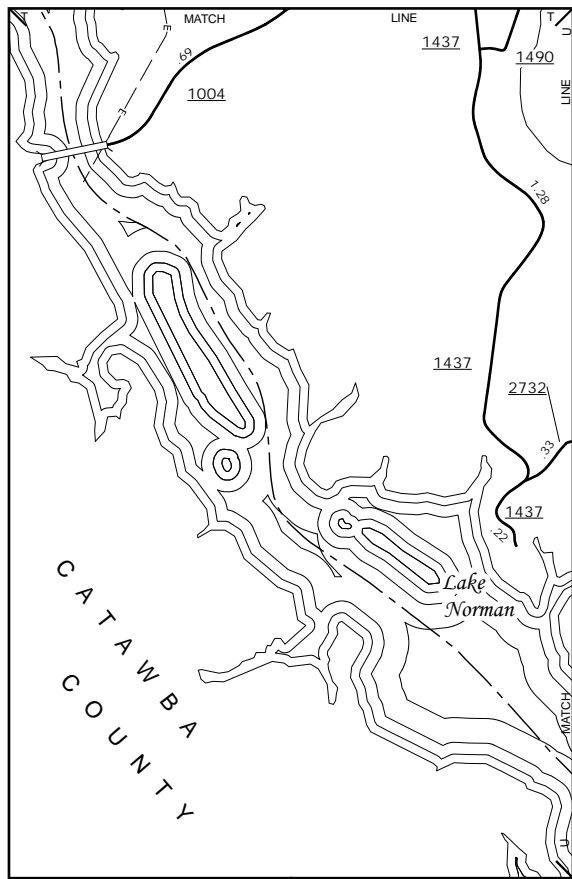
COPIES OF THIS MAP ARE AVAILABLE
FOR PURCHASE AT A SPECIAL
ADDRESS.
N.C. DEPARTMENT OF TRANSPORTATION
MSAU - MAPPING SECTION
4809 BERT RD.
Raleigh, NC 27605



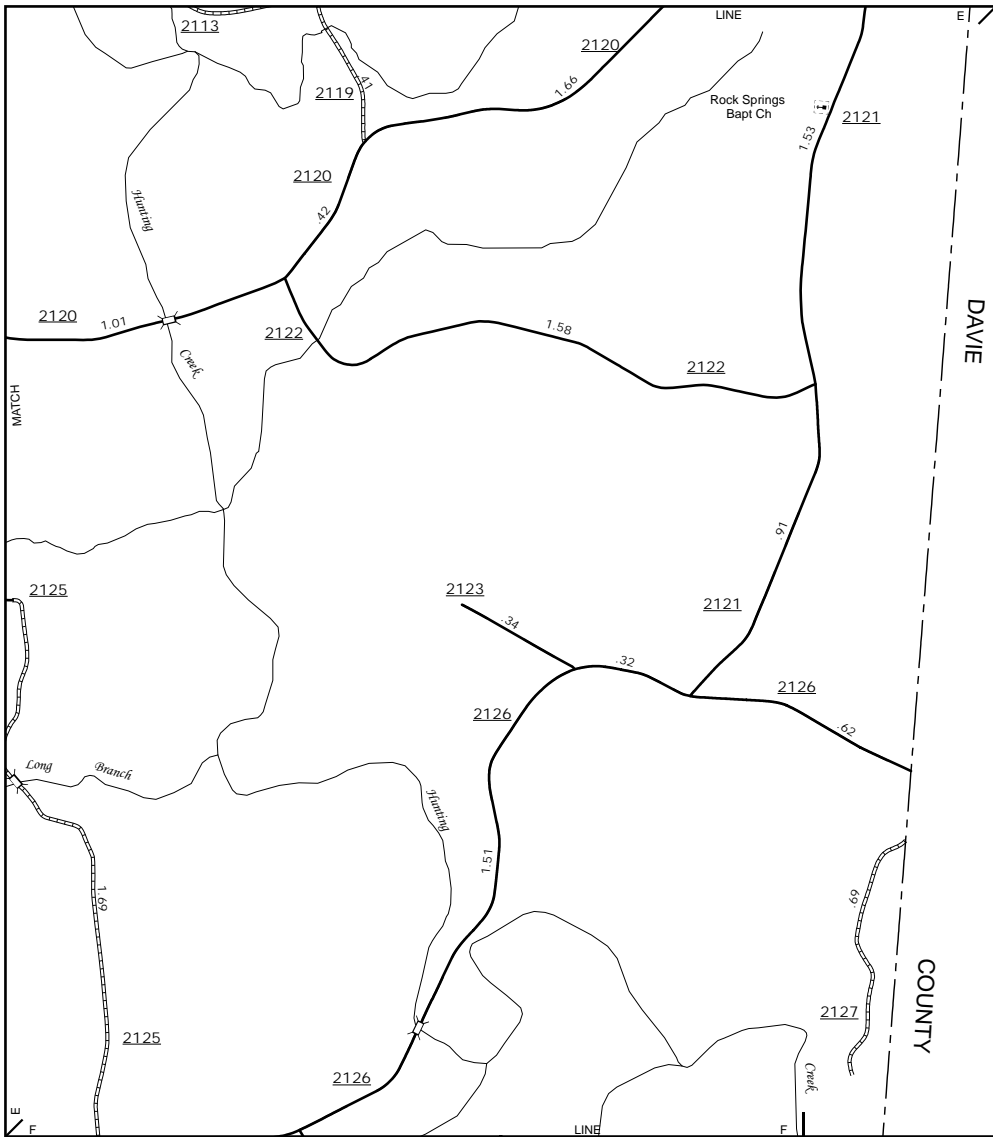
Sharon and Surrounding Area



Inset 2



Inset 3

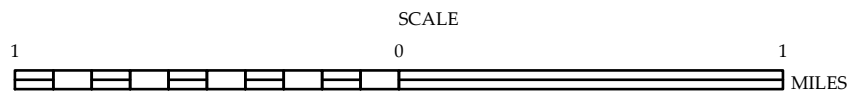


Rock Springs Bapt. Ch. Area



ENLARGED MUNICIPAL AND SUBURBAN AREAS
IREDELL COUNTY
NORTH CAROLINA

PREPARED BY THE
NORTH CAROLINA DEPARTMENT OF TRANSPORTATION
MANAGEMENT SYSTEMS AND ASSESSMENT UNIT - MAPPING SECTION
IN COOPERATION WITH THE
U.S. DEPARTMENT OF TRANSPORTATION
FEDERAL HIGHWAY ADMINISTRATION



10,000 FOOT GRID BASED ON NORTH CAROLINA PLANE COORDINATE SYSTEM
LAMBERT CONFORMAL CONIC PROJECTION