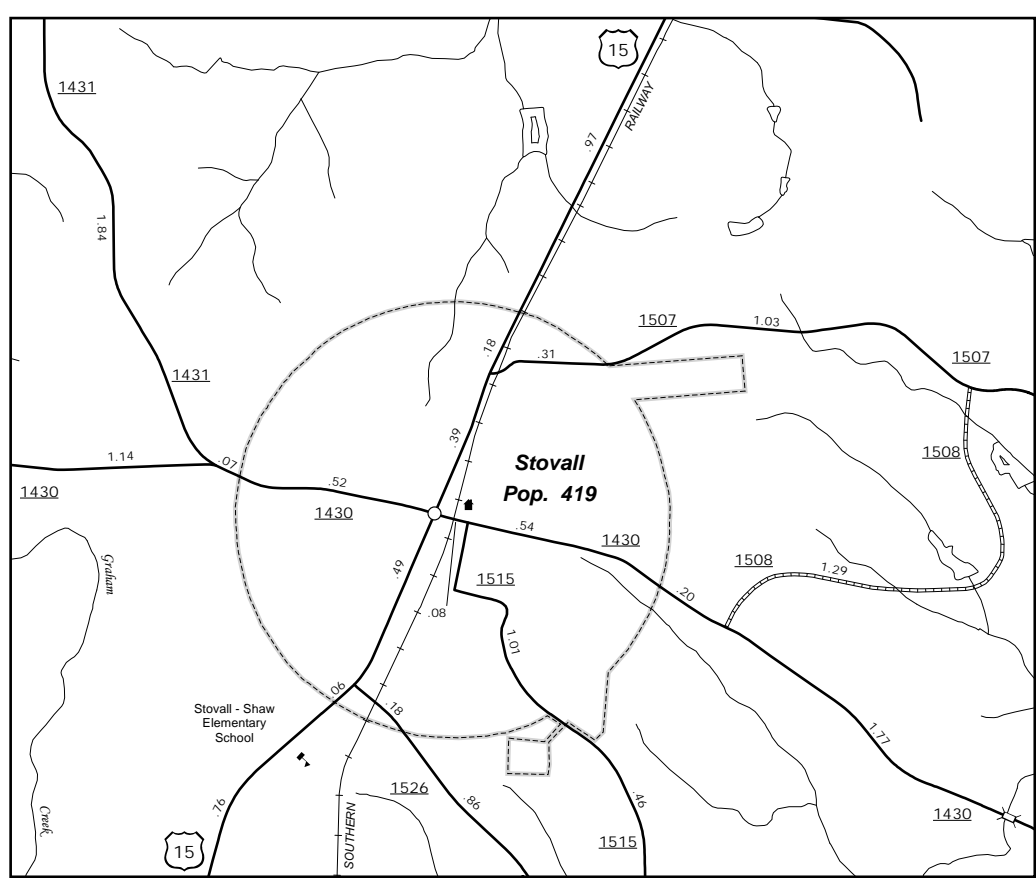


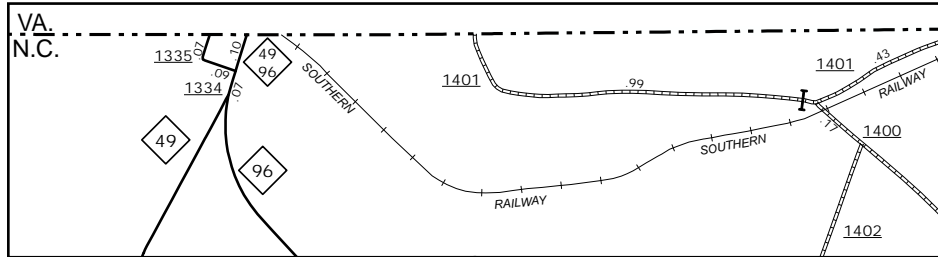
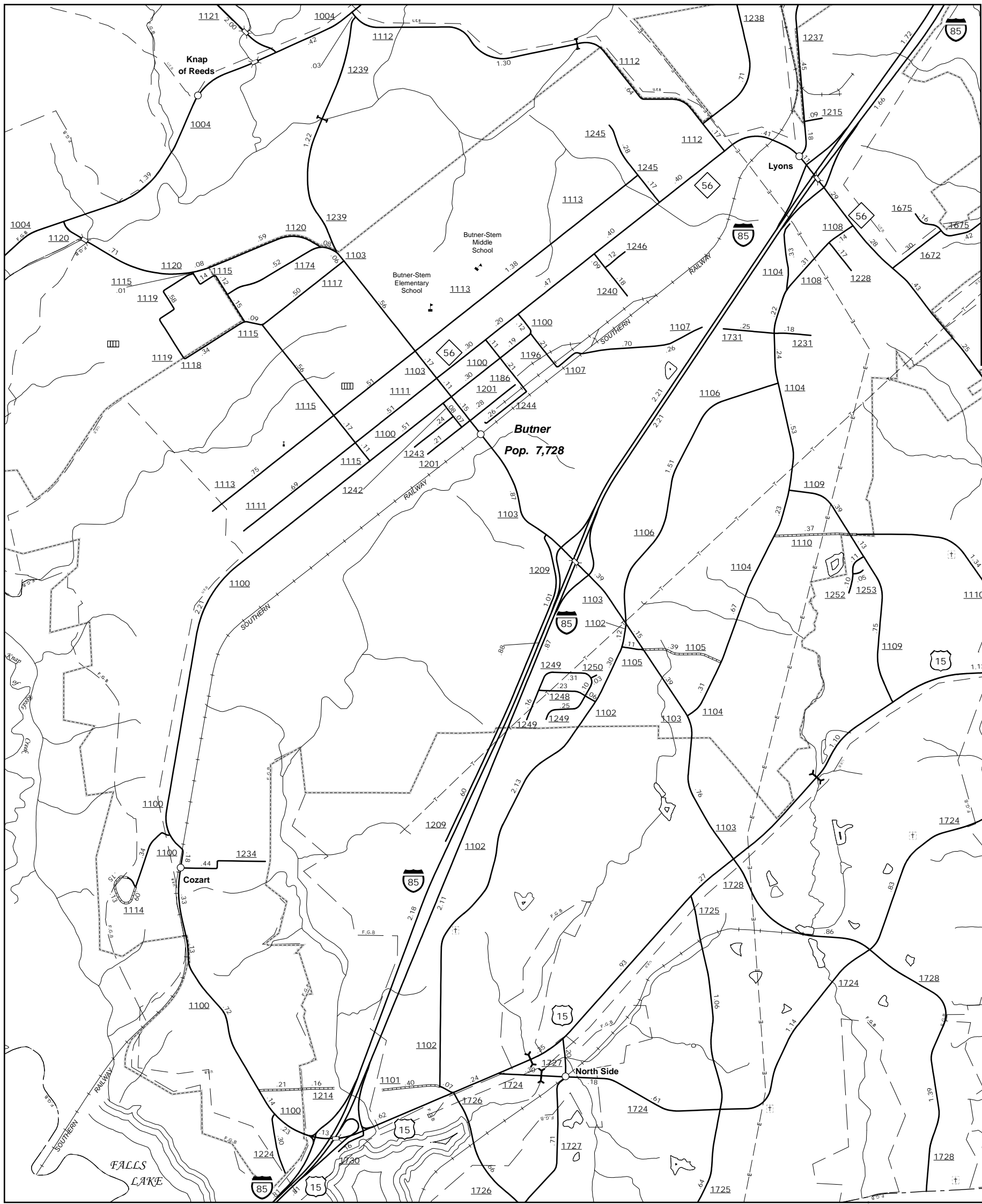
The MS&U's goal is to provide the most accurate and current information possible. Map data is compiled from numerous sources, varying in accuracy and timeliness. Map data is not guaranteed. As a result, roads shown on this map may not reflect actual conditions. Map data is not intended to be used for navigation and important non-system roads.

<http://www.ncdot.gov/trafficmanagement> and click on Data Providers or contact us at (819) 835-9482.

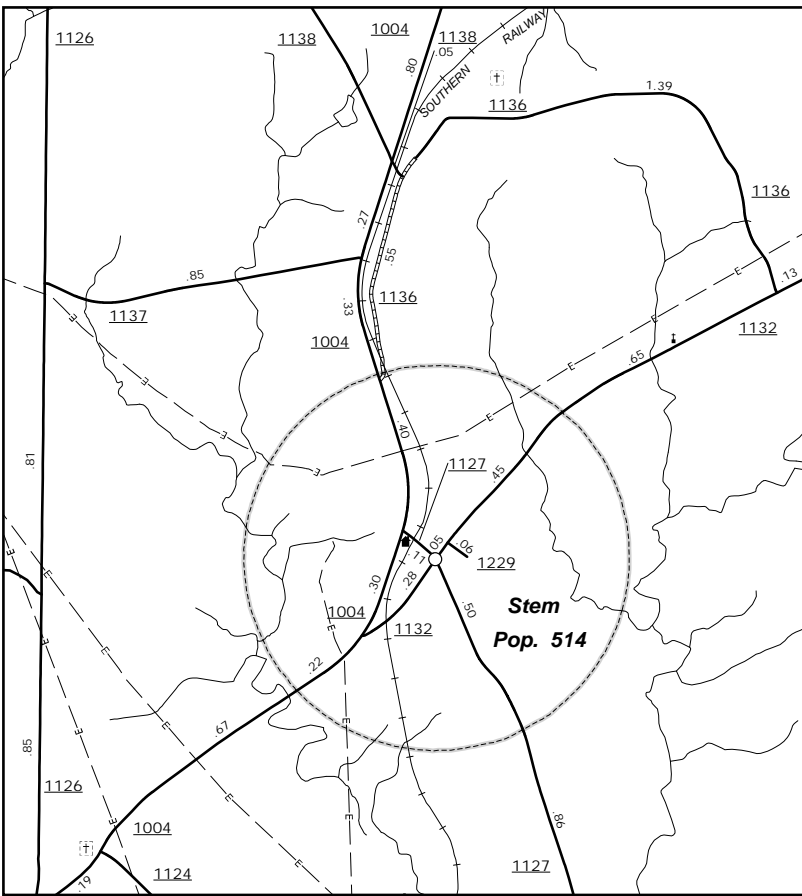
COPIES OF THIS MAP ARE AVAILABLE
FOR PUBLIC AT NOMINAL COST
ADDRESS:
N.C. DEPARTMENT OF TRANSPORTATION
MS&U - MAPPING SECTION
489 BERN LID
COLUMBIA, NC 28038



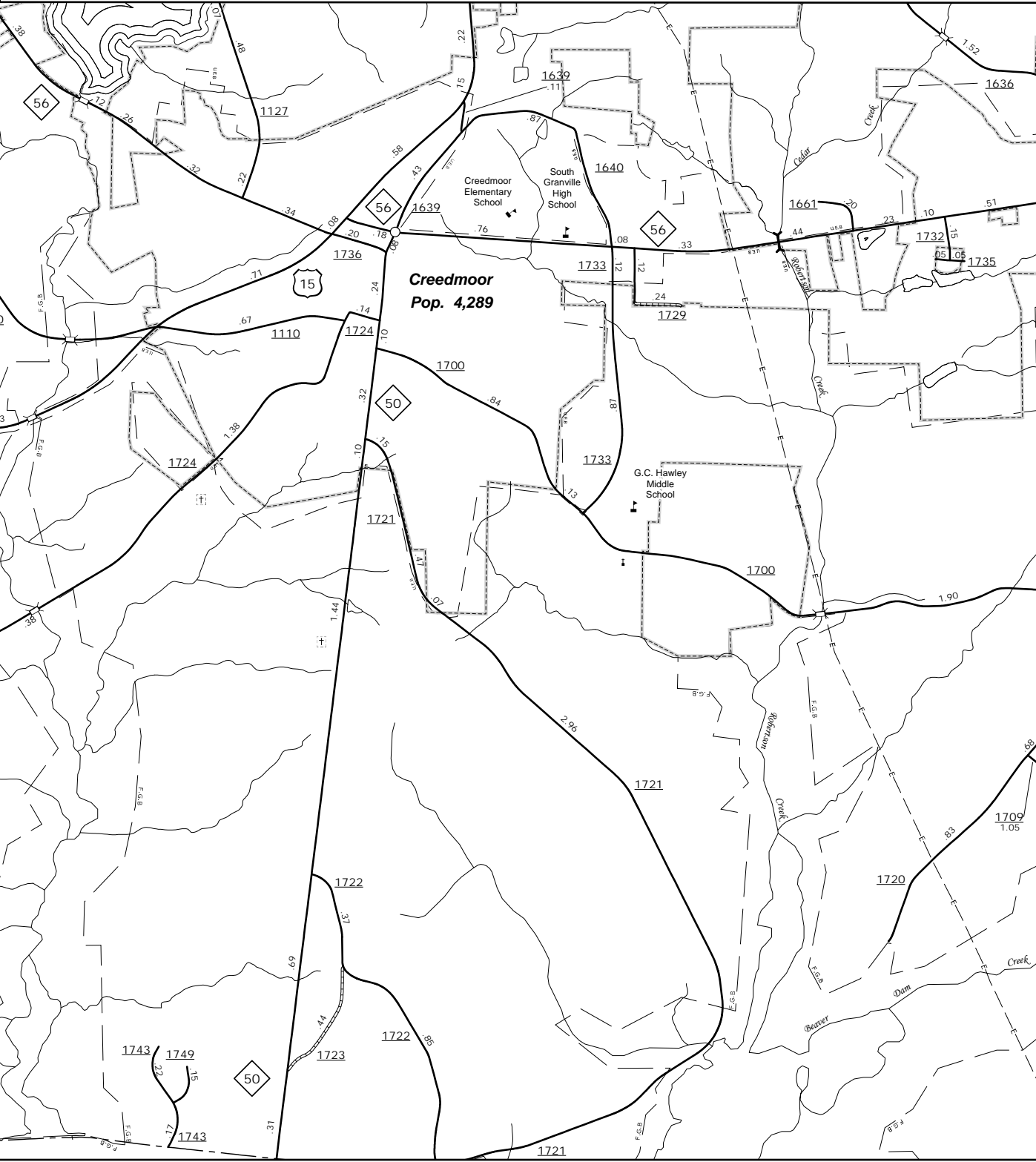
Stovall



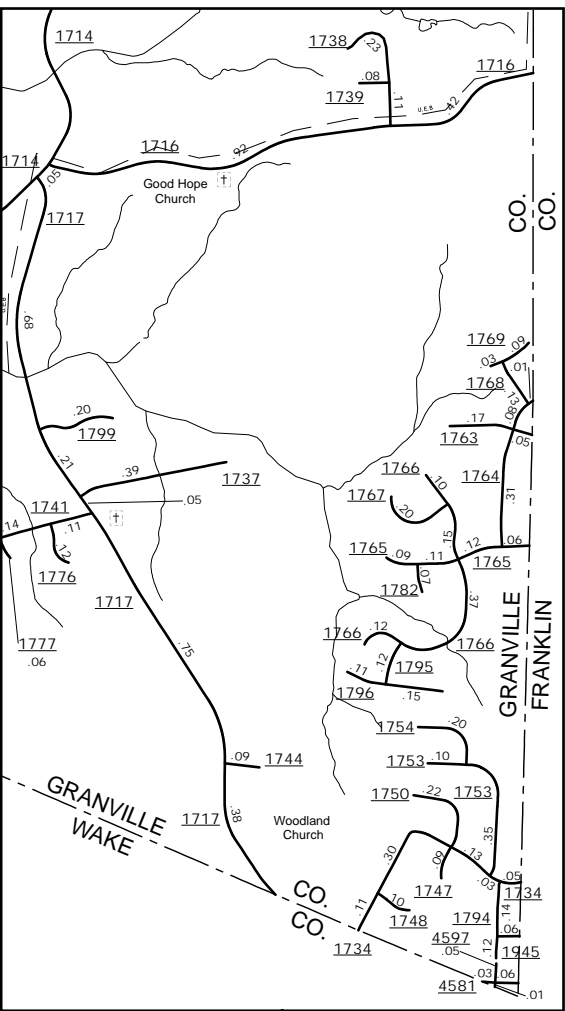
Virginia



Stem



Oxford



SE Corner

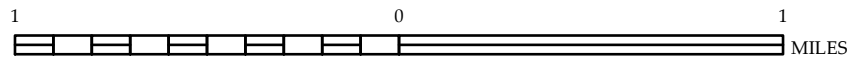
Butner & Creedmoor



ENLARGED MUNICIPAL AND SUBURBAN AREAS GRANVILLE COUNTY NORTH CAROLINA

PREPARED BY THE
NORTH CAROLINA DEPARTMENT OF TRANSPORTATION
MANAGEMENT SYSTEMS AND ASSESSMENTS UNIT - MAPPING SECTION
IN COOPERATION WITH THE
U.S. DEPARTMENT OF TRANSPORTATION
FEDERAL HIGHWAY ADMINISTRATION

SCALE



10,000 FOOT GRID BASED ON NORTH CAROLINA PLANE COORDINATE SYSTEM
LAMBERT CONFORMAL CONIC PROJECTION