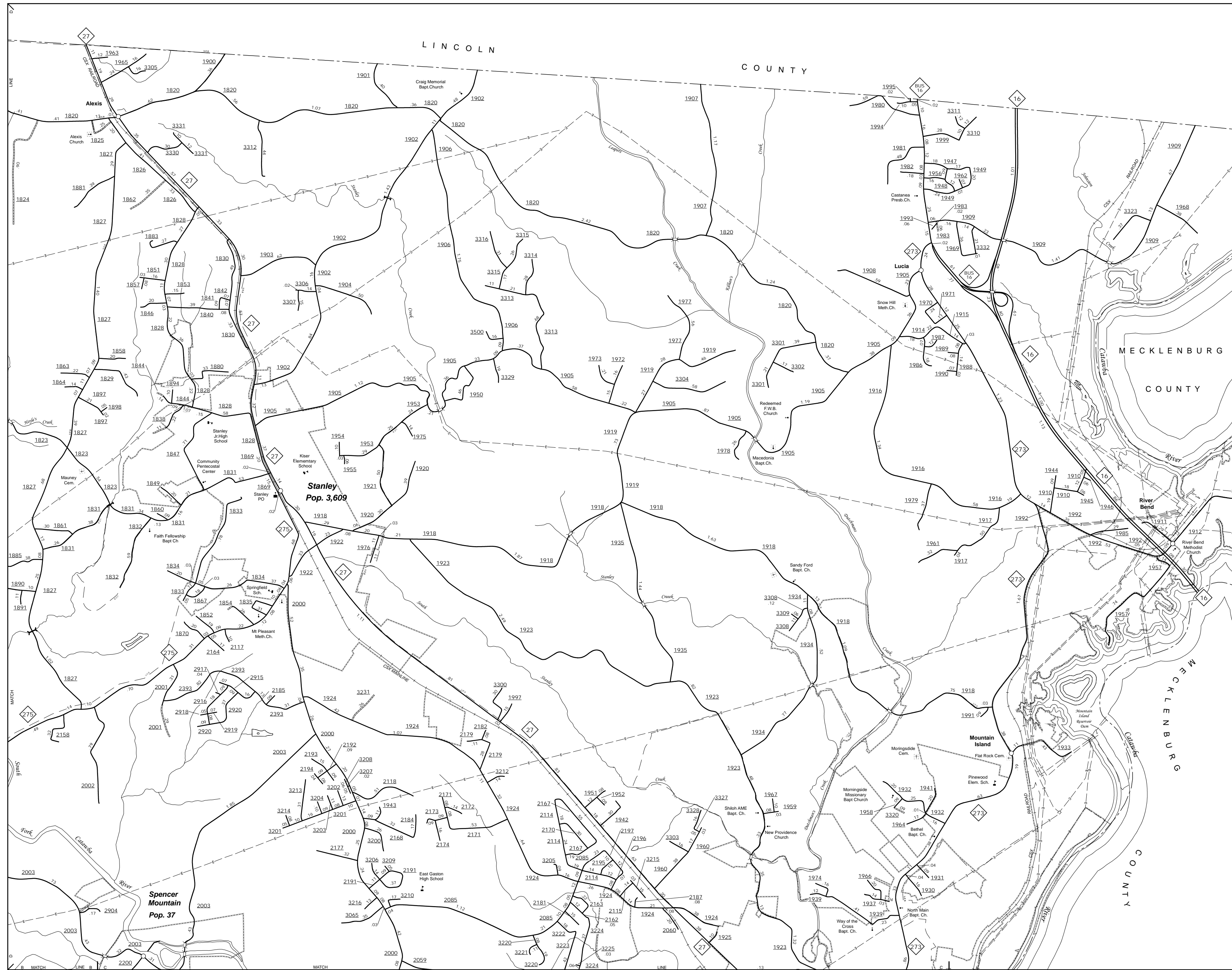
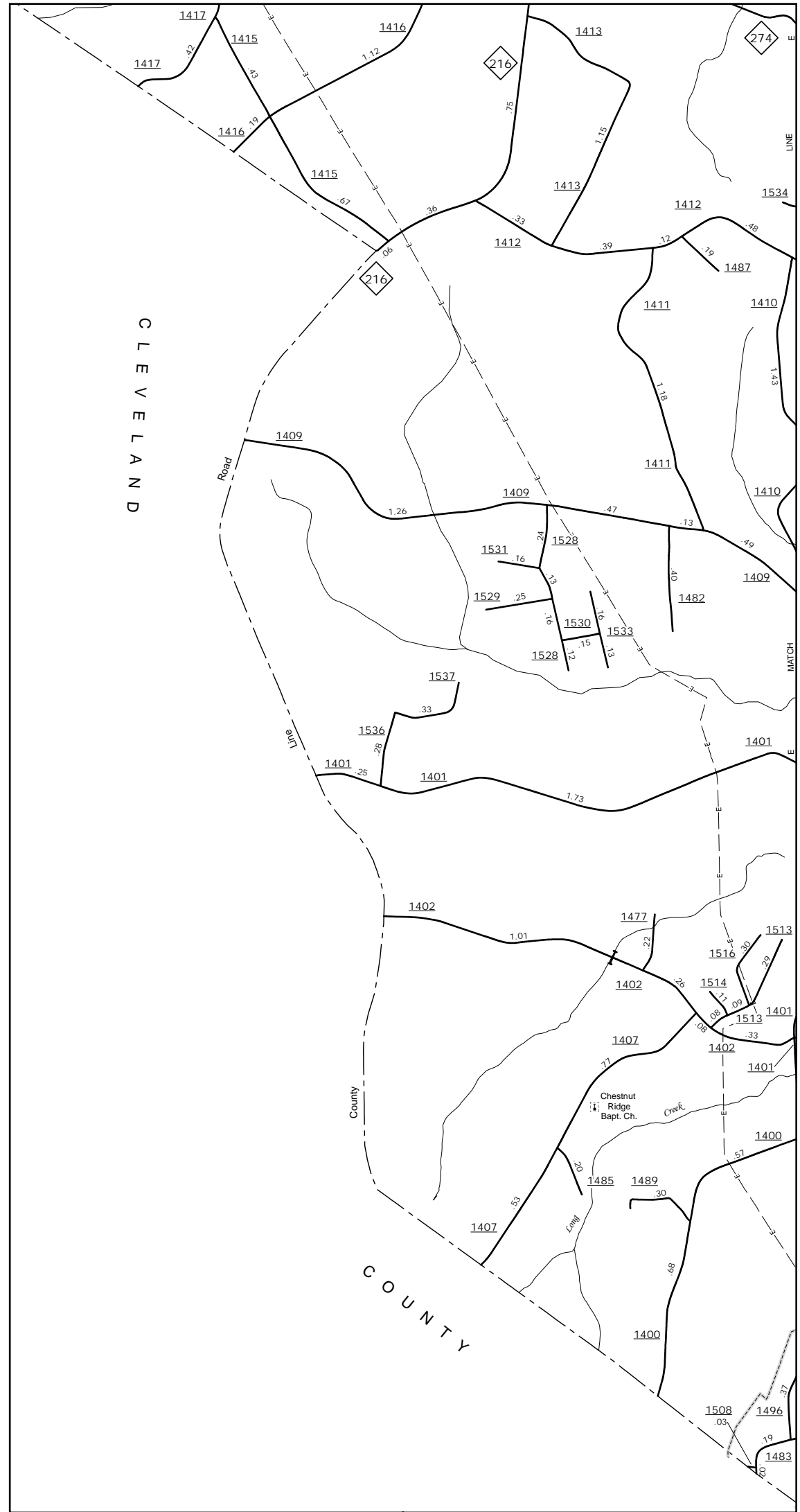


The MS&U's goal is to provide the most accurate and current information possible. Map data is compiled from numerous sources with varying degrees of accuracy and timeliness. As a result, roads and other features may not always be shown in the most current or accurate manner. The MS&U does not warrant the accuracy or completeness of the data provided on this map. For additional information, visit <http://www.ncdot.gov/transportation/MSAU> and click on Data Providers or contact us at (810) 835-8480.

COPIES OF THIS MAP ARE AVAILABLE  
FROM THE PUBLIC AT NOMINAL COST.  
ADDRESS: N.C. DEPARTMENT OF TRANSPORTATION  
MS&U-MAPPING SECTION  
4809 BERN LEO  
COLUMBIA, NC 28038

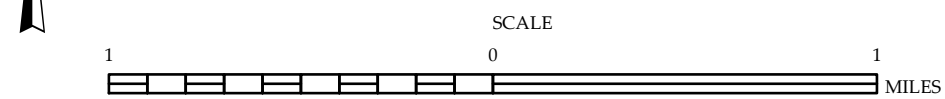


Stanley and Vicinity



Chestnut Ridge and Vicinity

ENLARGED MUNICIPAL AND SUBURBAN AREAS  
**GASTON COUNTY**  
NORTH CAROLINA  
PREPARED BY THE  
NORTH CAROLINA DEPARTMENT OF TRANSPORTATION  
MANAGEMENT SYSTEMS AND ASSESSMENT UNIT - MAPPING SECTION  
IN COOPERATION WITH THE  
U.S. DEPARTMENT OF TRANSPORTATION  
FEDERAL HIGHWAY ADMINISTRATION



10,000 FOOT GRID BASED ON NORTH CAROLINA PLANE COORDINATE SYSTEM  
LAMBERT CONFORMAL CONIC PROJECTION