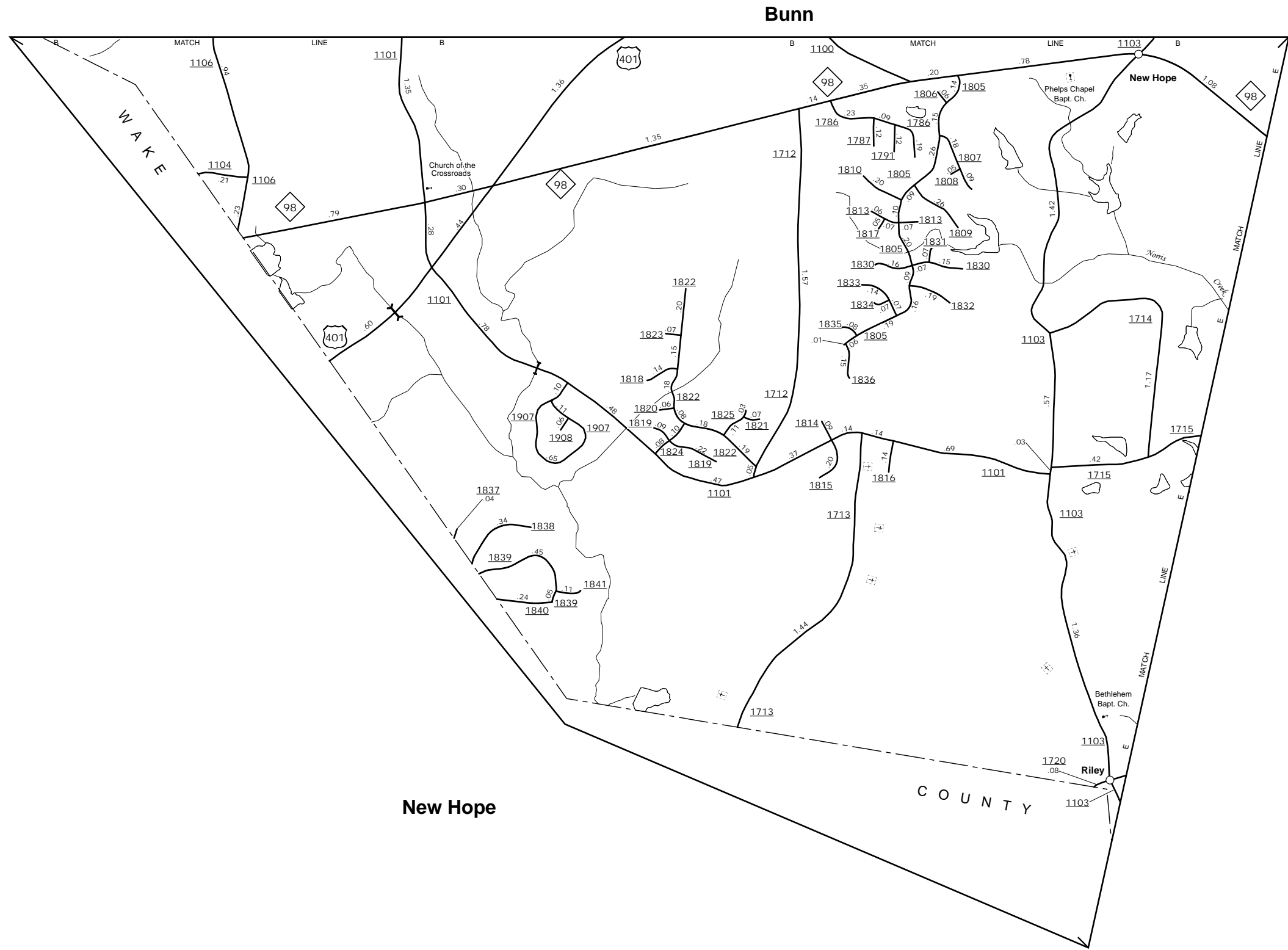


The MS&U's goal is to provide the most accurate and current information possible. Map data is compiled from numerous sources including aerial photography, ground surveys, and other data. As a result, roads and other features may not always be shown in the exact location or with the exact dimensions and important non-system roads. Map data was last updated on June 1, 2014. For additional information, visit <http://www.ncdot.gov/transportation/transportation> and click on Data Providers or contact us at (819) 835-5482.

COPIES OF THIS MAP ARE AVAILABLE
FOR PURCHASE AT A NOMINAL COST
ADDRESS:
N.C. DEPARTMENT OF TRANSPORTATION
MS&U - MAPPING SECTION
4809 BERT RD.
Raleigh, NC 27609

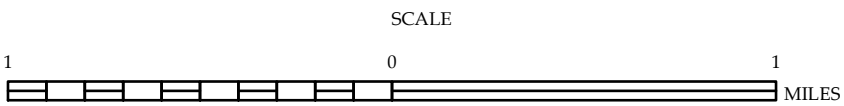


Franklinton

ENLARGED MUNICIPAL AND SUBURBAN AREAS

FRANKLIN COUNTY NORTH CAROLINA

PREPARED BY THE
NORTH CAROLINA DEPARTMENT OF TRANSPORTATION
MANAGEMENT SYSTEMS AND ASSESSMENTS UNIT - MAPPING SECTION
IN COOPERATION WITH THE
U.S. DEPARTMENT OF TRANSPORTATION
FEDERAL HIGHWAY ADMINISTRATION



10,000 FOOT GRID BASED ON NORTH CAROLINA PLANE COORDINATE SYSTEM
LAMBERT CONFORMAL CONIC PROJECTION

SHEET 4 OF 4