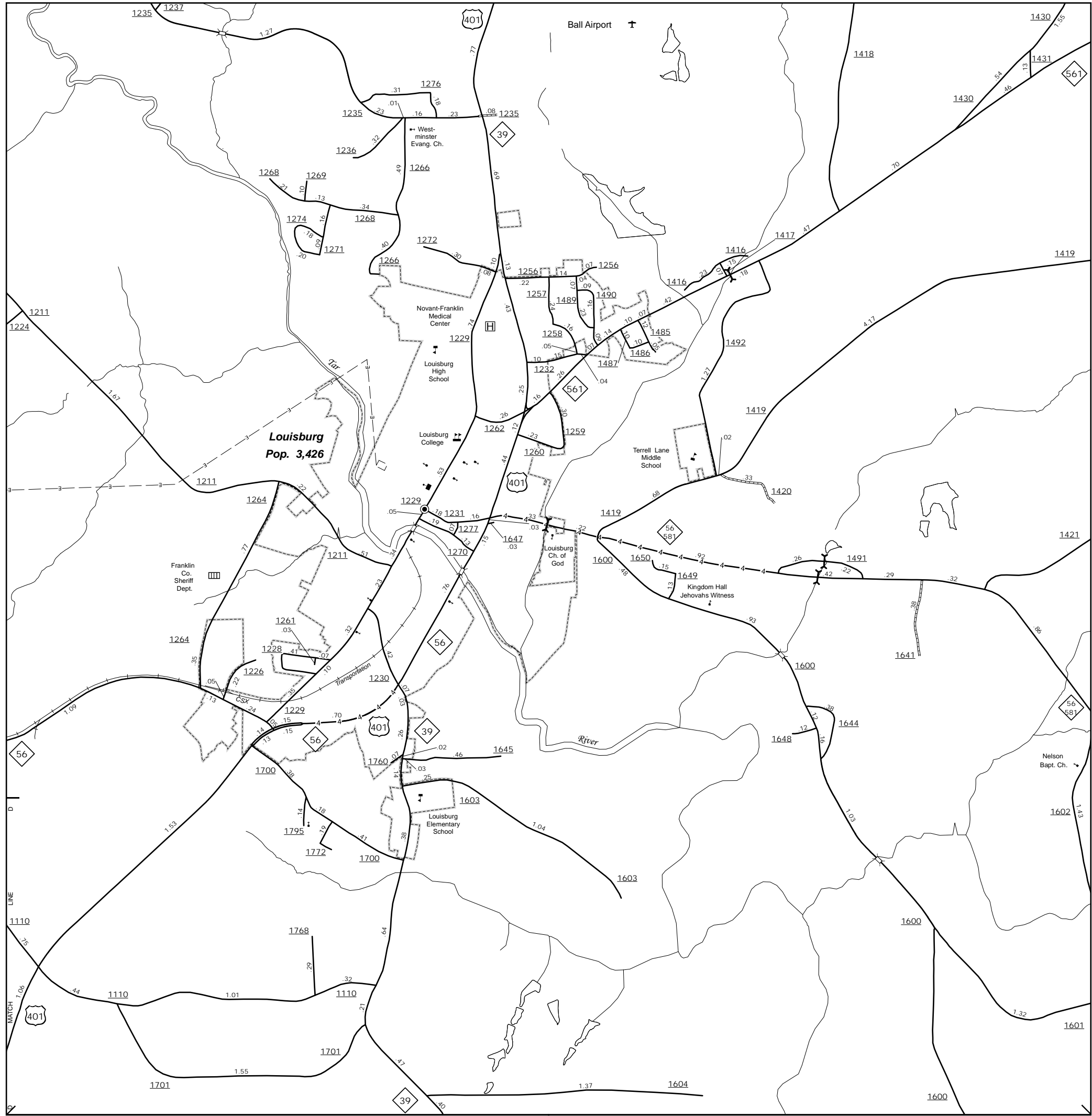
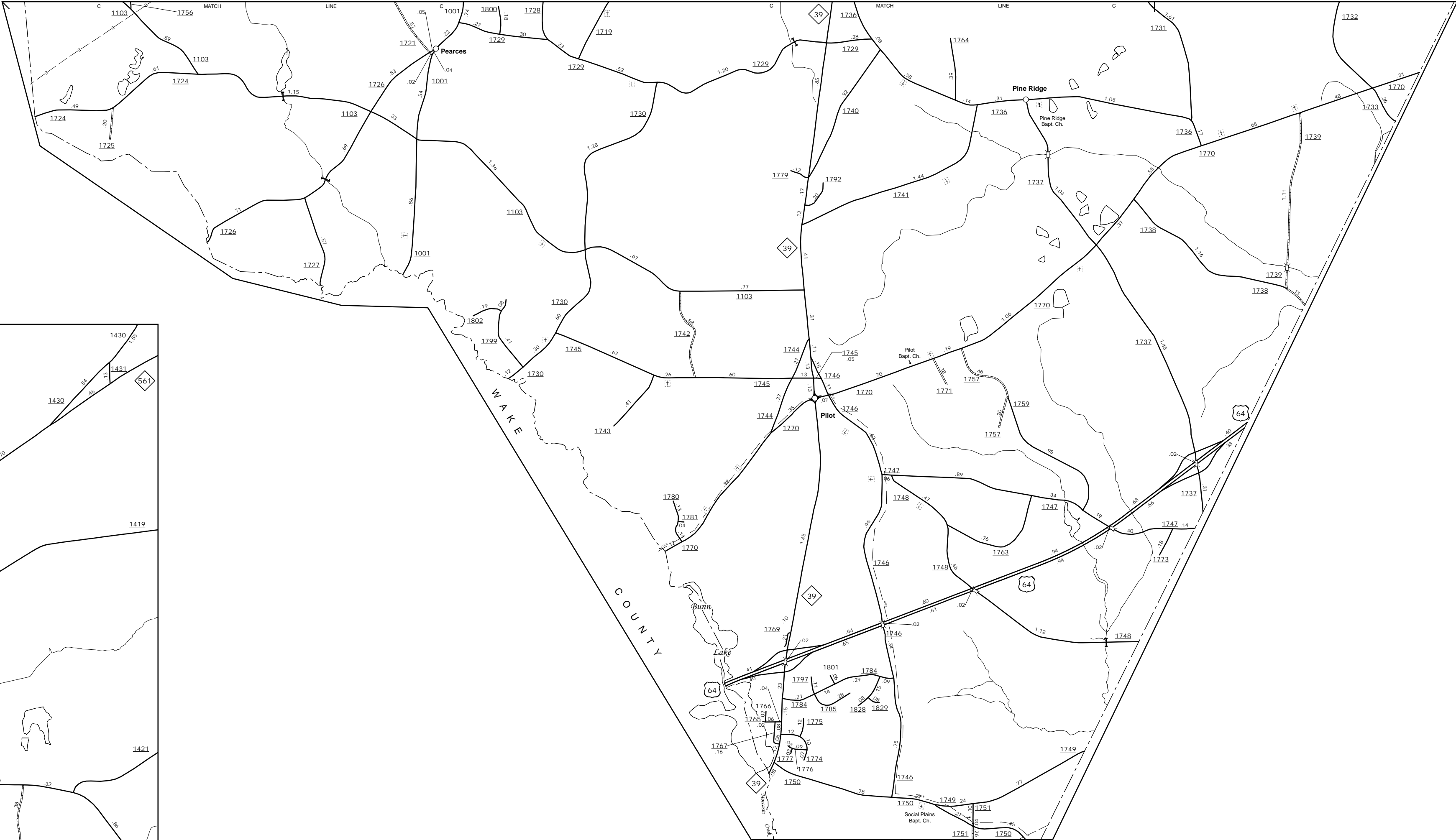


The MS&U's goal is to provide the most accurate and current information possible. Map data is compiled from numerous sources including aerial photography, ground surveys, and other data. As a result, there may be some minor discrepancies between the map and actual conditions. For additional information, visit <http://www.ncdot.gov/transportation/MS&U> and click on Data Providers or contact us at (919) 885-9480.

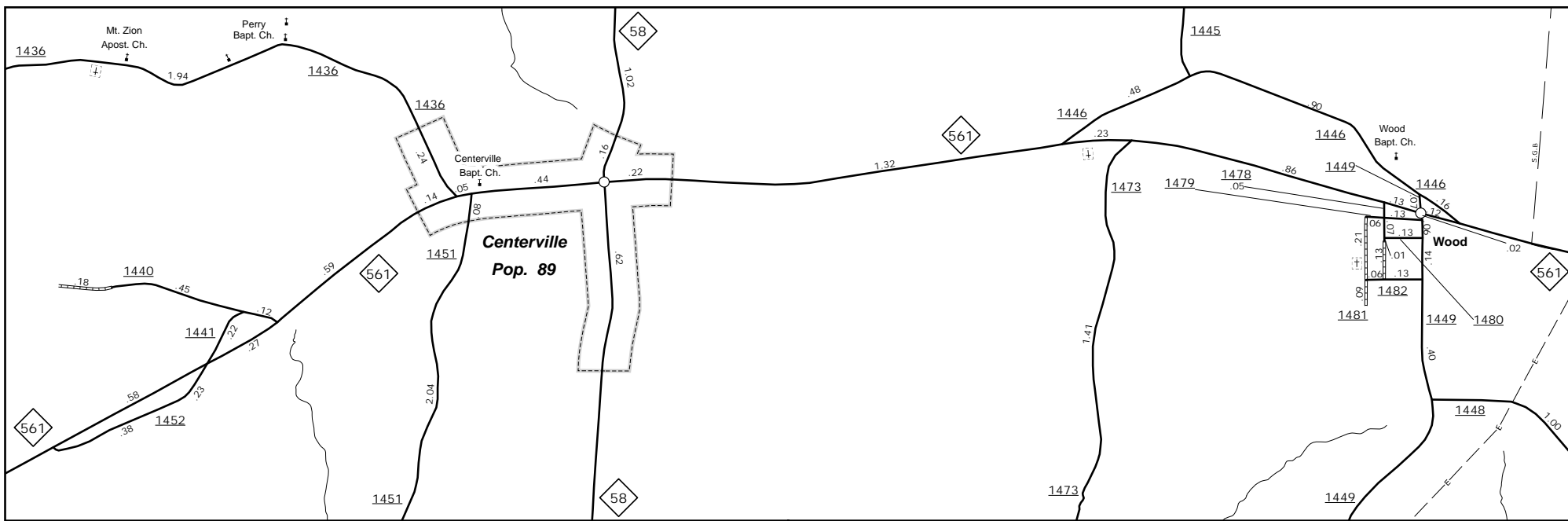
COPIES OF THIS MAP ARE AVAILABLE
AT THE PUBLIC INFORMATION COST
ADDRESS:
N.C. DEPARTMENT OF TRANSPORTATION
MS&U - MAPPING SECTION
4809 BERN LEO
RALEIGH, NC 27605



Louisville



Pilot



Centerville

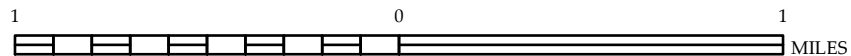


ENLARGED MUNICIPAL AND SUBURBAN AREAS

FRANKLIN COUNTY NORTH CAROLINA

PREPARED BY THE
NORTH CAROLINA DEPARTMENT OF TRANSPORTATION
MANAGEMENT SYSTEMS AND ASSESSMENTS UNIT - MAPPING SECTION
IN COOPERATION WITH THE
U.S. DEPARTMENT OF TRANSPORTATION
FEDERAL HIGHWAY ADMINISTRATION

SCALE



10,000 FOOT GRID BASED ON NORTH CAROLINA PLANE COORDINATE SYSTEM
LAMBERT CONFORMAL CONIC PROJECTION

SHEET 2 OF 4