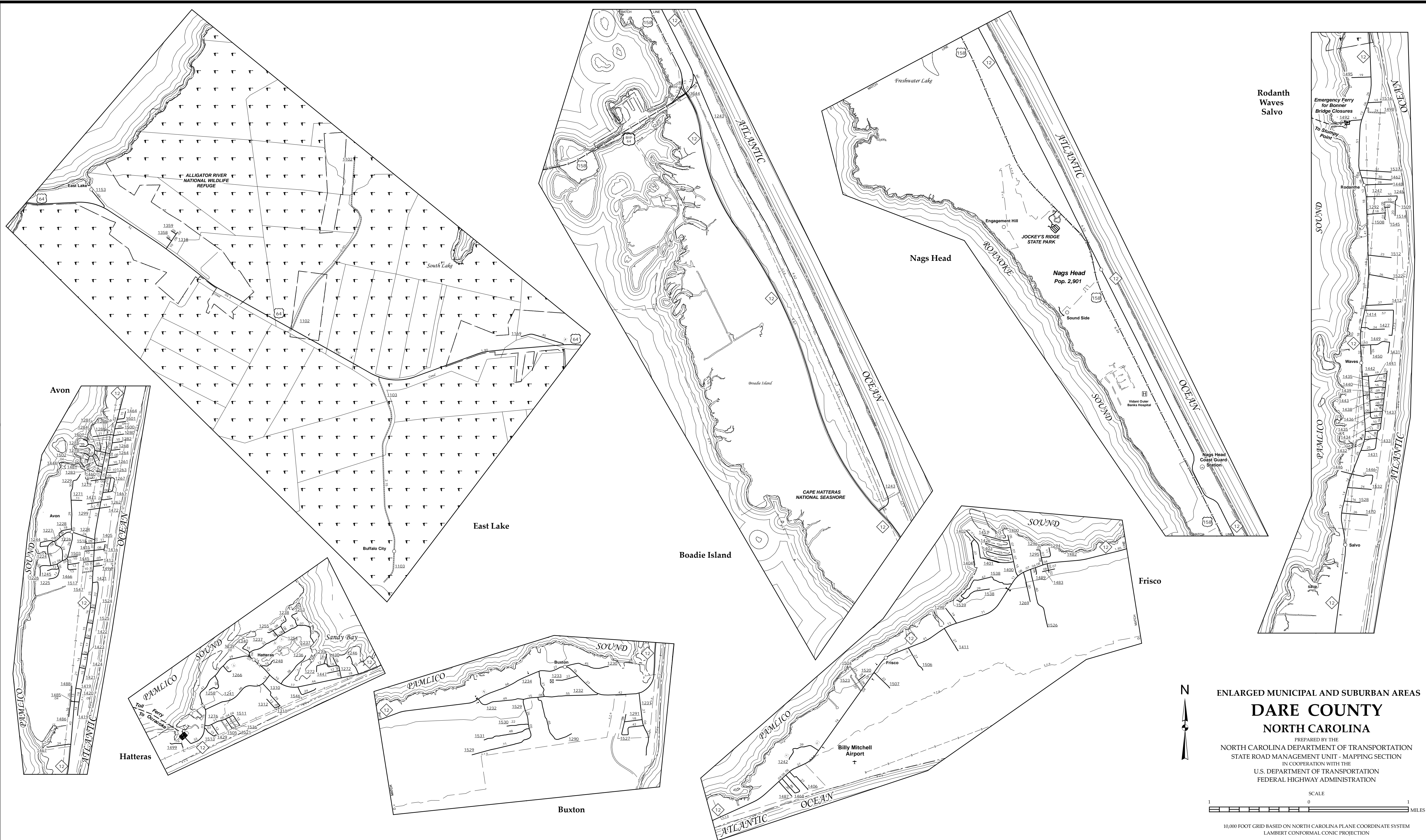


The MS&T's goal is to provide the most accurate and current information possible. Map data is compiled from numerous sources with varying degrees of accuracy and timeliness. As a result, roads and important non-system roads. This map was last updated on June 2015. For additional information, visit <http://www.ncdot.gov/transportation/mapping> and click on Data Providers or contact us at (919) 855-8480.

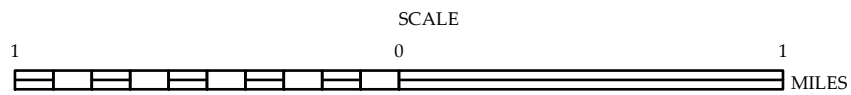
COPIES OF THIS MAP ARE AVAILABLE  
FROM THE PUBLIC INFORMATION COST  
ADDRESS:  
N.C. DEPARTMENT OF TRANSPORTATION  
SKAU - MAPPING SECTION  
4809 BERT RD.  
RALEIGH, NC 27605



ENLARGED MUNICIPAL AND SUBURBAN AREAS

## DARE COUNTY NORTH CAROLINA

PREPARED BY THE  
NORTH CAROLINA DEPARTMENT OF TRANSPORTATION  
STATE ROAD MANAGEMENT UNIT - MAPPING SECTION  
IN COOPERATION WITH THE  
U.S. DEPARTMENT OF TRANSPORTATION  
FEDERAL HIGHWAY ADMINISTRATION



10,000 FOOT GRID BASED ON NORTH CAROLINA PLANE COORDINATE SYSTEM  
LAMBERT CONFORMAL CONIC PROJECTION