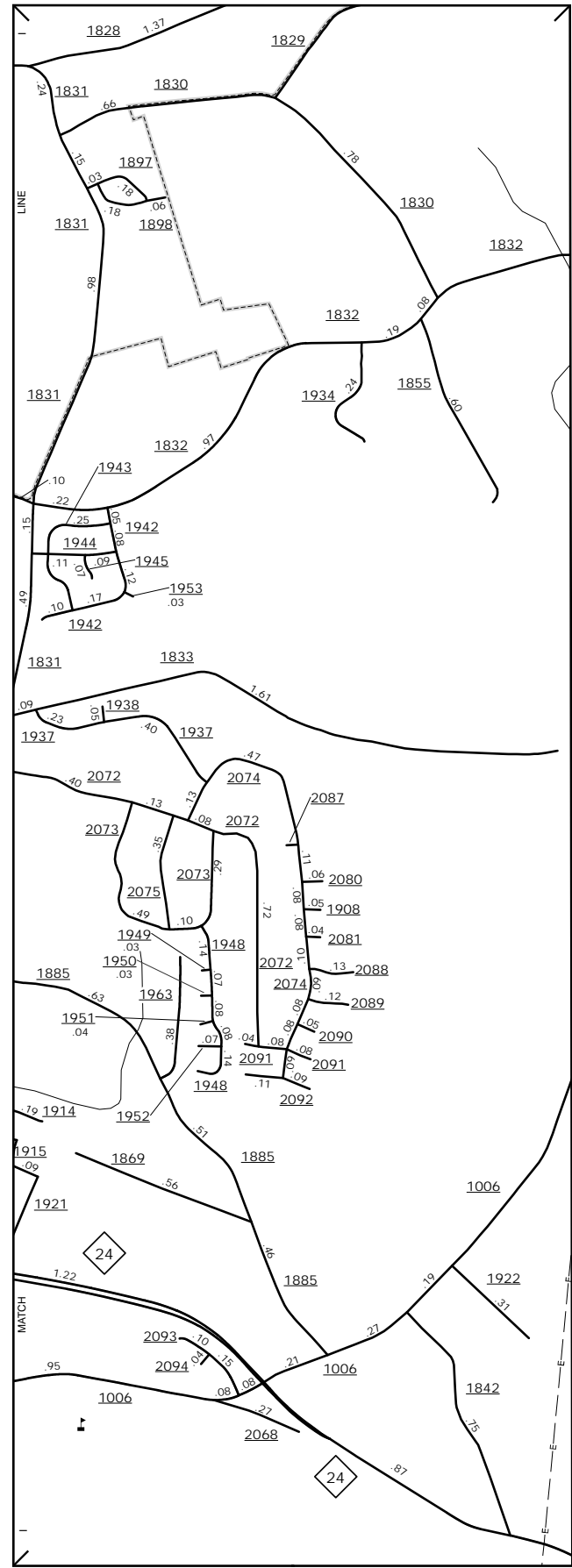
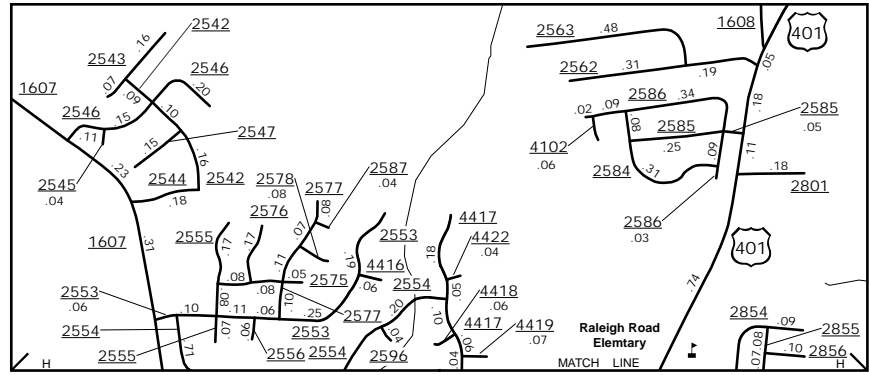


The MS&T's goal is to provide the most accurate and current information possible. Map data is compiled from numerous sources with varying levels of accuracy and is not intended to be used for navigation. As a result, there may be some discrepancies between the map and actual conditions. The MS&T's goal is to provide the most accurate and current information possible. Map data is compiled from numerous sources with varying levels of accuracy and is not intended to be used for navigation. As a result, there may be some discrepancies between the map and actual conditions. The MS&T's goal is to provide the most accurate and current information possible. Map data is compiled from numerous sources with varying levels of accuracy and is not intended to be used for navigation. As a result, there may be some discrepancies between the map and actual conditions.

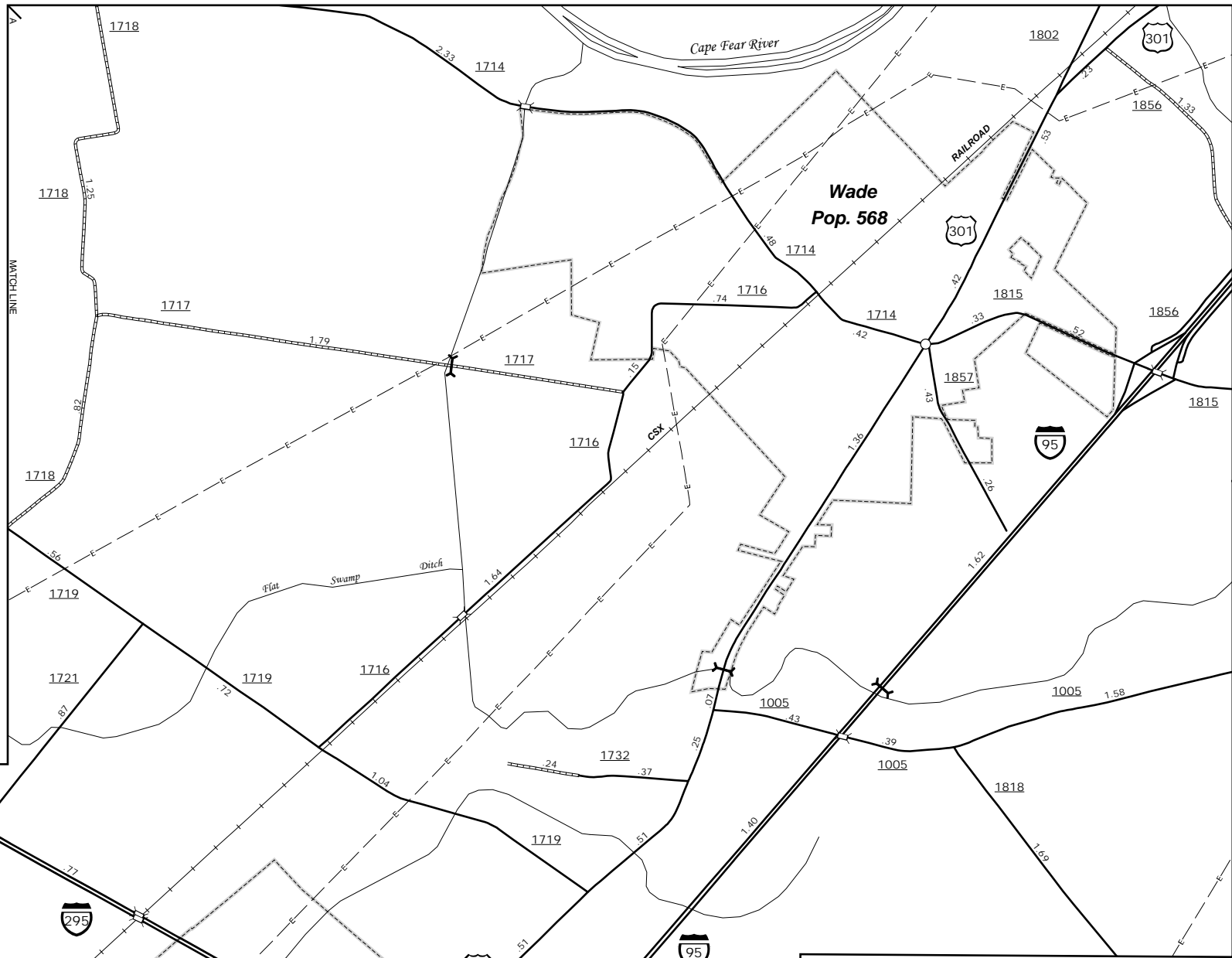
COPIES OF THIS MAP ARE AVAILABLE
FROM THE NORTH CAROLINA
DEPARTMENT OF TRANSPORTATION
ADDRESS: 4809 BERNARD
N.C. DEPARTMENT OF TRANSPORTATION
MS&T - MAPPING SECTION
4809 BERNARD
Raleigh, NC 27609



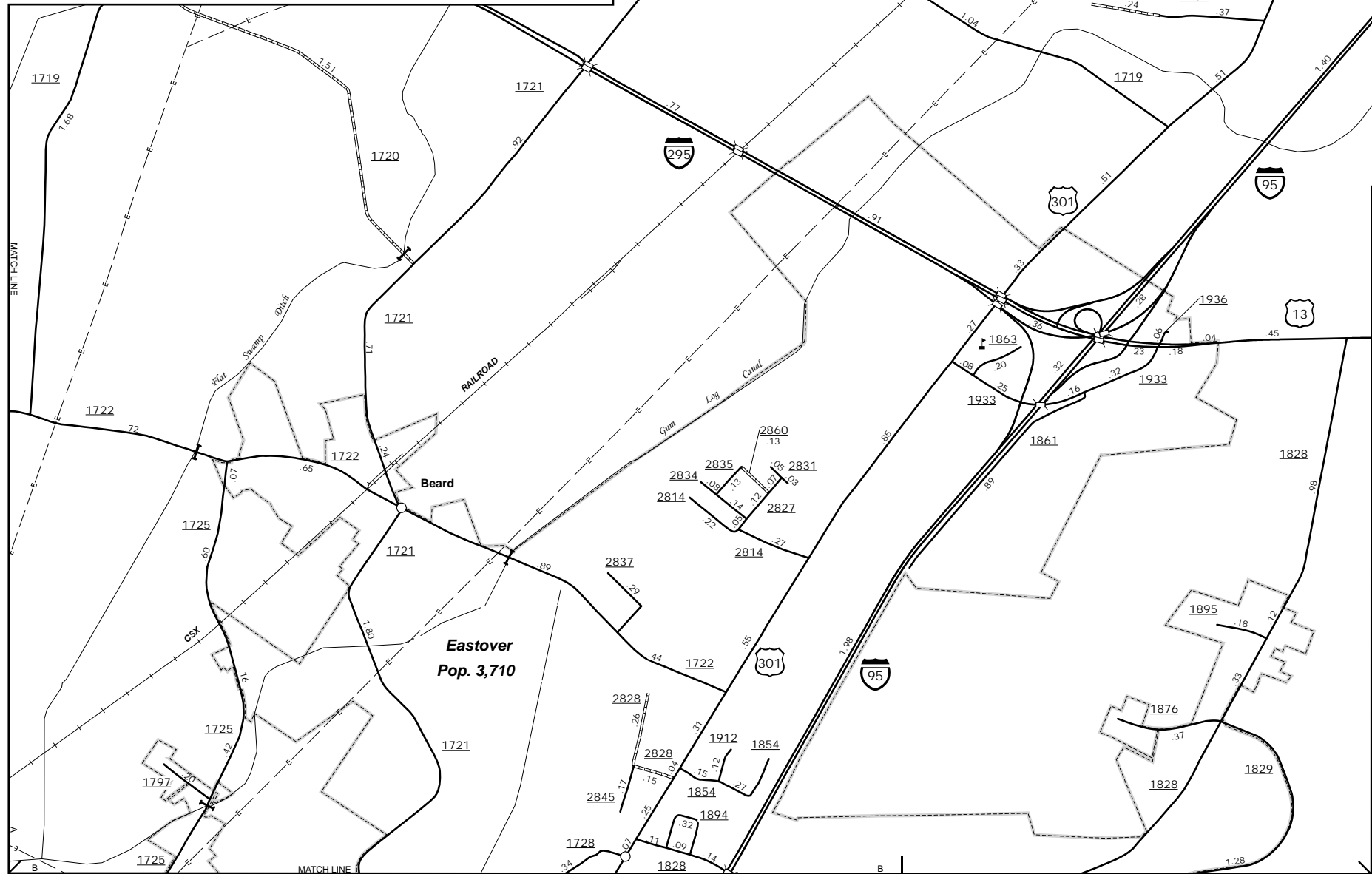
East Fayetteville



Inset 2



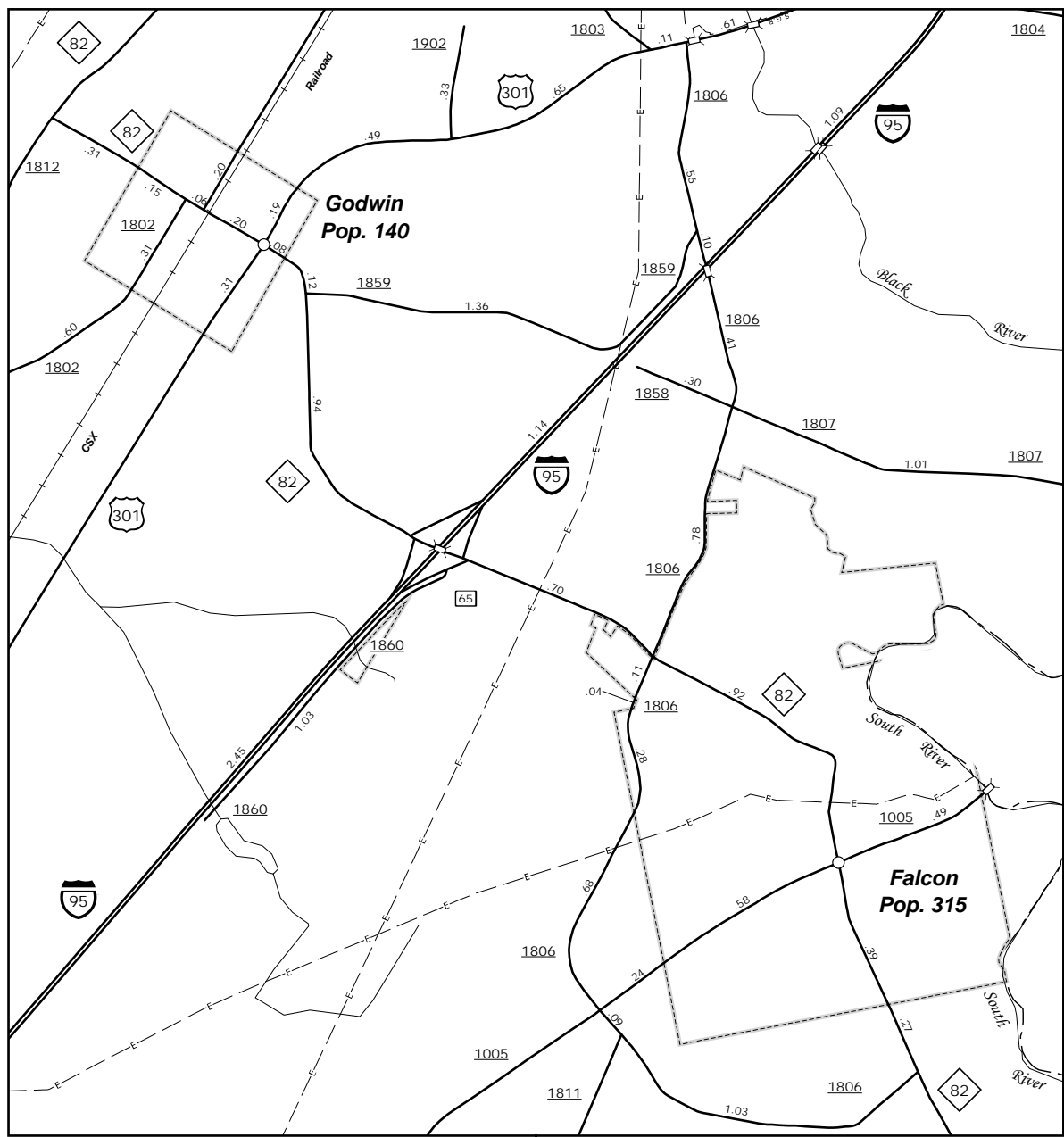
Wade



Eastover
Pop. 3,710



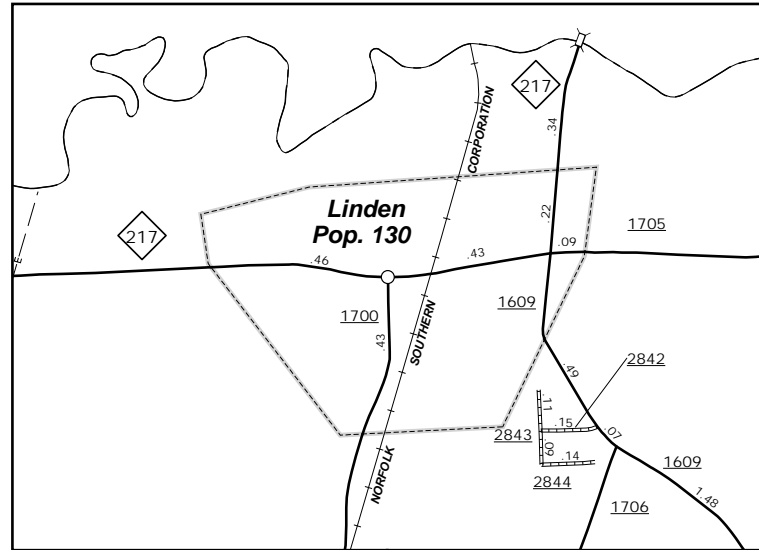
Western Cumberland



Godwin
Pop. 140

Falcon
Pop. 315

Falcon

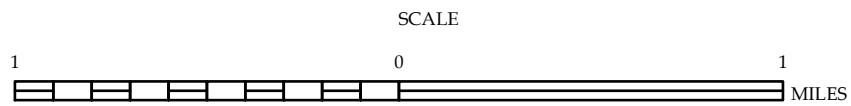


Linden



ENLARGED MUNICIPAL AND SUBURBAN AREAS CUMBERLAND COUNTY NORTH CAROLINA

PREPARED BY THE
NORTH CAROLINA DEPARTMENT OF TRANSPORTATION
MANAGEMENT SYSTEMS AND ASSESSMENTS UNIT - MAPPING SECTION
IN COOPERATION WITH THE
U.S. DEPARTMENT OF TRANSPORTATION
FEDERAL HIGHWAY ADMINISTRATION



10,000 FOOT GRID BASED ON NORTH CAROLINA PLANE COORDINATE SYSTEM
LAMBERT CONFORMAL CONIC PROJECTION