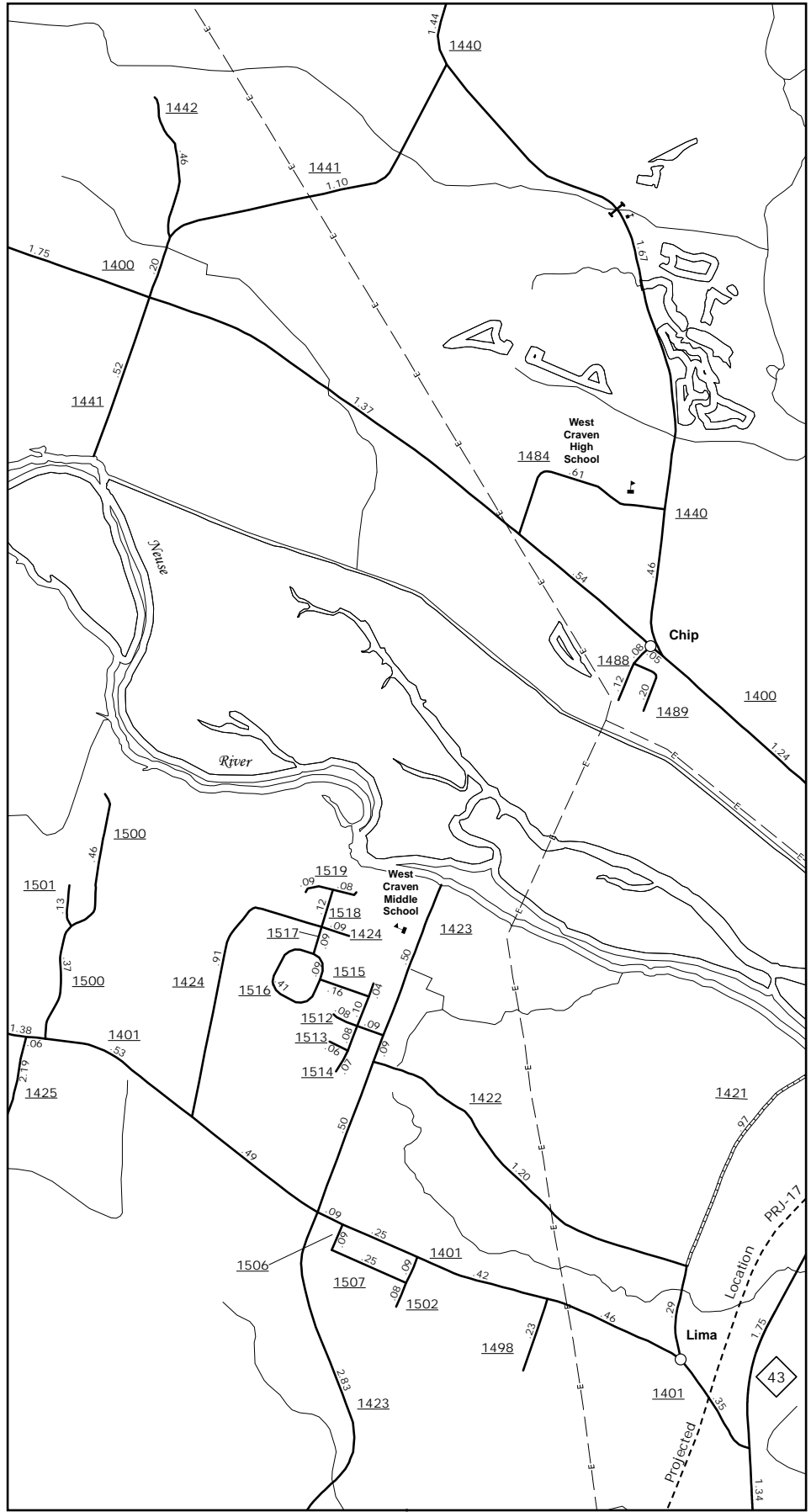
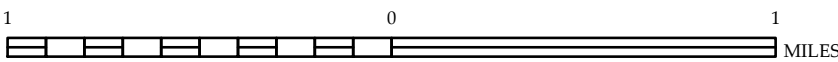


The MS&U's goal is to provide the most accurate and current information possible. Map data is compiled from numerous sources including aerial photography, ground surveys, and other data. As a result, roads and other features may not always be shown in the exact location or with the exact dimensions as they appear in reality. The MS&U is not responsible for any errors or omissions. For additional information, visit <http://www.ncdot.gov/infrastructure/transportation/MS&U/MS&U.asp> and click on Data Providers or contact us at (919) 855-4460.

COPIES OF THIS MAP ARE AVAILABLE  
AT THE PUBLIC INFORMATION COST  
ADDRESS:  
N.C. DEPARTMENT OF TRANSPORTATION  
MS&U - MAPPING SECTION  
4809 BERRY LANE  
RALEIGH, NC 27606



Chip and Lima



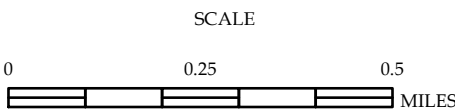
New Bern 8x Inset



ENLARGED MUNICIPAL AND SUBURBAN AREAS

## CRAVEN COUNTY NORTH CAROLINA

PREPARED BY THE  
NORTH CAROLINA DEPARTMENT OF TRANSPORTATION  
MANAGEMENT SYSTEMS AND ASSESSMENTS UNIT - MAPPING SECTION  
IN COOPERATION WITH THE  
U.S. DEPARTMENT OF TRANSPORTATION  
FEDERAL HIGHWAY ADMINISTRATION



10,000 FOOT GRID BASED ON NORTH CAROLINA PLANE COORDINATE SYSTEM  
LAMBERT CONFORMAL CONIC PROJECTION