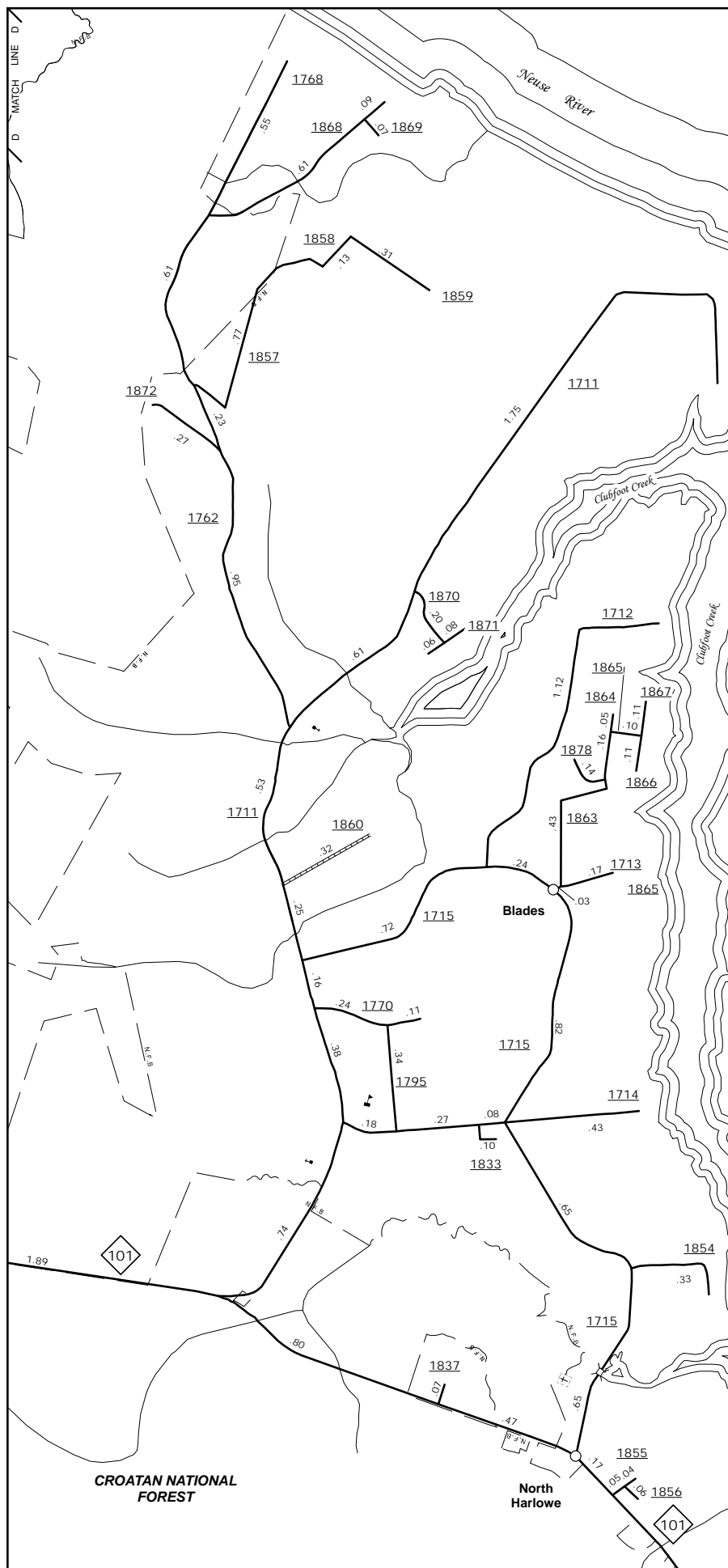


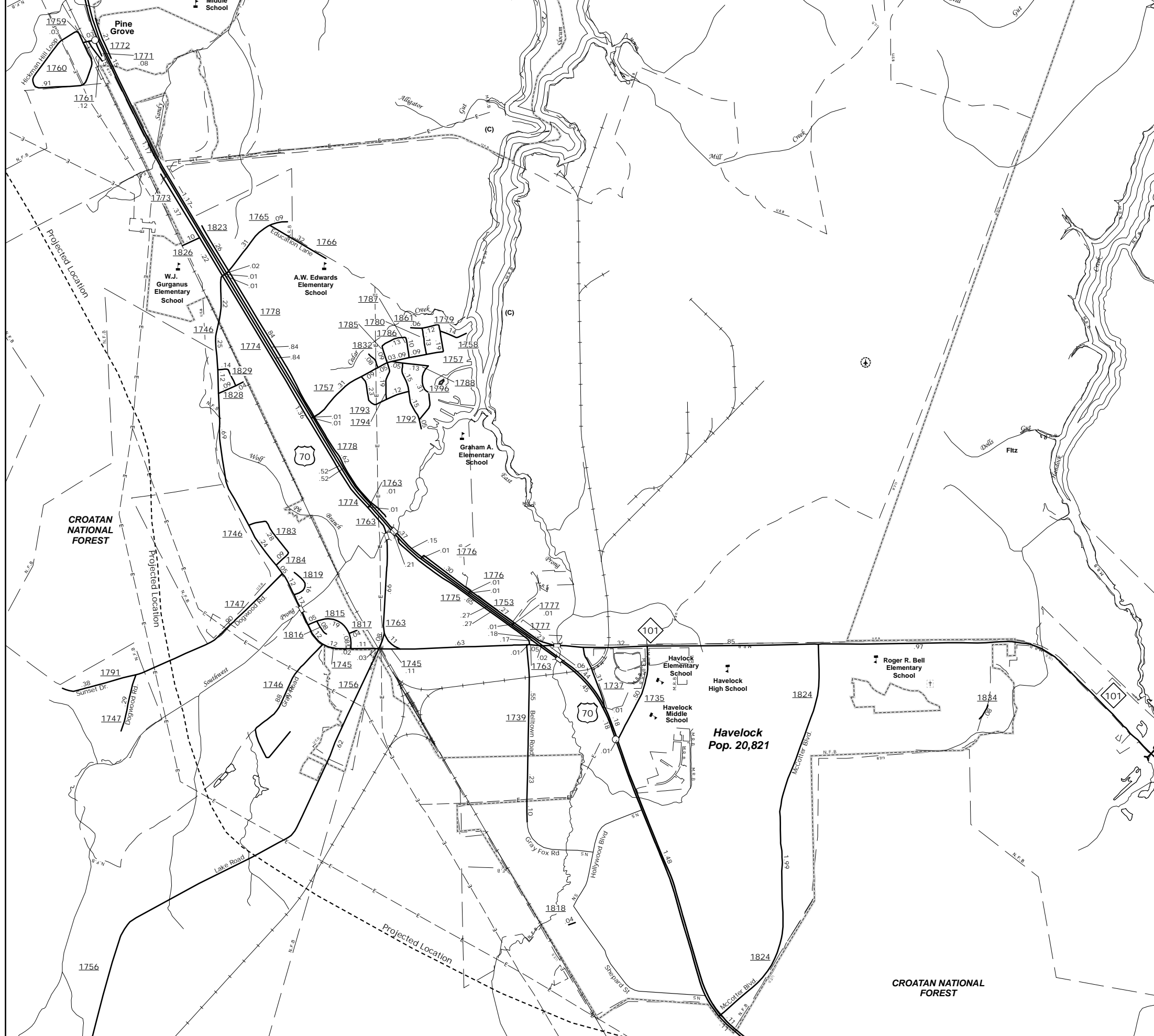
The MS&U's goal is to provide the most accurate and current information possible. Map data is compiled from numerous sources with varying degrees of periodicity and accuracy. As a result, roads and other features may not always be shown in the most current locations. For additional information, visit <http://www.ncdot.gov/infrastructure/mapping> and click on Data Providers or contact us at (919) 855-4460.

COPIES OF THIS MAP ARE AVAILABLE  
FROM THE PUBLIC AT NOMINAL COST  
ADDRESS: N.C. DEPARTMENT OF TRANSPORTATION  
MS&U - MAPPING SECTION  
4809 BERTL RD.  
RALEIGH, NC 27605

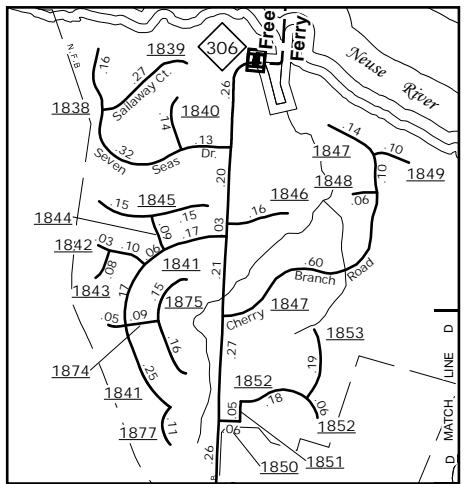
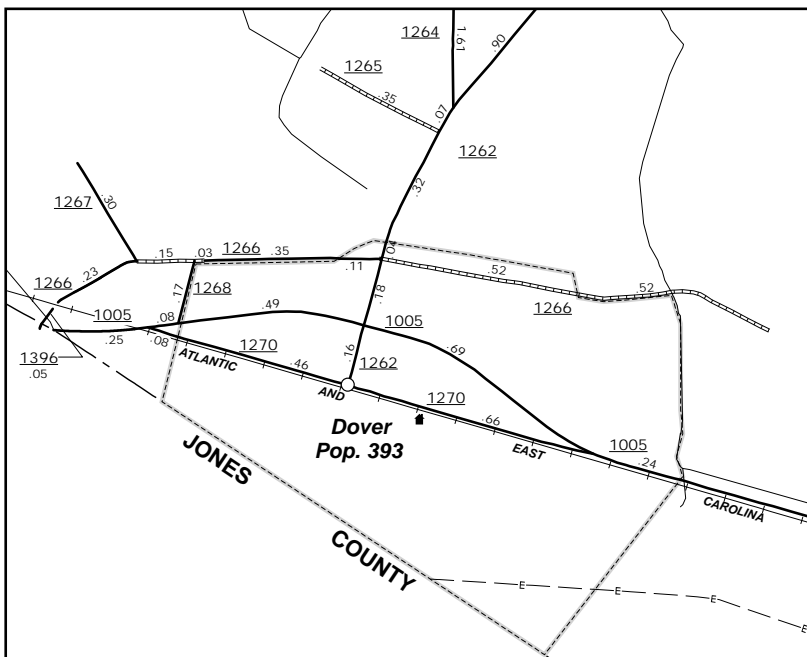
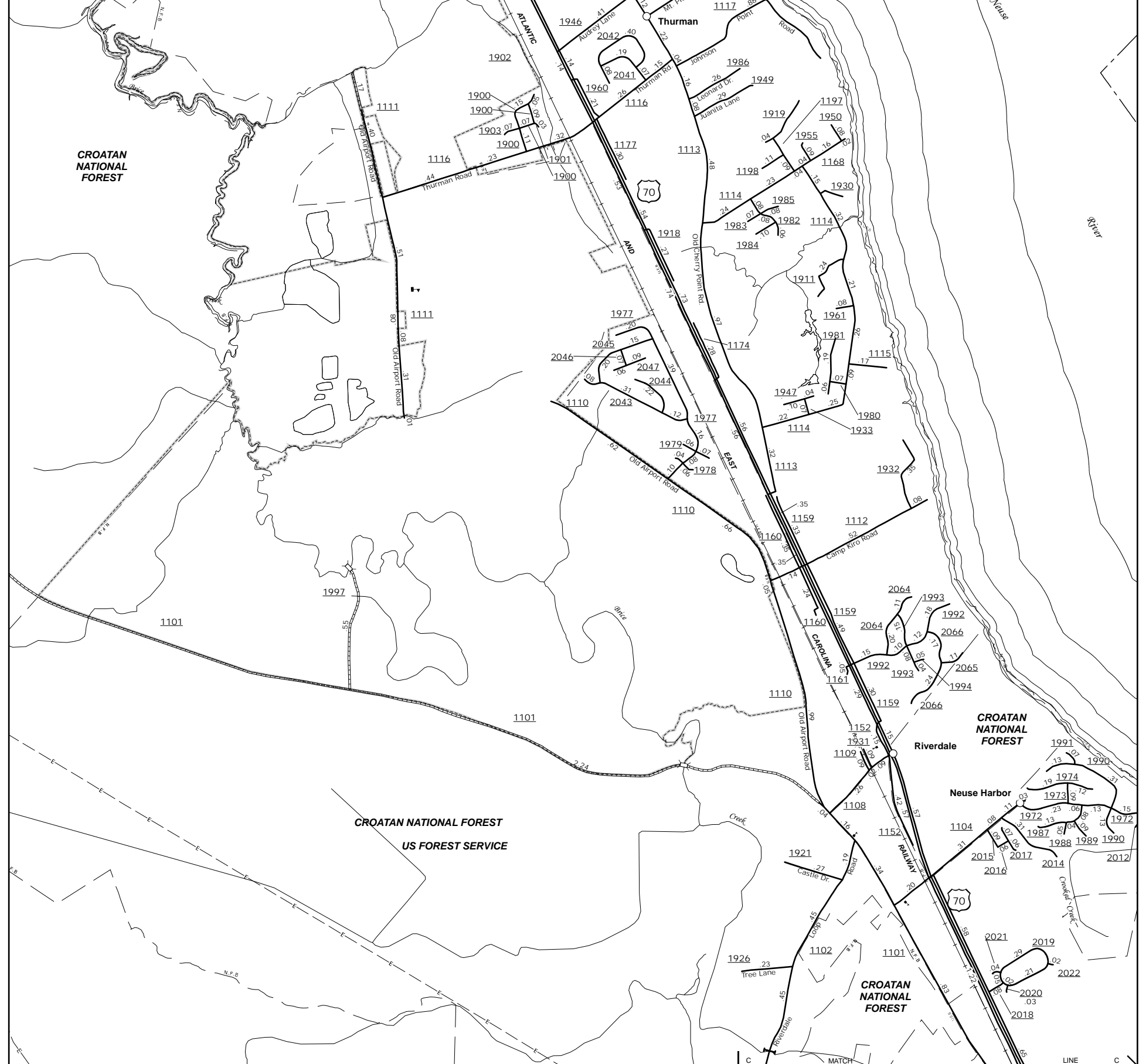
### Blades and North Harlowe



### Cherry Point Marine Corps Air Station



### New Bern Pop. 29,889



### Thurman, James City

### Craven Free Ferry

### ENLARGED MUNICIPAL AND SUBURBAN AREAS

## CRAVEN COUNTY NORTH CAROLINA

PREPARED BY THE  
NORTH CAROLINA DEPARTMENT OF TRANSPORTATION  
MANAGEMENT SYSTEMS AND ASSESSMENTS UNIT - MAPPING SECTION  
IN COOPERATION WITH THE  
U.S. DEPARTMENT OF TRANSPORTATION  
FEDERAL HIGHWAY ADMINISTRATION

SCALE  
1 0 1  
MILES

10,000 FOOT GRID BASED ON NORTH CAROLINA PLANE COORDINATE SYSTEM  
LAMBERT CONFORMAL CONIC PROJECTION

SHEET 3 OF 4