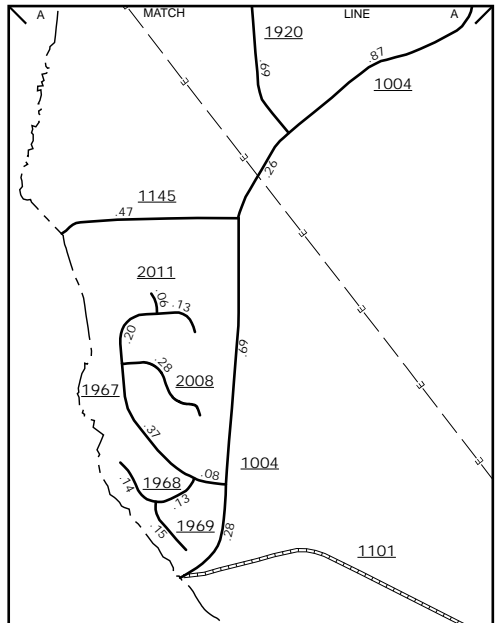
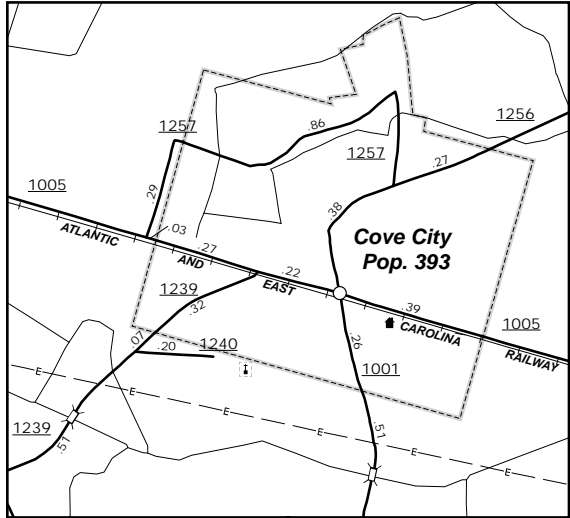
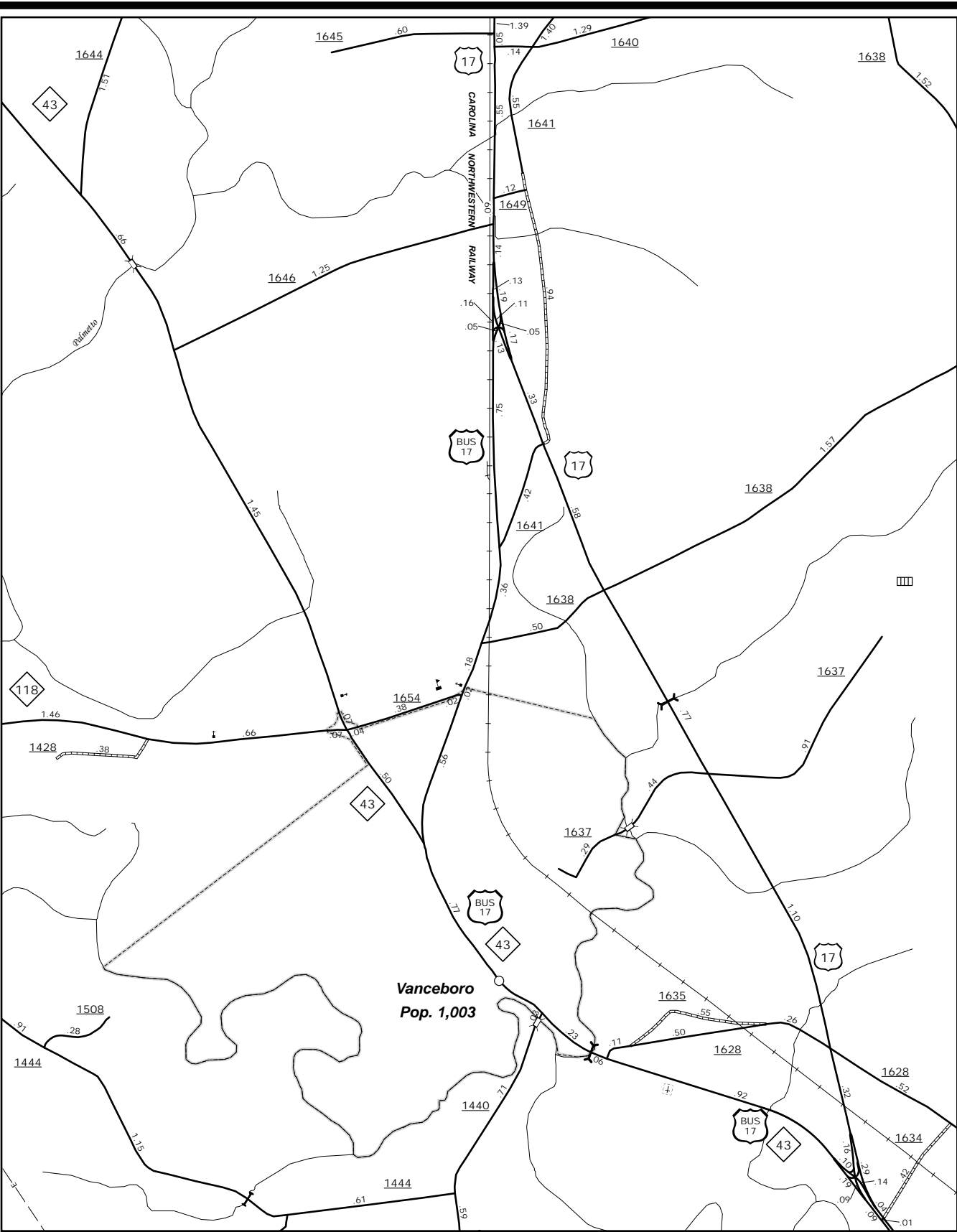


The MS&U's goal is to provide the most accurate and current information possible. Map data is compiled from numerous sources with varying degrees of accuracy and timeliness. As a result, roads and important non-system roads. This map was last updated on June 2014. For additional information, visit <http://www.ncdot.gov/infrastructure/mapping> and click on Data Providers or contact us at (818) 835-8480.

COPIES OF THIS MAP ARE AVAILABLE
FOR PURCHASE AT A PUBLIC NOTIONAL COST
ADDRESS: N.C. DEPARTMENT OF TRANSPORTATION
MS&U - MAPPING SECTION
4809 BERT LEO
COLUMBIA, NC 28038



Vanceboro

Cove City

Brice's Creek Road
New Bern

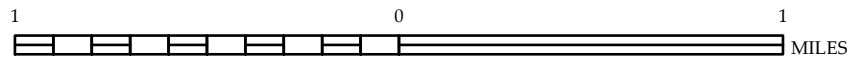


ENLARGED MUNICIPAL AND SUBURBAN AREAS

Craven County North Carolina

PREPARED BY THE
NORTH CAROLINA DEPARTMENT OF TRANSPORTATION
MANAGEMENT SYSTEMS AND ASSESSMENTS UNIT - MAPPING SECTION
IN COOPERATION WITH THE
U.S. DEPARTMENT OF TRANSPORTATION
FEDERAL HIGHWAY ADMINISTRATION

SCALE



10,000 FOOT GRID BASED ON NORTH CAROLINA PLANE COORDINATE SYSTEM
LAMBERT CONFORMAL CONIC PROJECTION

SHEET 2 OF 4