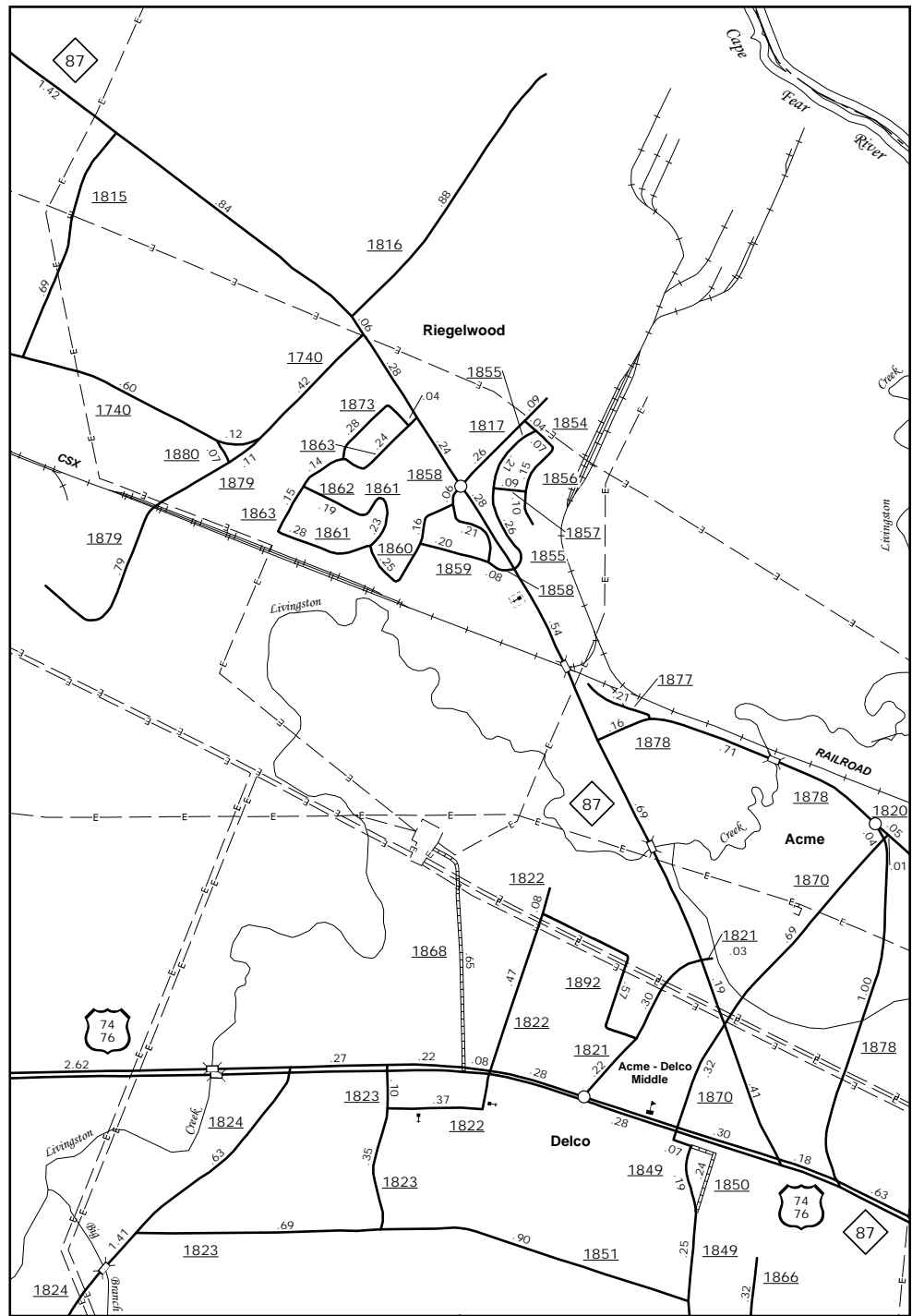


The MS&U's goal is to provide the most accurate and current information possible. Map data is compiled from numerous sources including aerial photography, ground surveys, and other data. As a result, there may be some discrepancies between the map and the actual ground conditions. The MS&U is not responsible for any errors or omissions. For additional information, visit <http://www.ncdot.gov/transportation/mapping>, and click on Data Providers or contact us at (819) 835-8480.

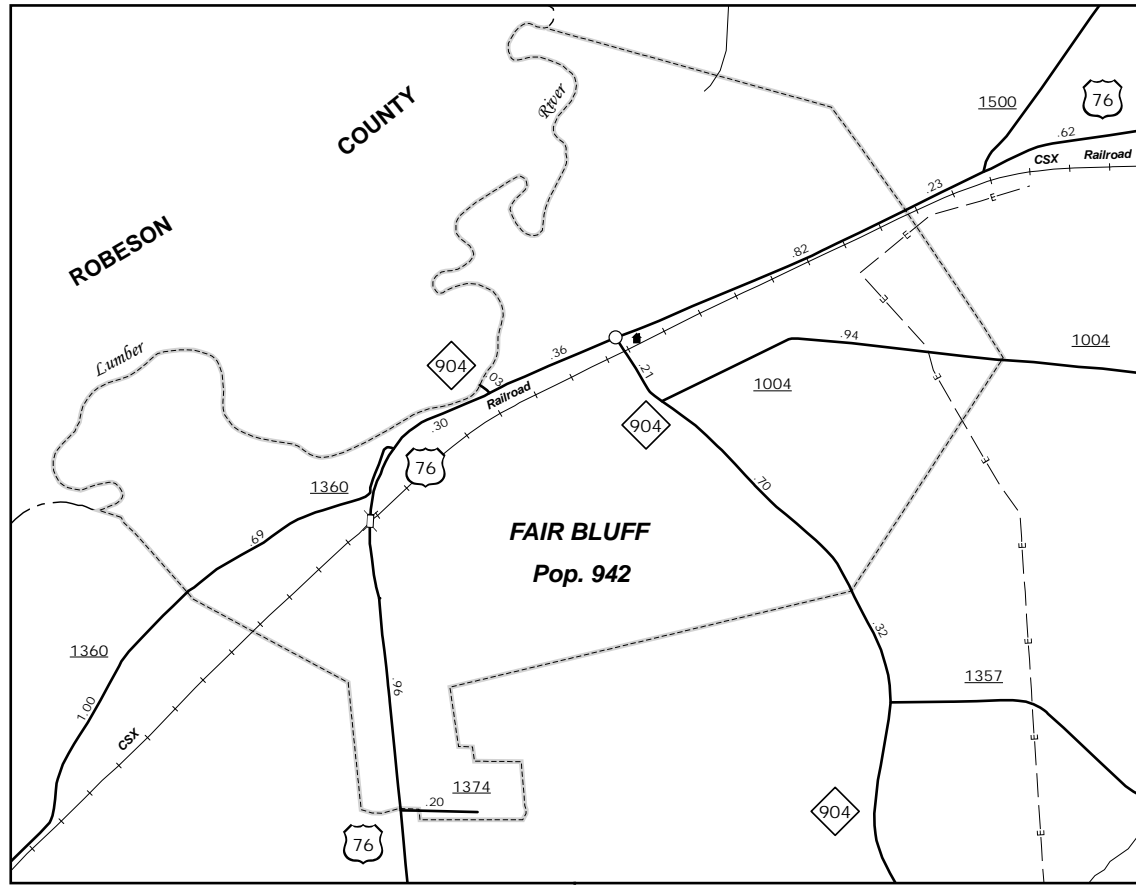
COPIES OF THIS MAP ARE AVAILABLE
FOR PURCHASE AT A PUBLIC AT NOMINAL COST.
ADDRESS: N.C. DEPARTMENT OF TRANSPORTATION
MS&U - MAPPING SECTION
4809 BERT RD.
Raleigh, NC 27609



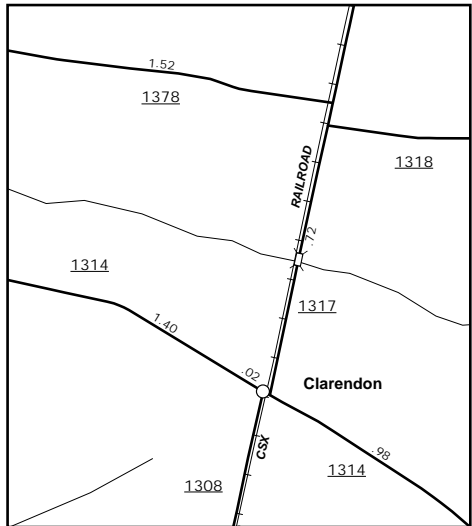
Tabor City



Acme



Fair Bluff



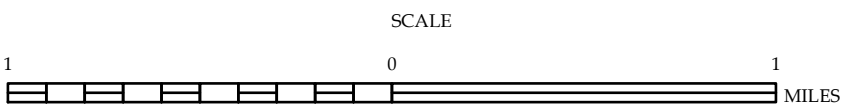
Clarendon



ENLARGED MUNICIPAL AND SUBURBAN AREAS

COLUMBUS COUNTY NORTH CAROLINA

PREPARED BY THE
NORTH CAROLINA DEPARTMENT OF TRANSPORTATION
MANAGEMENT SYSTEMS AND ASSESSMENTS UNIT - MAPPING SECTION
IN COOPERATION WITH THE
U.S. DEPARTMENT OF TRANSPORTATION
FEDERAL HIGHWAY ADMINISTRATION



10,000 FOOT GRID BASED ON NORTH CAROLINA PLANE COORDINATE SYSTEM
LAMBERT CONFORMAL CONIC PROJECTION