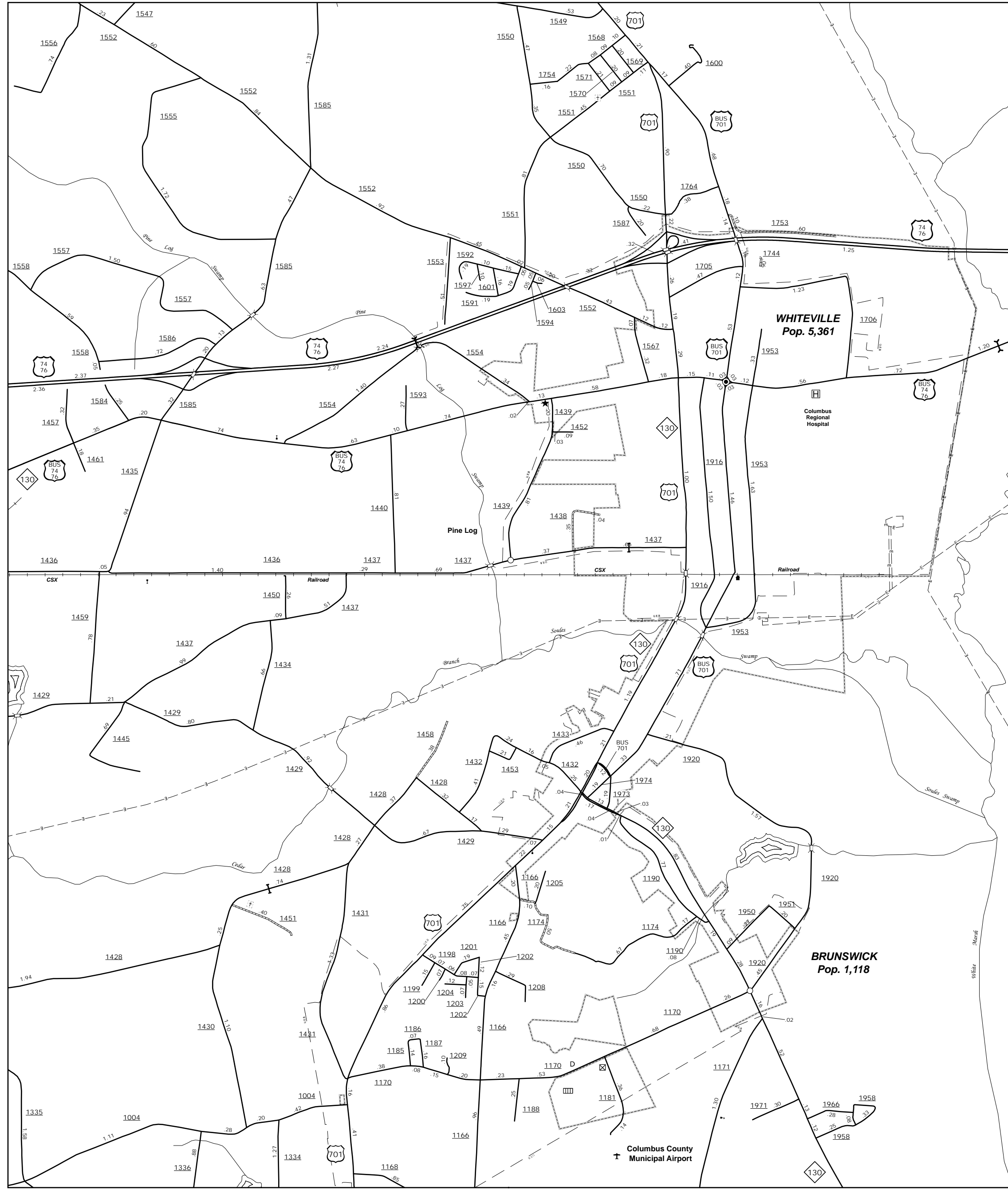
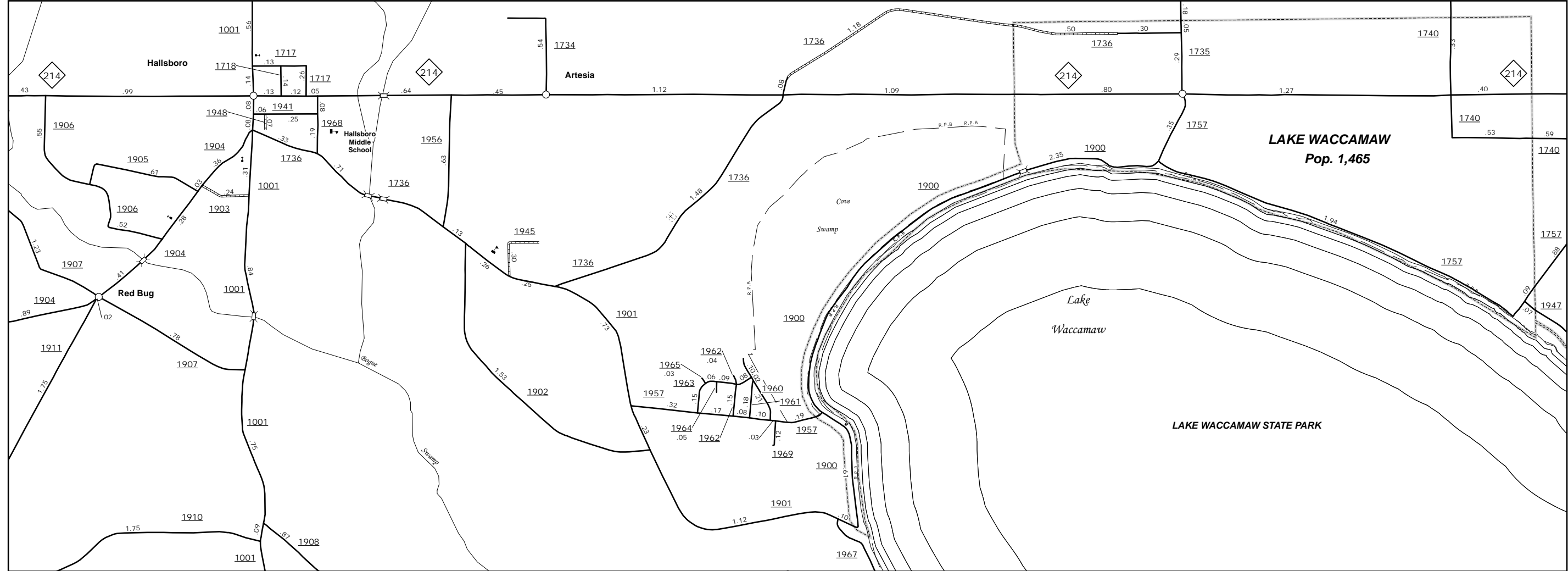


The MS&T's goal is to provide the most accurate and current information possible. Map data is compiled from numerous sources including aerial photography, ground surveys, and other data. As a result, roads and other features may not be shown in the exact location or at the exact scale as they appear in reality. The MS&T's goal is to provide the most accurate and current information possible. Map data is compiled from numerous sources including aerial photography, ground surveys, and other data. As a result, roads and other features may not be shown in the exact location or at the exact scale as they appear in reality.

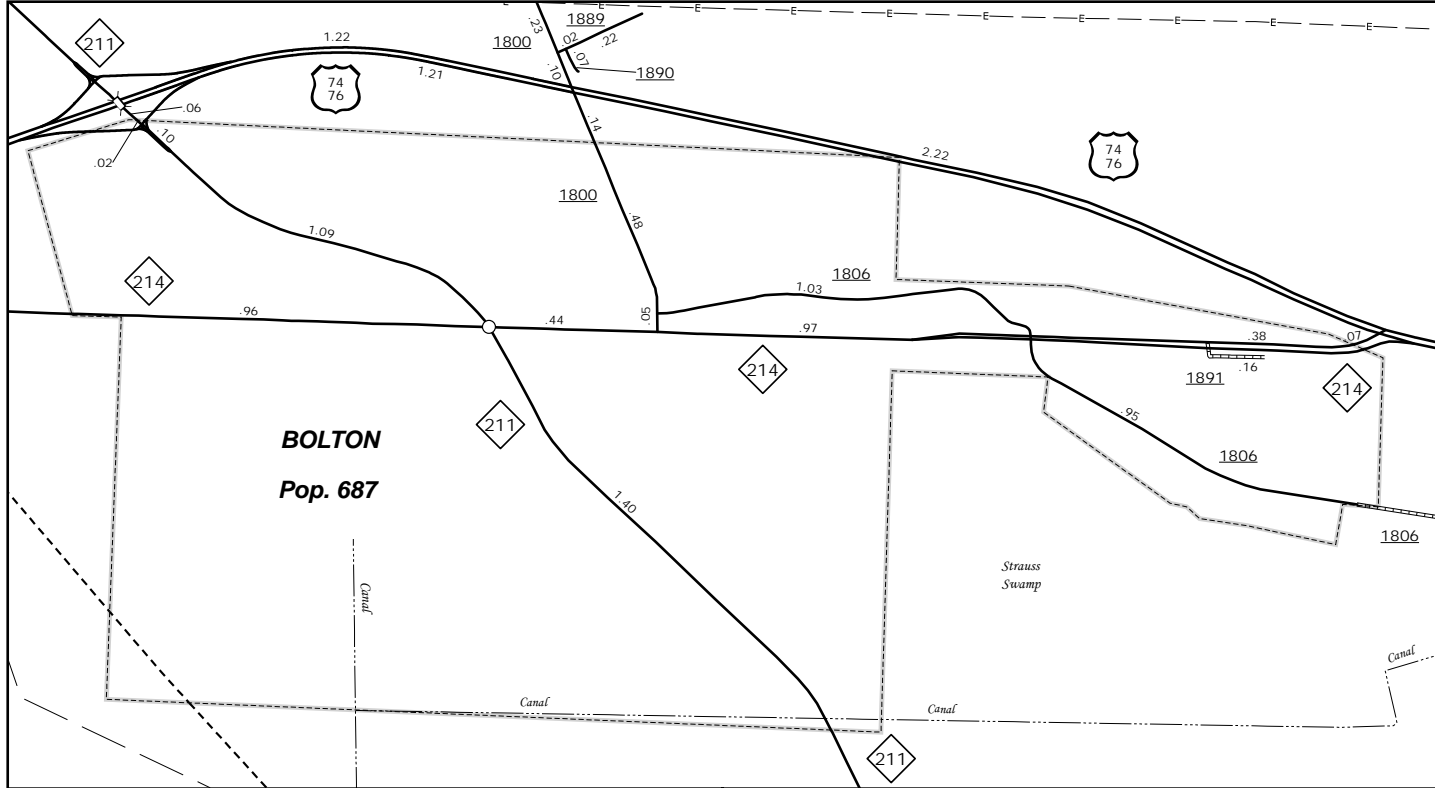
COPIES OF THIS MAP ARE AVAILABLE  
FROM THE NORTH CAROLINA DEPARTMENT OF TRANSPORTATION  
ADDRESS: 4800 BERNARD DRIVE, SUITE 200  
Raleigh, NC 27609



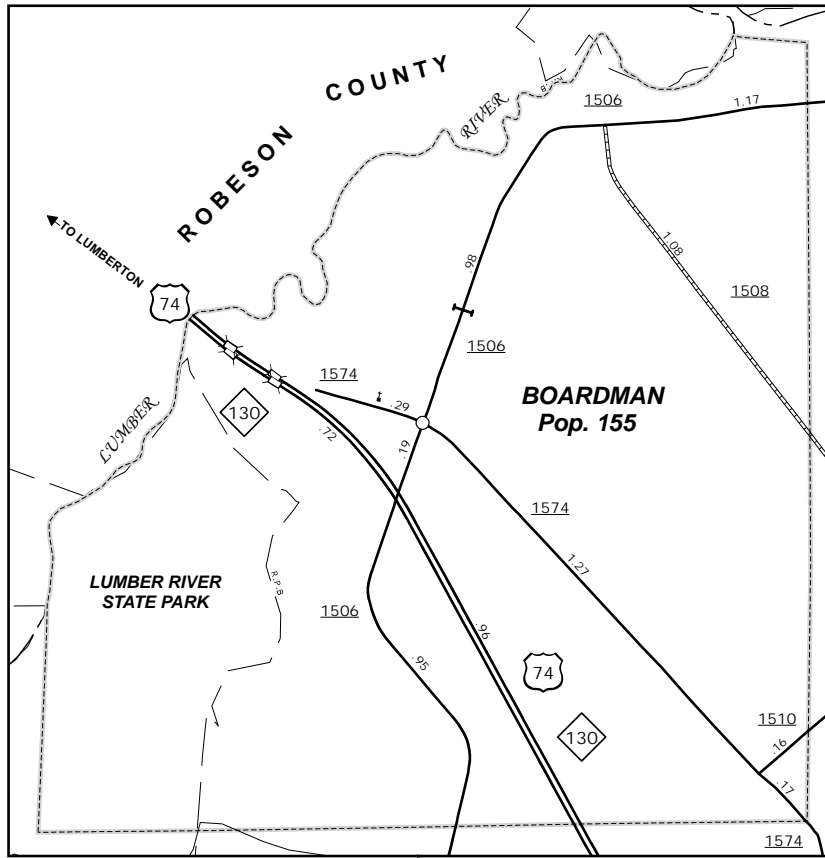
Whiteville



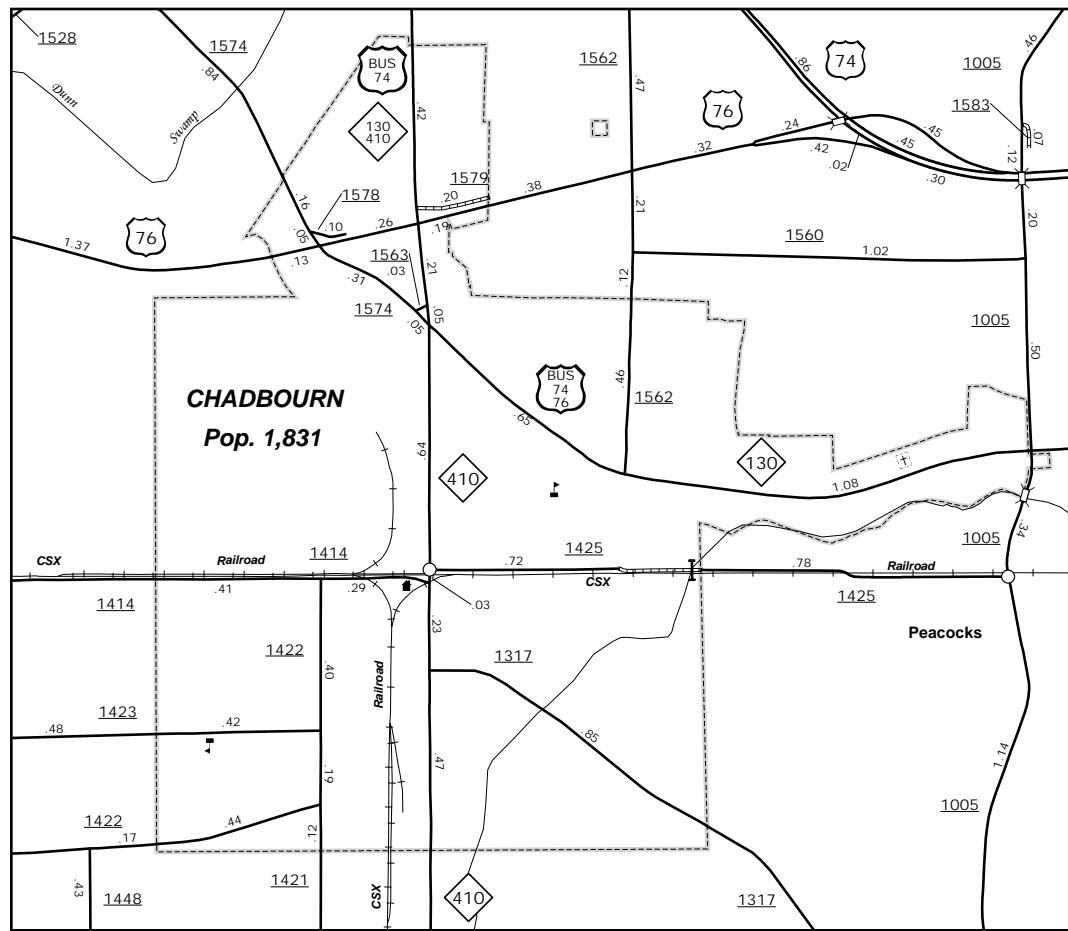
Lake Waccamaw



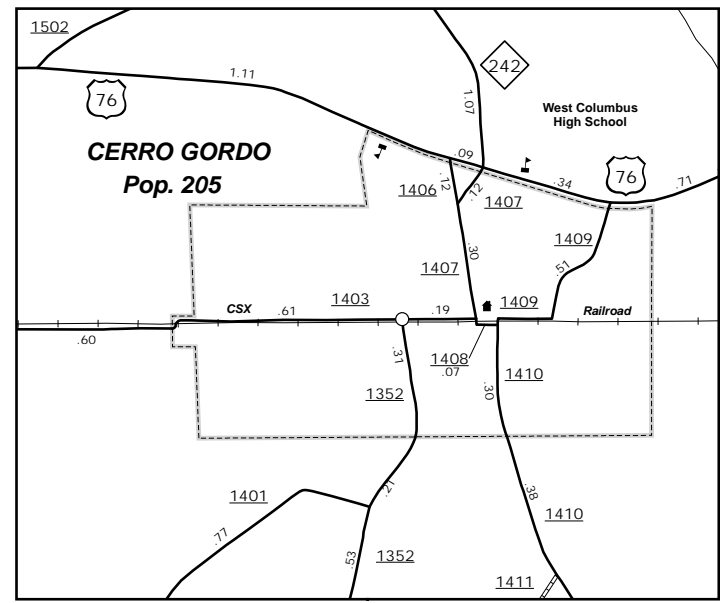
Bolton



Boardman



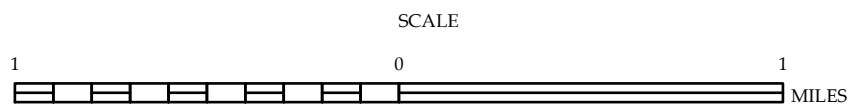
Chadbourne



Cerro Gordo

## ENLARGED MUNICIPAL AND SUBURBAN AREAS COLUMBUS COUNTY NORTH CAROLINA

PREPARED BY THE  
NORTH CAROLINA DEPARTMENT OF TRANSPORTATION  
MANAGEMENT SYSTEMS AND ASSESSMENTS UNIT - MAPPING SECTION  
IN COOPERATION WITH THE  
U.S. DEPARTMENT OF TRANSPORTATION  
FEDERAL HIGHWAY ADMINISTRATION



10,000 FOOT GRID BASED ON NORTH CAROLINA PLANE COORDINATE SYSTEM  
LAMBERT CONFORMAL CONIC PROJECTION