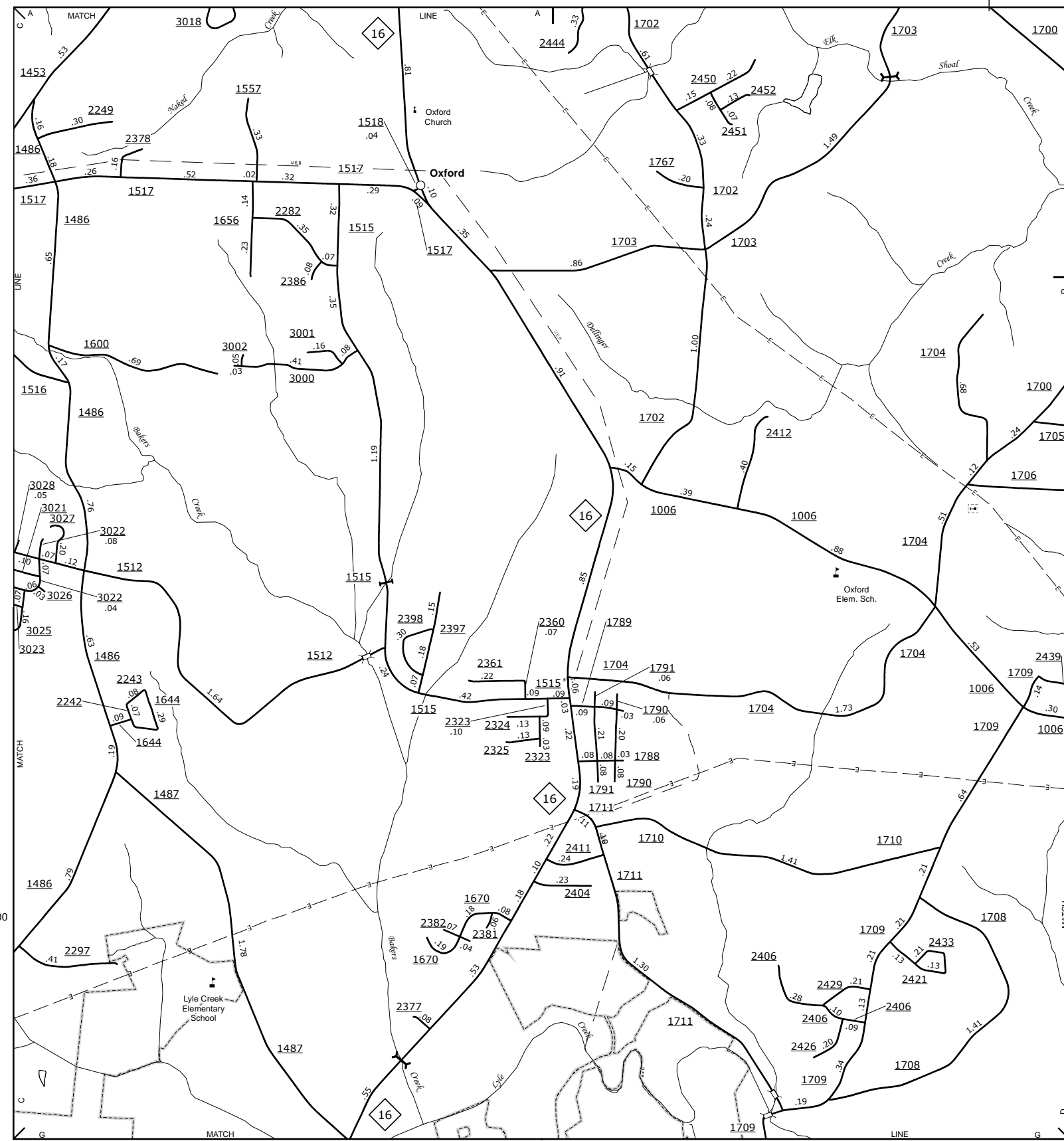
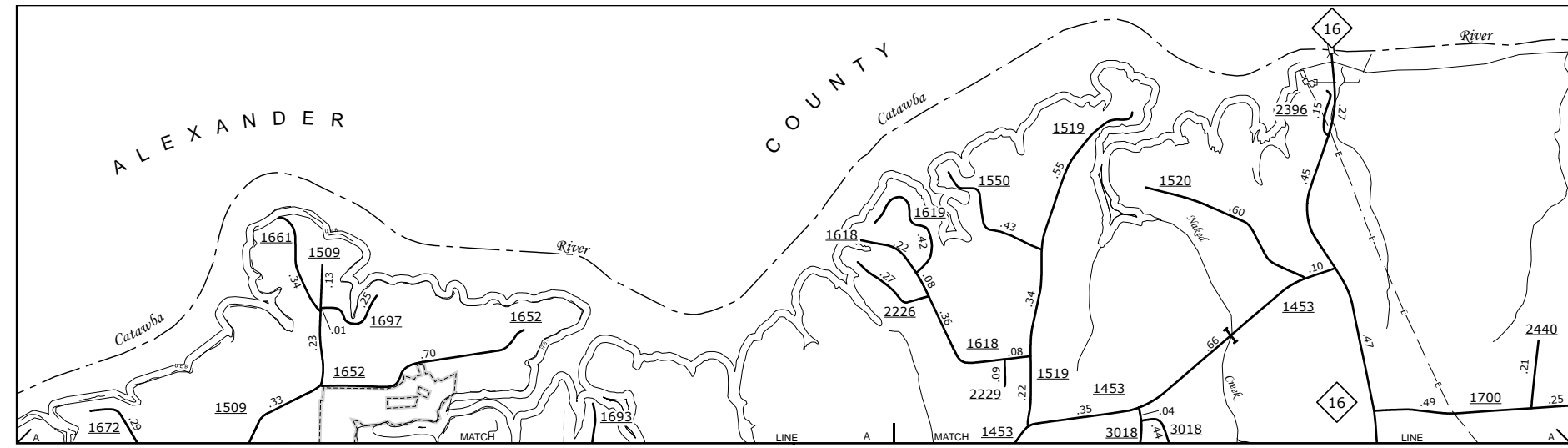
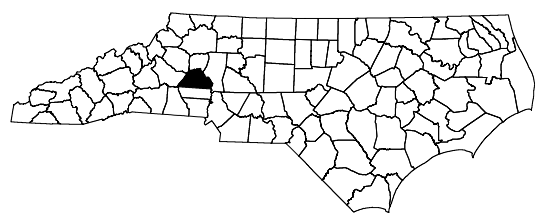
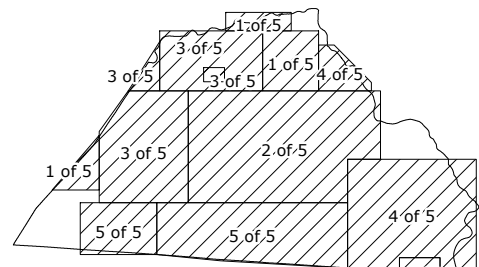


The MS&U's goal is to provide the most accurate and current information possible. Map data is compiled from numerous sources and is not guaranteed to be 100% accurate. As a result, roads and other features may not be shown in the correct location or may be shown in the wrong direction. The MS&U is not responsible for any errors or omissions. For additional information, visit <http://www.ncdot.gov/transportation/mapping> and click on Data Providers or contact us at (819) 934-5480.

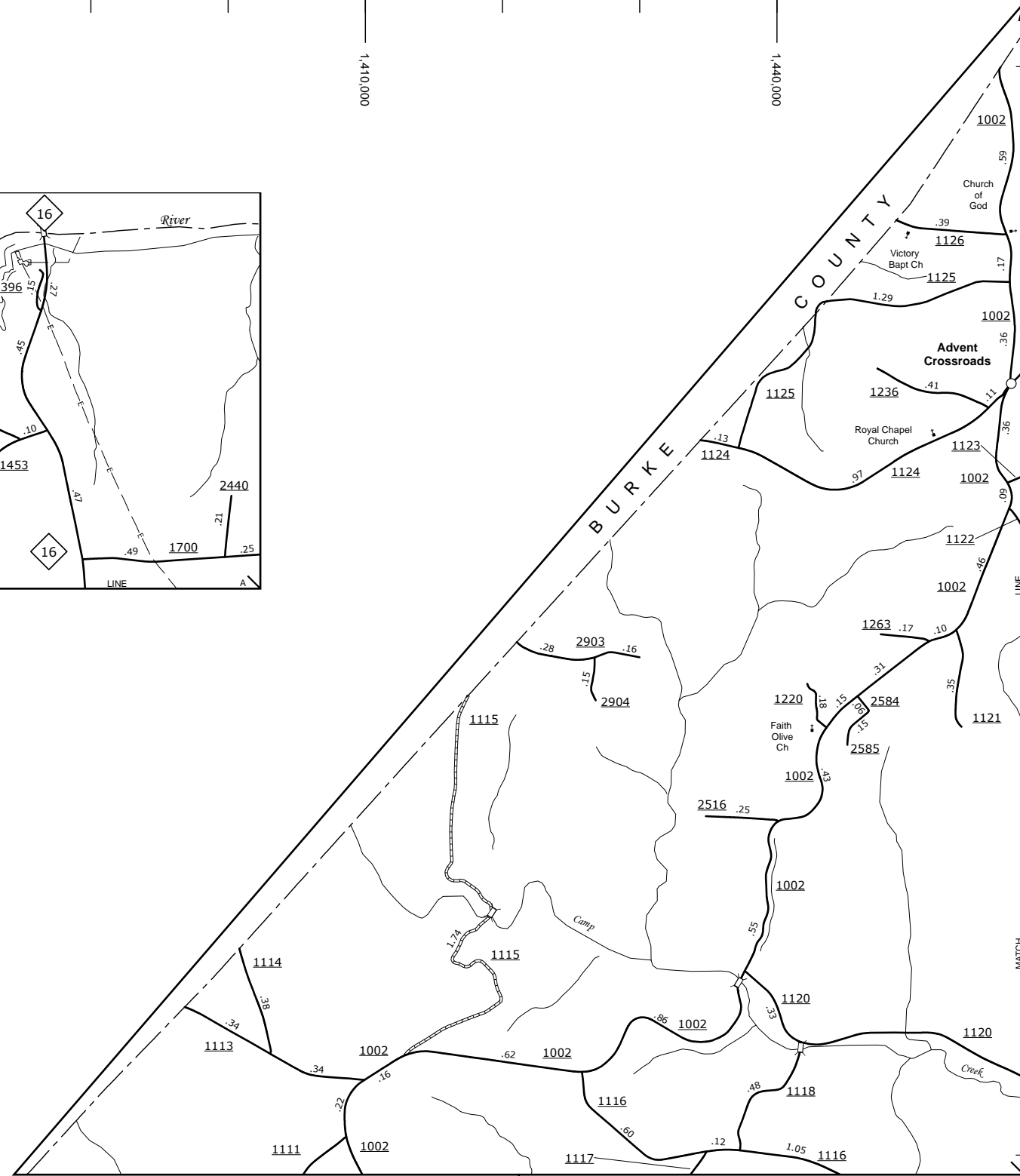
COPIES OF THIS MAP ARE AVAILABLE
FROM THE NORTH CAROLINA DEPARTMENT OF TRANSPORTATION
ADDRESS: N.C. DEPARTMENT OF TRANSPORTATION
MS&U-MAPPING SECTION
4809 BERT RD
RALEIGH, NC 27609



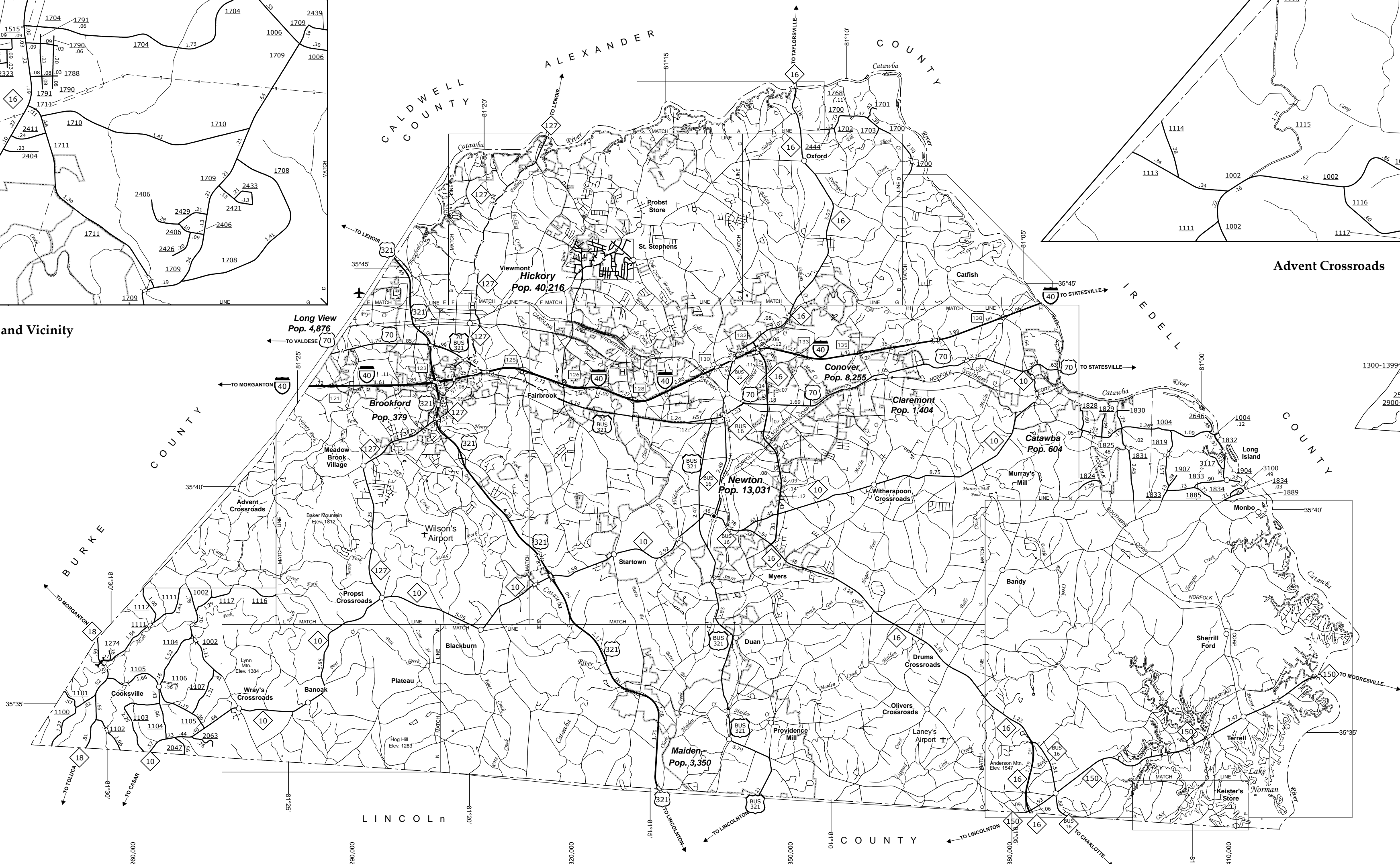
Oxford and Vicinity



Upper Catawba



Advent Crossroads

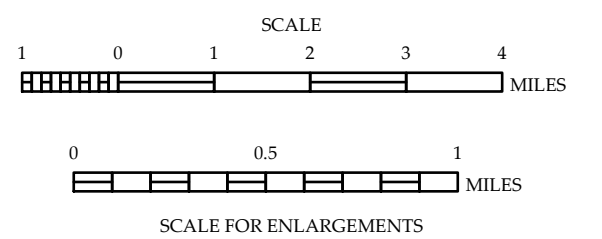


- LEGEND
- UNPAVED SURFACED ROAD
 - HARD SURFACED ROAD
 - 4-LANE UNDIVIDED HIGHWAY
 - DIVIDED HIGHWAY W/FRONTAGE ROADS
 - FULL CONTROL ACCESS (INSETS)
 - NON-SYSTEM ROADS
 - PREDICTED LOCATION
 - NATIONAL PARK ROAD
 - BLUE RIDGE PARKWAY
 - INTERSECTION DISTANCE
 - TRAFFIC CIRCLE
 - DETAILED HIGHWAY INTERCHANGE
 - ROAD THROUGH MOUNTAIN PASS
 - HIGHWAY BRIDGE
 - RAILROAD BRIDGE
 - DRAW SPAN ON BRIDGE
 - PEDESTRIAN BRIDGE
 - PEDESTRIAN WALKWAY
 - PEDESTRIAN UNDERPASS
 - VEHICULAR UNDERPASS
 - FORD
 - TUNNEL
 - CULVERT
 - PIPE
 - INTERSTATE HIGHWAY
 - U.S. NUMBERED HIGHWAY
 - N.C. NUMBERED HIGHWAY
 - U.S. NUMBERED BICYCLE ROUTE
 - N.C. NUMBERED BICYCLE ROUTE
 - INTERSTATE INTERCHANGE NUMBER
 - SECONDARY ROAD NUMBER
 - UTILITY LINES
 - RAILROAD
 - RAILROAD STATION
 - GRADE CROSSING
 - INSET AREA
 - URBAN EXTENSION LINE
 - NATIONAL FOREST BOUNDARY
 - RESERVATION OR PARK BOUNDARY
 - STATE FOREST BOUNDARY
 - STATE GAMLAND BOUNDARY
 - FEDERAL GAMLAND BOUNDARY
 - MILITARY RESERVATION BOUNDARY
 - STATE LINE
 - COUNTY LINE
 - CITY LIMIT
 - FERRY ROUTE
 - CANAL
 - NARROW CREEK OR STREAM
 - WIDE RIVER OR CREEK
 - RESERVOIR, POND OR LAKE W/ ISLAND
 - DAM OR DAM WITH LOCK
 - WATERFALL
 - SWAMP
 - COMMUNITY, TOWN OR CITY CENTER
 - COUNTY SEAT
 - STATE CAPITAL
 - SCHOOL
 - COLLEGE OR UNIVERSITY
 - HOSPITAL
 - COAST GUARD STATION
 - CHURCH
 - CHURCH WITH CEMETERY
 - CEMETERY
 - CORRECTION OR PENAL INSTITUTION
 - QUARRY
 - MINE OR PIT
 - HIGHWAY GARAGE OR MAINT. YARD
 - HIGHWAY DIV. OR DIST. OFFICE
 - POST OFFICE
 - MILITARY POST
 - WILDLIFE REFUGE
 - WEIGH STATION
 - FAIRGROUNDS
 - HISTORICAL SITE
 - POINTS OF INTEREST
 - STATE FOREST
 - LIGHTHOUSE
 - MOUNTAIN SUMMIT
 - OVERLOOK
 - GEODETIC MARKER
 - REST AREA
 - VISITOR CTR. REST AREA
 - WELCOME CTR. REST AREA
 - MAJOR AIRPORT
 - AIRPORT
 - MILITARY AIRPORT
 - HELIPORT



CATAWBA COUNTY NORTH CAROLINA

PREPARED BY THE
NORTH CAROLINA DEPARTMENT OF TRANSPORTATION
MANAGEMENT SYSTEMS AND ASSESSMENT UNIT - MAPPING SECTION
IN COOPERATION WITH THE
U.S. DEPARTMENT OF TRANSPORTATION
FEDERAL HIGHWAY ADMINISTRATION



10,000 FOOT GRID BASED ON NORTH CAROLINA PLANE COORDINATE SYSTEM
LAMBERT CONFORMAL CONIC PROJECTION