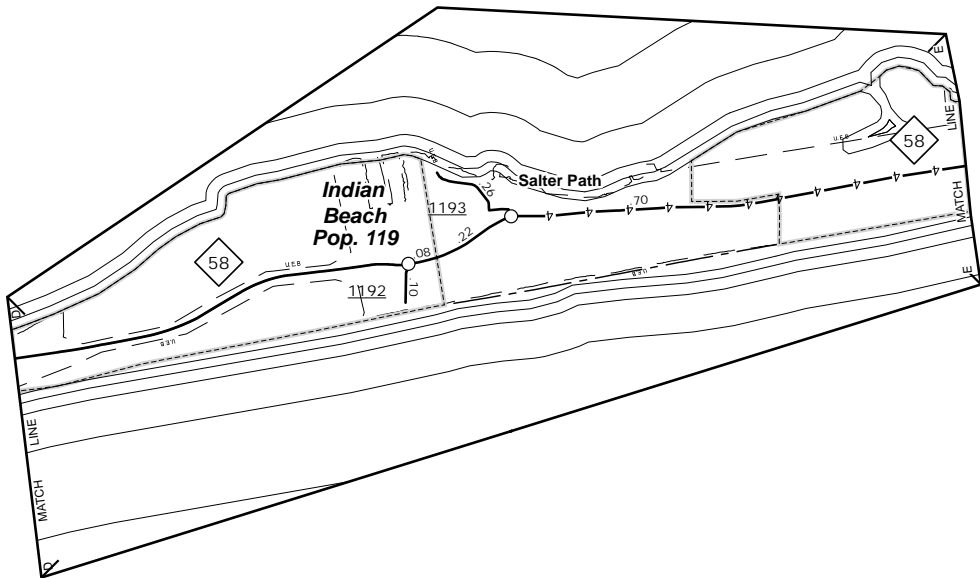


The MS&U's goal is to provide the most accurate and current information possible. Map data is compiled from numerous sources with varying degrees of accuracy and reliability. As a result, roads and important non-system roads. The information was last updated on June 1, 2014. For additional information, visit <http://www.ncdot.gov/infrastructure/infrastructure.aspx> and click on Data Providers or contact us at (919) 855-4460.

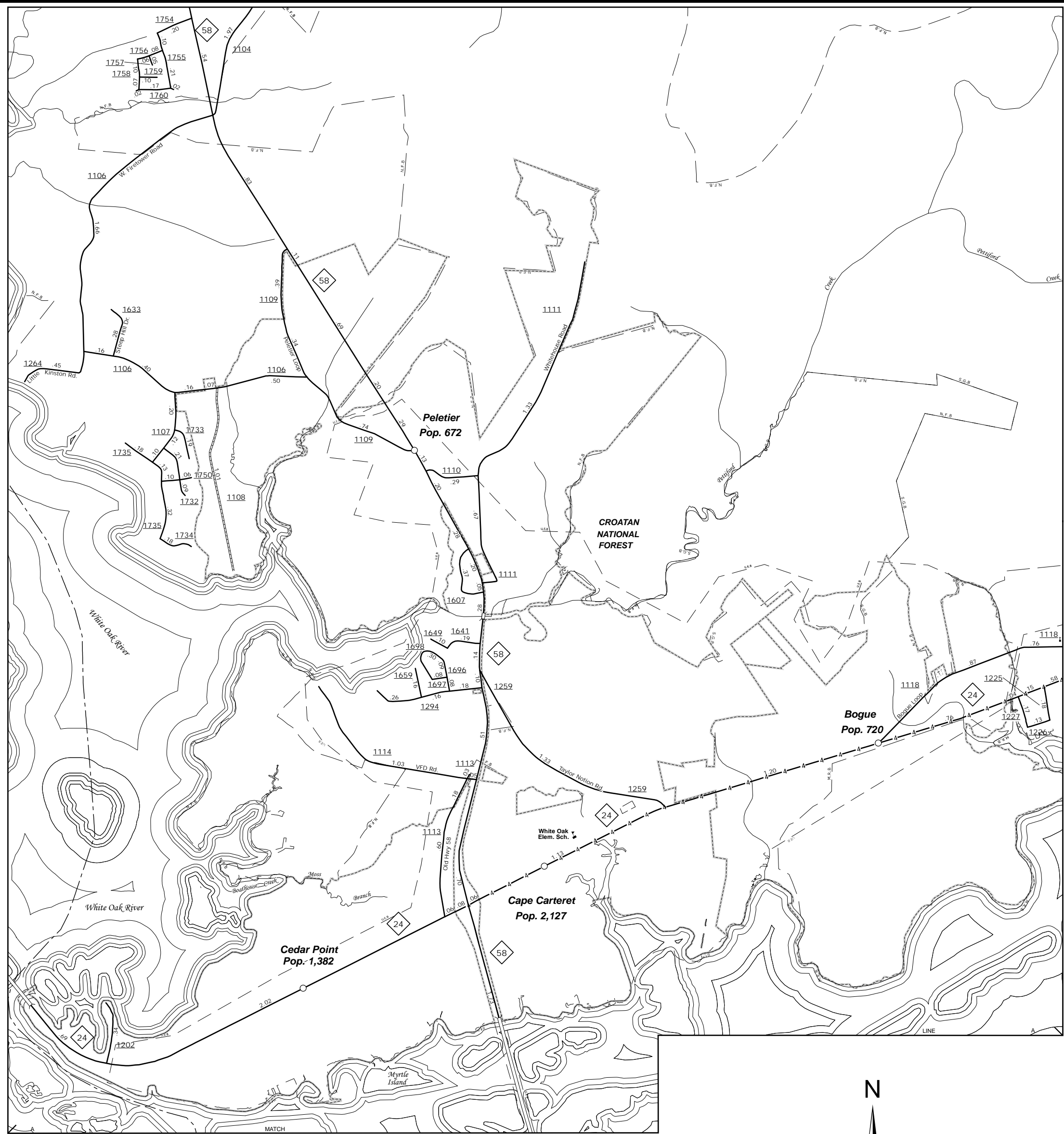
COPIES OF THIS MAP ARE AVAILABLE
N.C. DEPARTMENT OF TRANSPORTATION
MS&U - MAPPING SECTION
4809 BERN LEO
CARRBORO, NC 27583



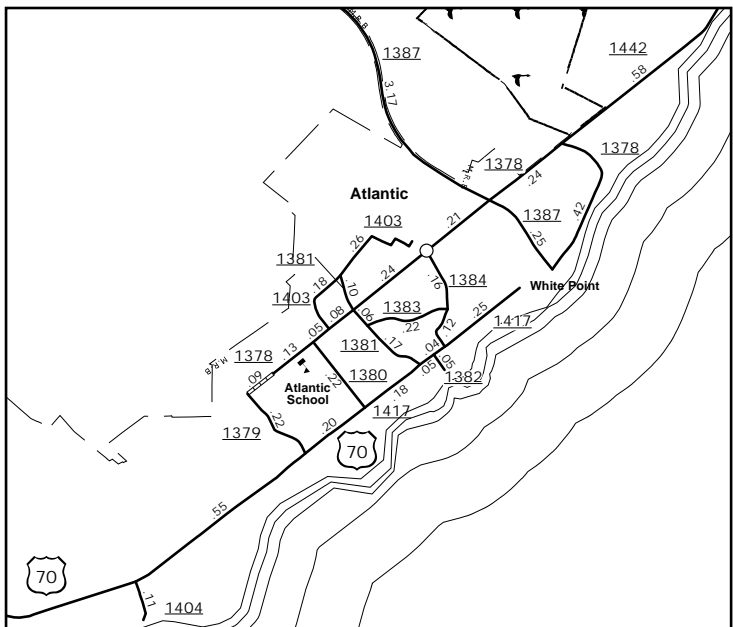
Newport



Indian Beach



Peletier



Atlantic

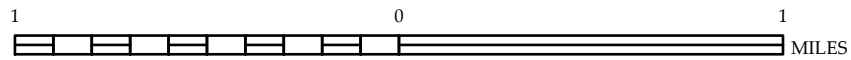


ENLARGED MUNICIPAL AND SUBURBAN AREAS

CARTERET COUNTY NORTH CAROLINA

PREPARED BY THE
NORTH CAROLINA DEPARTMENT OF TRANSPORTATION
MANAGEMENT SYSTEMS AND ASSESSMENTS UNIT - MAPPING SECTION
IN COOPERATION WITH THE
U.S. DEPARTMENT OF TRANSPORTATION
FEDERAL HIGHWAY ADMINISTRATION

SCALE



10,000 FOOT GRID BASED ON NORTH CAROLINA PLANE COORDINATE SYSTEM
LAMBERT CONFORMAL CONIC PROJECTION

SHEET 3 OF 4