

The MSAL's goal is to provide the most accurate and current information possible. Map data is compiled from numerous sources including aerial photography, ground surveys, and other data. As a result, there may be differences between the map and the actual ground conditions. The MSAL is not responsible for any errors or omissions. For additional information, visit <http://www.ncdot.gov/transportation/MSAL>, and click on Data Providers or contact us at (819) 835-8480.

COPIES OF THIS MAP ARE AVAILABLE  
FOR PURCHASE AT A PUBLIC UTILITY COST.  
ADDRESS: N.C. DEPARTMENT OF TRANSPORTATION  
MSAL - MAPPING SECTION  
4809 BERT RD.  
Raleigh, NC 27609



Concord, Harrisburg and Vicinity

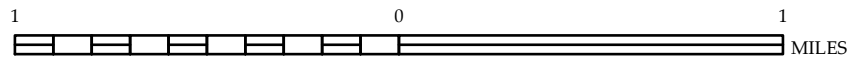


ENLARGED MUNICIPAL AND SUBURBAN AREAS

## CABARRUS COUNTY NORTH CAROLINA

PREPARED BY THE  
NORTH CAROLINA DEPARTMENT OF TRANSPORTATION  
MANAGEMENT SYSTEMS AND ASSESSMENTS UNIT - MAPPING SECTION  
IN COOPERATION WITH THE  
U.S. DEPARTMENT OF TRANSPORTATION  
FEDERAL HIGHWAY ADMINISTRATION

SCALE



10,000 FOOT GRID BASED ON NORTH CAROLINA PLANE COORDINATE SYSTEM  
LAMBERT CONFORMAL CONIC PROJECTION

SHEET 4 OF 6