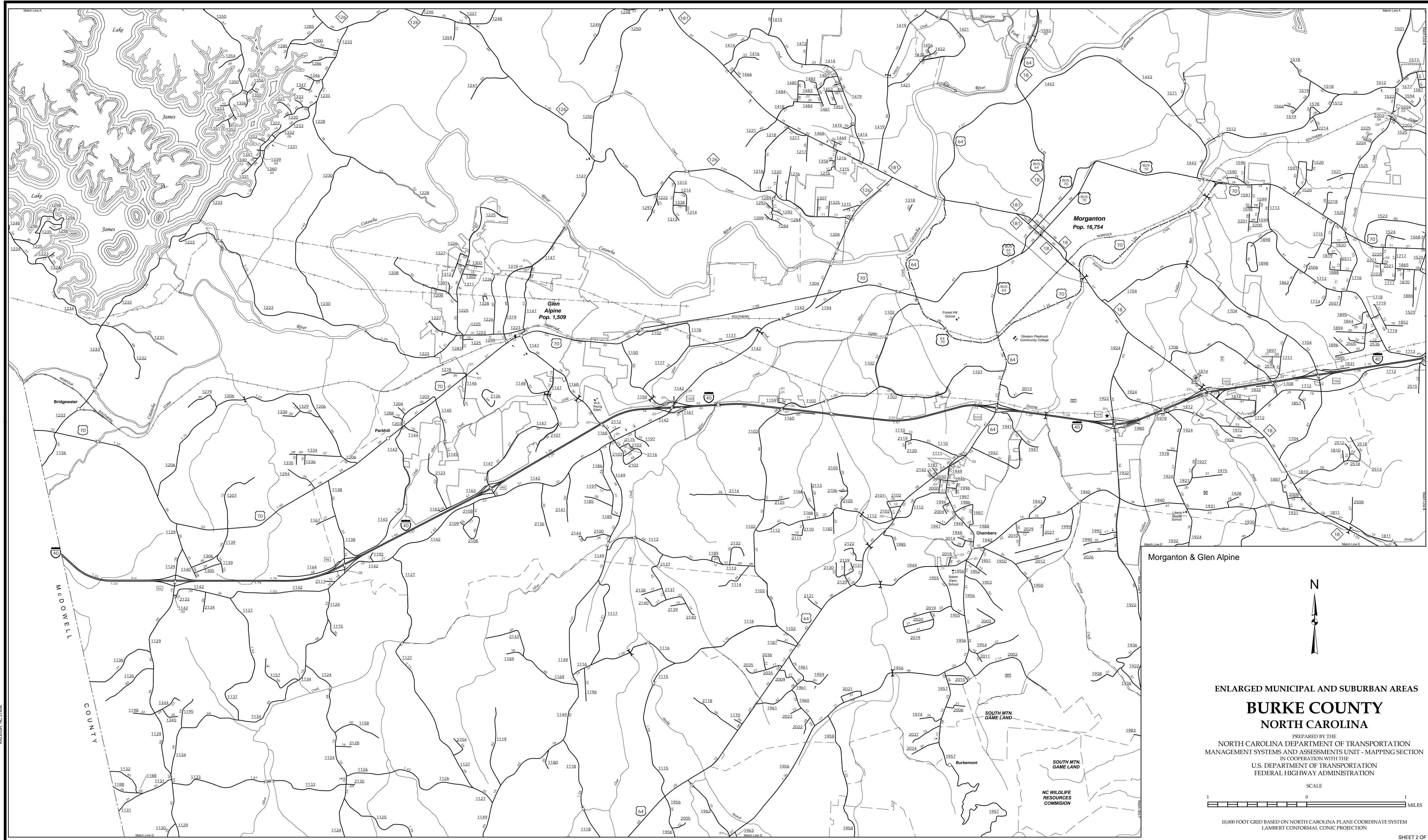


The MS&U's goal is to provide the most accurate and current information possible. Map data is compiled from numerous sources including aerial photography, ground surveys, and other data. As a result, roads and important non-system roads, and important non-system roads, may not be shown. For additional information, visit <http://www.ncdot.gov/transportation/MS&U/MS&U.asp>, and click on Data Providers or contact us at (819) 535-5460.

COPIES OF THIS MAP ARE AVAILABLE
FROM THE NORTH CAROLINA
ADDRESS
N.C. DEPARTMENT OF TRANSPORTATION
MS&U - MAPPING SECTION
4899 BERRY LANE
RALEIGH, NC 27609



Morganton & Glen Alpine

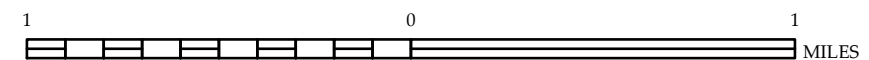


ENLARGED MUNICIPAL AND SUBURBAN AREAS

BURKE COUNTY NORTH CAROLINA

PREPARED BY THE
NORTH CAROLINA DEPARTMENT OF TRANSPORTATION
MANAGEMENT SYSTEMS AND ASSESSMENTS UNIT - MAPPING SECTION
IN COOPERATION WITH THE
U.S. DEPARTMENT OF TRANSPORTATION
FEDERAL HIGHWAY ADMINISTRATION

SCALE



10,000 FOOT GRID BASED ON NORTH CAROLINA PLANE COORDINATE SYSTEM
LAMBERT CONFORMAL CONIC PROJECTION

SHEET 2 OF 5