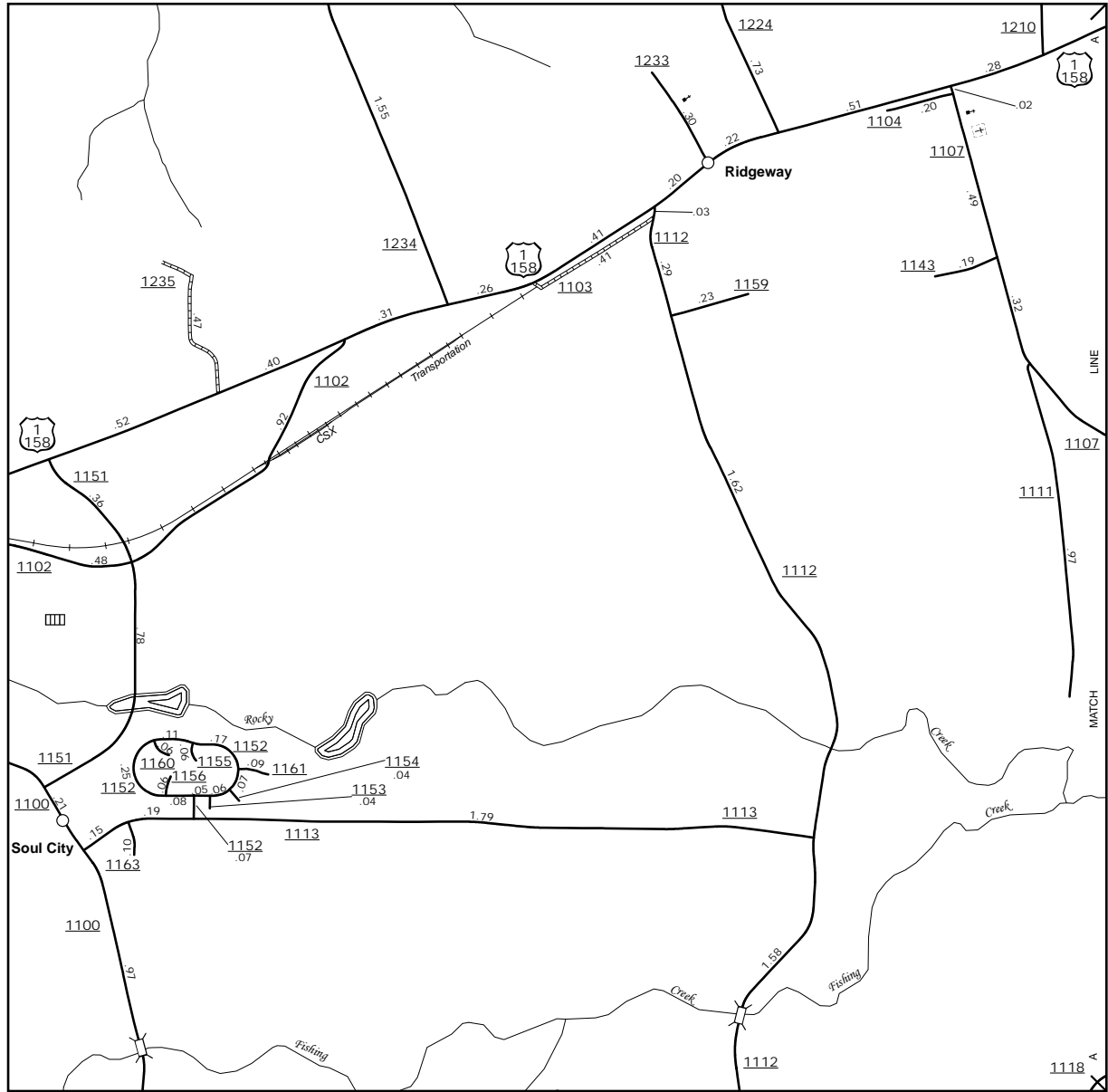


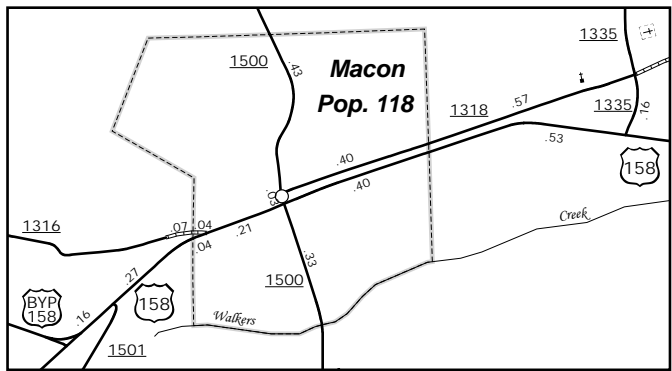
COPIES OF THIS MAP ARE AVAILABLE
TO THE PUBLIC AT NOMINAL COST.
N.C. DEPARTMENT OF TRANSPORTATION
ADDRESS: MAPS SECTION
4800 BERRY LANE
RALEIGH, NC 27606



Lake Gaston



Ridgeway



Macon

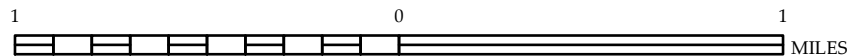


ENLARGED MUNICIPAL AND SUBURBAN AREAS

WARREN COUNTY NORTH CAROLINA

PREPARED BY THE
NORTH CAROLINA DEPARTMENT OF TRANSPORTATION
MANAGEMENT SYSTEMS AND ASSESSMENTS UNIT - MAPPING SECTION
IN COOPERATION WITH THE
U.S. DEPARTMENT OF TRANSPORTATION
FEDERAL HIGHWAY ADMINISTRATION

SCALE



10,000 FOOT GRID BASED ON NORTH CAROLINA PLANE COORDINATE SYSTEM
LAMBERT CONFORMAL CONIC PROJECTION

SHEET 2 OF 2