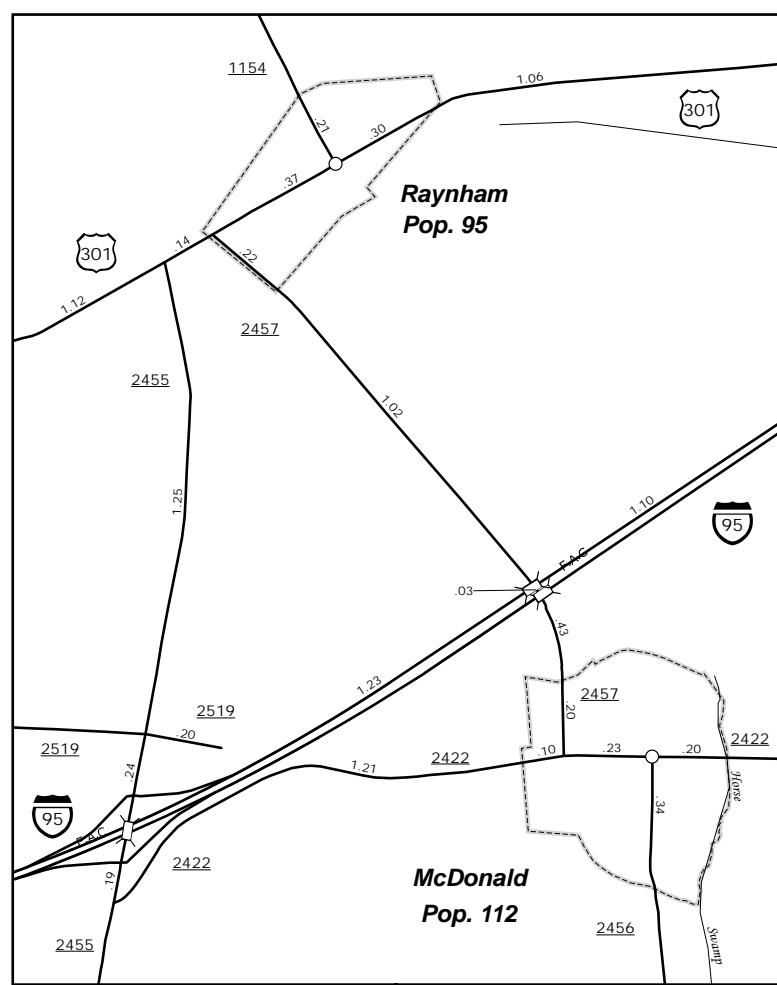
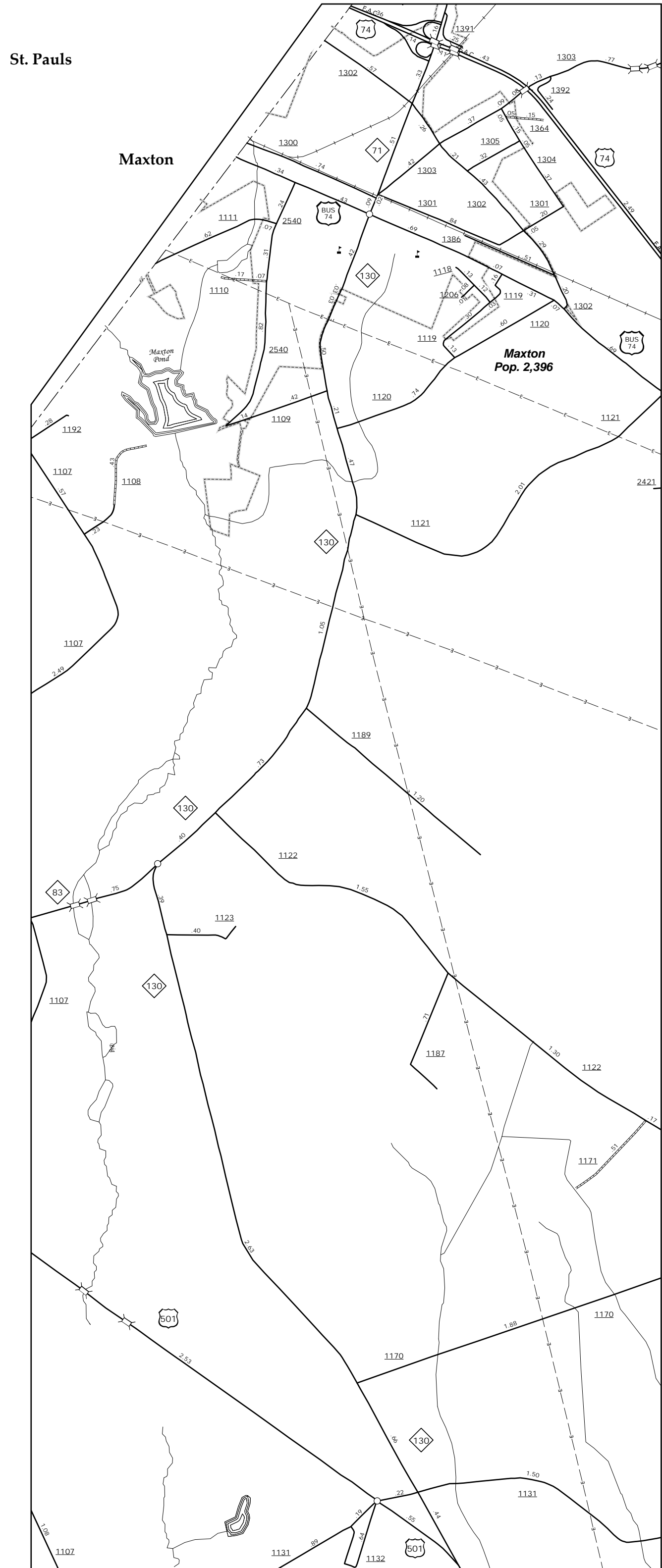


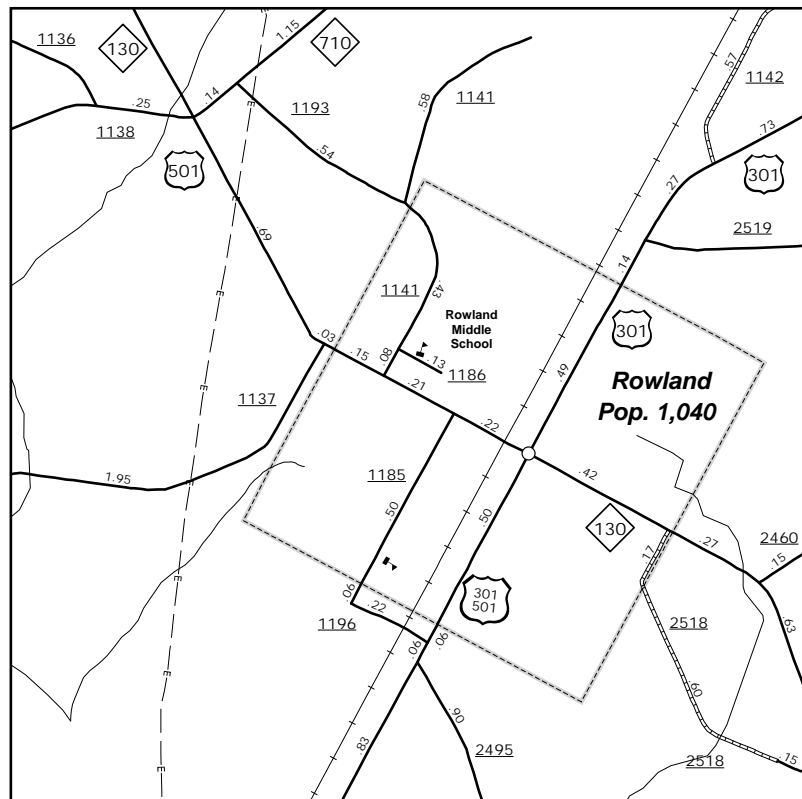
COPIES OF THIS MAP ARE AVAILABLE  
TO THE PUBLIC AT NOMINAL COST.  
ADDRESS: NORTH CAROLINA  
DEPARTMENT OF TRANSPORTATION  
MAPPING SECTION  
4809 BERNY RD.  
RALEIGH, NC 27606



St. Pauls



McDonald



Rowland

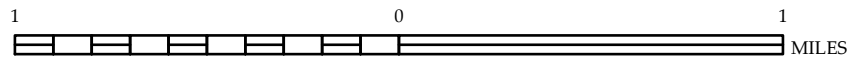


ENLARGED MUNICIPAL AND SUBURBAN AREAS

## ROBESON COUNTY NORTH CAROLINA

PREPARED BY THE  
NORTH CAROLINA DEPARTMENT OF TRANSPORTATION  
MANAGEMENT SYSTEMS AND ASSESSMENTS UNIT - MAPPING SECTION  
IN COOPERATION WITH THE  
U.S. DEPARTMENT OF TRANSPORTATION  
FEDERAL HIGHWAY ADMINISTRATION

SCALE



10,000 FOOT GRID BASED ON NORTH CAROLINA PLANE COORDINATE SYSTEM  
LAMBERT CONFORMAL CONIC PROJECTION

SHEET 4 OF 4