

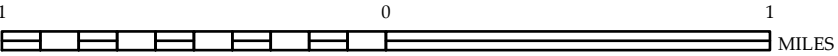
Dunn

ENLARGED MUNICIPAL AND SUBURBAN AREAS

# HARNETT COUNTY NORTH CAROLINA

PREPARED BY THE  
NORTH CAROLINA DEPARTMENT OF TRANSPORTATION  
MANAGEMENT SYSTEMS AND ASSESSMENTS UNIT - MAPPING SECTION  
IN COOPERATION WITH THE  
U.S. DEPARTMENT OF TRANSPORTATION  
FEDERAL HIGHWAY ADMINISTRATION

SCALE



10,000 FOOT GRID BASED ON NORTH CAROLINA PLANE COORDINATE SYSTEM  
LAMBERT CONFORMAL CONIC PROJECTION

SHEET 5 OF 6

COPIES OF THIS MAP ARE AVAILABLE  
TO THE PUBLIC AT NOMINAL COST.  
ADDRESS: N.C. DEPARTMENT OF TRANSPORTATION  
MSAU - MAPPING SECTION  
4809 BERRY LANE  
RALEIGH, NC 27605