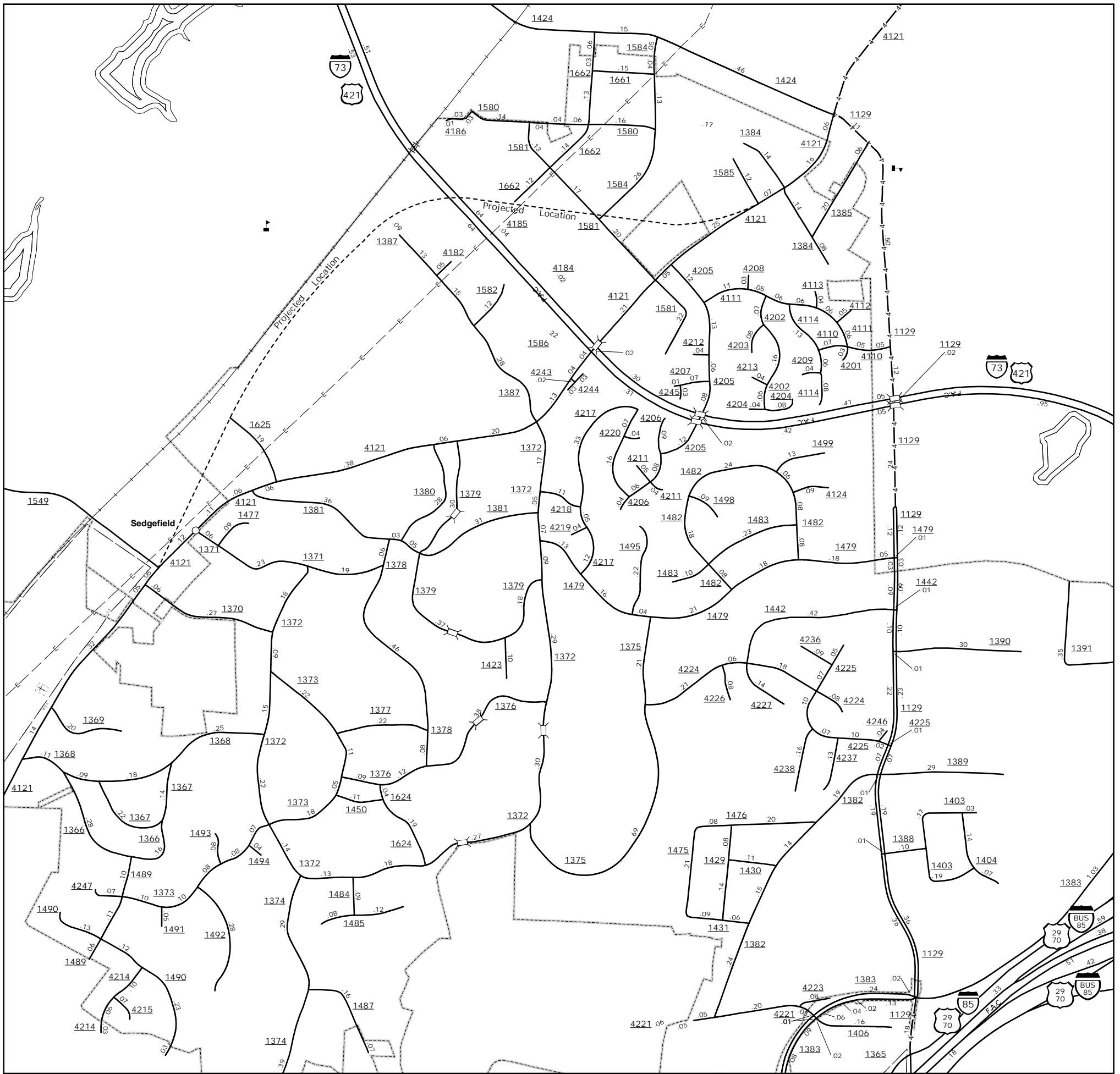
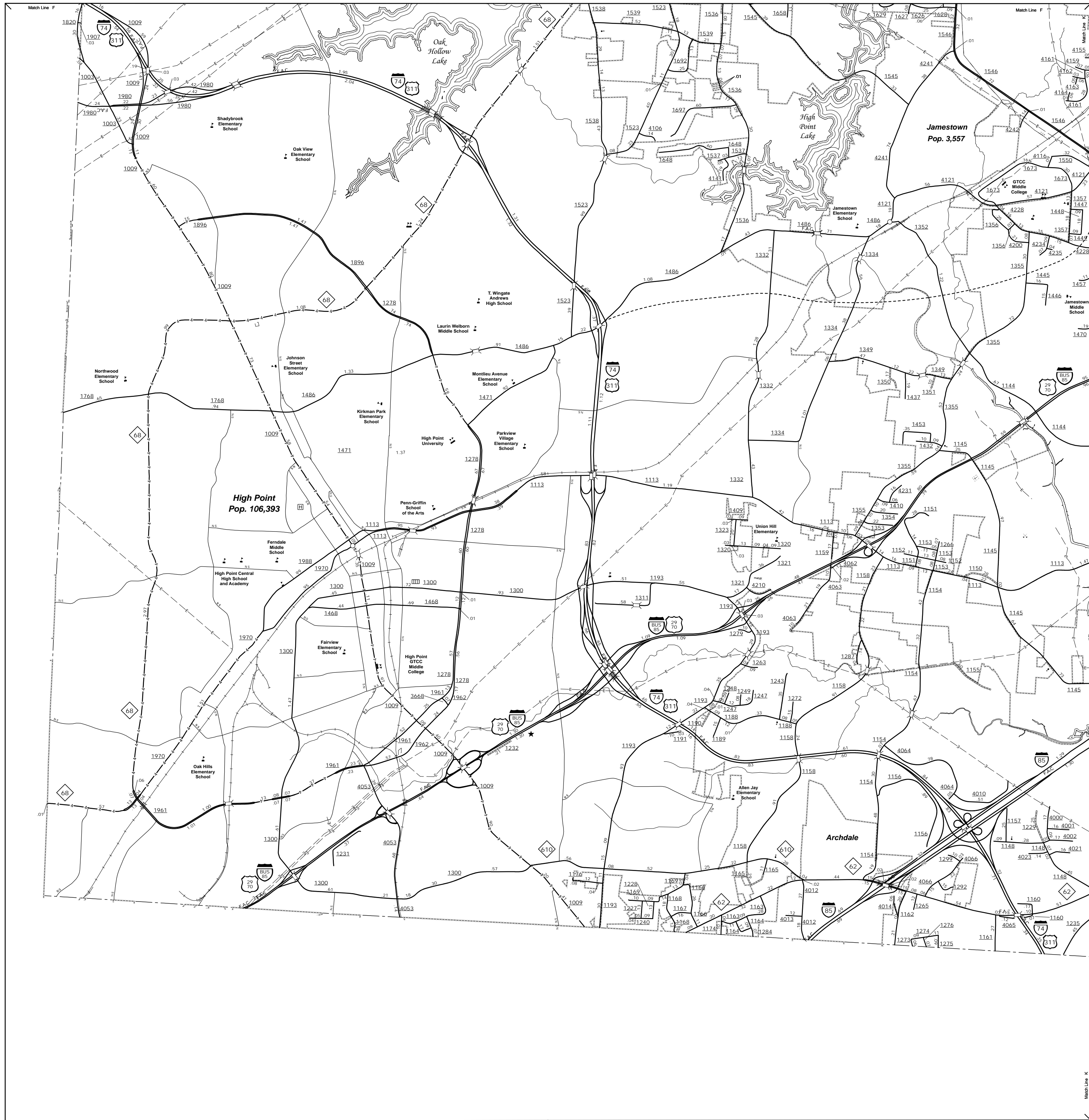


COPIES OF THIS MAP ARE AVAILABLE
TO THE PUBLIC AT NOMINAL COST
ADDRESS: NC DEPARTMENT OF TRANSPORTATION
MSAU-MAPPING SECTION
4809 BERT RD
RALEIGH, NC 27605



Sedgefield

High Point

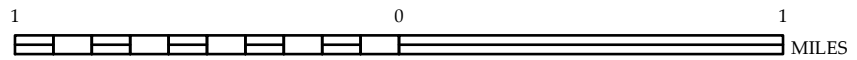


ENLARGED MUNICIPAL AND SUBURBAN AREAS

GUILFORD COUNTY NORTH CAROLINA

PREPARED BY THE
NORTH CAROLINA DEPARTMENT OF TRANSPORTATION
MANAGEMENT SYSTEMS AND ASSESSMENTS UNIT - MAPPING SECTION
IN COOPERATION WITH THE
U.S. DEPARTMENT OF TRANSPORTATION
FEDERAL HIGHWAY ADMINISTRATION

SCALE



10,000 FOOT GRID BASED ON NORTH CAROLINA PLANE COORDINATE SYSTEM
LAMBERT CONFORMAL CONIC PROJECTION