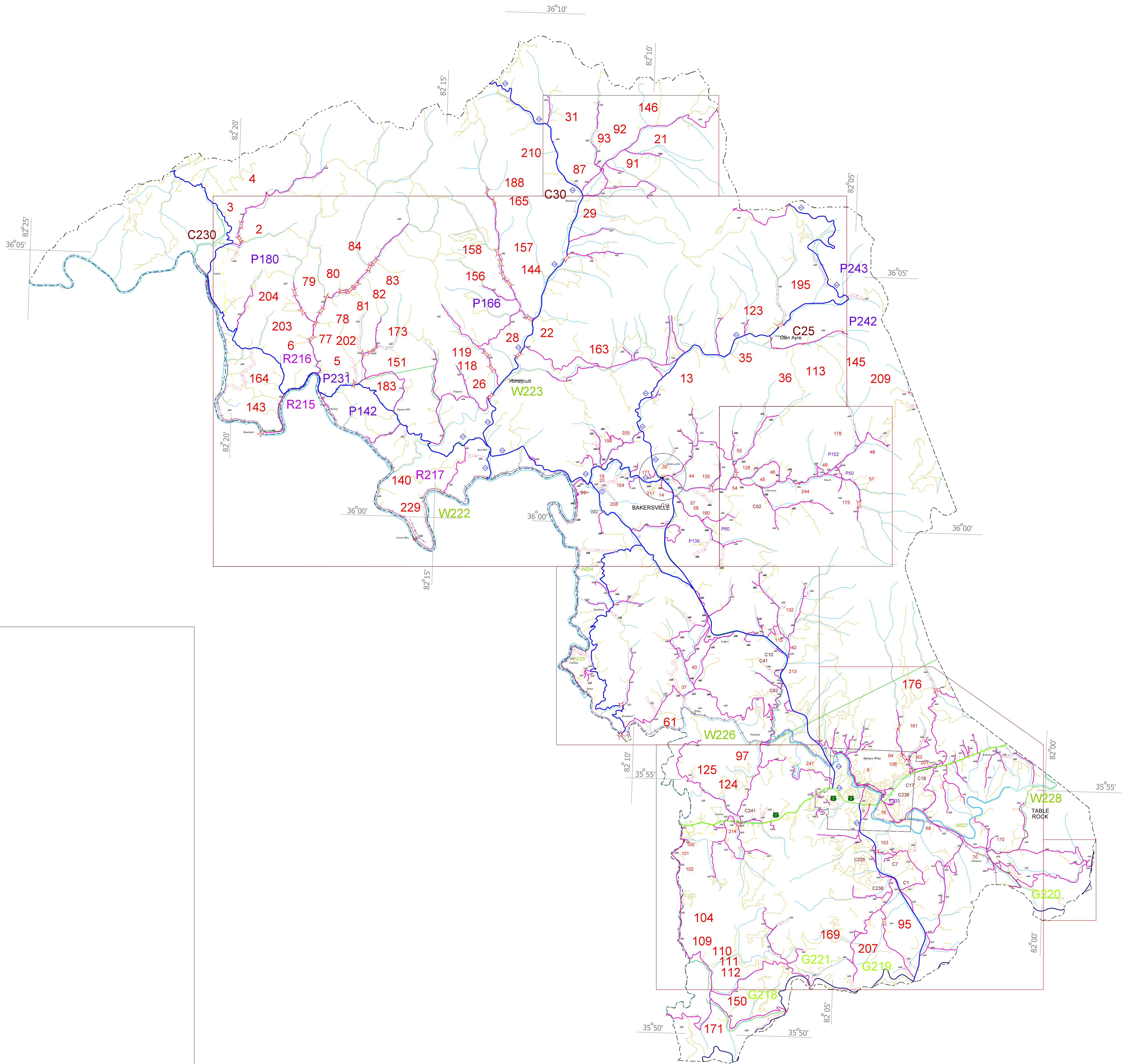
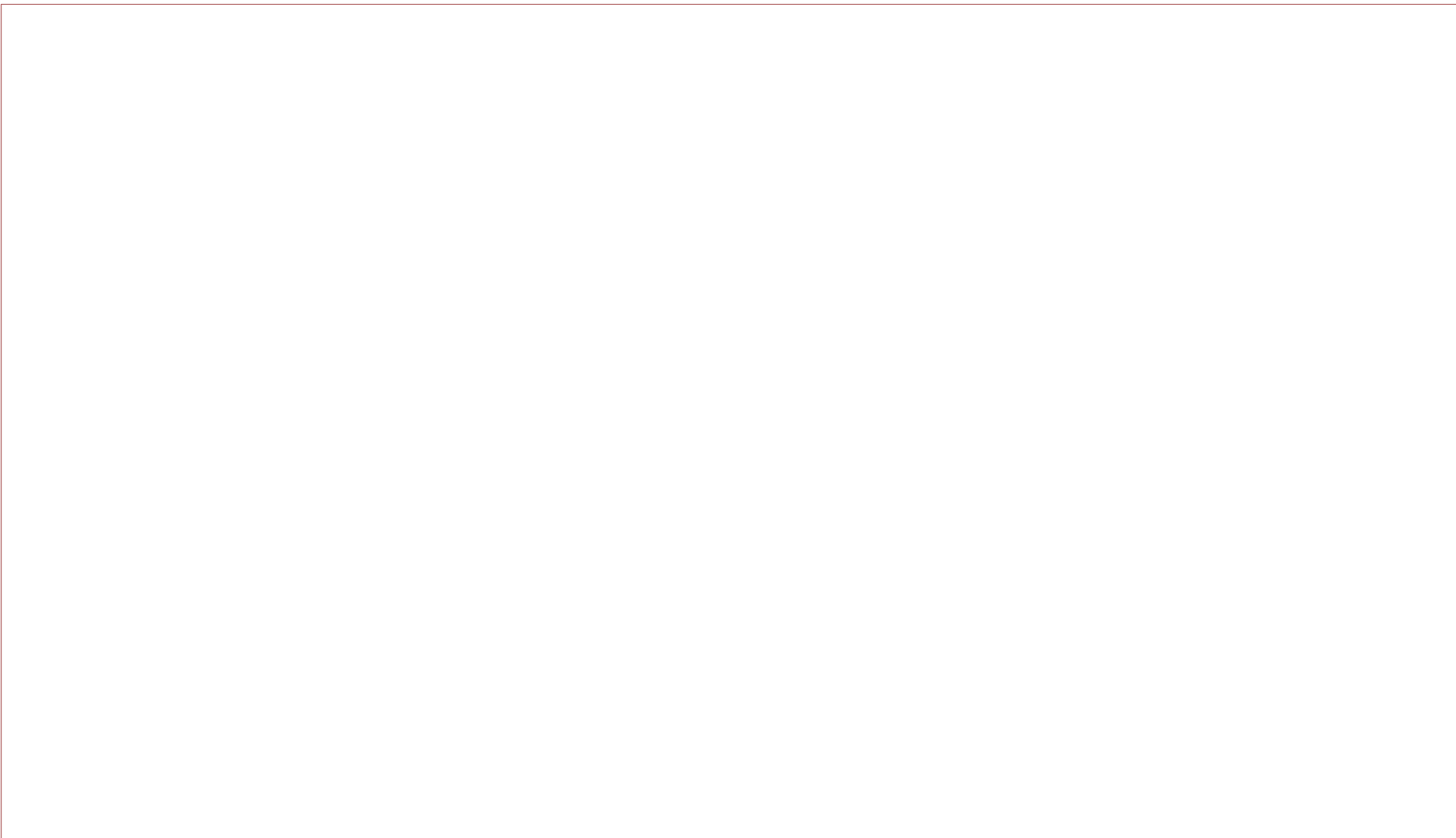


Disclaimer: The SRMU's goal is to provide the most accurate information as possible. The magnitude of the data prevents any guarantee of accuracy or completeness. If you find any information that is incorrect, please send your request to the SRMU Section.

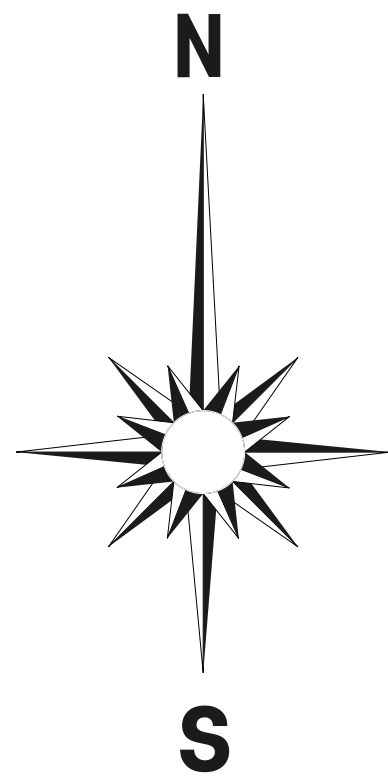
COPIES OF THIS MAP ARE AVAILABLE
TO THE PUBLIC AT A NOMINAL COST.
ADDRESS:
NORTH CAROLINA DEPARTMENT OF TRANSPORTATION
STATE ROAD MANAGEMENT UNIT
340 CARL SANDERBURG CT.
FALLS CHURCH, NC 27616

MITCHELL



LEGEND

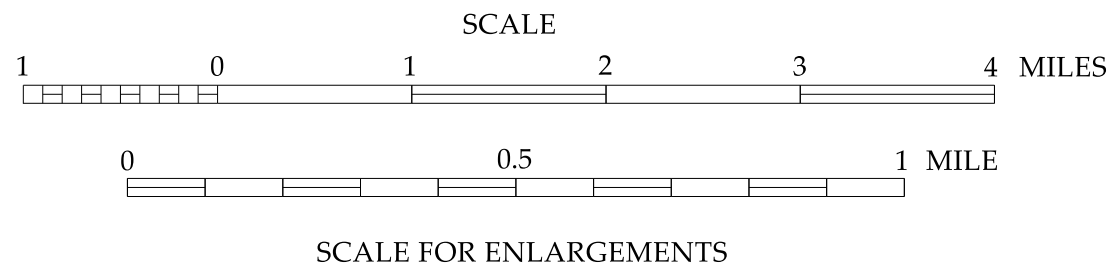
- PRIMITIVE OR UNIMPROVED ROAD
- GRADED AND DRAINED ROAD
- SOIL GRATEL OR STONE SURFACED ROAD
- HARD SURFACED ROAD
- 4 LANE UNDIVIDED HIGHWAY
- DIVIDED HIGHWAY W/ FRONTAGE ROADS
- FULL CONTROL ACCESS
- NON-SYSTEM ROAD
- PROJECTED LOCATION
- INTERCHANGE DISTANCE
- TRAFFIC CIRCLE
- DETAILED HIGHWAY INTERCHANGE
- DRAW SPAN ON BRIDGE
- HIGHWAY TUNNEL
- FORD
- INTERSTATE HIGHWAY
- U.S. NUMBERED HIGHWAY
- N.C. NUMBERED HIGHWAY
- U.S. NUMBERED BICYCLE ROUTE
- N.C. NUMBERED BICYCLE ROUTE
- INTERSTATE INTERCHANGE NUMBER
- SECONDARY ROAD NUMBER
- RAILROAD ANY NUMBER OF TRACKS
USED BY SINGLE OPERATING COMPANY
- RAILROAD ANY NUMBER OF TRACKS
USED BY MORE THAN ONE OPERATING
COMPANY SAME OR ADJACENT
RIGHTS-OF-WAY
- RAILROAD STATION
- RAILROAD TUNNEL
- UNDERPASS
- OVERPASS
- INSET AREA
- URBAN EXTENSION LINE
- FEDERAL OWNED OR OPERATED BOUNDARY
- RESERVATION OR PARK BOUNDARY
- STATE OWNED OR OPERATED BOUNDARY
- STATE LINE
- COUNTY LINE
- CITY LIMIT
- FERRY ROUTE
- CANAL
- NARROW CREEK OR STREAM
- WIDE RIVER OR CREEK
- RESERVOIR, POND, OR LAKE W/ ISLAND
- DAM OR DAM WITH LOCK
- WATERFALL
- SWAMP
- COMMUNITY TOWN OR CITY CENTER
- COUNTY SEAT
- SCHOOL
- COLLEGE OR UNIVERSITY
- HOSPITAL
- CHURCH
- CHURCH WITH CEMETERY
- CEMETERY
- PATROL STATION
- CORRECTIONAL OR PENAL INSTN.
- QUARRY
- MINE OR PIT
- HIGHWAY GARAGE OR MAINT. YARD
- HIGHWAY DIV. OR DIST. OFFICE
- WEIGHT STATION
- MONUMENT-SMALL HISTORICAL SITE
- LIGHTHOUSE
- MOUNTAIN GAP
- MOUNTAIN SUMMIT
- GEODETIC MARKER
- REST AREA
- AIRPORT
- MILITARY AIRFIELD
- COMMERCIAL OR MUNICIPAL FIELD
- HANGAR ON FIELD
- LANDING STRIP
- MARKED AUXILIARY FIELD



MITCHELL COUNTY

NORTH CAROLINA

PREPARED BY THE
NORTH CAROLINA DEPARTMENT OF TRANSPORTATION
STATE ROAD MANAGEMENT UNIT - MAPPING SECTION
IN COOPERATION WITH THE
U. S. DEPARTMENT OF TRANSPORTATION
FEDERAL HIGHWAY ADMINISTRATION



SCALE FOR ENLARGEMENTS
10,000 FOOT GRID BASED ON NORTH CAROLINA STATE PLANE COORDINATE SYSTEM
NAD 83 FEET
LAMBERT CONFORMAL CONIC

COUNTY BOUNDARY ALIGNMENTS ARE BASED ON
INFORMATION PROVIDED BY STATE AND FEDERAL
AGENCIES, AND ARE SHOWN IN THEIR APPROXIMATE
LOCATIONS.

NOTE : MAP INCLUDES ONLY STATE MAINTAINED ROADS
OR IMPORTANT NON-SYSTEM ROADS.
MILEAGE NOT SHOWN ON FRONTAGE ROADS.
ROADS SHOWN AS OF