

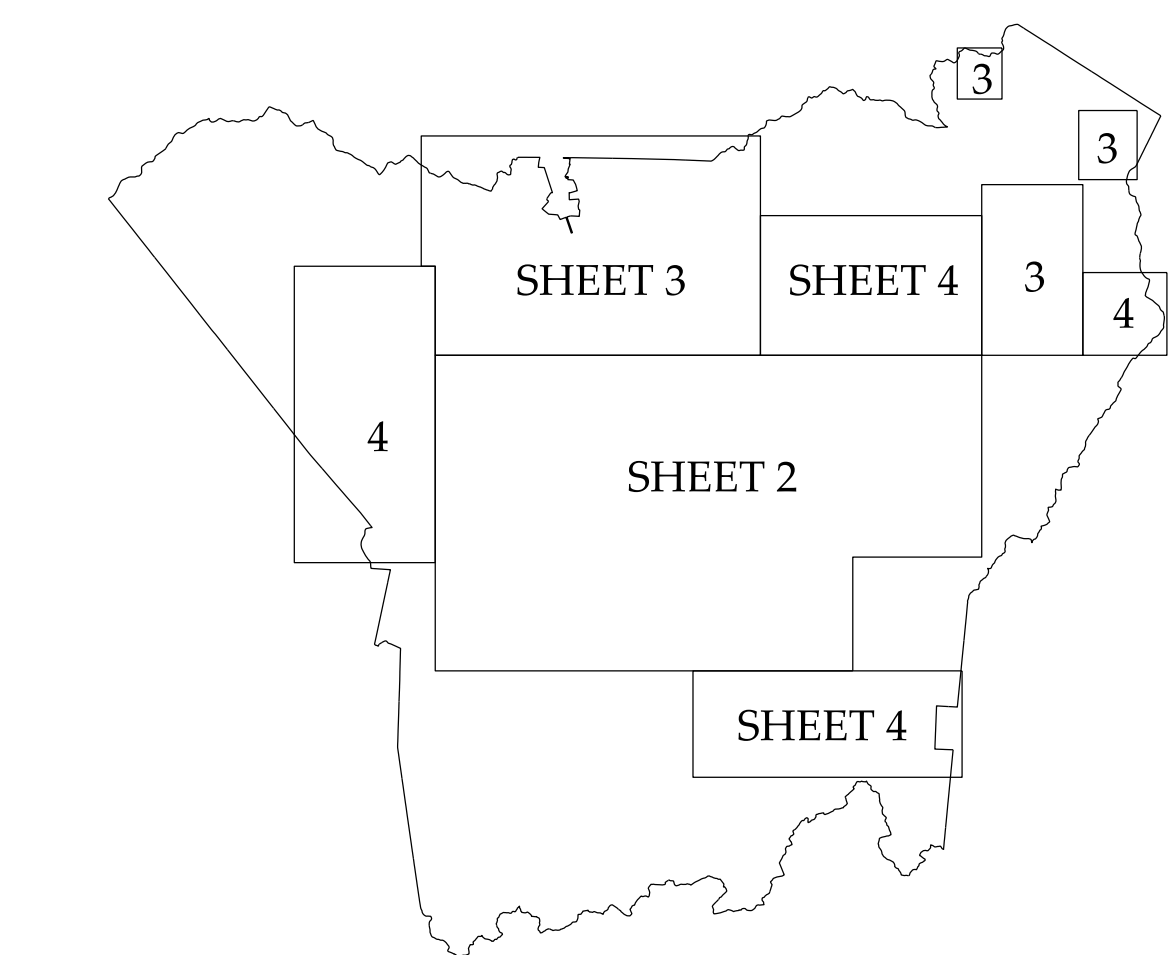
Disclaimer: The SRMU's goal is to provide the most accurate information as possible. The magnitude of the data prevents any guarantee of accuracy or completeness. If you find any information that is incorrect, please send your request to the SRMU Section.

COWS OF THIS MAP ARE AVAILABLE TO THE PUBLIC AT A NOMINAL COST.
ADDRESS: N.C. DEPARTMENT OF TRANSPORTATION
STATE ROAD MANAGEMENT UNIT
RALEIGH, N.C. 27606

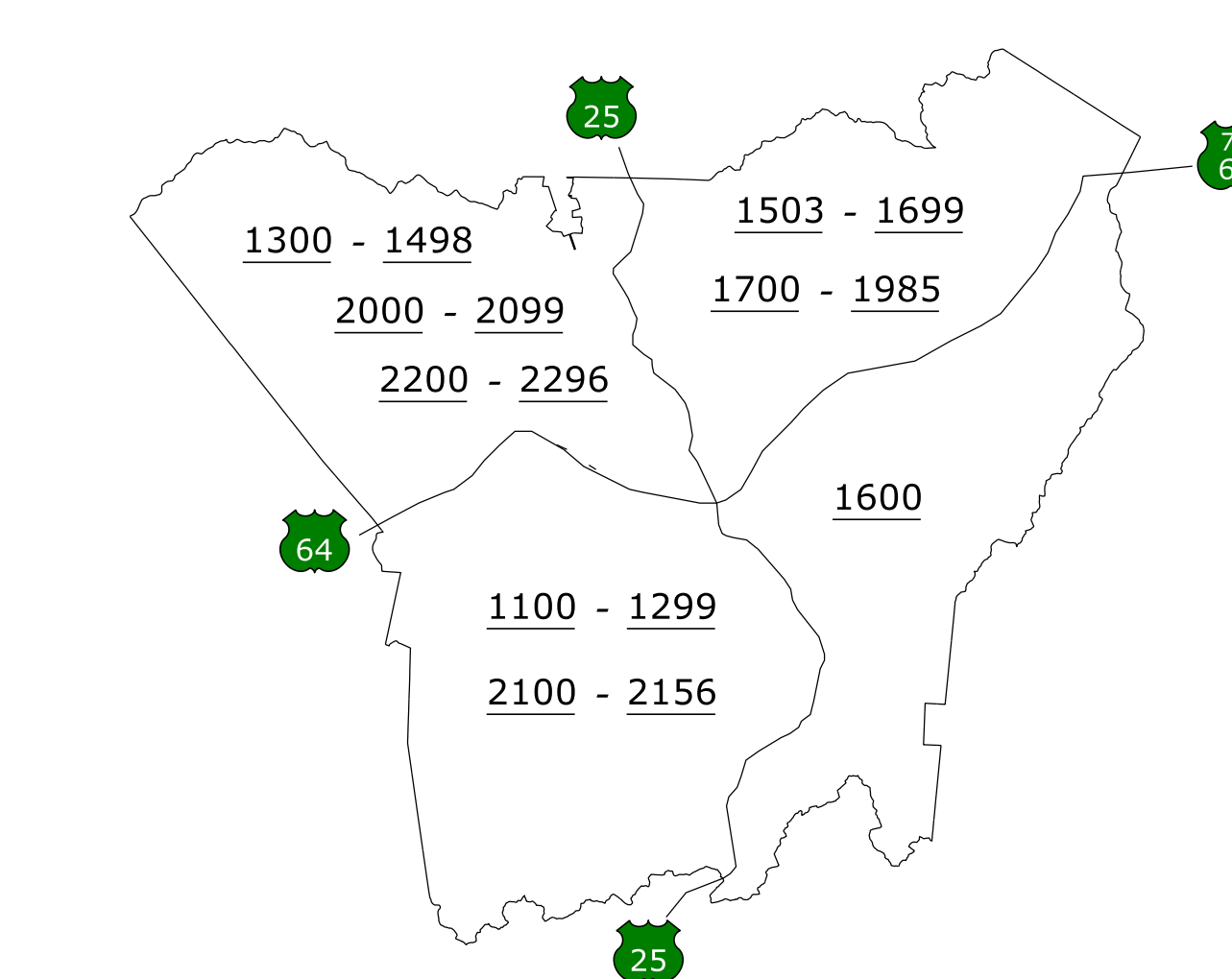
HENDERSON

NORTHAMPTON
COUNTY

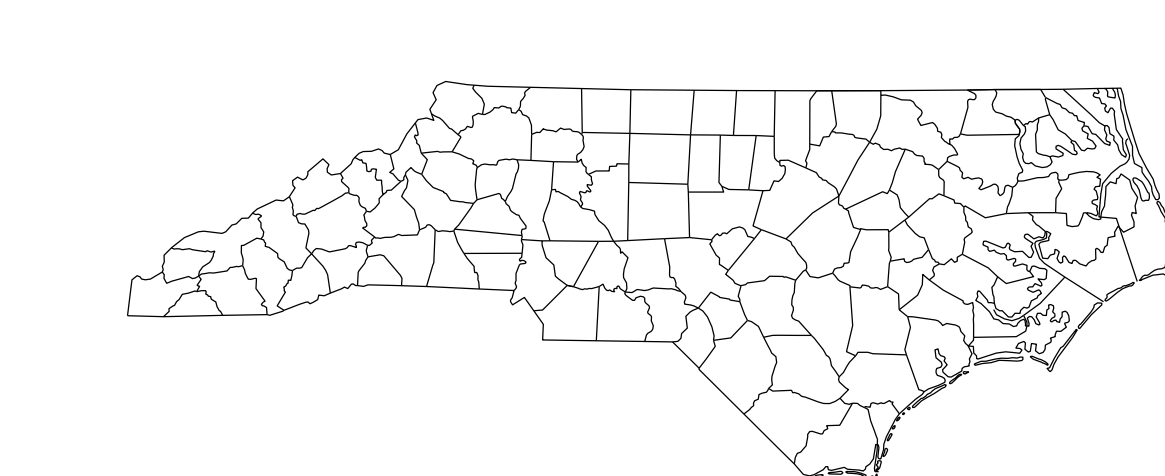
TO WASHINGTON



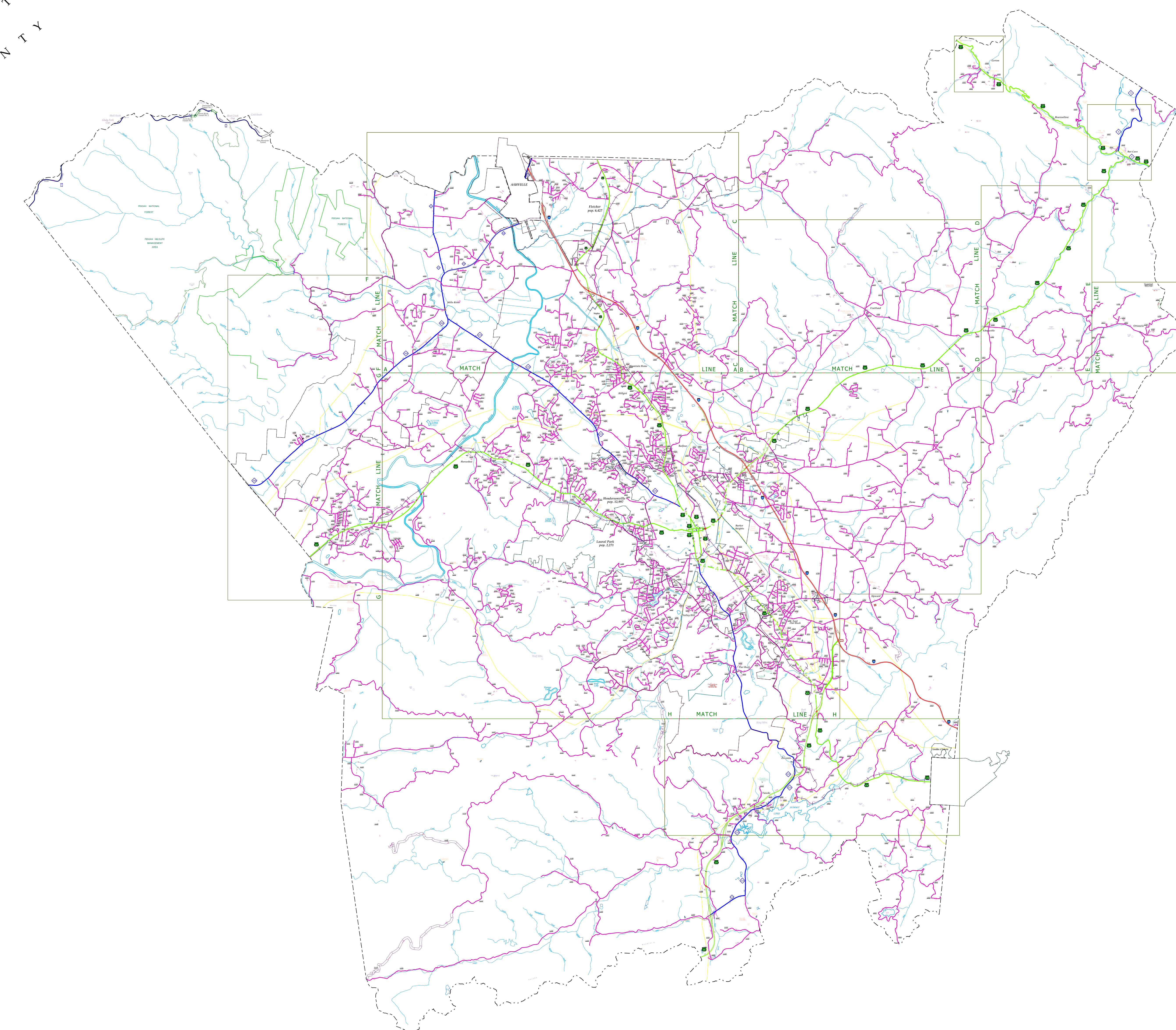
SUPPLEMENT SHEET KEY



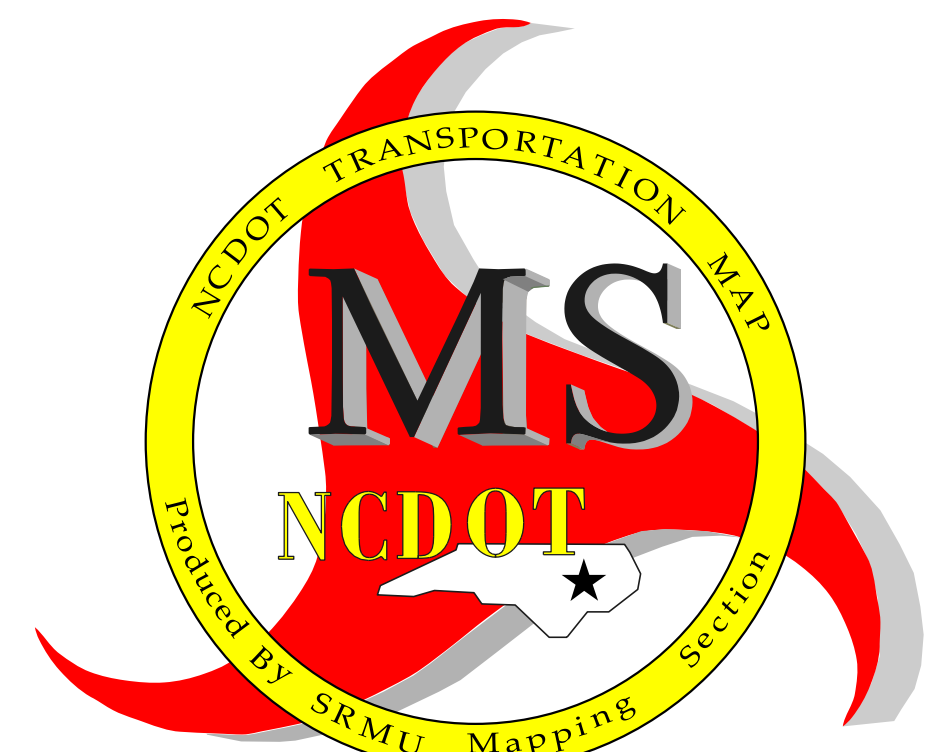
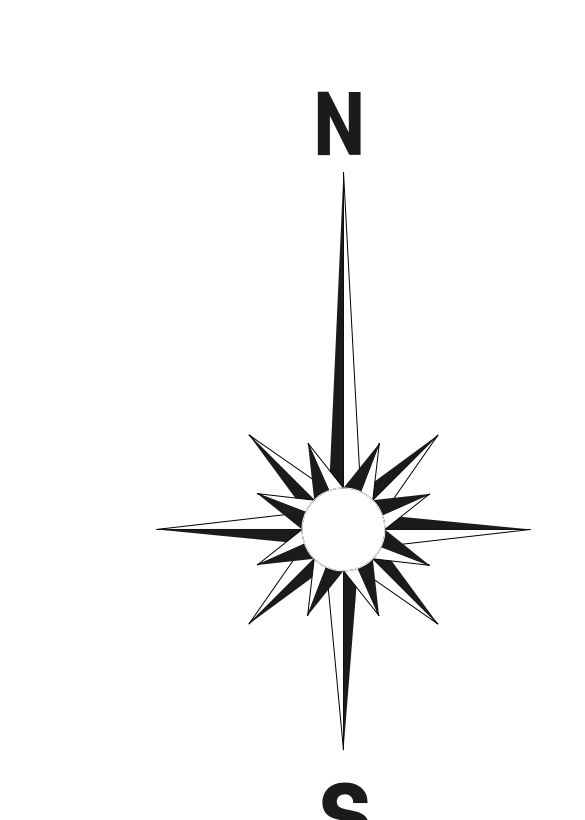
KEY TO COUNTY ROAD NUMBERS



NOTE : MAP INCLUDES ONLY STATE MAINTAINED ROADS
OR IMPORTANT NON-SYSTEM ROADS.
MILEAGE NOT SHOWN ON FRONTAGE ROADS.
ROADS SHOWN AS OF



- LEGEND
- PRIMITIVE OR UNIMPROVED ROAD
 - GRADED AND DRAINED ROAD
 - SOIL, GRAVEL, OR STONE SURFACED ROAD
 - HARD SURFACED ROAD
 - 4 LANE UNDIVIDED HIGHWAY
 - DIVIDED HIGHWAY W/ FRONTAGE ROADS
 - FULL CONTROL ACCESS
 - NON-SYSTEM ROAD
 - PROJECTED LOCATION
 - INTERCHANGE DISTANCE
 - TRAFFIC CIRCLE
 - DETAILED HIGHWAY INTERCHANGE
 - DRAW SPAN ON BRIDGE
 - HIGHWAY TUNNEL
 - FORD
 - INTERSTATE HIGHWAY
 - U.S. NUMBERED HIGHWAY
 - N.C. NUMBERED HIGHWAY
 - U.S. NUMBERED BICYCLE ROUTE
 - N.C. NUMBERED BICYCLE ROUTE
 - INTERSTATE INTERCHANGE NUMBER
 - SECONDARY ROAD NUMBER
 - RAILROAD, ANY NUMBER OF TRACKS
USED BY SINGLE OPERATING COMPANY
 - RAILROAD, ANY NUMBER OF TRACKS
USED BY MORE THAN ONE OPERATING
COMPANY OF SAME OR ADJACENT
RIGHTS-OF-WAY
 - RAILROAD STATION
 - GRADE CROSSING
 - RAILROAD TUNNEL
 - UNDERPASS
 - OVERPASS
 - INSET AREA
 - URBAN EXTENSION LINE
 - FEDERAL OWNED OR OPERATED BOUNDARY
 - RESERVATION OR PARK BOUNDARY
 - STATE OWNED OR OPERATED BOUNDARY
 - STATE LINE
 - COUNTY LINE
 - CITY LIMIT
 - FERRY ROUTE
 - CANAL
 - NARROW CREEK OR STREAM
 - WIDE RIVER OR CREEK
 - RESERVOIR/POND OR LAKE W/ ISLAND
 - DAM OR DAM WITH LOCK
 - WATERFALL
 - SWAMP
 - COMMUNITY TOWN OR CITY CENTER
 - COUNTY SEAT
 - SCHOOL
 - COLLEGE OR UNIVERSITY
 - HOSPITAL
 - CHURCH
 - CHURCH WITH CEMETERY
 - CEMETERY
 - PATROL STATION
 - CORRECTIONAL OR PENAL INSTN.
 - QUARRY
 - MINE OR PIT
 - HIGHWAY GARAGE OR MAINT. YARD
 - HIGHWAY TRUCK OR DIST. OFFICE
 - WRIGHT STATION
 - MONUMENT-SMALL HISTORICAL SITE
 - LIGHTHOUSE
 - MOUNTAIN GAP
 - MOUNTAIN SUMMIT
 - GEODETIC MARKER
 - REST AREA
 - RAILROAD STATION
 - MILITARY AIRFIELD
 - COMMERCIAL OR MUNICIPAL FIELD
 - HANGAR ON FIELD
 - LANDING STRIP
 - MARKED AUXILIARY FIELD



HENDERSON COUNTY

NORTH CAROLINA

PREPARED BY THE
NORTH CAROLINA DEPARTMENT OF TRANSPORTATION
STATE ROAD MANAGEMENT UNIT - MAPPING SECTION
IN COOPERATION WITH THE
U. S. DEPARTMENT OF TRANSPORTATION
FEDERAL HIGHWAY ADMINISTRATION

