

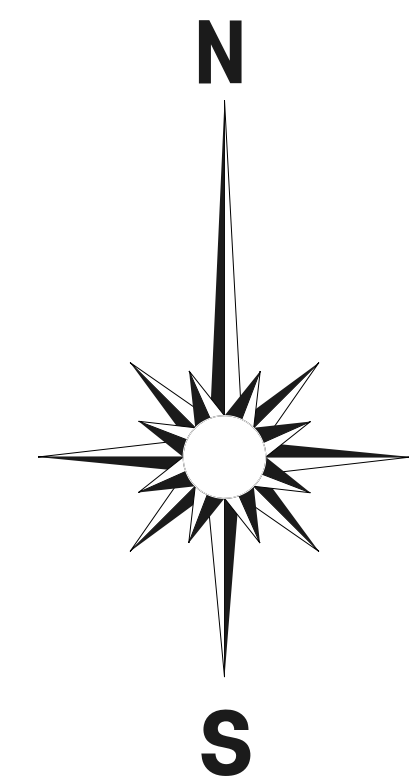
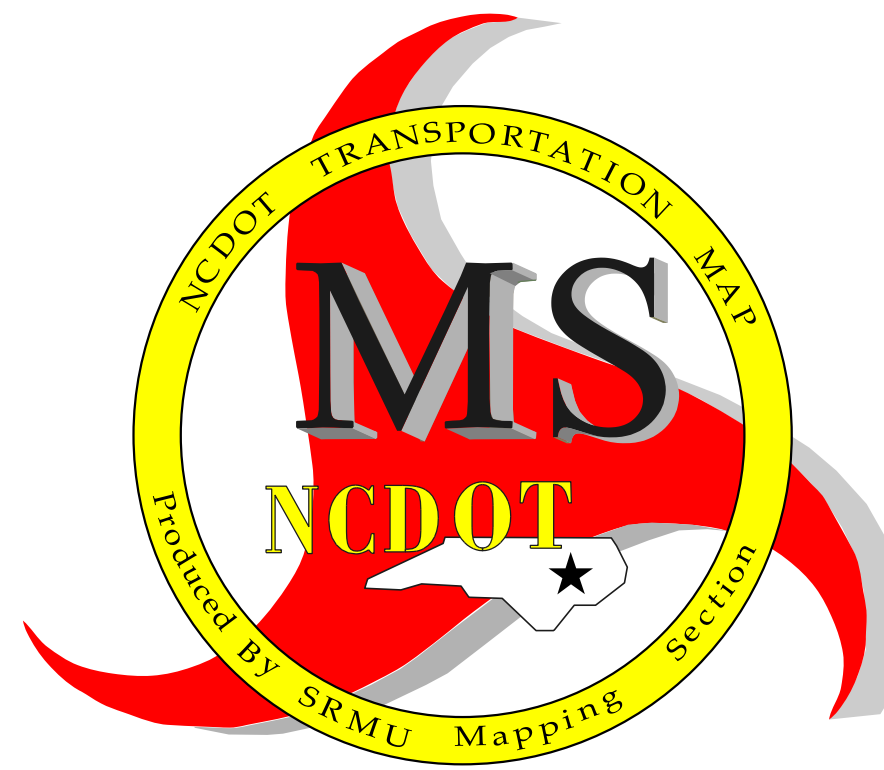
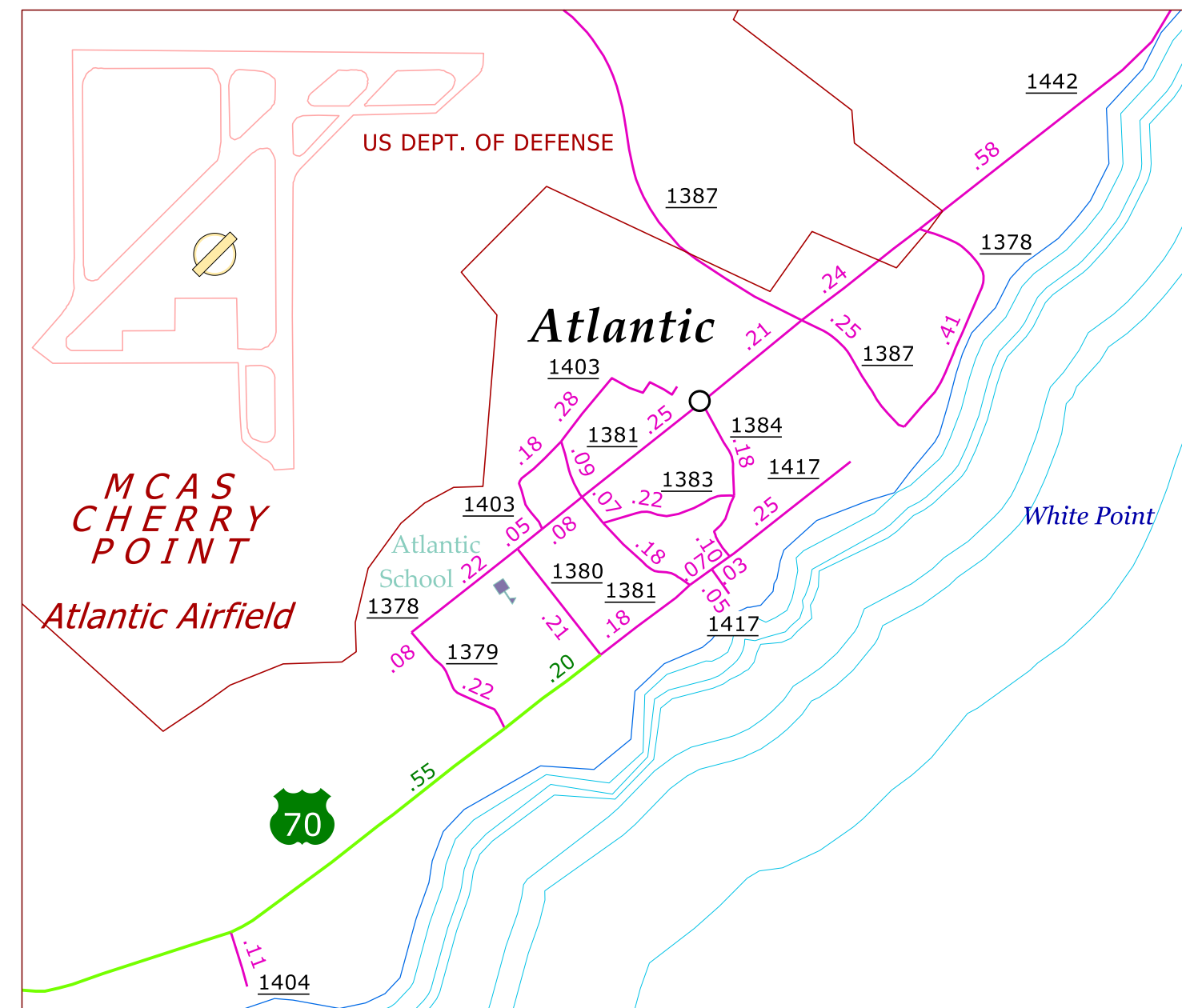
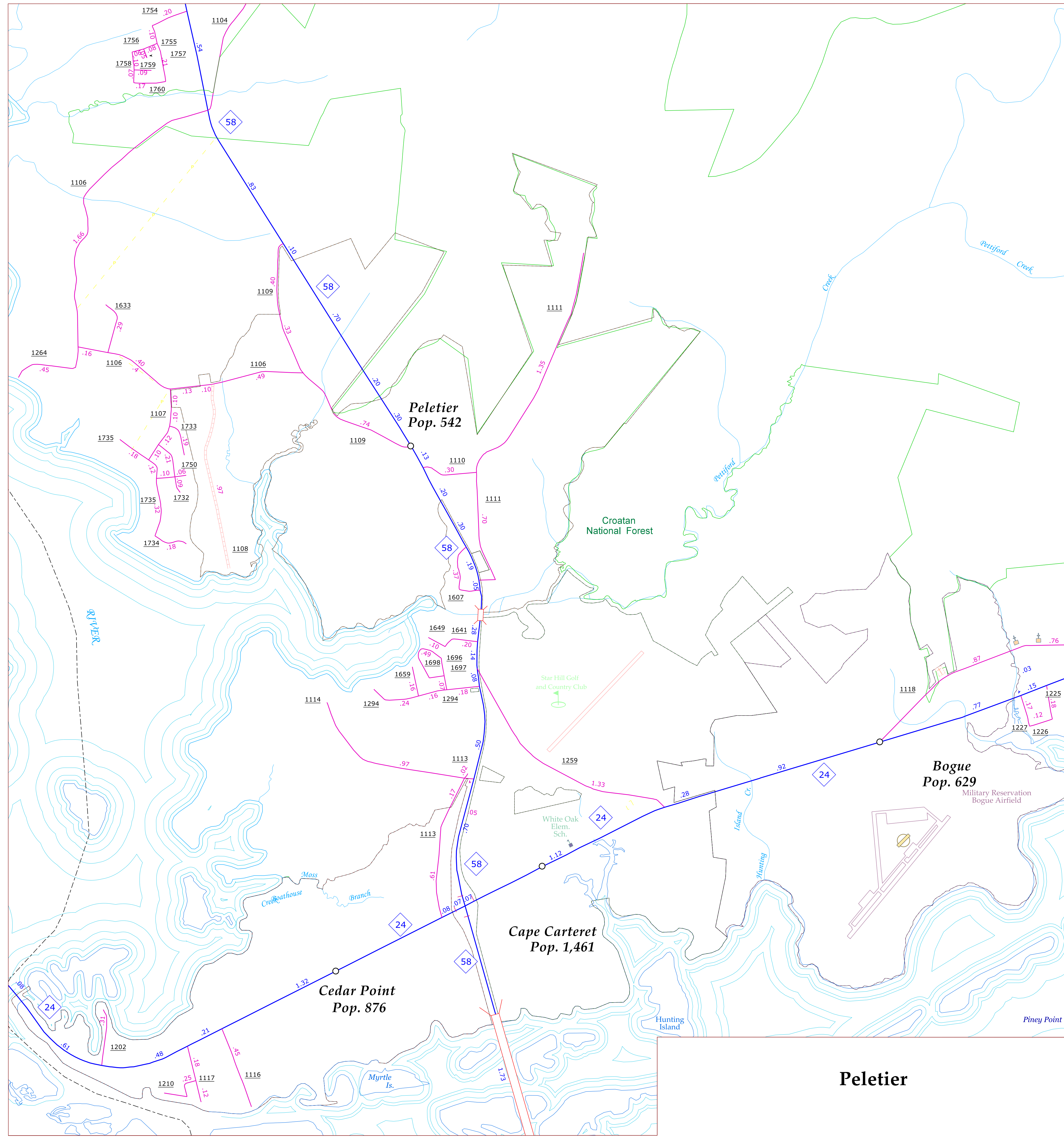
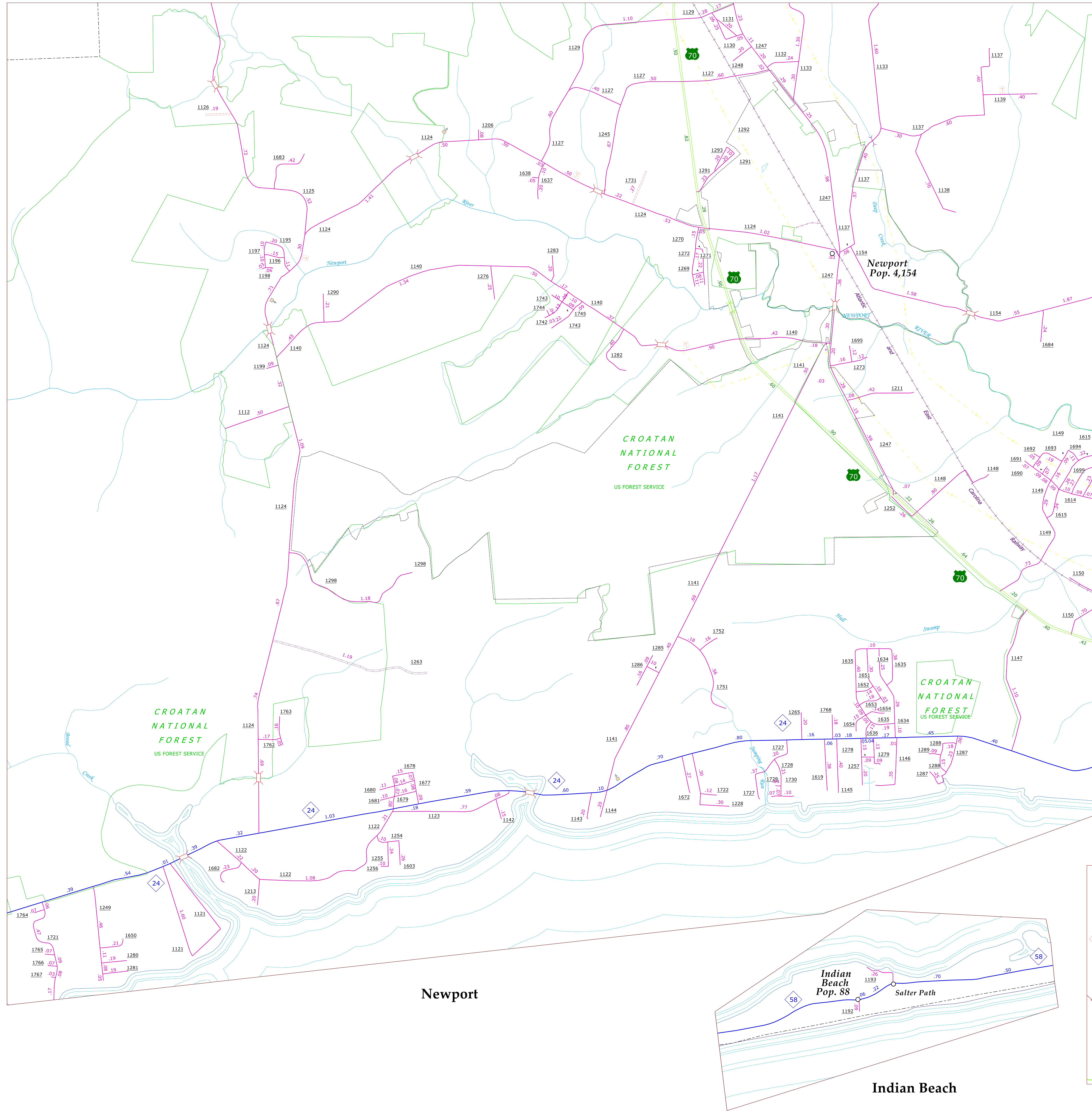
Disclaimer: The SRMU's goal is to provide the most accurate information as possible. The magnitude of the data prevents any guarantee of accuracy or completeness. If you find any information that is incorrect, please send your request to the SRMU Section.

COPIES OF THIS MAP ARE AVAILABLE TO THE PUBLIC AT A NOMINAL COST.

ADDRESS:  
N.C. DEPARTMENT OF TRANSPORTATION  
TRANSPORTATION PLANNING UNIT  
3001 CARR SANDBURG CT  
RALEIGH, NC 27601

SUP 2

CARTERET



ENLARGED MUNICIPAL AND SUBURBAN AREAS

# CARTERET COUNTY

NORTH CAROLINA

PREPARED BY THE  
NORTH CAROLINA DEPARTMENT OF TRANSPORTATION  
STATE ROAD MANAGEMENT UNIT - MAPPING SECTION  
IN COOPERATION WITH THE  
U.S. DEPARTMENT OF TRANSPORTATION  
FEDERAL HIGHWAY ADMINISTRATION

SCALE  
10,000 FOOT GRID BASED ON NORTH CAROLINA STATE PLANE COORDINATE SYSTEM  
NAD 83 FEET  
LAMBERT CONFORMAL CONIC