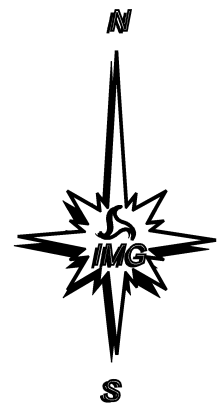
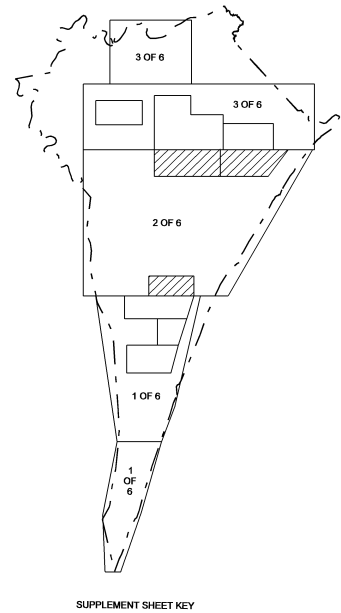
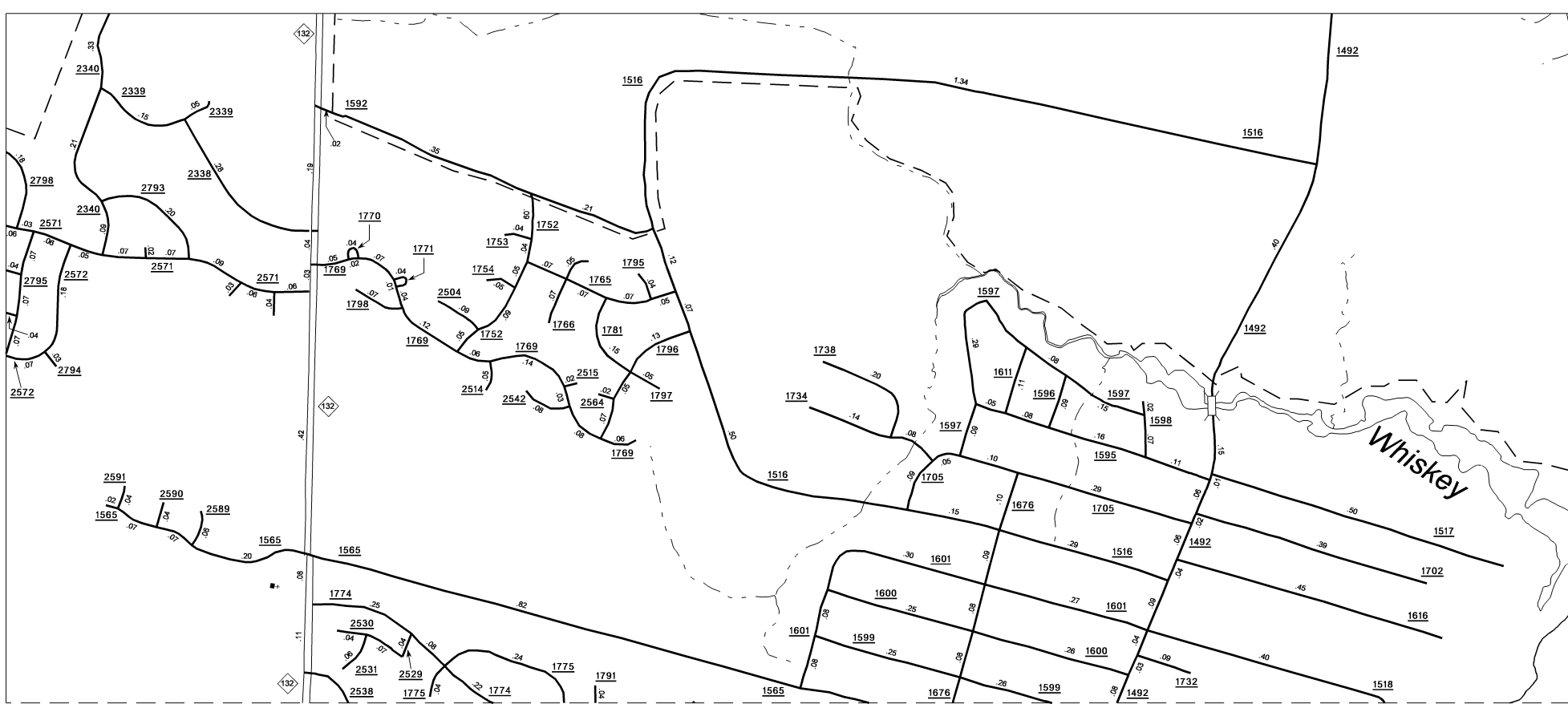
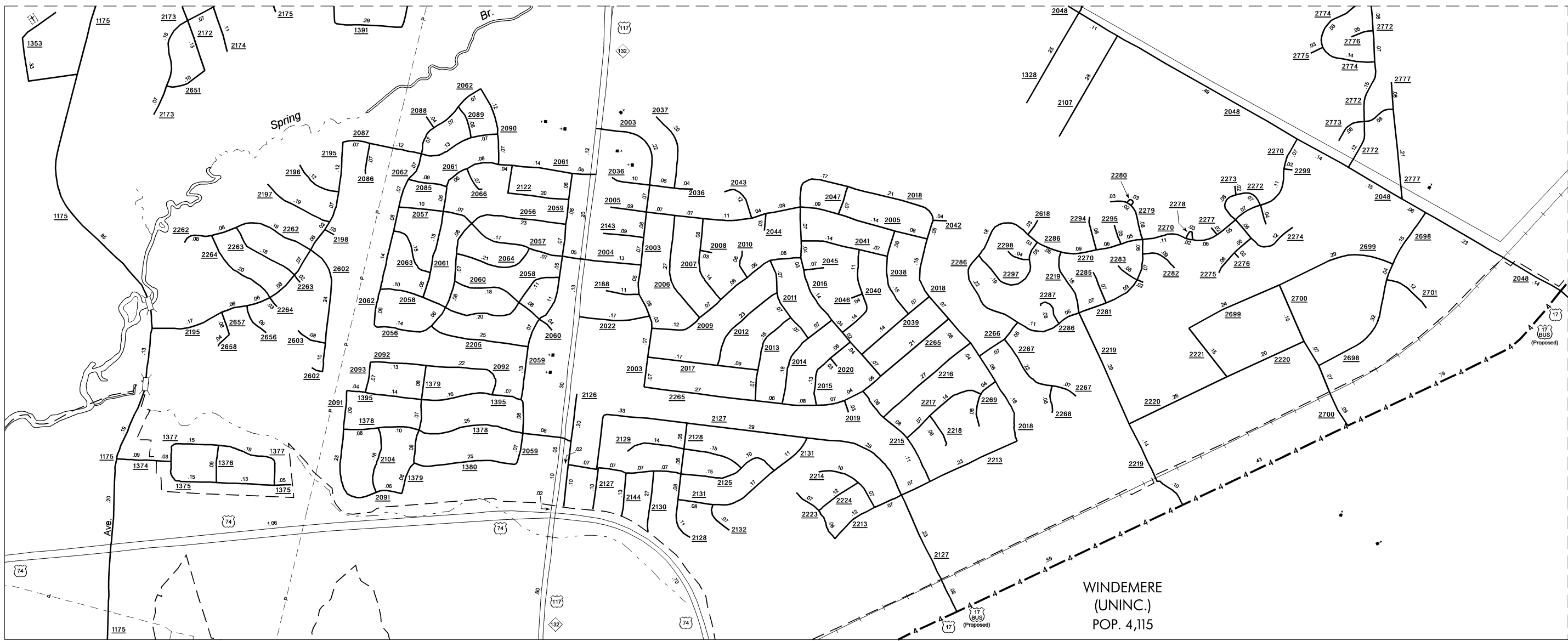
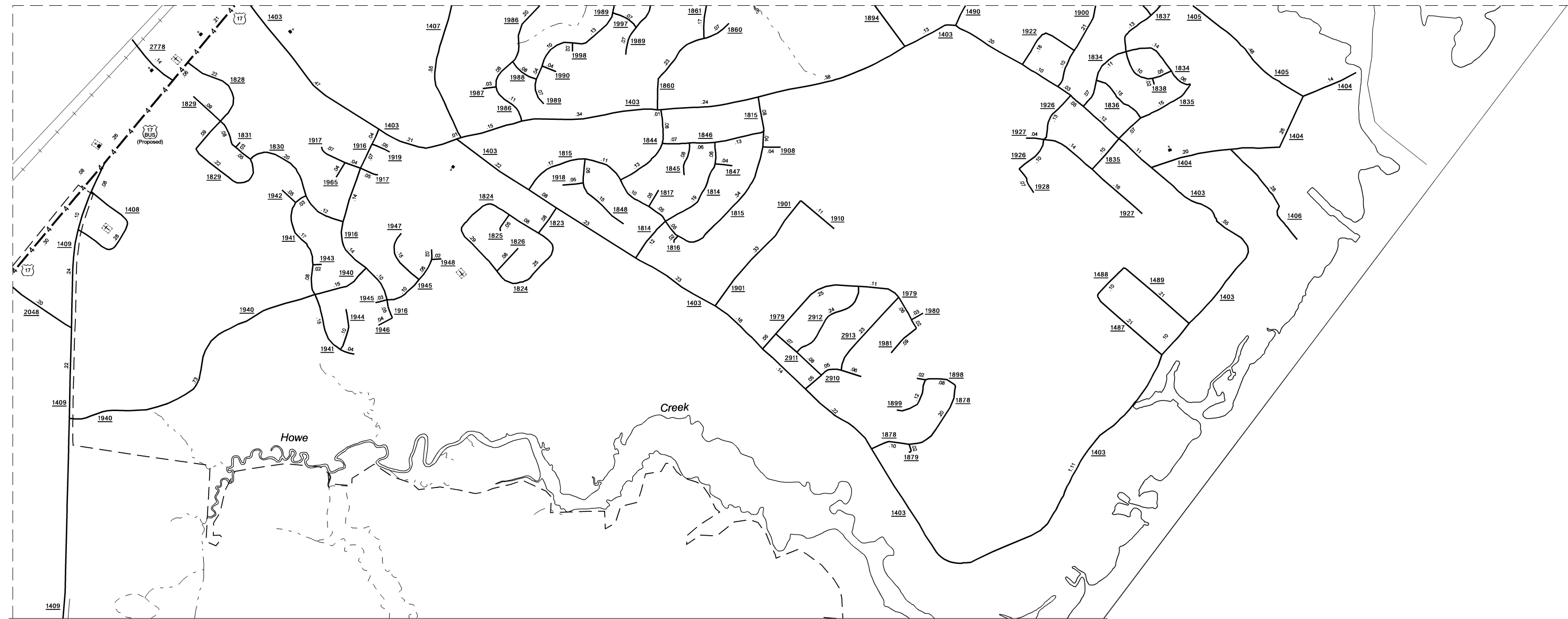


COPIES OF THIS MAP ARE AVAILABLE TO THE PUBLIC AT A NOMINAL COST ADDRESS: N.C. DEPARTMENT OF TRANSPORTATION 3401 CARR SANDBURG CT. RALEIGH, N.C. 27610

REVISED 10/1/05 BCH 11/20/06 BCH 3/20/07 BCH 5/11/07 BCH 5/31/07 BCH 6/1/07 BCH 7/31/07 BCH 5/28/08 BCH 6/30/08 BCH



ENLARGED MUNICIPAL AND SUBURBAN AREAS
NEW HANOVER COUNTY
NORTH CAROLINA
PREPARED BY THE
NORTH CAROLINA DEPARTMENT OF TRANSPORTATION
INFORMATION TECHNOLOGY - IMG UNIT
IN COOPERATION WITH THE
U.S. DEPARTMENT OF TRANSPORTATION
FEDERAL HIGHWAY ADMINISTRATION

0 SCALE 0.5 MILE
1 : 6