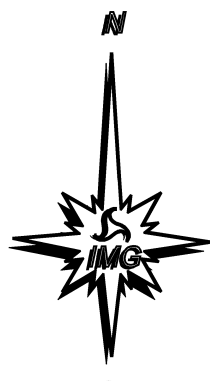
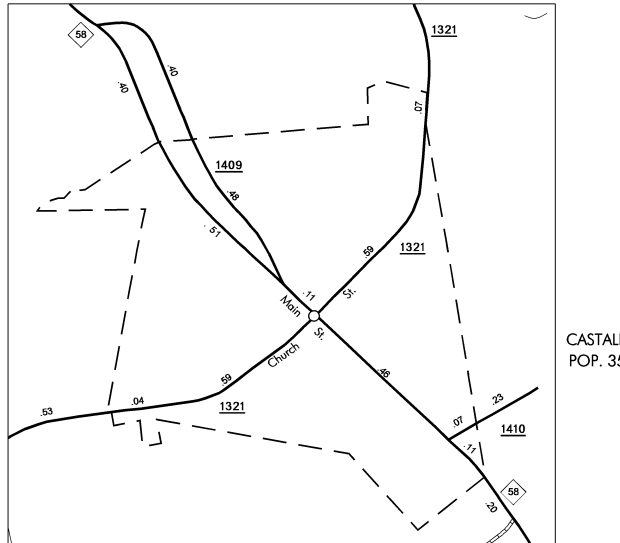
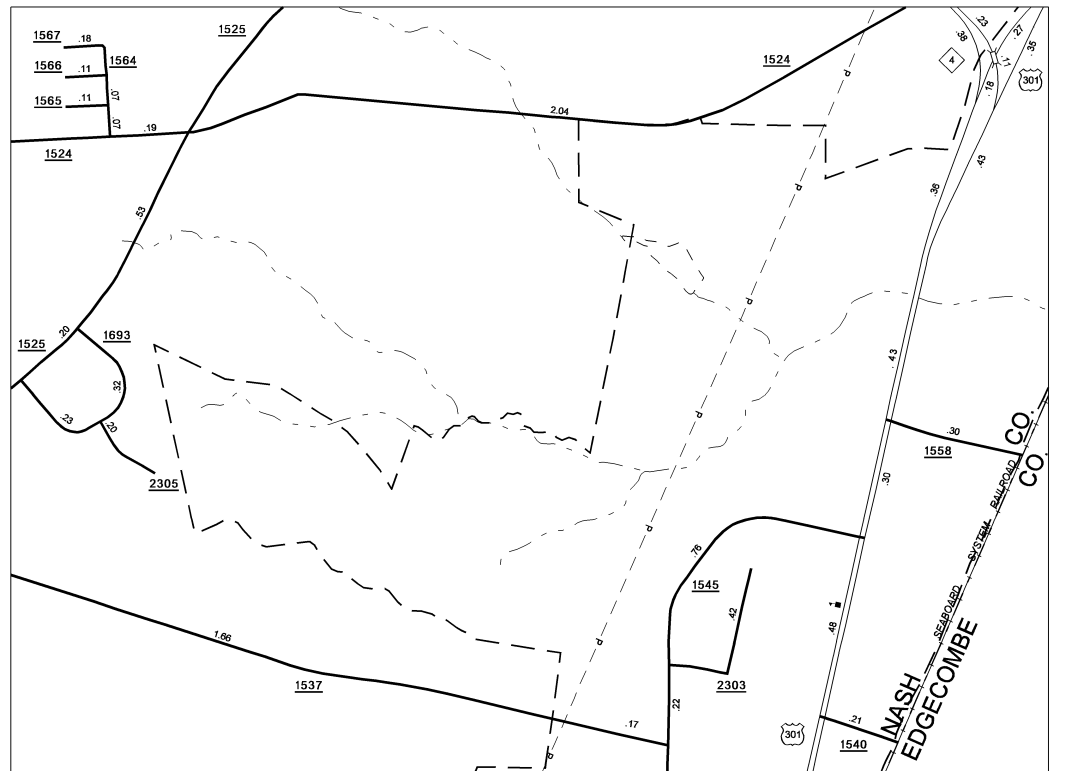
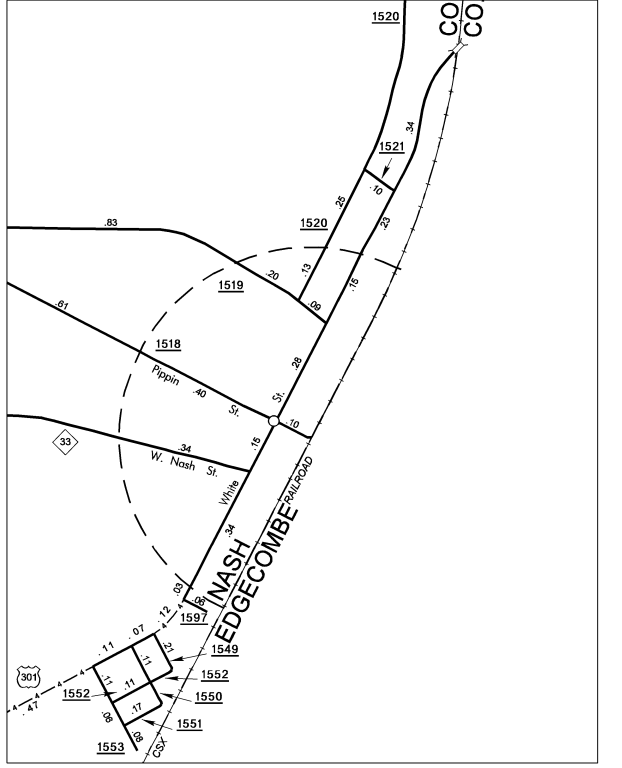
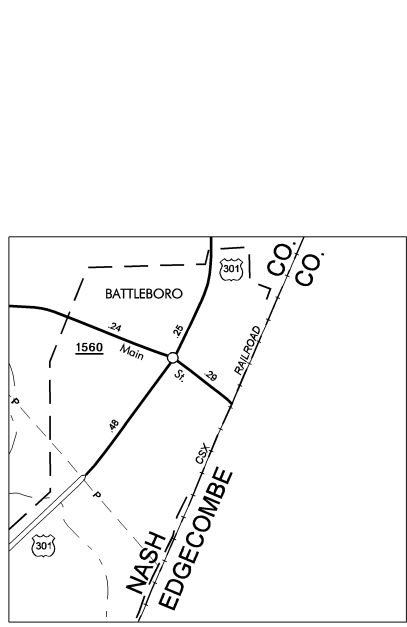
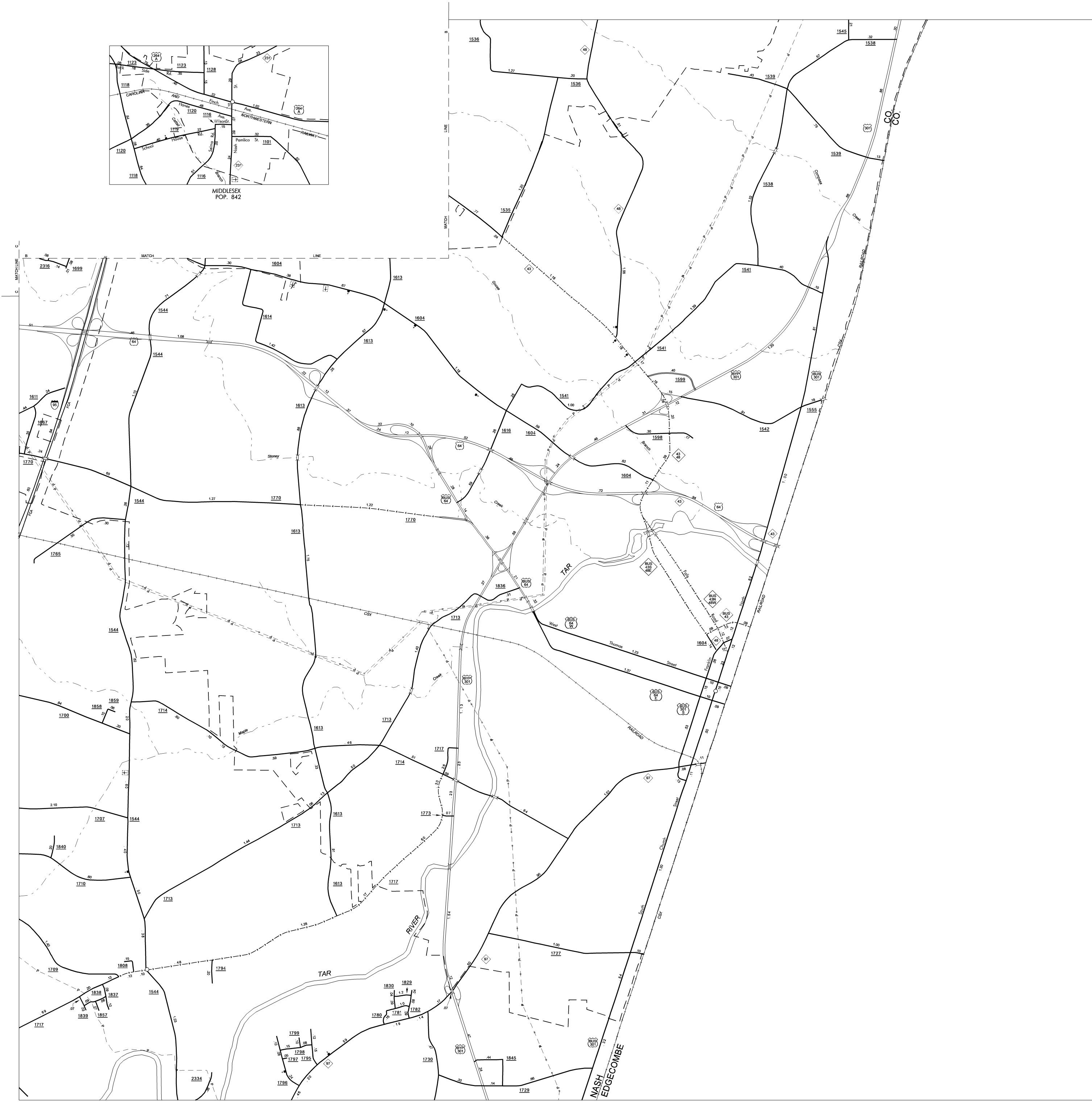
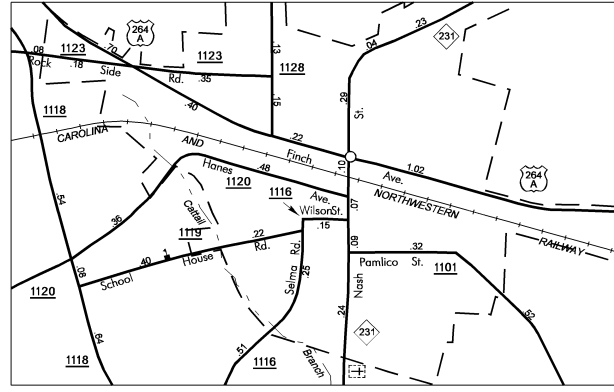
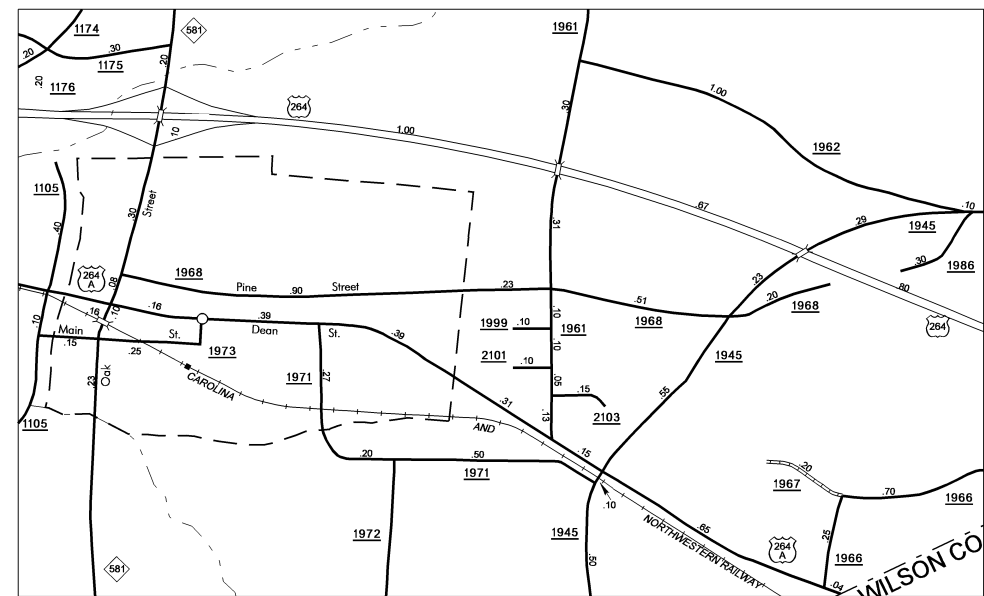
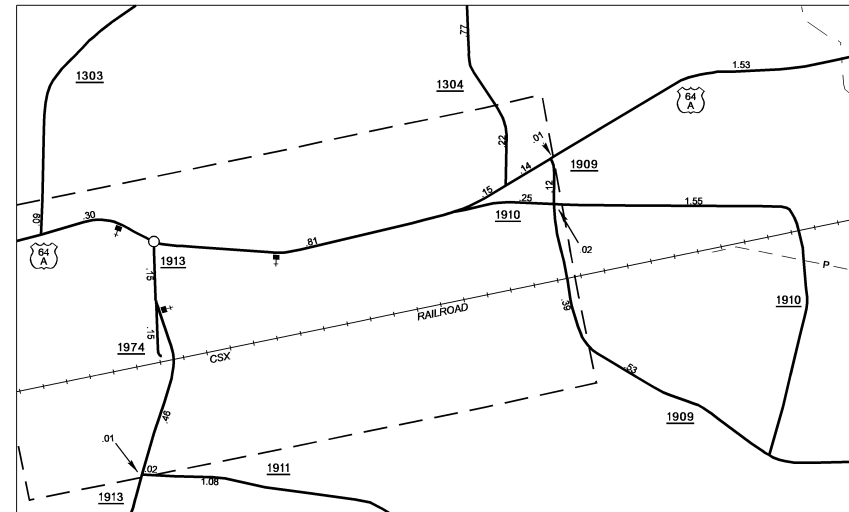
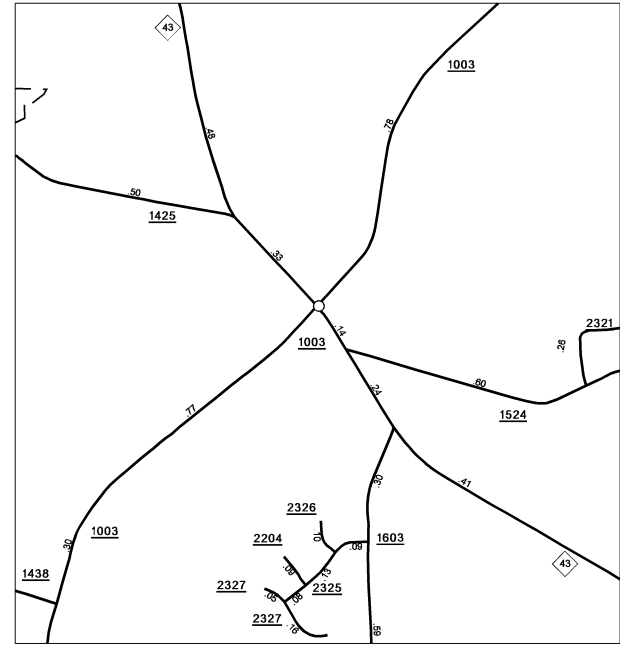
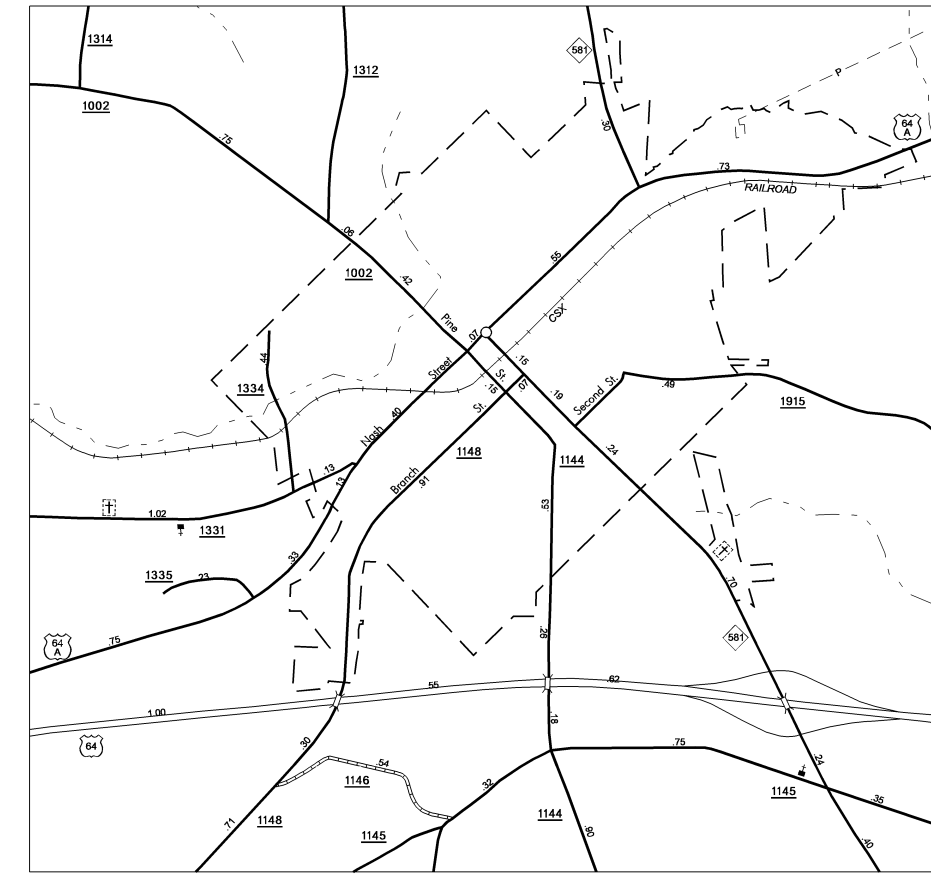


COPIES OF THIS MAP ARE AVAILABLE
TO THE PUBLIC AT A NOMINAL COST
ADDRESS:
N.C. DEPARTMENT OF TRANSPORTATION
3401 CHASE SANDHURST CT.
RALEIGH, N.C. 27610

REVISED
10/20/01 MEM
1/24/02 MEM
1/14/03 MEM
3/7/03 MEM
3/27/03 MEM
1/07/05 TRP
6/16/06 BDG
10/24/06 BDG
11/28/06 BDG
7/13/07 BDG
7/23/07 BDG
1/17/08 BDG
2/12/08 BDG
3/26/08 BDG
7/17/08 BDG



ENLARGED MUNICIPAL AND SUBURBAN AREAS

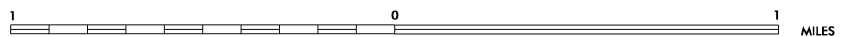
NASH COUNTY NORTH CAROLINA

PREPARED BY THE

NORTH CAROLINA DEPARTMENT OF TRANSPORTATION
INFORMATION TECHNOLOGY - IMG UNIT

IN COOPERATION WITH THE
U.S. DEPARTMENT OF TRANSPORTATION
FEDERAL HIGHWAY ADMINISTRATION

SCALE



10,000 FOOT GRID BASED ON NORTH CAROLINA PLANE COORDINATE SYSTEM

POLYCONIC PROJECTION

SHEET 2 OF 2