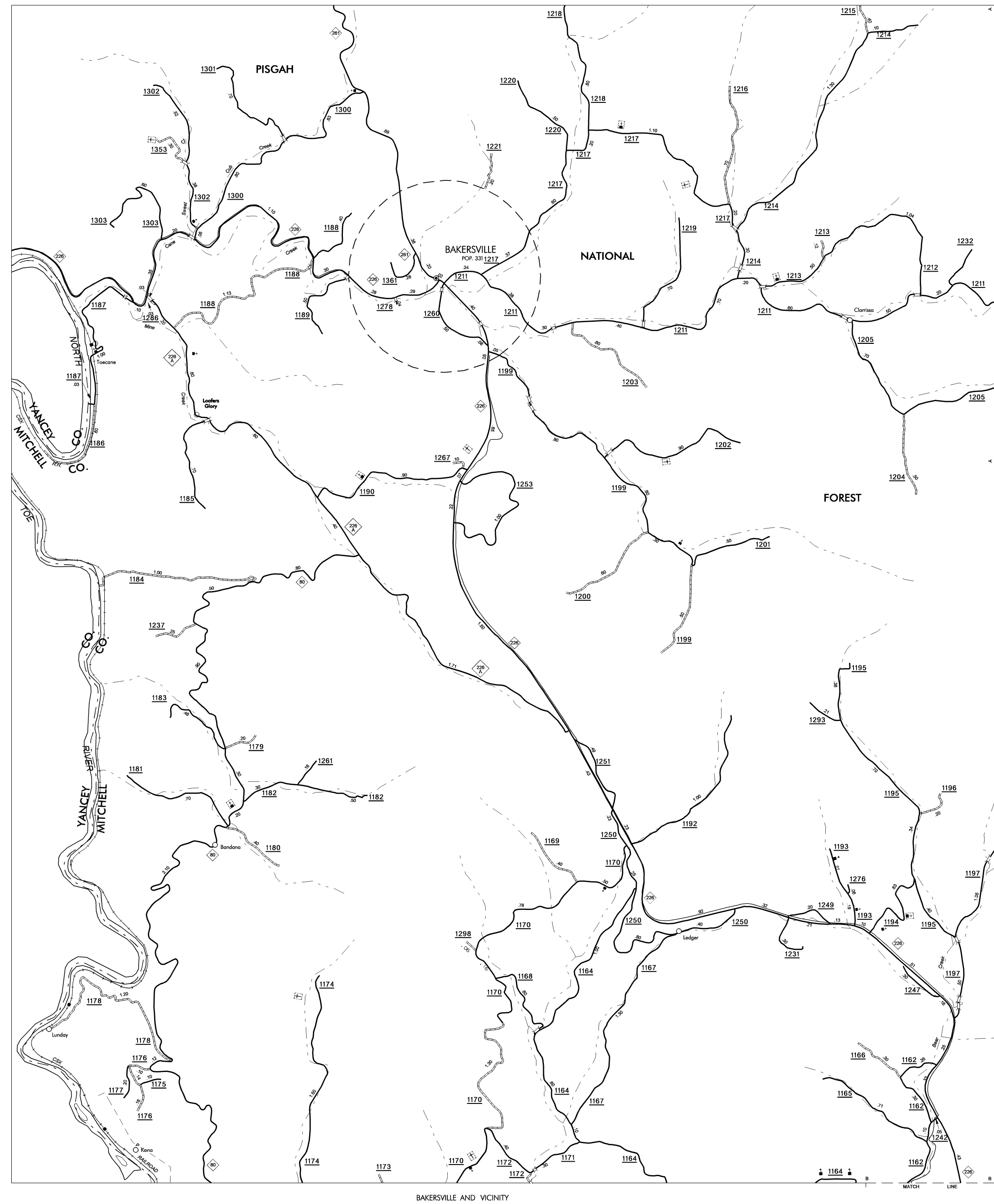


COPIES OF THIS MAP ARE AVAILABLE
TO THE PUBLIC AT A NOMINAL COST
ADDRESS:
N.C. DEPARTMENT OF TRANSPORTATION
1011107 MG
3401 CARL SANDERS CT.
RALEIGH, N.C. 27603

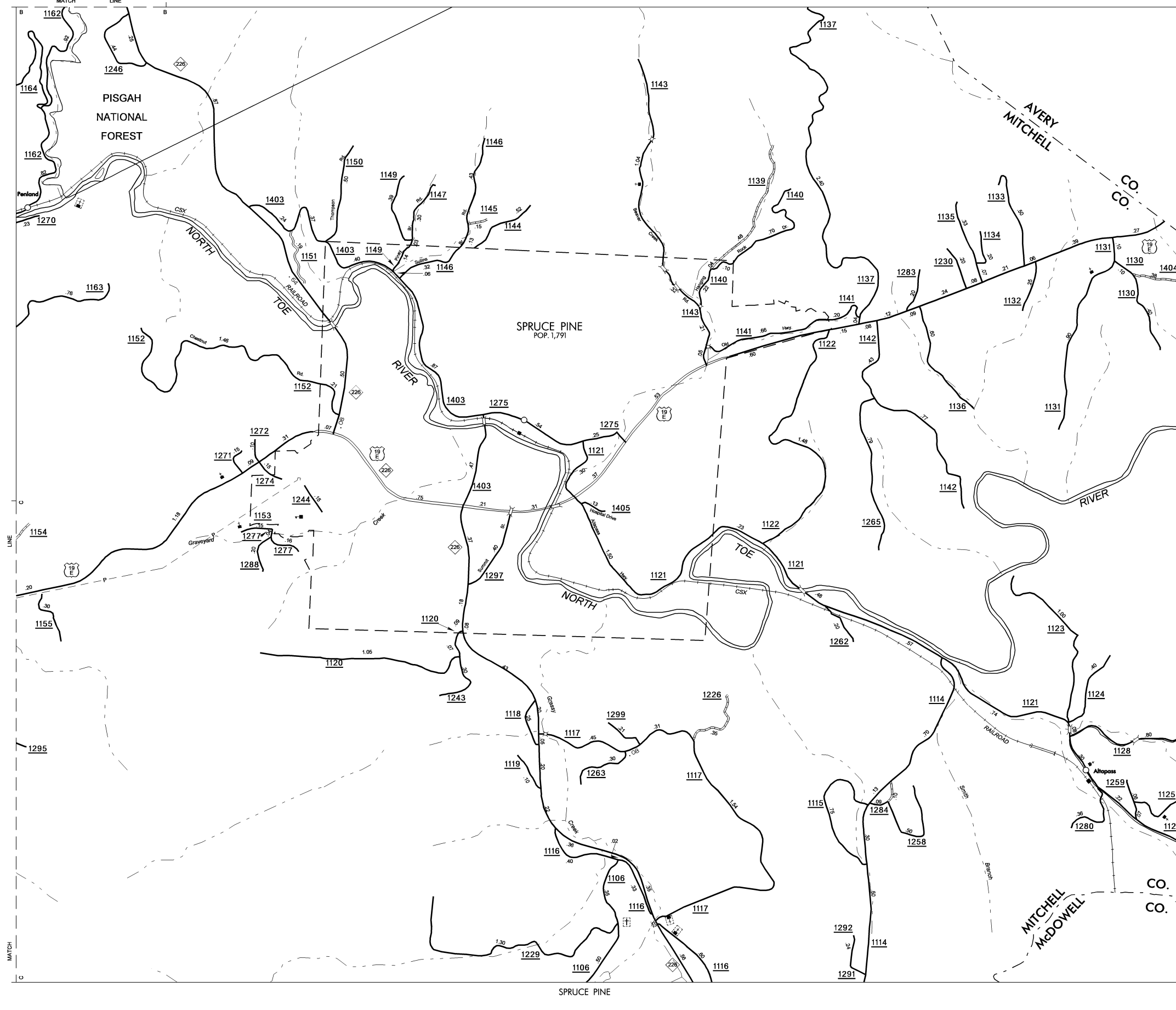
REVISED
10/11/07 MG
6/12/08 MG

SUPP 1

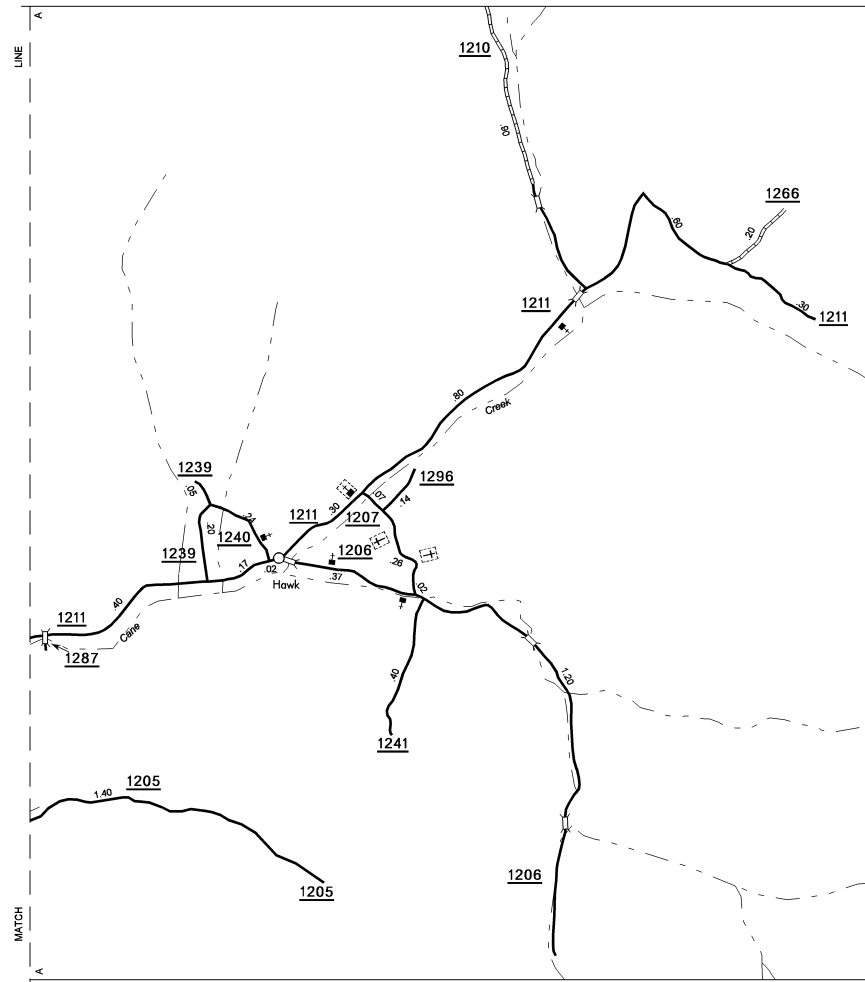
MITCHELL



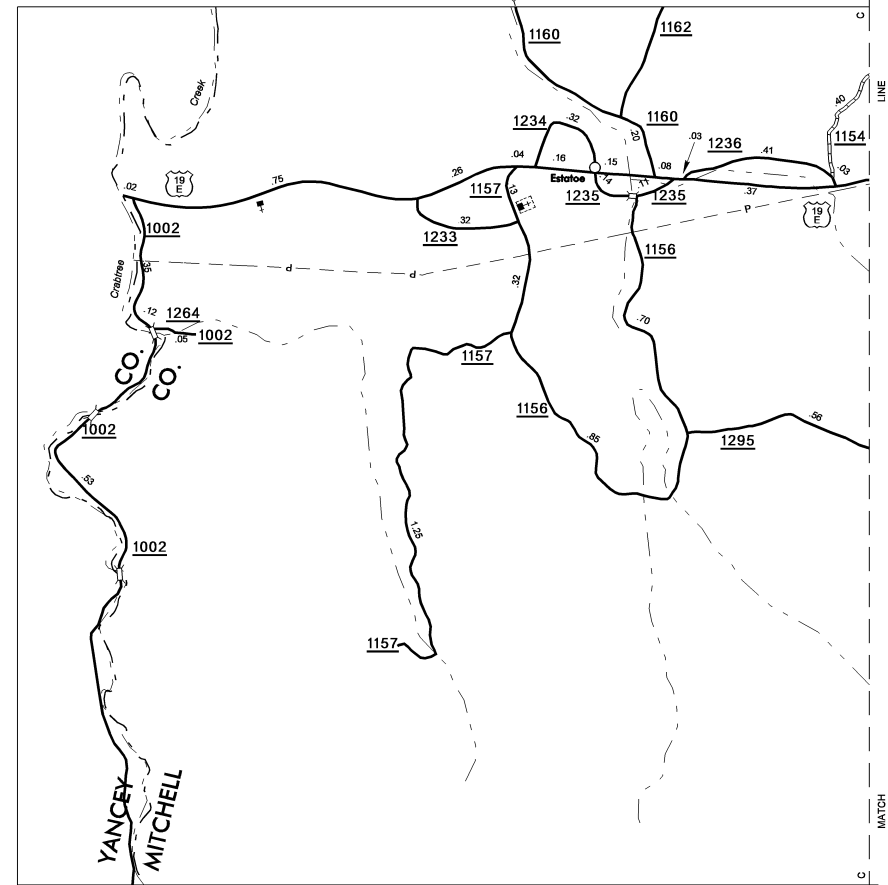
BAKERSVILLE AND VICINITY



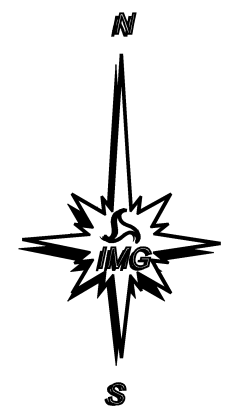
MITCHELL



HAWK



ESTATOE

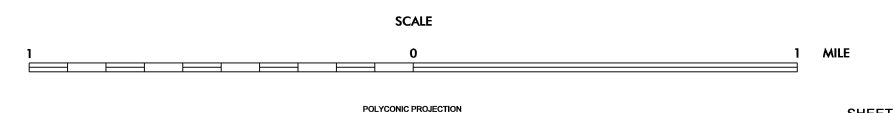


ENLARGED MUNICIPAL AND SUBURBAN AREAS

MITCHELL COUNTY

NORTH CAROLINA

PREPARED BY THE
NORTH CAROLINA DEPARTMENT OF TRANSPORTATION
INFORMATION TECHNOLOGY - IMG UNIT
IN COOPERATION WITH THE
U.S. DEPARTMENT OF TRANSPORTATION
FEDERAL HIGHWAY ADMINISTRATION



SHEET 2 OF 2