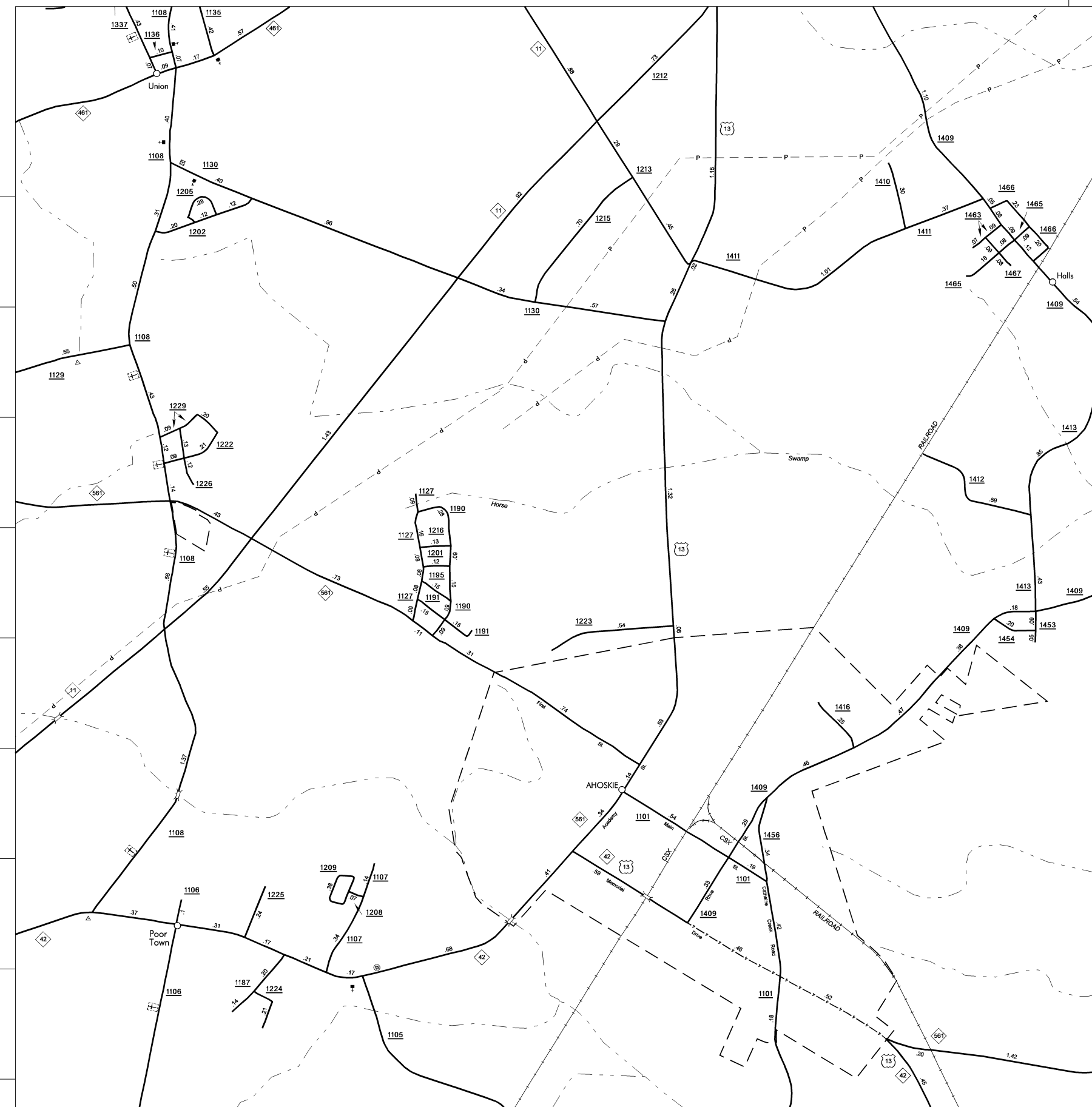


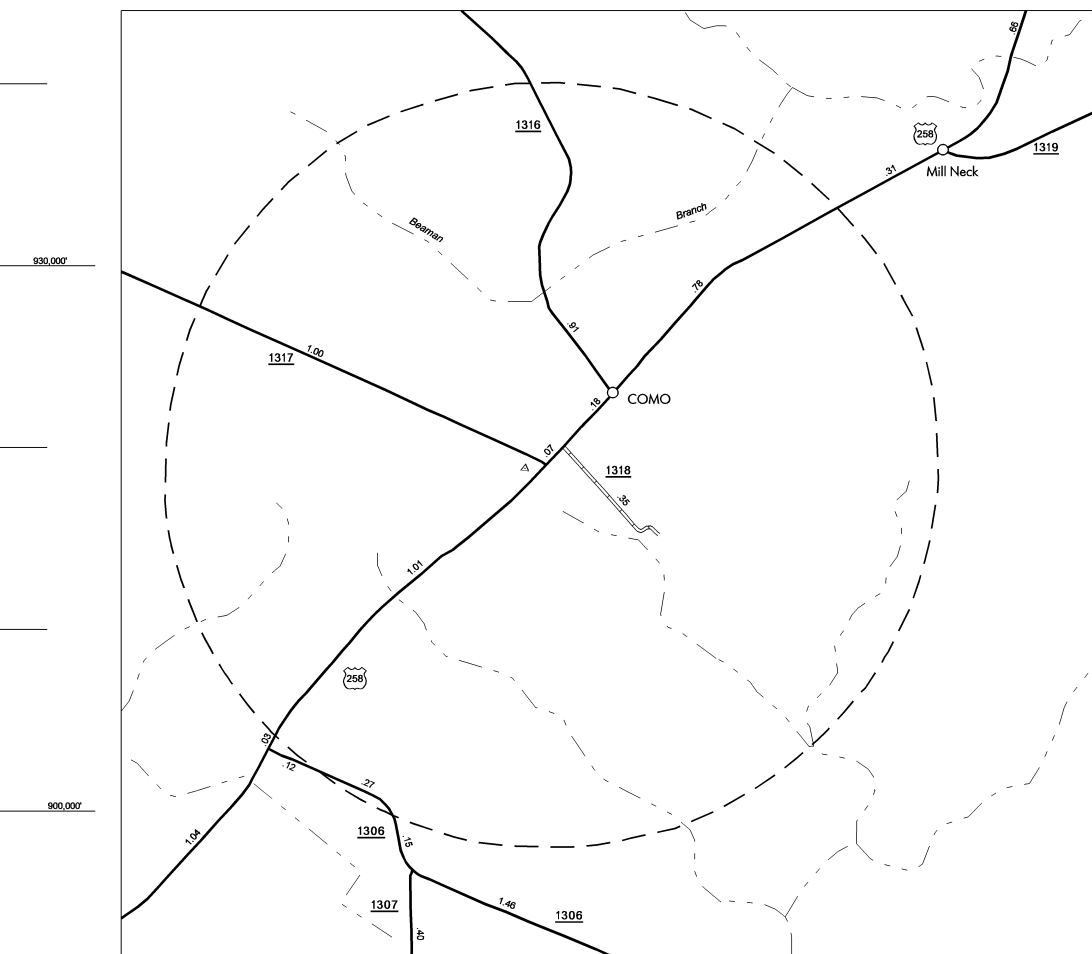
COPIES OF THIS MAP ARE AVAILABLE  
TO THE PUBLIC AT A NOMINAL COST  
ADDRESS:  
N.C. DEPARTMENT OF TRANSPORTATION  
100 SOUTH MAIN STREET  
SAFETY DIVISION  
RALEIGH, N.C. 27603

REVISED  
10/31/06 ELO  
6/1/06 RLN

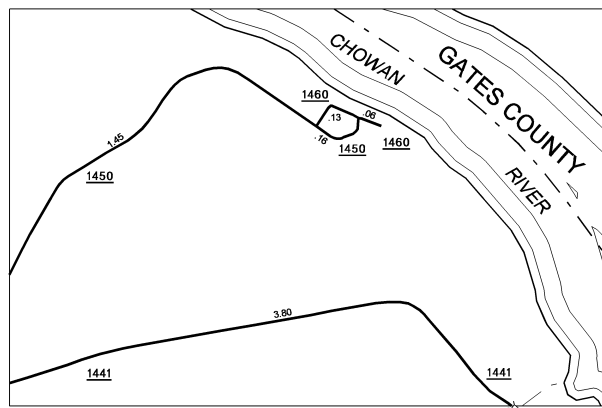
HERTFORD



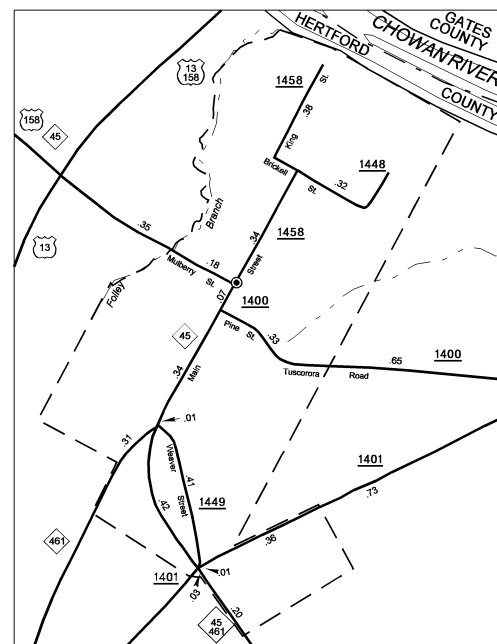
Ahoke  
Pop. 4,436



Como  
Pop. 76

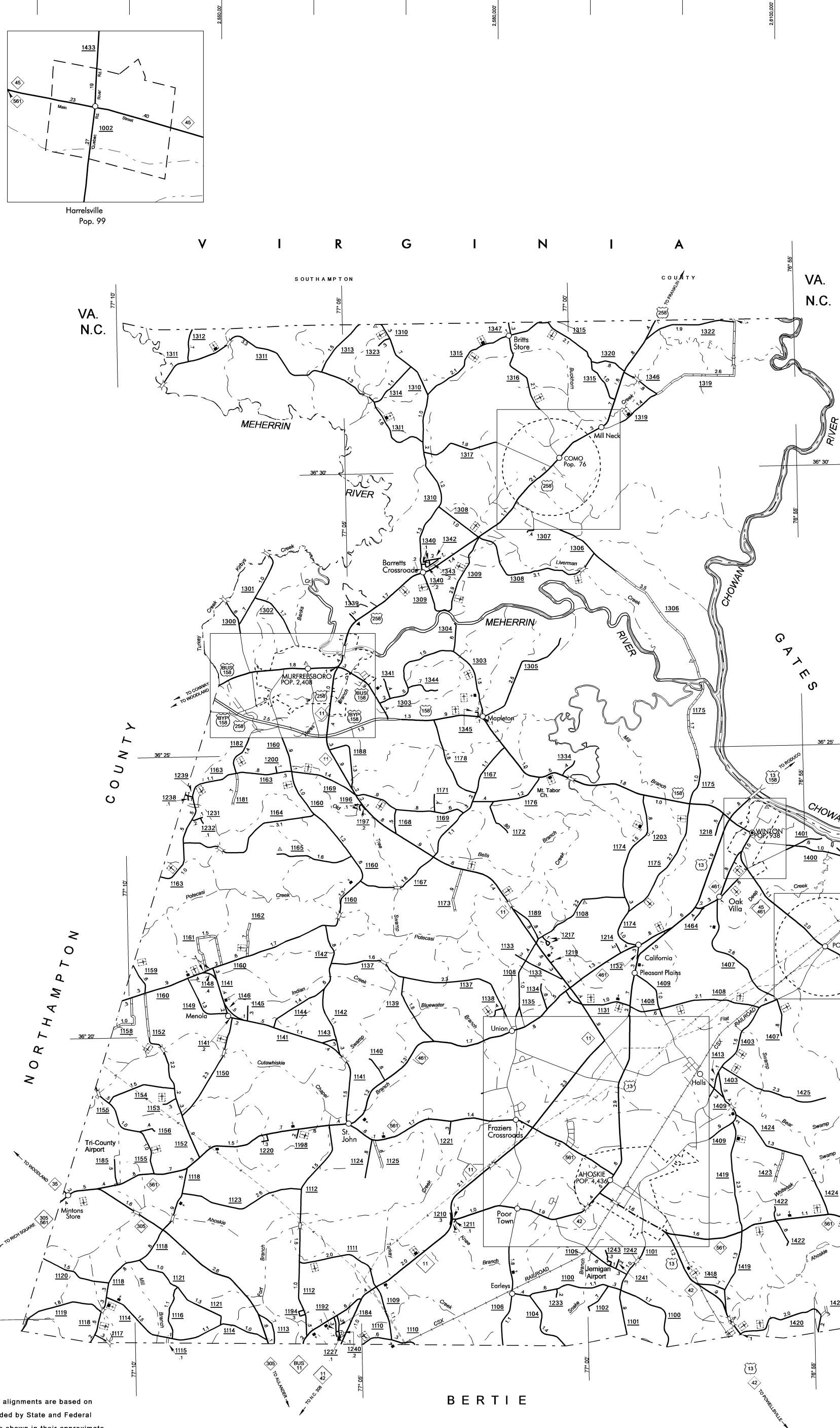


Taylor Pond

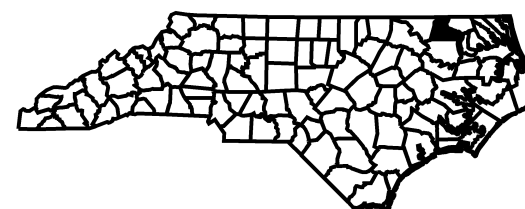


Winton  
Pop. 938

County Boundary alignments are based on  
information provided by State and Federal  
agencies, and are shown in their approximate  
locations.

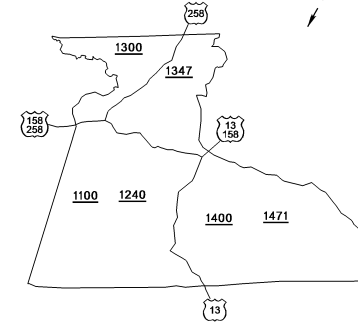


BERTIE



NOTE: MAP INCLUDES ONLY STATE MAINTAINED ROADS  
OR IMPORTANT NON-SYSTEM ROADS.  
ROADS SHOWN AS OF JUNE 10, 2008

WICCAON



KEY TO COUNTY ROAD NUMBERS  
ALSO NUMBER

# HERTFORD COUNTY NORTH CAROLINA

PREPARED BY THE  
NORTH CAROLINA DEPARTMENT OF TRANSPORTATION  
INFORMATION TECHNOLOGY - IMG UNIT

IN COOPERATION WITH THE  
U.S. DEPARTMENT OF TRANSPORTATION  
FEDERAL HIGHWAY ADMINISTRATION

SCALE

1 0 1 2 3 4 MILES

0 0.5 1 MILE

SCALE FOR ENLARGEMENTS

10,000 FOOT GRID BASED ON NORTH CAROLINA PLANE COORDINATE SYSTEM

POLYCONIC PROJECTION

SHEET 1 OF 1

HERTFORD COUNTY

091