

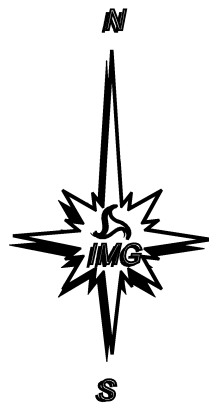
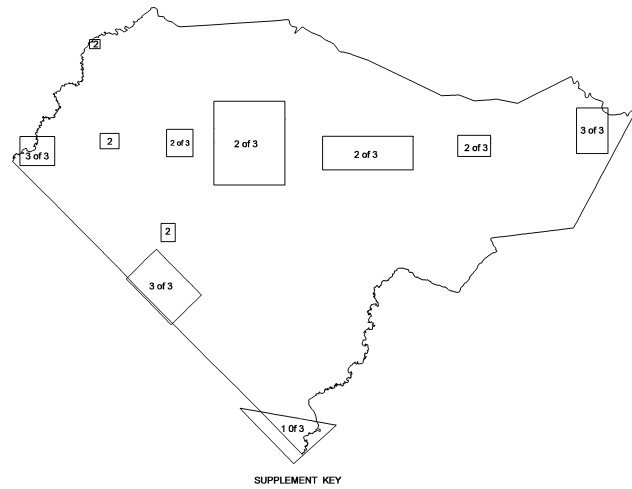
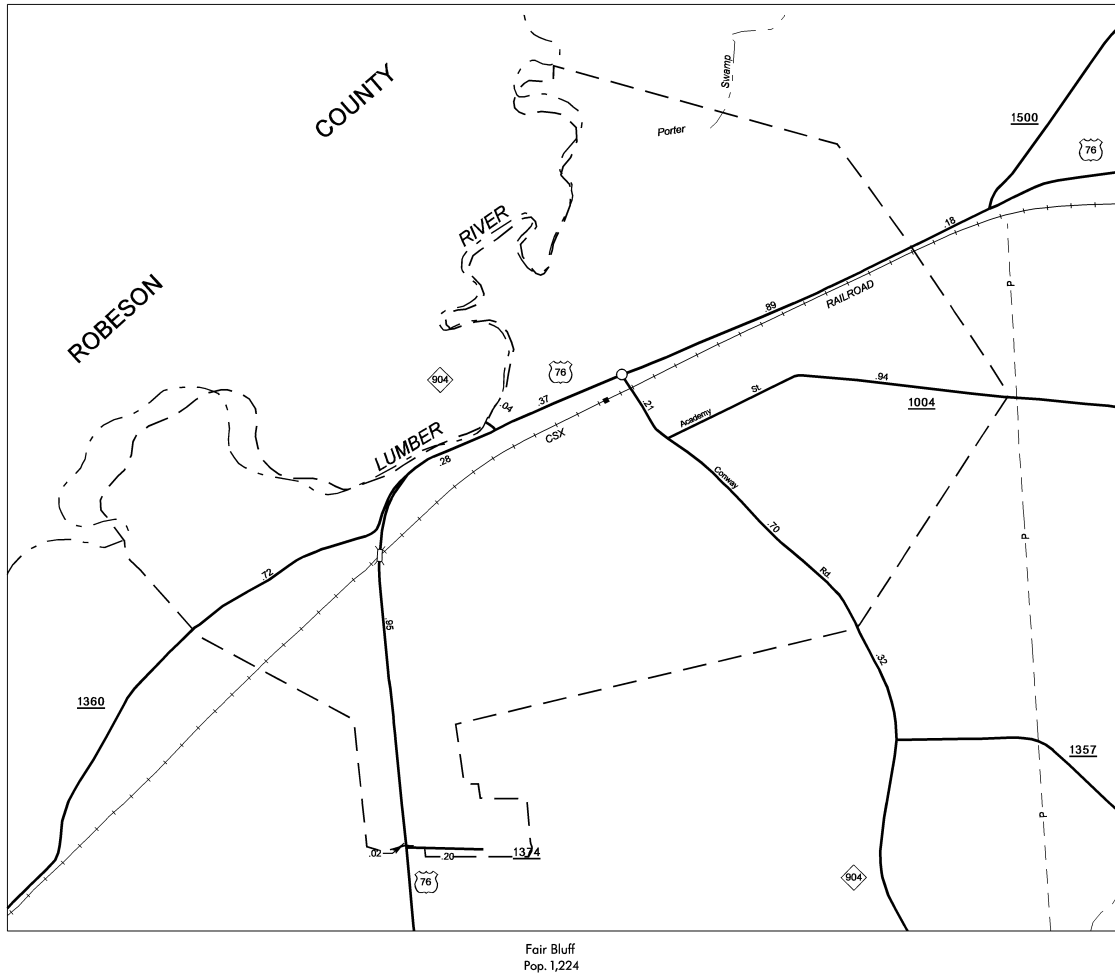
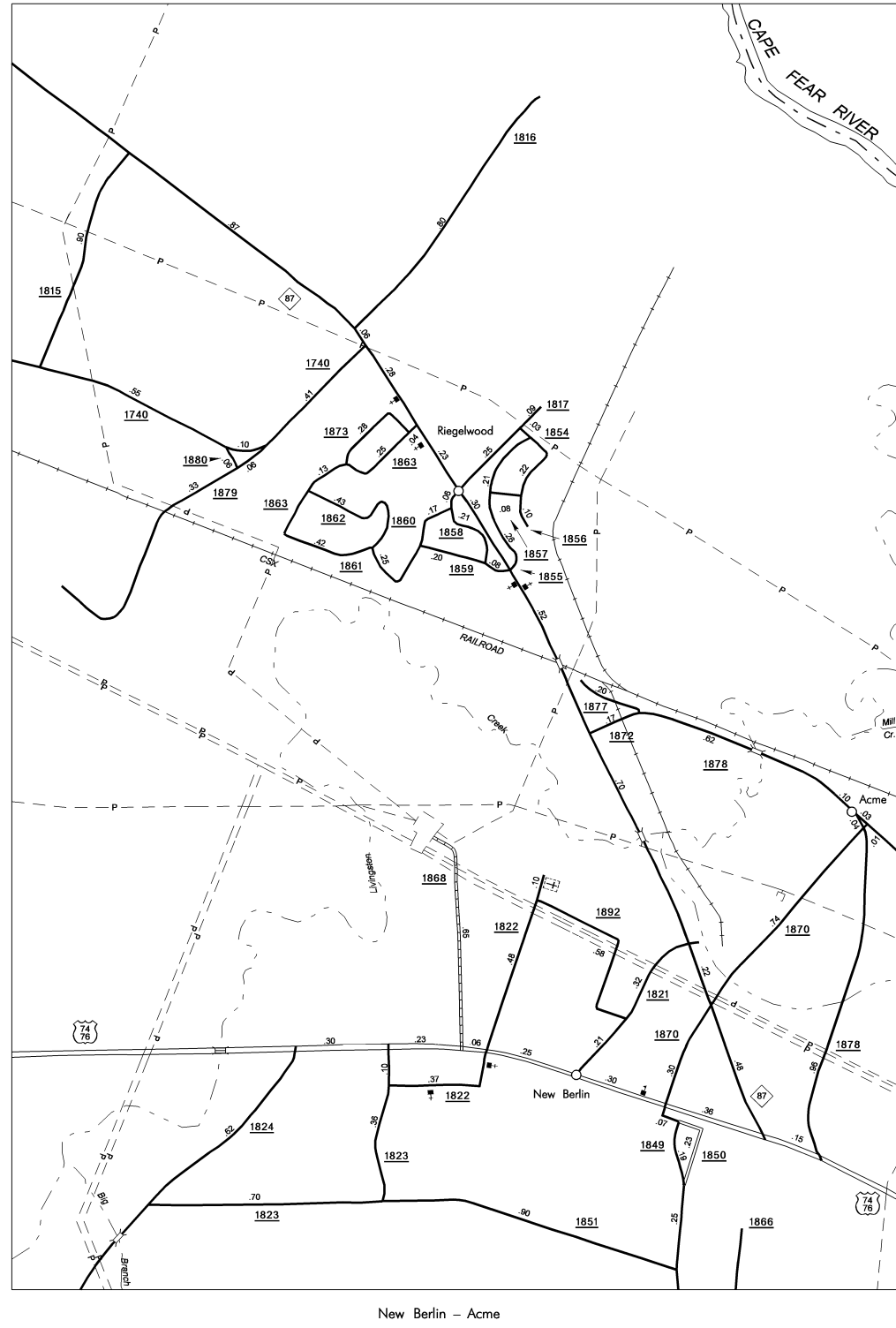
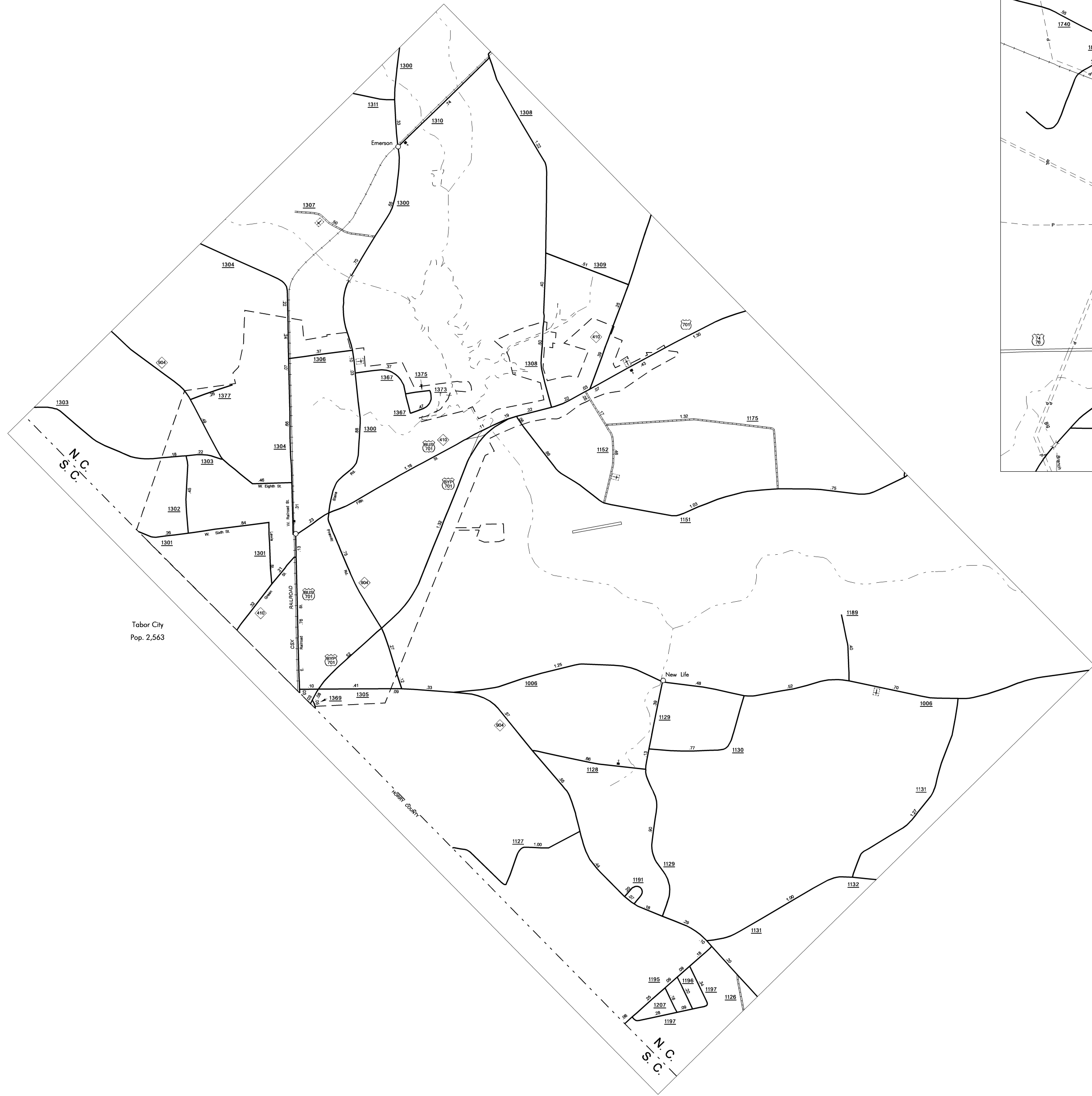
COLUMBUS SUP 2

COPIES OF THIS MAP ARE AVAILABLE TO THE PUBLIC AT A NOMINAL COST

ADDRESS

N.C. DEPARTMENT OF TRANSPORTATION  
1502406 JMB  
3401 CARI SANDS BLVD CT  
RALEIGH, N.C. 27603

REVISION  
1/26/05 RLK  
6/30/05 MAG  
9/1/06 JMB  
10/24/06 JMB  
2/5/07 JMB  
5/11/07 JMB  
1/10/08 JMB  
2/12/08 JMB  
2/20/08 JMB



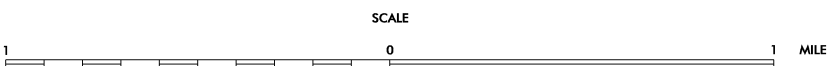
ENLARGED MUNICIPAL AND SUBURBAN AREAS

# COLUMBUS COUNTY

NORTH CAROLINA

PREPARED BY THE  
NORTH CAROLINA DEPARTMENT OF TRANSPORTATION  
INFORMATION TECHNOLOGY - IMG UNIT

IN COOPERATION WITH THE  
U.S. DEPARTMENT OF TRANSPORTATION  
FEDERAL HIGHWAY ADMINISTRATION



10,000 FOOT GRID BASED ON NORTH CAROLINA PLANE COORDINATE SYSTEM  
POLYCONIC PROJECTION