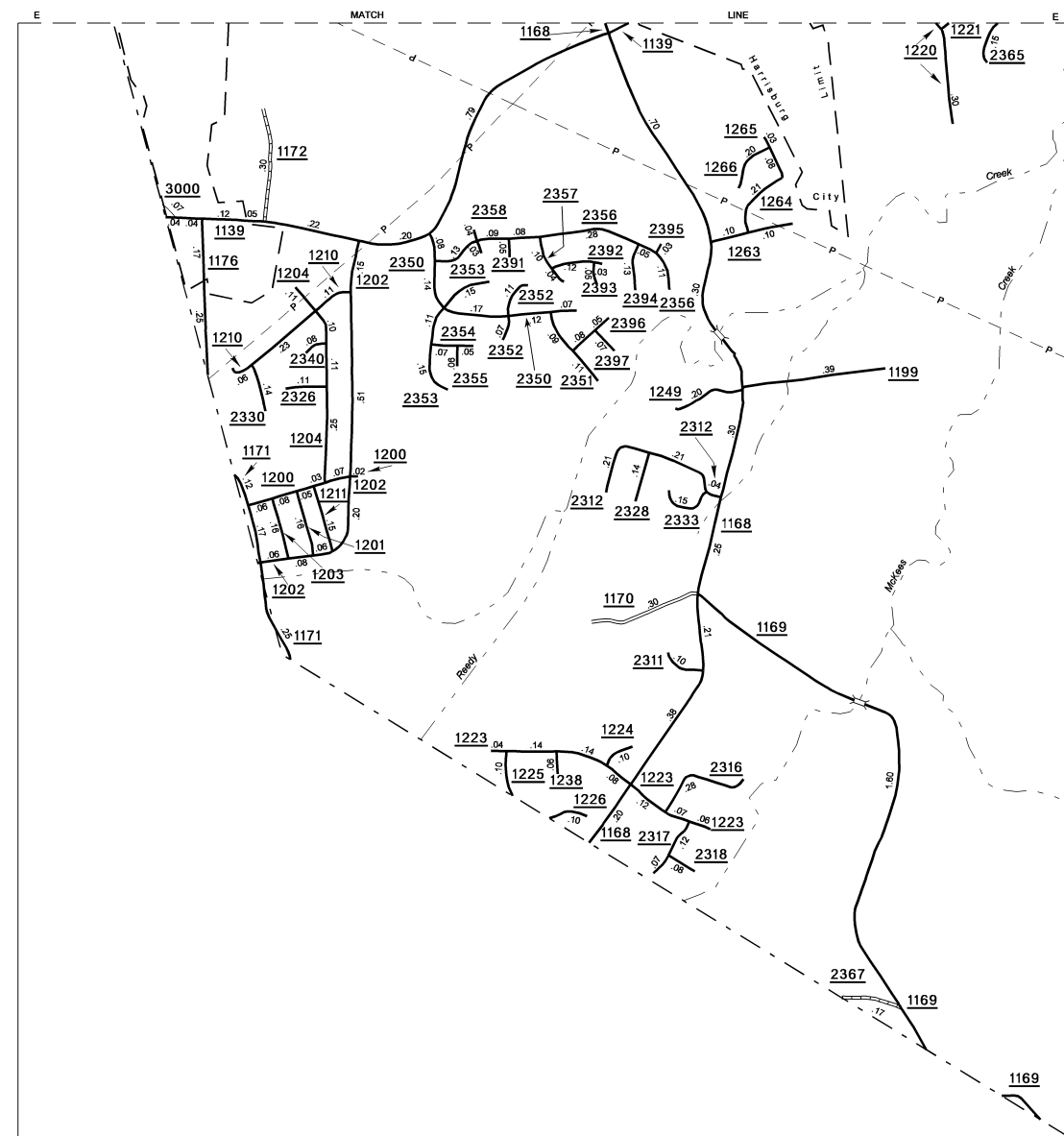


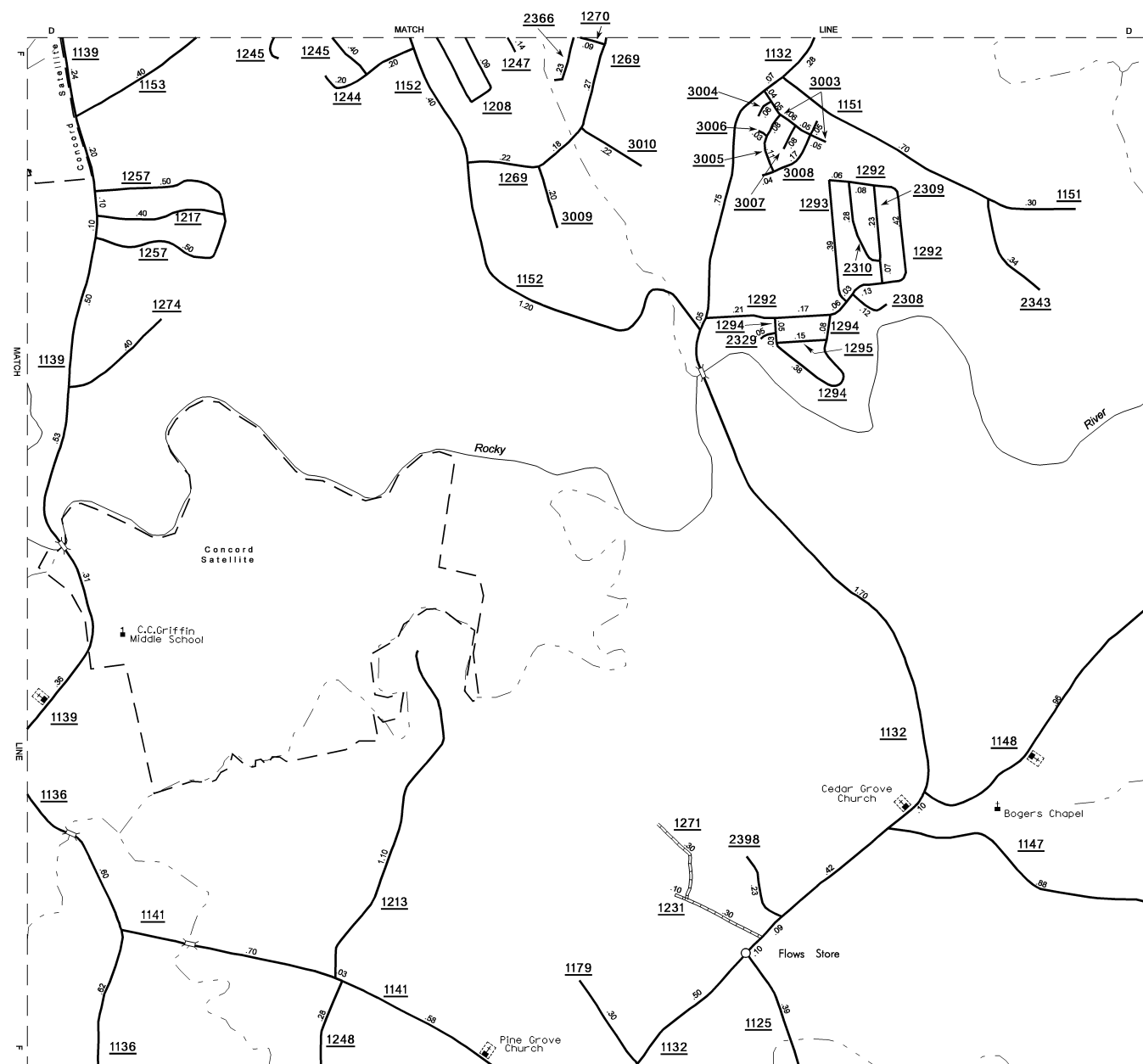
COPIES OF THIS MAP ARE AVAILABLE
TO THE PUBLIC AT A NOMINAL COST
ADDRESS:
N.C. DEPARTMENT OF TRANSPORTATION
LANDING SERVICES
3401 CHASE DRIVE, SUITE 200
RALEIGH, NC 27603

REVISED
01/30/05 YRT
2/9/06 MEM
10/19/06 MEM
5/3/07 MEM
10/9/07 MEM
11/21/07 MEM
12/27/07 MEM
6/9/08 MEM

CABARRUS



Inset 2



Inset 3

IREDELL
COUNTY

ROWAN

COUNTY

MECKLENBURG

COUNTY

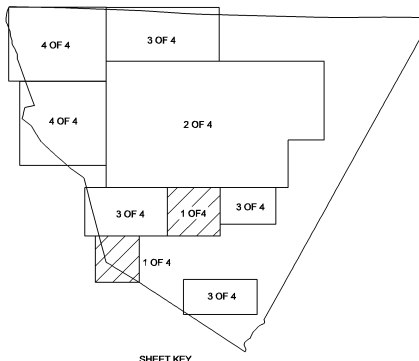
UNION
COUNTY

STANLY
COUNTY

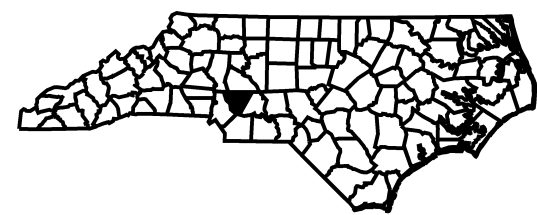
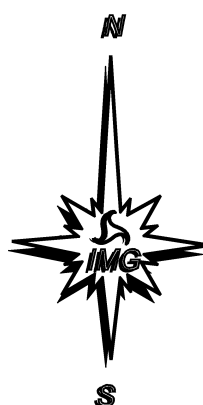
COUNTY

County Boundary alignments are based on
information provided by State and Federal
agencies, and are shown in their approximate
locations.

- LEGEND**
- PRIMITIVE OR UNIMPROVED ROAD
 - GRADED AND DRAINED ROAD
 - SOIL, GRAVEL OR STONE SURFACED ROAD
 - HARD SURFACED ROAD
 - 4 LANE UNDIVIDED HIGHWAY
 - DIVIDED HIGHWAY
 - HIGHWAY WITH FRONTAGE ROADS
 - FCA
 - NON-SYSTEM ROAD
 - PROJECTED LOCATION
 - INTERSECTION DISTANCE
 - TRAFFIC CIRCLE
 - HIGHWAY INTERCHANGE
 - DETAILED HIGHWAY INTERCHANGE
 - ROAD THROUGH MOUNTAIN PASS
 - HIGHWAY BRIDGE
 - UNDERPASS
 - OVERPASS
 - DRAW SPAN ON BRIDGE
 - HIGHWAY TUNNEL
 - FORD
 - INTERSTATE HIGHWAY
 - U.S. NUMBERED HIGHWAY
 - N.C. NUMBERED HIGHWAY
 - U.S. NUMBERED BICYCLE ROUTE
 - N.C. NUMBERED BICYCLE ROUTE
 - INTERSTATE INTERCHANGE NUMBER
 - SECONDARY ROAD NUMBER
 - CABLE
 - RAILROAD, ANY NUMBER OF TRACKS
USED BY SINGLE OPERATING COMPANY
RAILROAD, ANY NUMBER OF TRACKS
USED BY MORE THAN ONE OPERATION
COMPANY ON SAME OR ADJACENT
RIGHT-OF-WAY
 - RAILROAD STATION
 - GRADE CROSSING
 - UNDERPASS
 - OVERPASS
 - RAILROAD TUNNEL
 - INSET AREA
 - URBAN EXTENSION
 - RESERVATION OR
PARK BOUNDARY
 - CITY LIMIT
 - NATIONAL FOREST BOUNDARY
 - STATE FOREST BOUNDARY
 - FEDERAL GAMELAND BOUNDARY
 - STATE GAMELAND BOUNDARY
 - MILITARY RESERVATION BOUNDARY
 - COUNTY LINE
 - STATE LINE
 - INCORPORATED CITY OR VILLAGE,
(GENERALIZED)
 - FREE OR TOLL FERRY
 - CANAL
 - NARROW STREAM
 - WIDE STREAM
 - DAM WITH LOCK
 - DAM
 - RESERVOIR, POND, OR LAKE
 - COMMUNITY AND TOWN CENTER
 - COUNTY SEAT
 - SCHOOL
 - COLLEGE OR UNIVERSITY
 - HOSPITAL
 - CHURCH
 - CHURCH WITH CEMETERY
 - CEMETERY
 - PATROL STATION
 - CORRECTIONAL OR PENAL INSTN.
 - HIGHWAY GARAGE OR MAINT. YARD
 - HIGHWAY DIV. OR DIST. OFFICE
 - WEIGHT STATION
 - MONUMENT-SMALL HISTORICAL SITE
 - LIGHTHOUSE
 - MOUNTAIN PEAK
 - REST AREA
 - TRIANGULATION STATION
 - COAST GUARD STATION
 - MILITARY AIRFIELD
 - COMMERCIAL OR MUNICIPAL FIELD
 - HANGAR ON FIELD
 - LANDING STRIP
 - MARKED AUXILIARY FIELD



KEY TO COUNTY ROAD NUMBERS
ALSO NUMBERS, 1002 1006 1008 2000 2001



NOTE: MAP INCLUDES ONLY STATE MAINTAINED ROADS
OR IMPORTANT NON-SYSTEM ROADS.
ROADS SHOWN AS OF JUN. 9, 2008

CABARRUS COUNTY

NORTH CAROLINA

PREPARED BY THE
NORTH CAROLINA DEPARTMENT OF TRANSPORTATION
INFORMATION TECHNOLOGY - IMG UNIT

IN COOPERATION WITH THE
U.S. DEPARTMENT OF TRANSPORTATION
FEDERAL HIGHWAY ADMINISTRATION

SCALE

1 0 1 2 3 4 MILES

0 0.5 1 MILE

SCALE FOR ENLARGEMENTS

10,000 FOOT GRID BASED ON NORTH CAROLINA PLANE COORDINATE SYSTEM

POLYCONIC PROJECTION

SHEET 1 OF 4

DIVISION 10 DISTRICT 1 CABARRUS COUNTY

NORTH CAROLINA