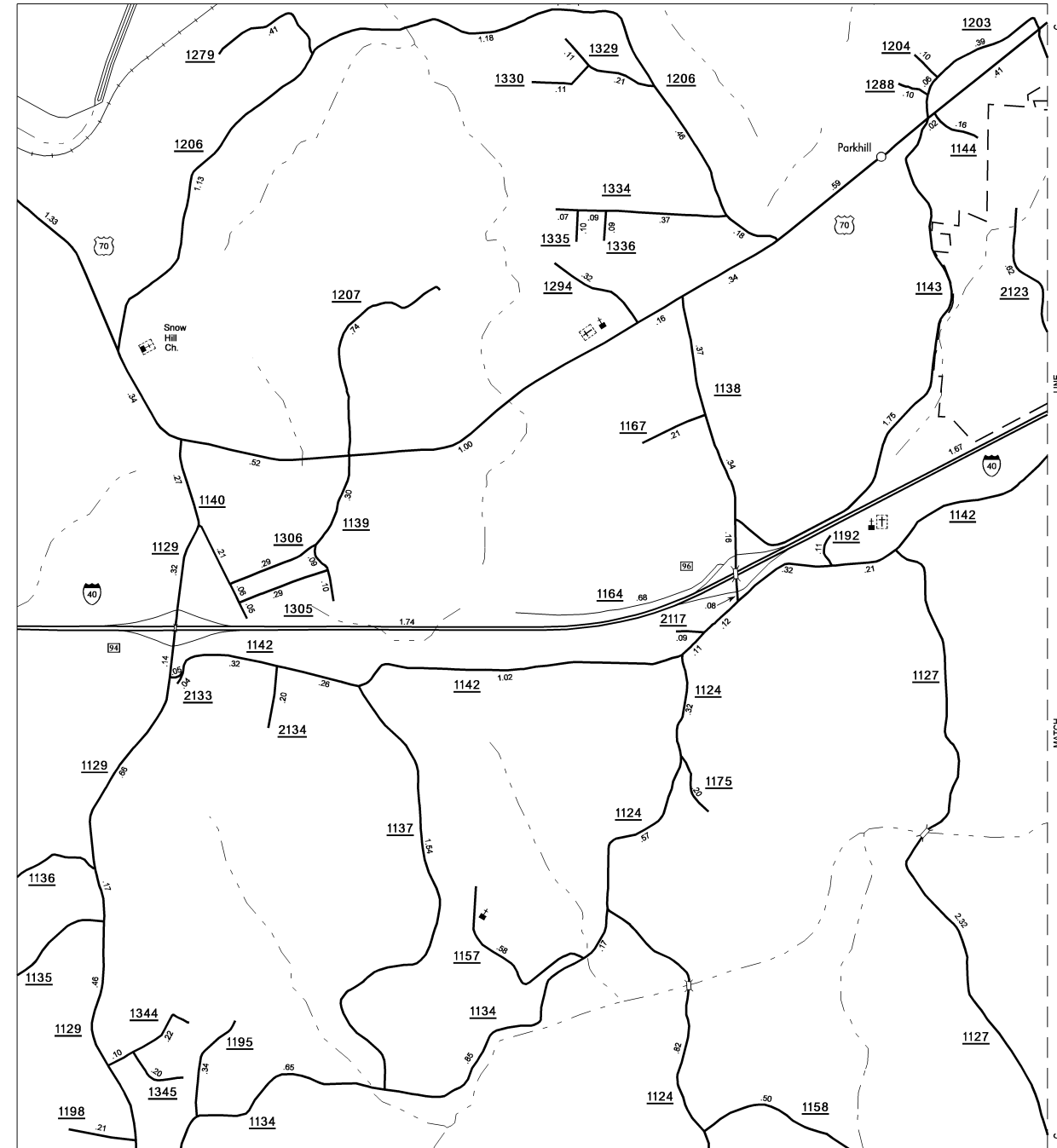
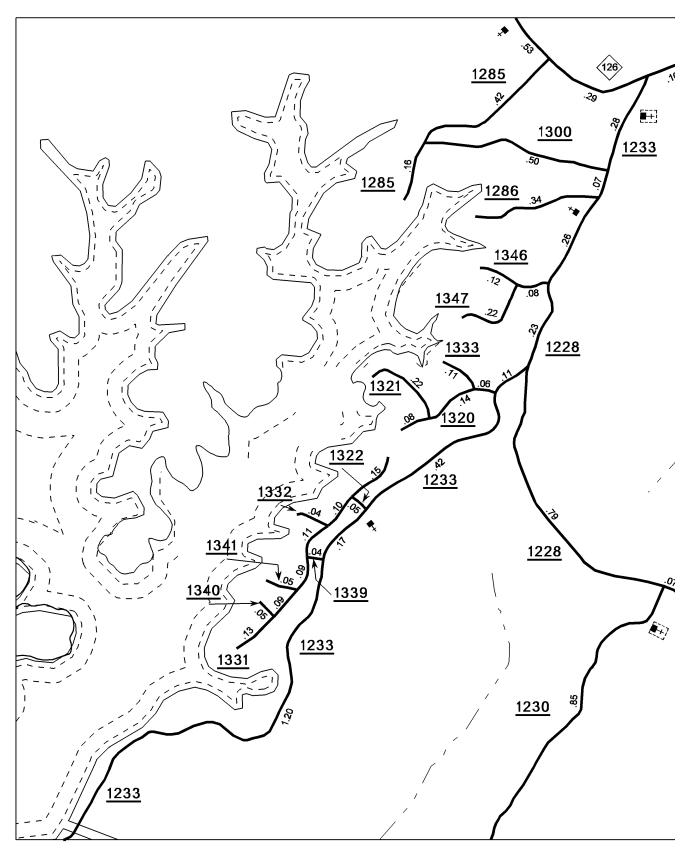
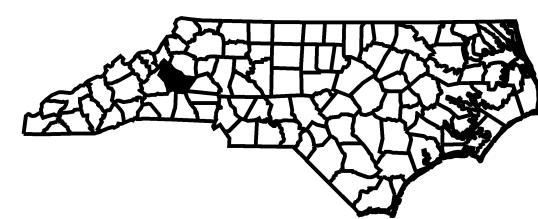
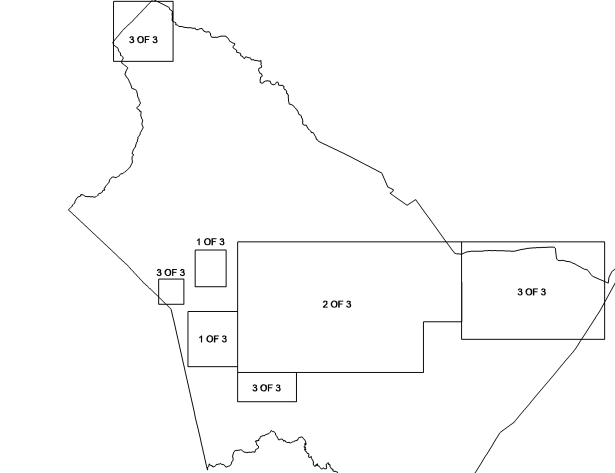
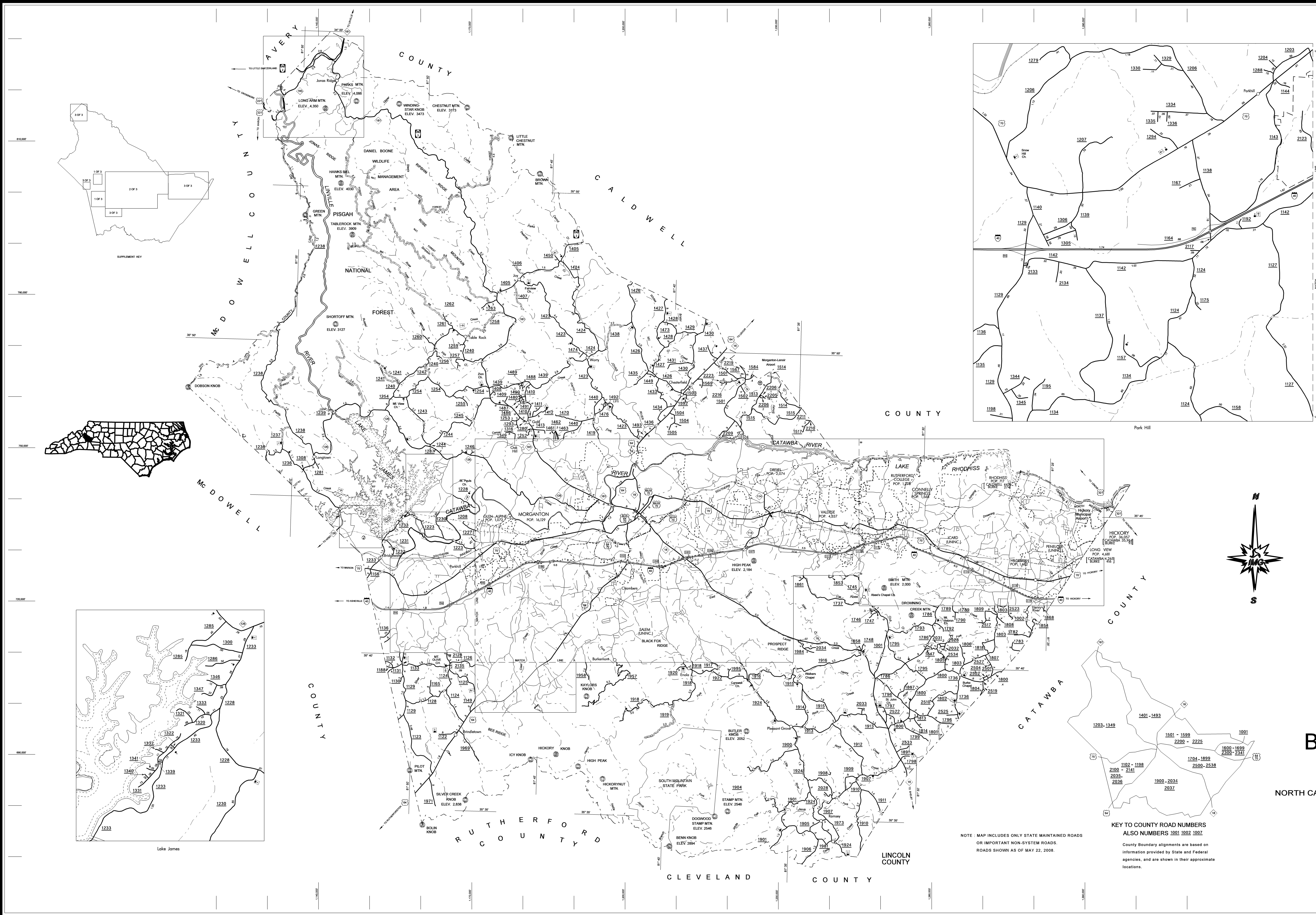


COPIES OF THIS MAP ARE AVAILABLE
TO THE PUBLIC AT A NOMINAL COST
ADDRESS:
N.C. DEPARTMENT OF TRANSPORTATION
SAND CARL SANDGARD, CT.
RALEIGH, N.C. 27601

REVISED
01/00/07 MRG
2/14/07 MRG
3/30/07 MRG
4/17/07 MG
6/20/07 MG
8/30/07 MG
8/16/07 MG
11/06/07 MG
2/4/08 MG
2/13/08 MG
2/29/08 MG
4/17/08 MG
4/22/08 MG
5/22/08 MG

BURKE



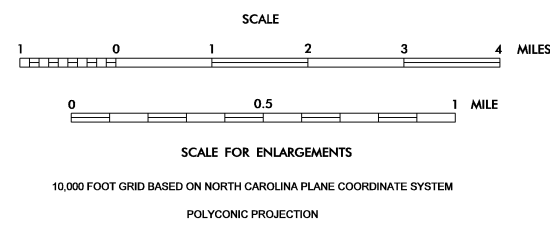
- LEGEND**
- PRIMITIVE OR UNIMPROVED ROAD
 - GRADED AND DRAINED ROAD
 - SOIL GRAVEL OR STONE SURFACED ROAD
 - HARD SURFACED ROAD
 - 4 LANE UNDIVIDED HIGHWAY
 - DIVIDED HIGHWAY
 - HIGHWAY WITH FRONTAGE ROADS
 - FCA
 - HS
 - FULL CONTROL ACCESS
 - NON-SYSTEM ROAD
 - PROJECTED LOCATION
 - INTERSECTION DISTANCE
 - TRAFFIC CIRCLE
 - HIGHWAY INTERCHANGE
 - DETAILED HIGHWAY INTERCHANGE
 - ROAD THROUGH MOUNTAIN PASS
 - HIGHWAY BRIDGE
 - UNDERPASS
 - OVERPASS
 - DRAW SPAN ON BRIDGE
 - HIGHWAY TUNNEL
 - FORD
 - INTERSTATE HIGHWAY
 - U.S. NUMBERED HIGHWAY
 - N.C. NUMBERED HIGHWAY
 - U.S. NUMBERED BICYCLE ROUTE
 - N.C. NUMBERED BICYCLE ROUTE
 - RAILROAD ANY NUMBER OF TRACKS USED BY SINGLE OPERATING COMPANY
 - RAILROAD ANY NUMBER OF TRACKS USED BY MORE THAN ONE OPERATING COMPANY ON SAME OR ADJACENT RIGHTS-OF-WAY
 - RAILROAD STATION
 - RAILROAD GRADE CROSSING
 - UNDERPASS
 - OVERPASS
 - RAILROAD TUNNEL
 - INSET AREA
 - URBAN EXTENSION
 - BOUNDARY LINE
 - CITY LIMIT
 - NATIONAL FOREST BOUNDARY
 - STATE FOREST BOUNDARY
 - FEDERAL GAMELAND BOUNDARY
 - STATE GAMELAND BOUNDARY
 - MILITARY RESERVATION BOUNDARY
 - COUNTY LINE
 - STATE LINE
 - INCORPORATED CITY OR VILLAGE, (GENERALIZED)
 - FREE OR TOLL FERRY
 - CANAL
 - NARROW STREAM
 - WIDE STREAM
 - DAM WITH LOCK
 - DAM
 - RESERVOIR, POND, OR LAKE
 - COMMUNITY AND TOWN CENTER
 - COUNTY SEAT
 - SCHOOL
 - COLLEGE OR UNIVERSITY
 - HOSPITAL
 - CHURCH
 - CHURCH WITH CEMETERY
 - CEMETERY
 - PATROL STATION
 - CORRECTIONAL OR PENAL INSTN.
 - HIGHWAY GARAGE OR MAINT. YARD
 - HIGHWAY DIV. OR DIST. OFFICE
 - WEIGHT STATION
 - MONUMENT SMALL HISTORICAL SITE
 - LIGHTHOUSE
 - MOUNTAIN PEAK
 - REST AREA
 - TRANSLATION STATION
 - COAST GUARD STATION
 - MILITARY AIRFIELD
 - COMMERCIAL OR MUNICIPAL FIELD
 - HANGAR ON FIELD
 - LANDING STRIP
 - MARKED AUXILIARY FIELD

BURKE COUNTY

NORTH CAROLINA

PREPARED BY THE
NORTH CAROLINA DEPARTMENT OF TRANSPORTATION
INFORMATION TECHNOLOGY - IMG UNIT

IN COOPERATION WITH THE
U.S. DEPARTMENT OF TRANSPORTATION
FEDERAL HIGHWAY ADMINISTRATION



NOTE: MAP INCLUDES ONLY STATE MAINTAINED ROADS
OR IMPORTANT NON-SYSTEM ROADS.
ROADS SHOWN AS OF MAY 22, 2008.

KEY TO COUNTY ROAD NUMBERS
ALSO NUMBERS 1001 1002 1007
County Boundary alignments are based on
information provided by State and Federal
agencies, and are shown in their approximate
locations.