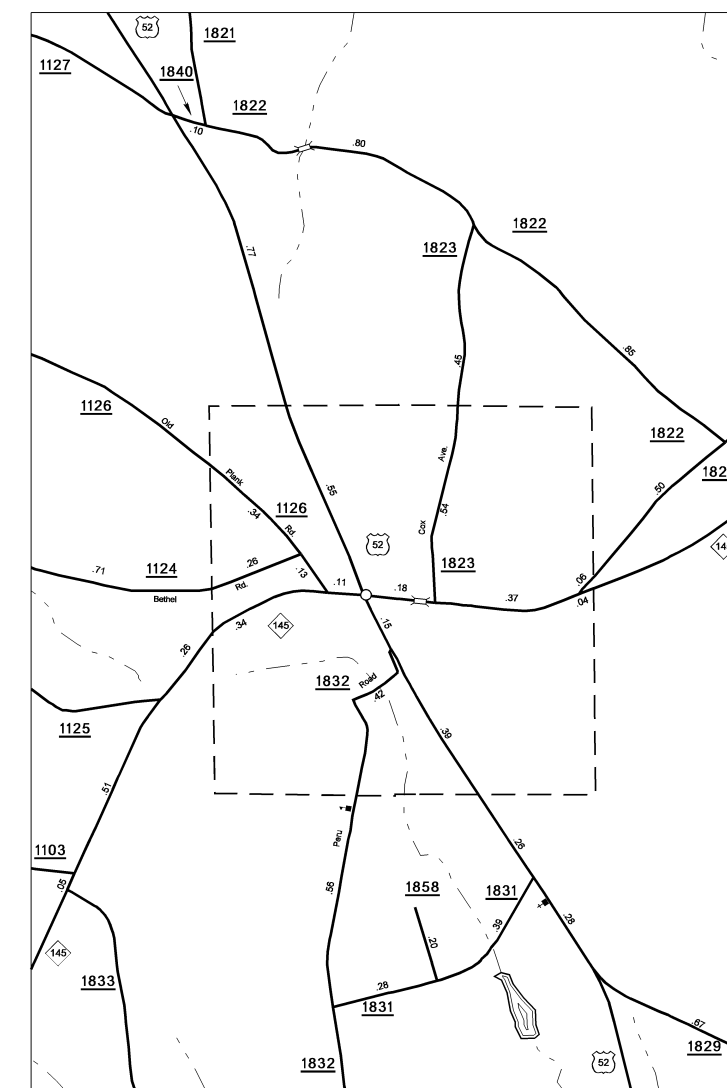
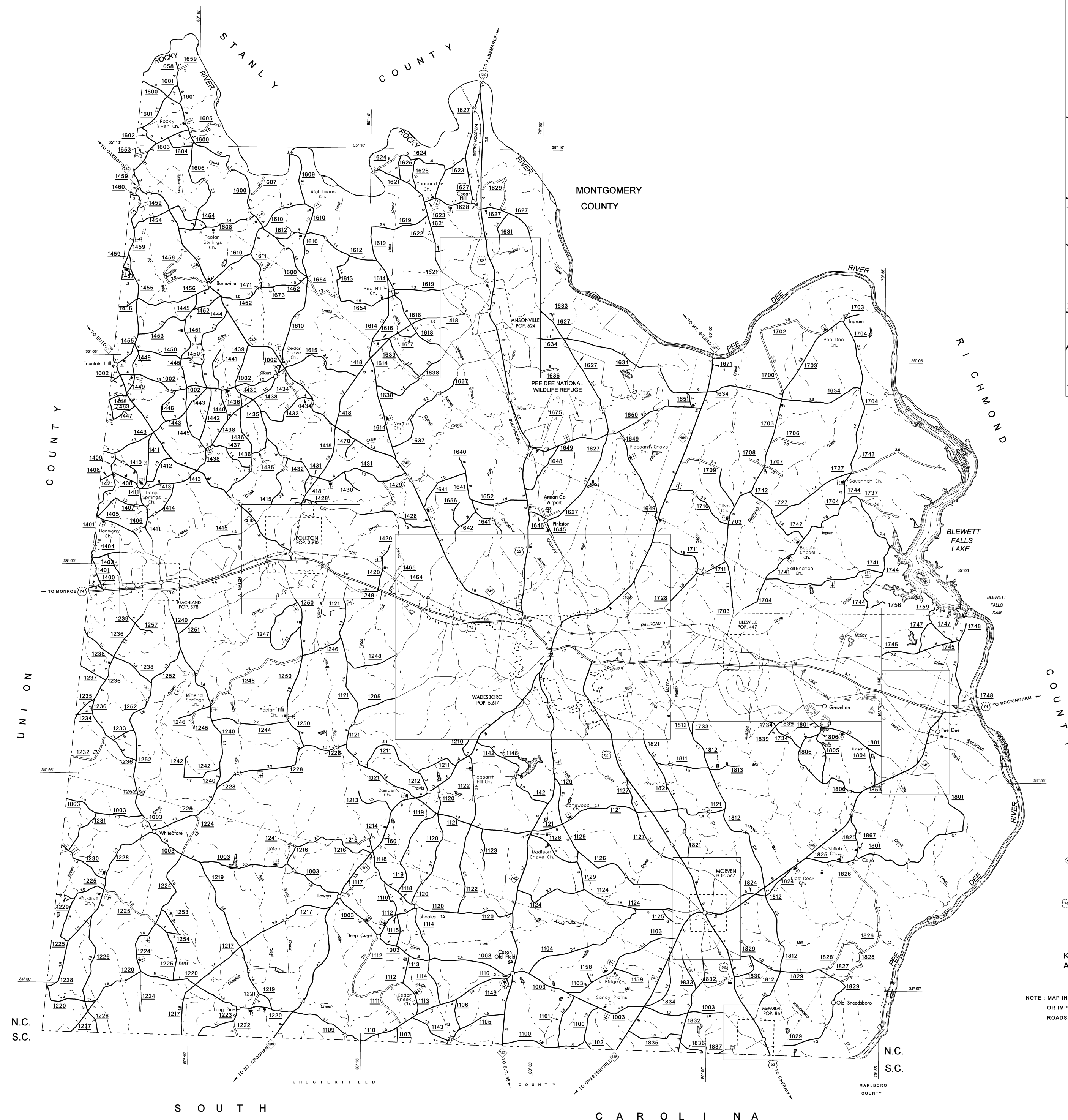
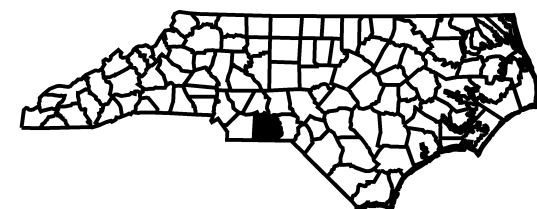
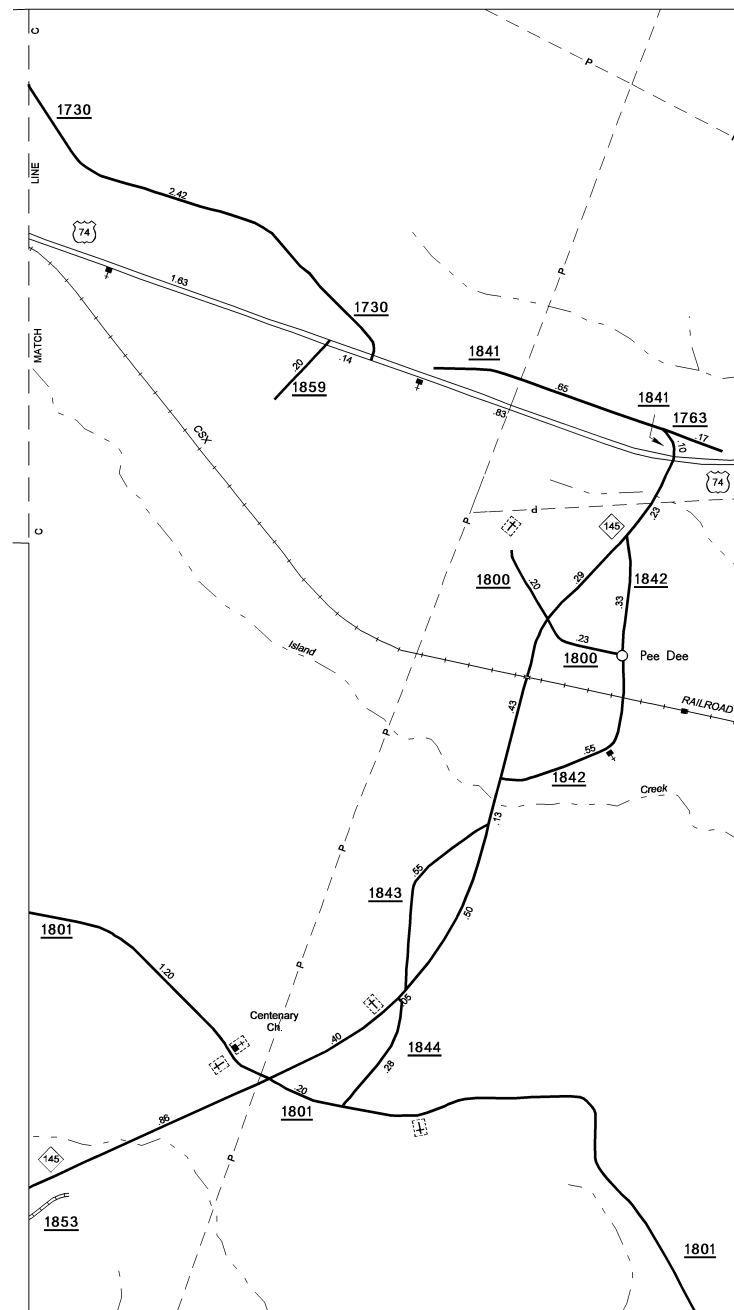
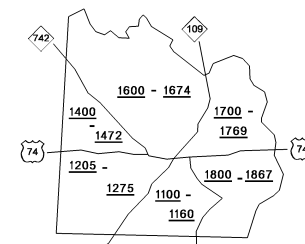
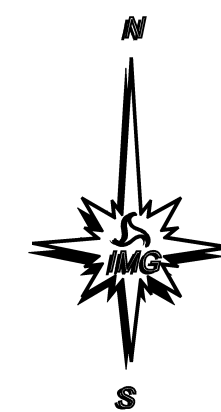
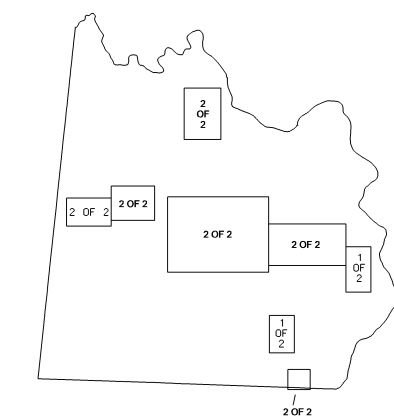


COPIES OF THIS MAP ARE AVAILABLE  
TO THE PUBLIC AT A NOMINAL COST  
ADDRESS:  
N.C. DEPARTMENT OF TRANSPORTATION  
INFORMATION SERVICES  
3401 CARL SANDERS BLVD.  
RALEIGH, N.C. 27603

ANSON  
REVISED  
1/1/2000  
1/8/02  
3/20/03  
5/2/03 YRT  
5/12/04 YRT  
5/31/05 YRT  
2/9/06 MEM  
10/20/06 MEM  
5/3/07 MEM  
10/6/07 MEM  
12/28/07 MEM  
4/14/08 MEM  
5/9/08 MEM



County Boundary alignments are based on  
information provided by State and Federal  
agencies, and are shown in their approximate  
locations.



KEY TO COUNTY ROAD NUMBERS  
ALSO NUMBERS 1002 - 1093

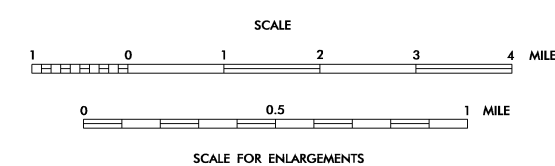
NOTE: MAP INCLUDES ONLY STATE MAINTAINED ROADS  
OR IMPORTANT NON-SYSTEM ROADS.  
ROADS SHOWN AS OF AUG. 8, 2008

# ANSON COUNTY

## NORTH CAROLINA

PREPARED BY THE  
NORTH CAROLINA DEPARTMENT OF TRANSPORTATION  
INFORMATION TECHNOLOGY - IMG UNIT

IN COOPERATION WITH THE  
U.S. DEPARTMENT OF TRANSPORTATION  
FEDERAL HIGHWAY ADMINISTRATION



SCALE FOR ENLARGEMENTS

10,000 FOOT GRID BASED ON NORTH CAROLINA PLANE COORDINATE SYSTEM

POLYCONIC PROJECTION