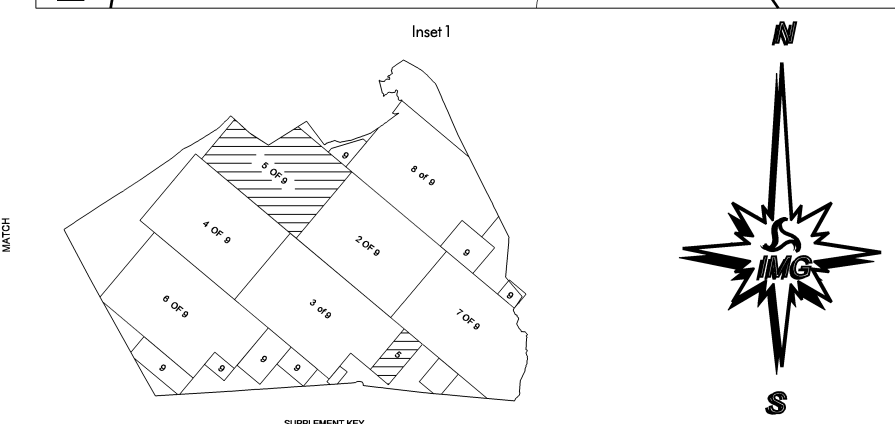
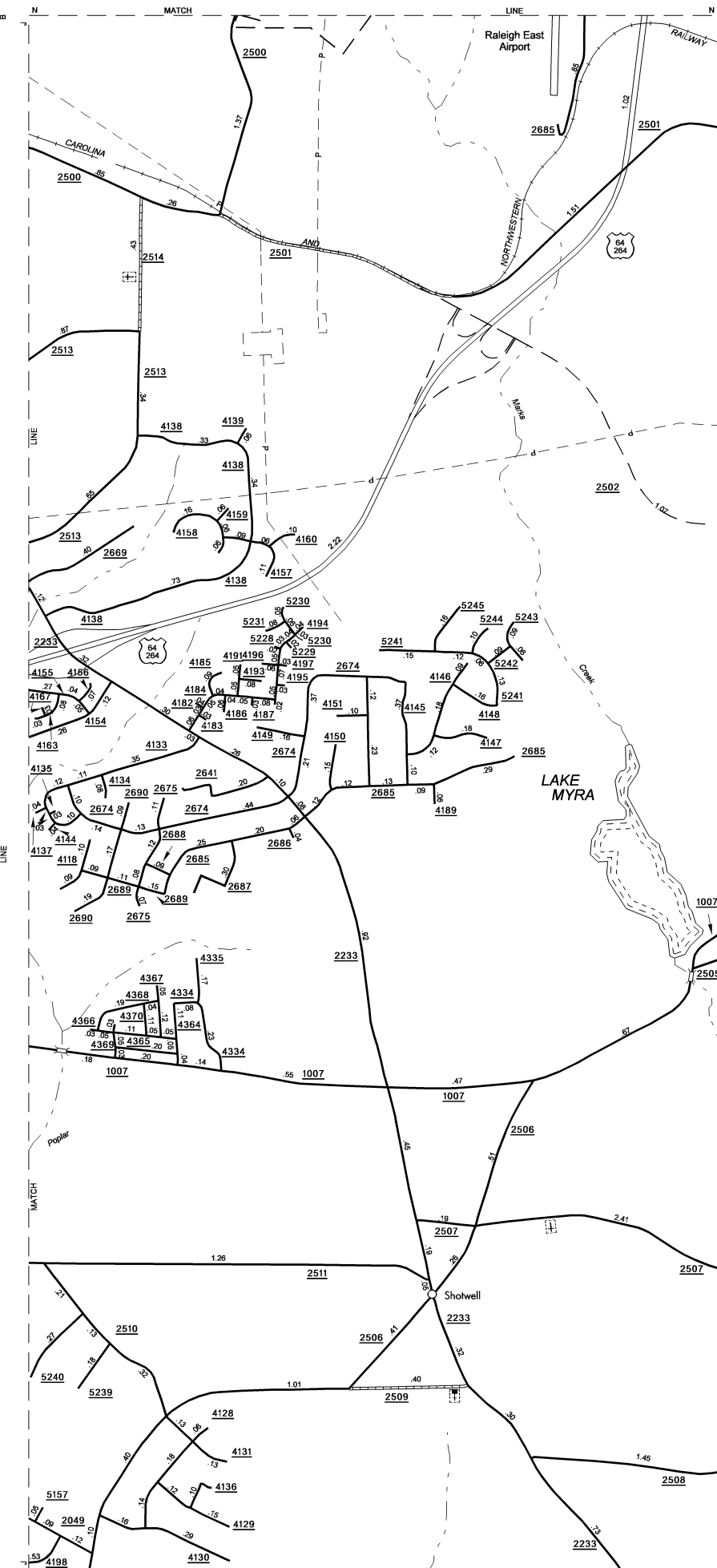


COPIES OF THIS MAP ARE AVAILABLE
TO THE PUBLIC AT A NOMINAL COST
ADDRESS:
N.C. DEPARTMENT OF TRANSPORTATION
INFORMATION SERVICES
3401 CARL SANDERS BLVD.
RALEIGH, N.C. 27603

REVISED
12/01/04 RLN
2/11/05 RLN
11/18/05 RLN
4/11/06 MEM
11/06/06 MEM
1/17/07 MEM
2/14/07 MEM
3/21/07 MEM
4/24/07 MEM
5/4/07 MEM
6/5/07 MEM
7/23/07 MEM



ENLARGED MUNICIPAL AND SUBURBAN AREAS

WAKE COUNTY

NORTH CAROLINA

PREPARED BY THE
NORTH CAROLINA DEPARTMENT OF TRANSPORTATION
INFORMATION TECHNOLOGY - IMG UNIT

IN COOPERATION WITH THE
U.S. DEPARTMENT OF TRANSPORTATION
FEDERAL HIGHWAY ADMINISTRATION

SCALE
0 1 MILE

10,000 FOOT GRID BASED ON NORTH CAROLINA PLANE COORDINATE SYSTEM
POLYCONIC PROJECTION

SHEET 5 OF 9