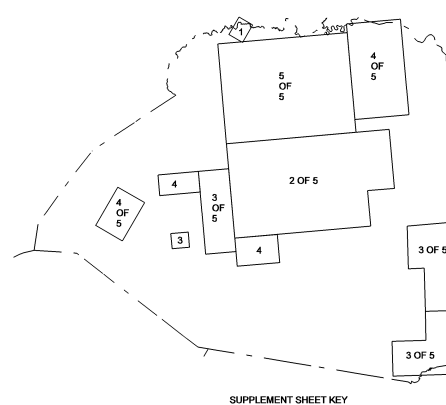
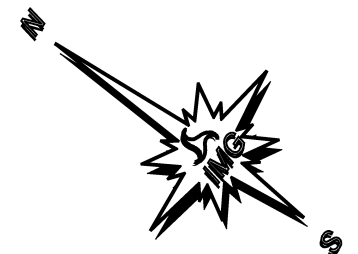
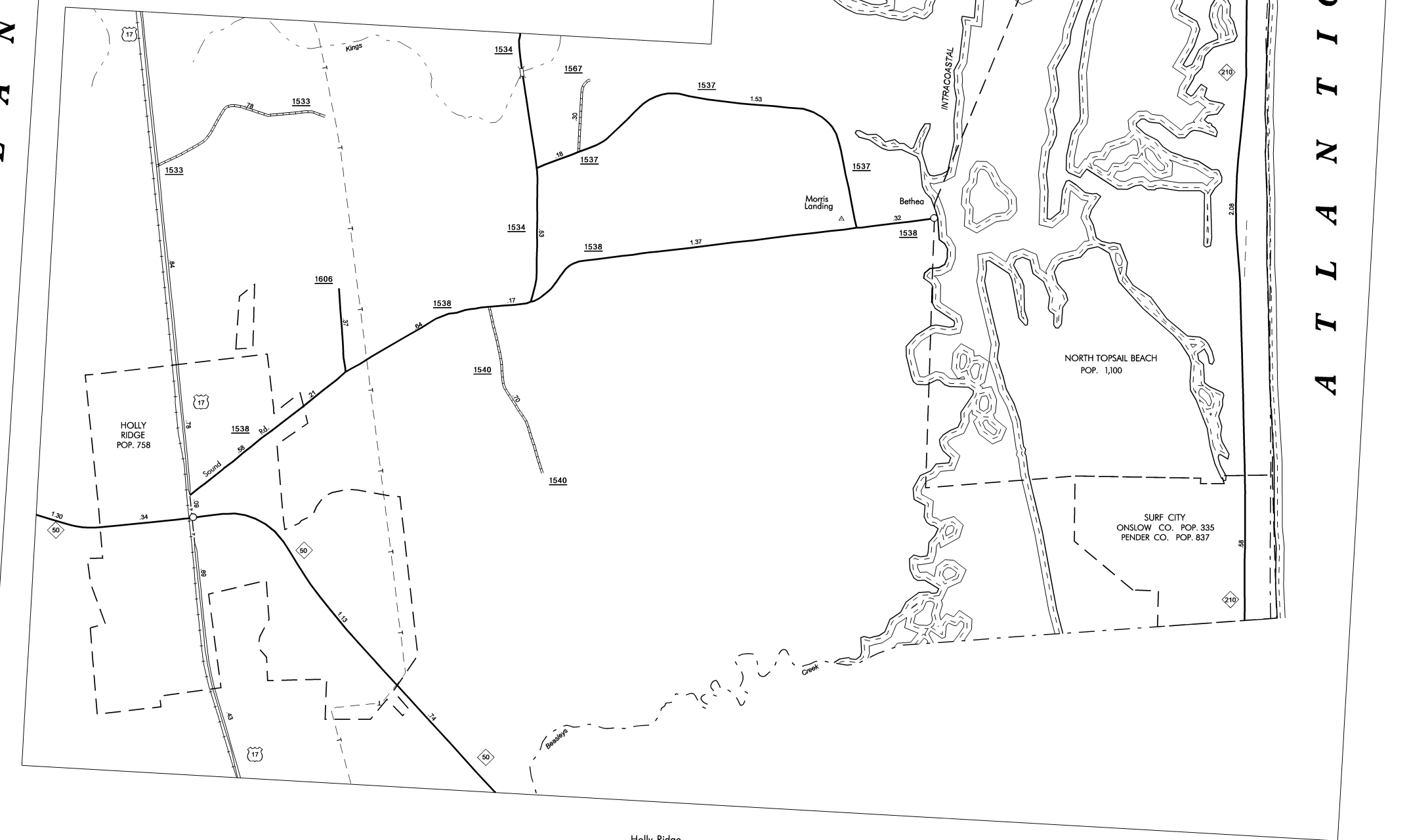
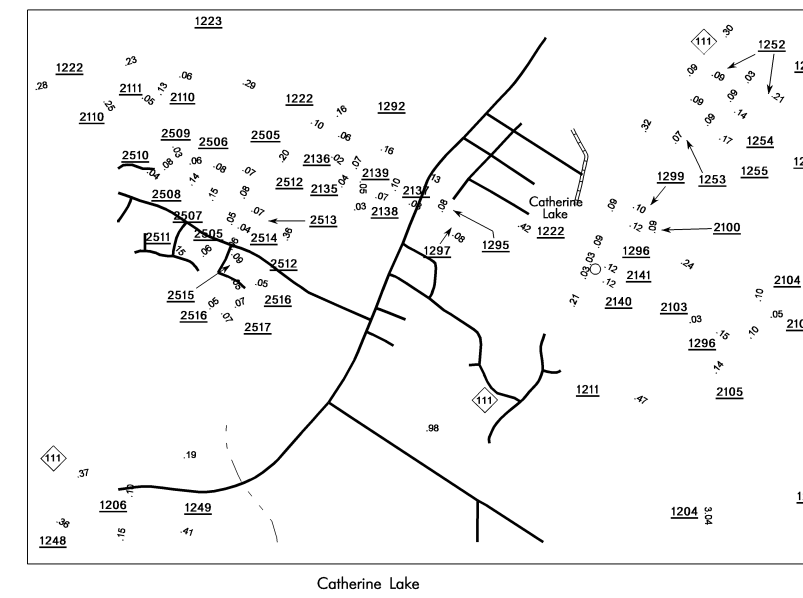
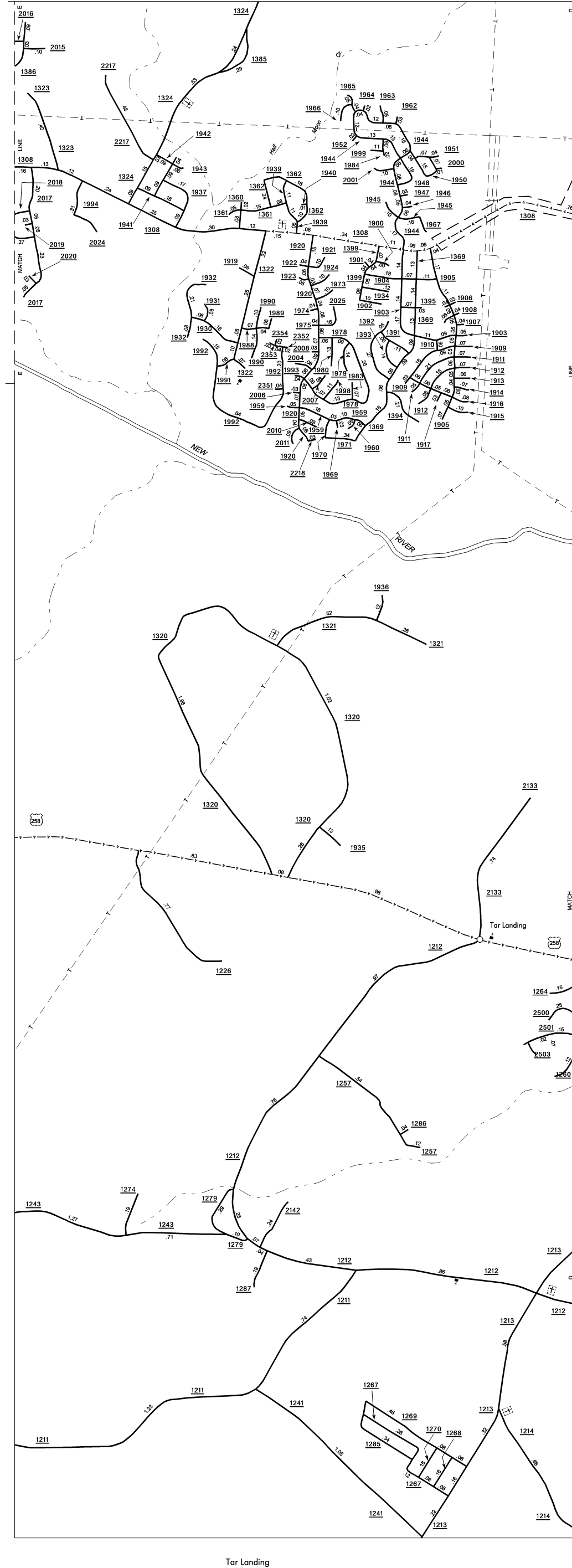
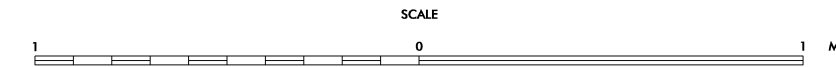


COPIES OF THIS MAP ARE AVAILABLE TO THE PUBLIC AT A NOMINAL COST ADDRESS: N.C. DEPARTMENT OF TRANSPORTATION 3401 CARL SANDERS CT. RALEIGH, N.C. 27610

REVISED 3/8/02 MEM 7/8/02 MEM 7/31/02 MEM 9/3/03 RLN 6/16/04 BCH 7/14/04 BCH 1/25/05 BCH 10/31/05 BCH 3/1/06 BCH 11/22/06 BCH 2/26/07 BCH 4/30/07 BCH 6/11/07 BCH 8/6/07 BCH



ENLARGED MUNICIPAL AND SUBURBAN AREAS  
**ONSLOW COUNTY**  
NORTH CAROLINA  
PREPARED BY THE  
NORTH CAROLINA DEPARTMENT OF TRANSPORTATION  
INFORMATION TECHNOLOGY - IMG UNIT  
IN COOPERATION WITH THE  
U.S. DEPARTMENT OF TRANSPORTATION  
FEDERAL HIGHWAY ADMINISTRATION



10,000 FOOT GRID BASED ON NORTH CAROLINA PLANE COORDINATE SYSTEM  
POLYCONIC PROJECTION