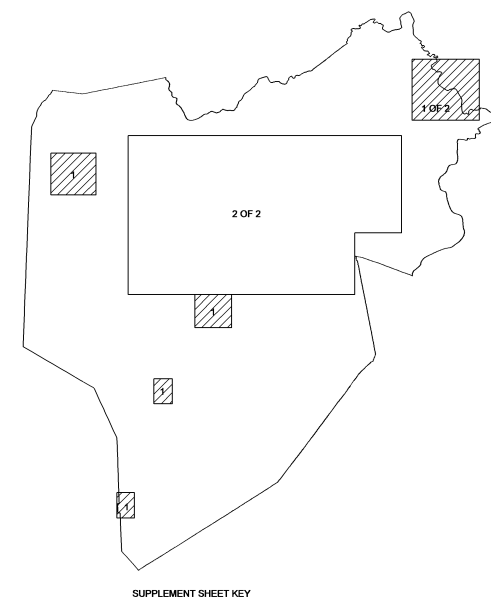
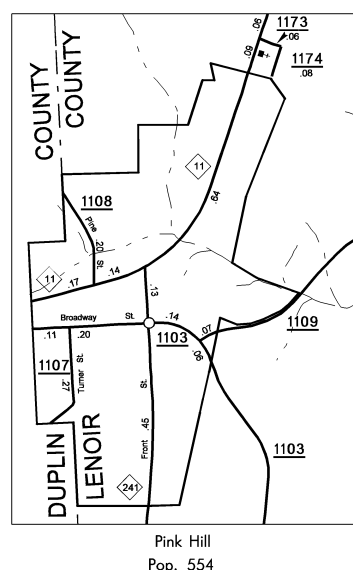
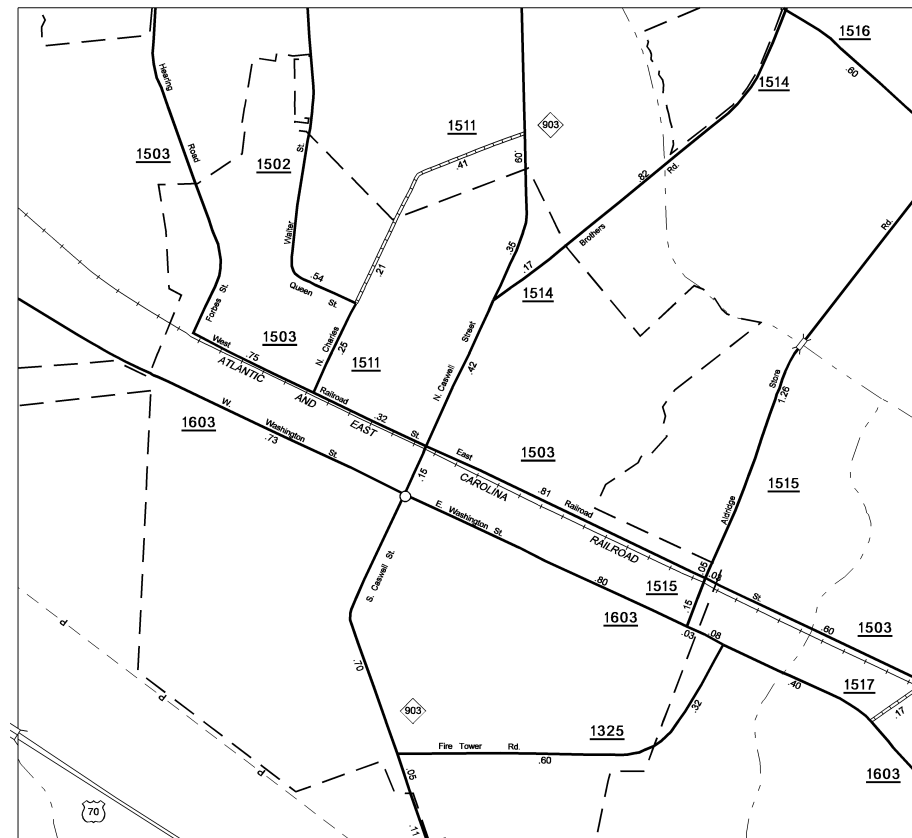
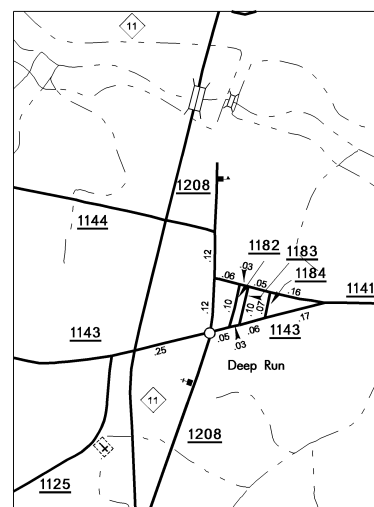
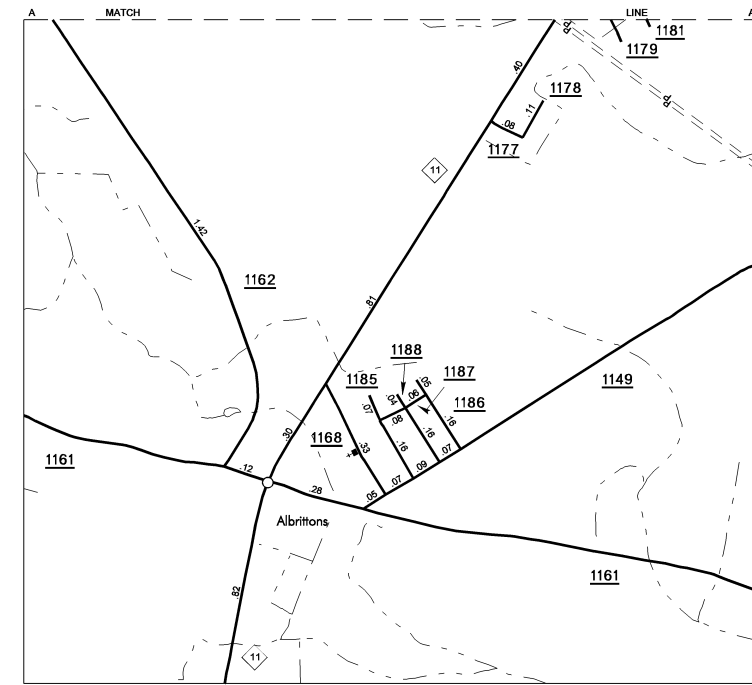


COPIES OF THIS MAP ARE AVAILABLE  
TO THE PUBLIC AT A NOMINAL COST  
ADDRESS:  
N.C. DEPARTMENT OF TRANSPORTATION  
PLANNING AND SERVICES UNIT  
3401 CARR SANDBURG CT.  
RALEIGH, N.C. 27603

REVISED  
3/12/92 MSG  
3/91/93 BCS  
8/20/93 MSG  
12/11/93 MSG  
5/11/94 MSG  
9/30/94 MSG  
12/15/94 RLN  
2/8/95 MSG  
3/3/95 MEG  
7/30/95 MEG  
8/3/96 MEG  
10/17/96 MEG  
11/29/96 MEG

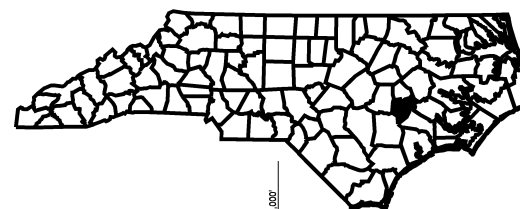
LENOIR



SUPPLEMENT SHEET KEY



County boundary alignments are based on  
information provided by State and Federal  
agencies, and are shown in their approximate  
locations.



NOTE: MAP INCLUDES ONLY STATE MAINTAINED ROADS  
OR IMPORTANT NON-SYSTEM ROADS.  
ROADS SHOWN AS OF NOV. 29, 2006.

KEY TO COUNTY ROAD NUMBERS  
ALSO NUMBERS  
1001 1003 1004 1005 1006

# LENOIR COUNTY

## NORTH CAROLINA

PREPARED BY THE  
NORTH CAROLINA DEPARTMENT OF TRANSPORTATION  
INFORMATION TECHNOLOGY - IMG UNIT  
IN COOPERATION WITH THE  
U.S. DEPARTMENT OF TRANSPORTATION  
FEDERAL HIGHWAY ADMINISTRATION

SCALE  
1 0 1 2 3 4 MILES  
0 0.5 1 MILE

SCALE FOR ENLARGEMENTS  
10,000 FOOT GRID BASED ON NORTH CAROLINA PLANE COORDINATE SYSTEM  
POLYCONIC PROJECTION

SHEET 1 OF 2