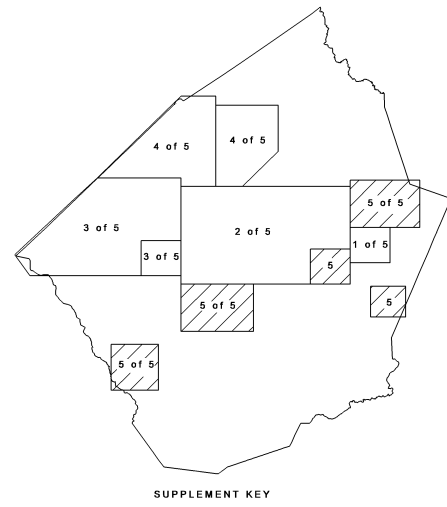
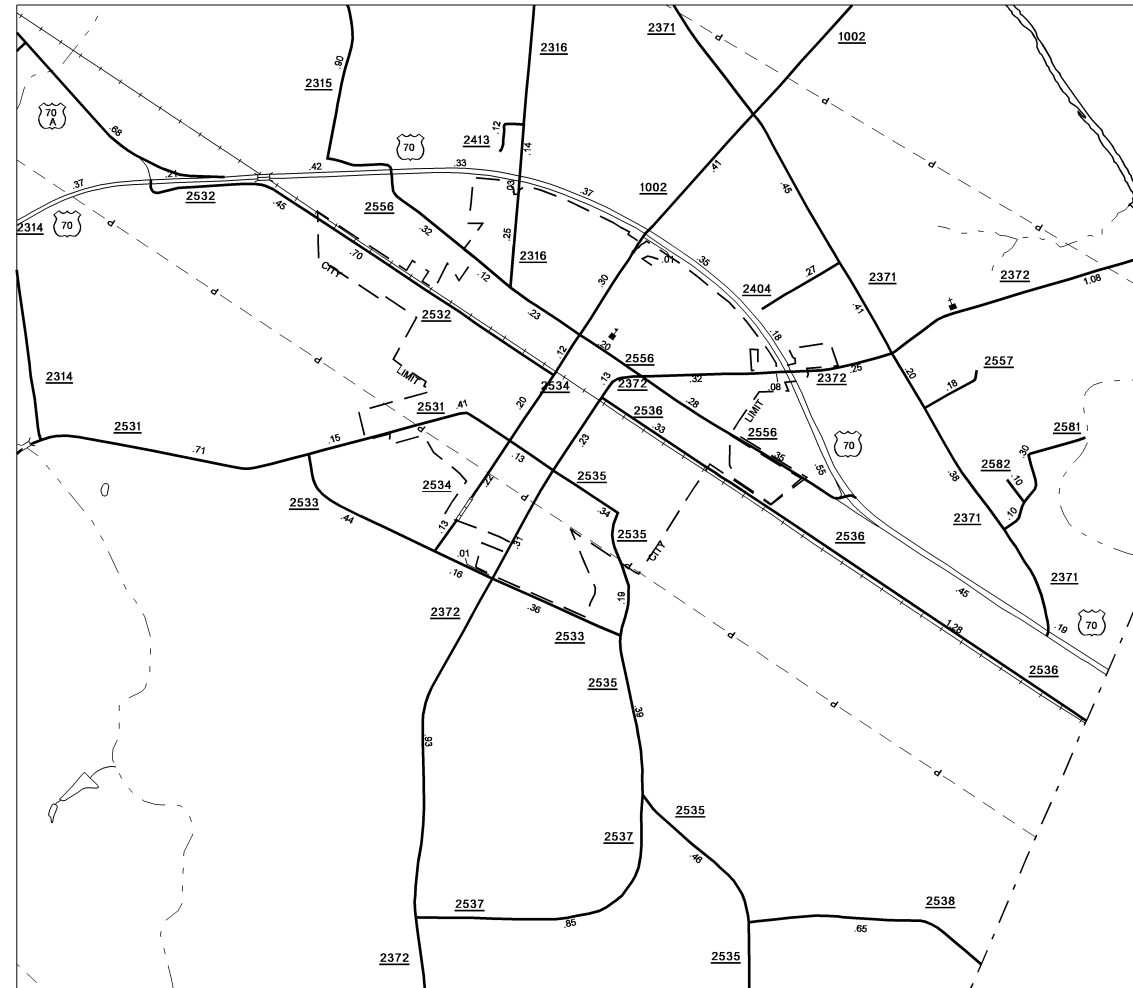
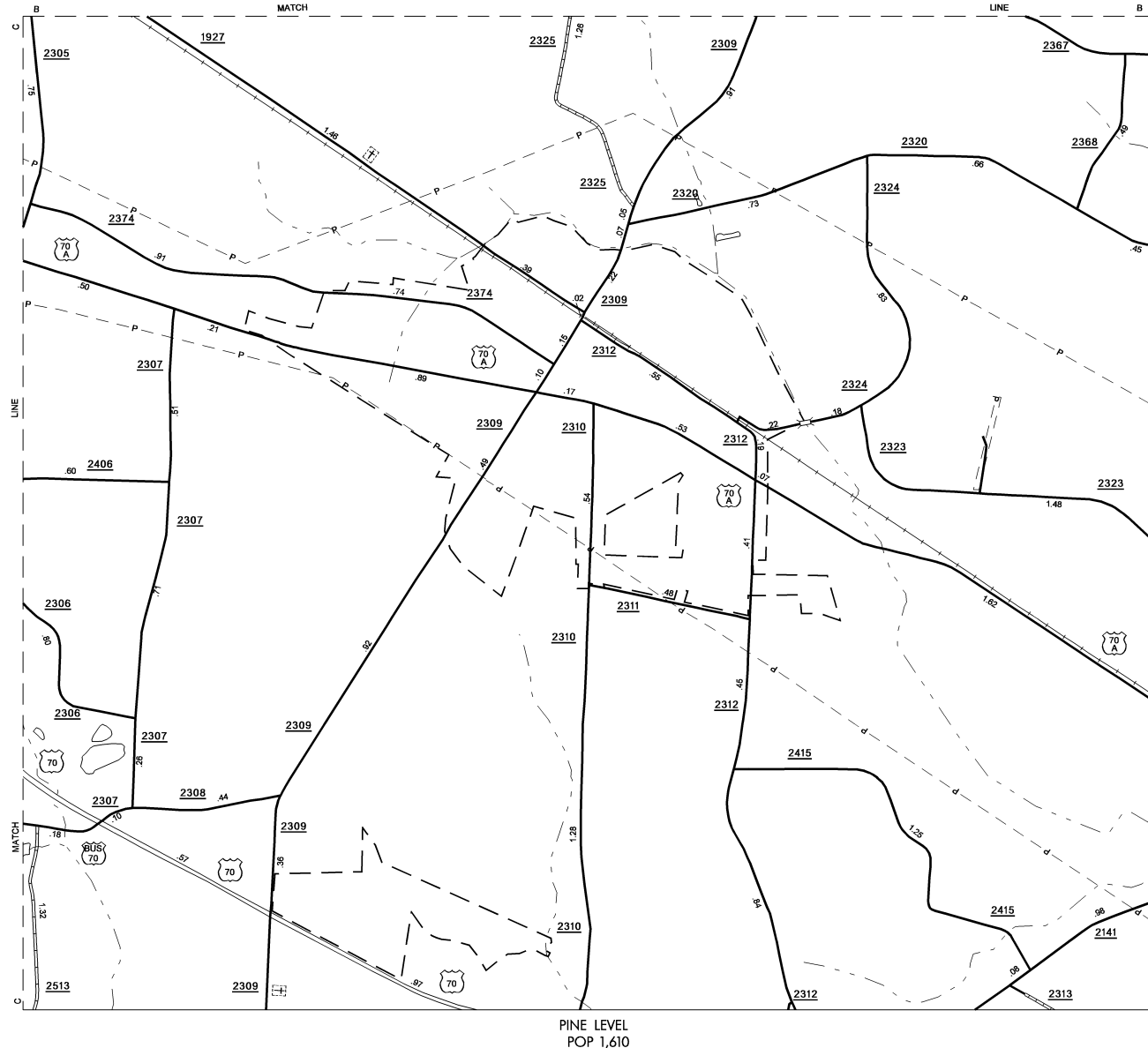


COPIES OF THIS MAP ARE AVAILABLE
TO THE PUBLIC AT A NOMINAL COST
ADDRESS:
N.C. DEPARTMENT OF TRANSPORTATION
INFORMATION TECHNOLOGY DIVISION
3401 CHASE DRIVE, SUITE 200
RALEIGH, NC 27603

REVISED
12/16/04 TRP
3/7/05 TRP
6/16/06 BDG
10/24/06 BDG
11/29/06 BDG
1/25/07 BDG
2/13/07 BDG
7/31/07 BDG



ENLARGED MUNICIPAL AND SUBURBAN AREAS
JOHNSTON COUNTY
NORTH CAROLINA
PREPARED BY THE
NORTH CAROLINA DEPARTMENT OF TRANSPORTATION
INFORMATION TECHNOLOGY - IMG UNIT
IN COOPERATION WITH THE
U.S. DEPARTMENT OF TRANSPORTATION
FEDERAL HIGHWAY ADMINISTRATION

