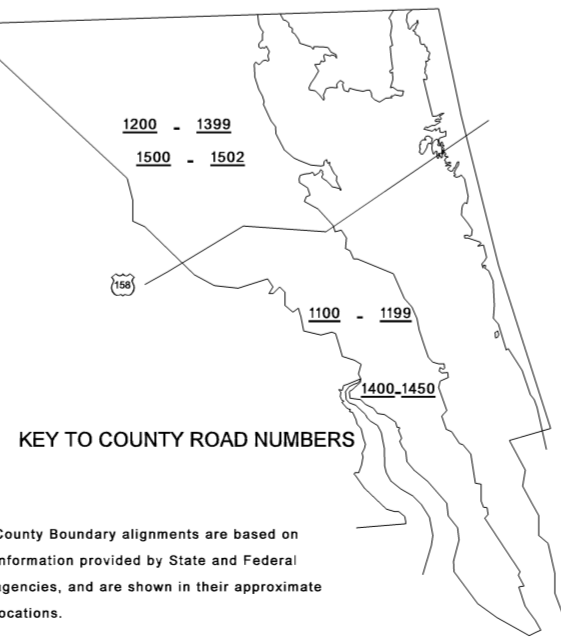
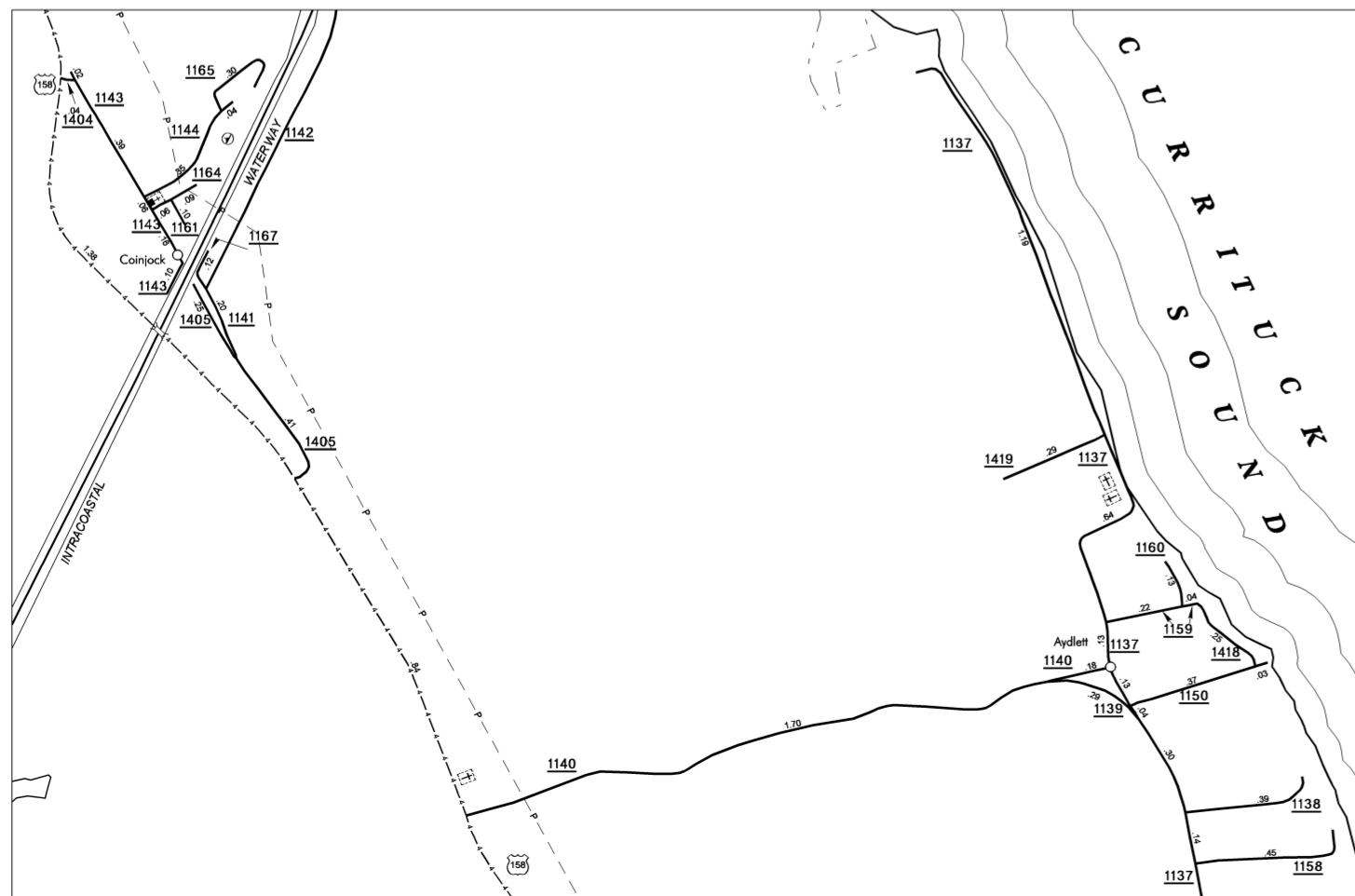
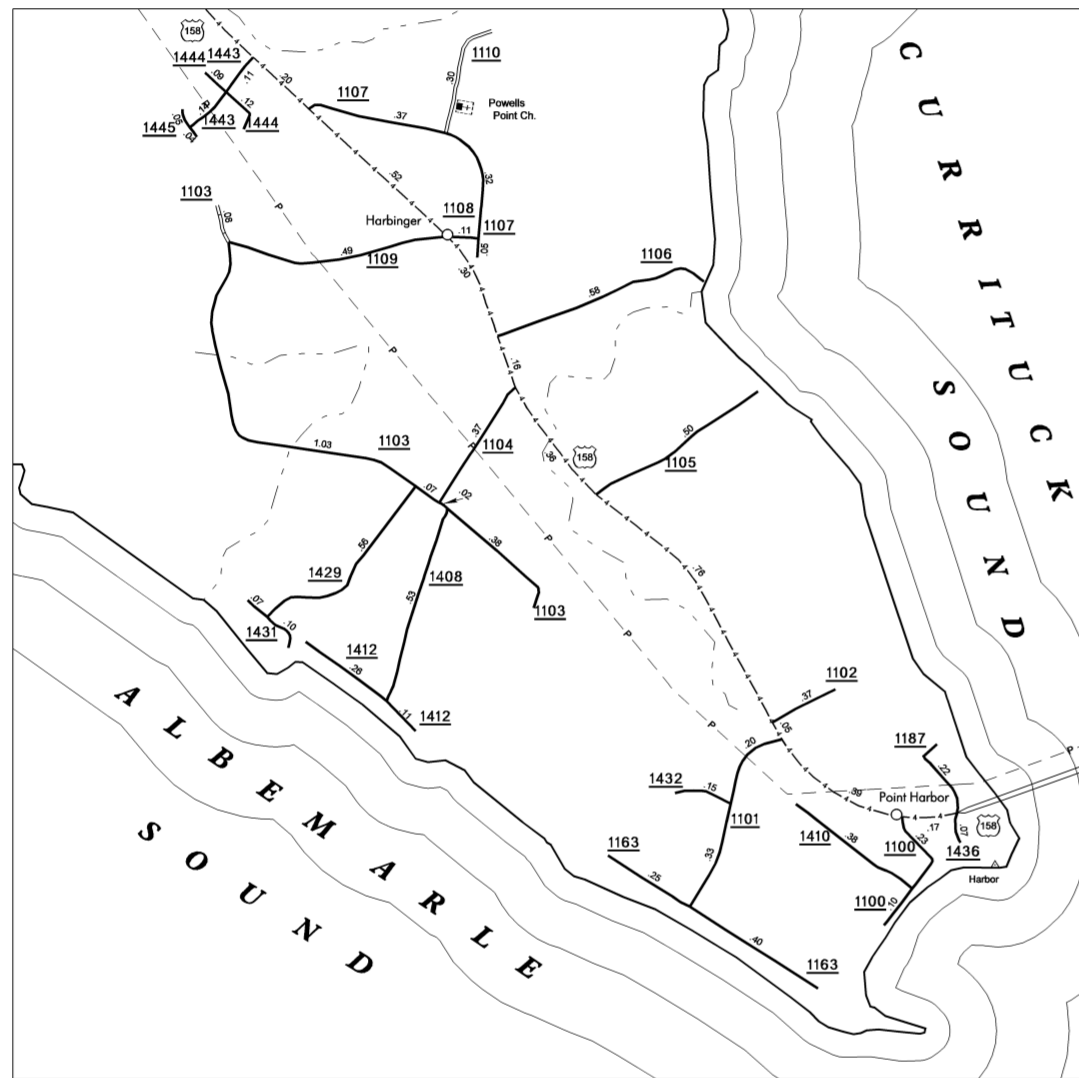
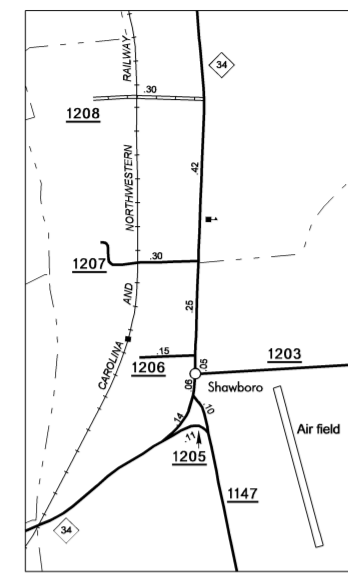


COPIES OF THIS MAP ARE AVAILABLE
TO THE PUBLIC AT A NOMINAL COST
ADDRESS:
N.C. DEPARTMENT OF TRANSPORTATION
INFORMATION SERVICES
3401 CARR SANDBOROUGH CT.
RALEIGH, N.C. 27603

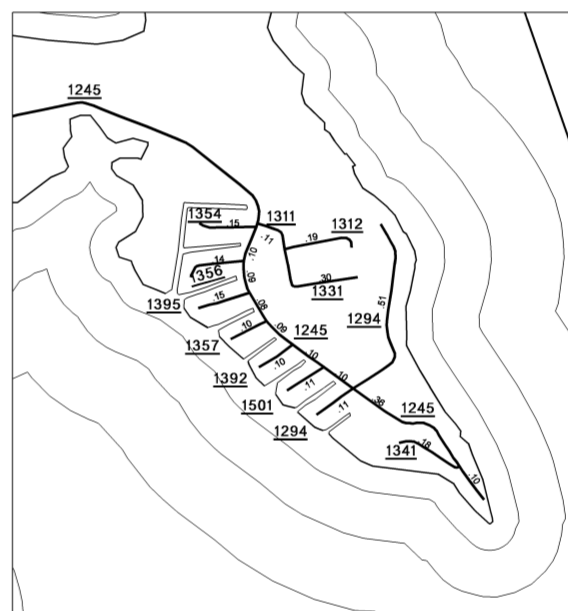
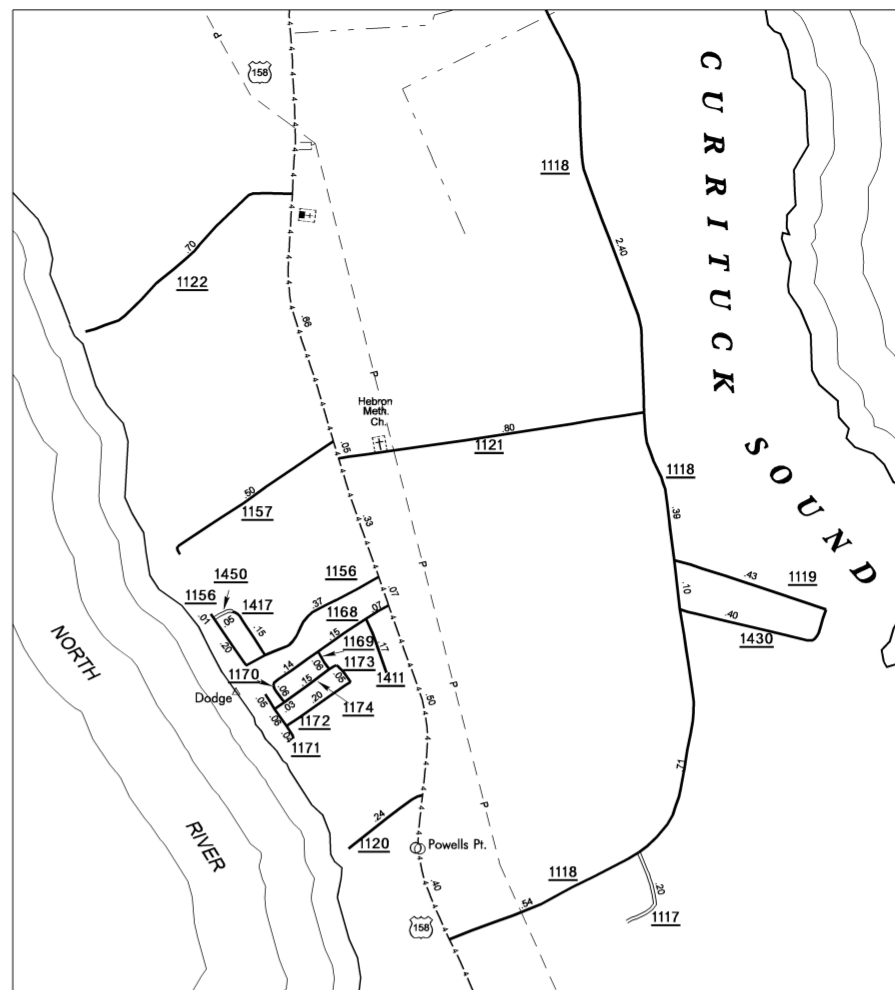
REVISED
11/1/02 MSG
6/19/02 MSG
2/27/03 MSG
3/17/03 MSG
8/19/03 MSG
5/1/04 MSG
10/22/04 MSG
5/1/04 MSG
6/30/04 MSG
1/25/05 MSG
6/26/05 BKG
10/31/06 ELO

CURRITUCK



KEY TO COUNTY ROAD NUMBERS

County Boundary alignments are based on
information provided by State and Federal
agencies, and are shown in their approximate
locations.

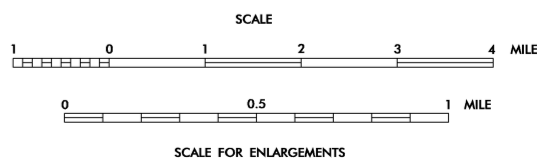


CURRITUCK COUNTY

NORTH CAROLINA

PREPARED BY THE
NORTH CAROLINA DEPARTMENT OF TRANSPORTATION
INFORMATION TECHNOLOGY - IMG UNIT

IN COOPERATION WITH THE
U.S. DEPARTMENT OF TRANSPORTATION
FEDERAL HIGHWAY ADMINISTRATION



NOTE: MAP INCLUDES ONLY STATE MAINTAINED ROADS
OR IMPORTANT NON-SYSTEM ROADS.
ROADS SHOWN AS OF OCT. 31, 2006

10,000 FOOT GRID BASED ON NORTH CAROLINA PLANE COORDINATE SYSTEM
POLYCONIC PROJECTION

SHEET 1 OF 2

DISTRICT 1 CURRITUCK COUNTY

NORTH CAROLINA 053