

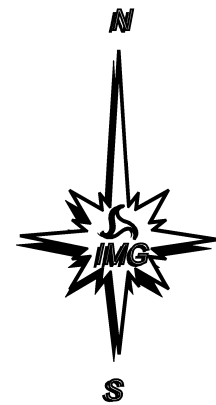
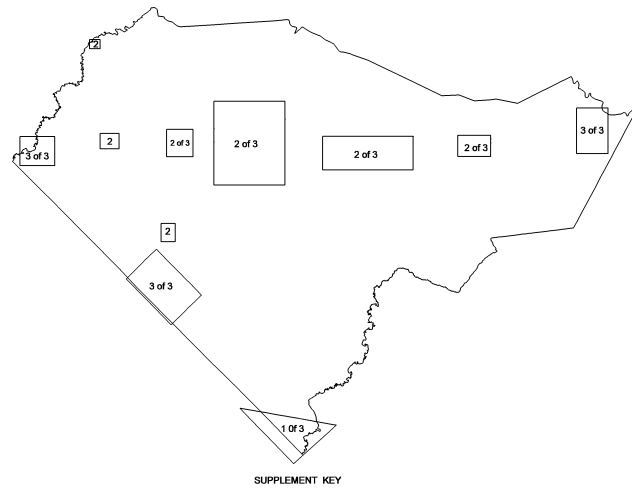
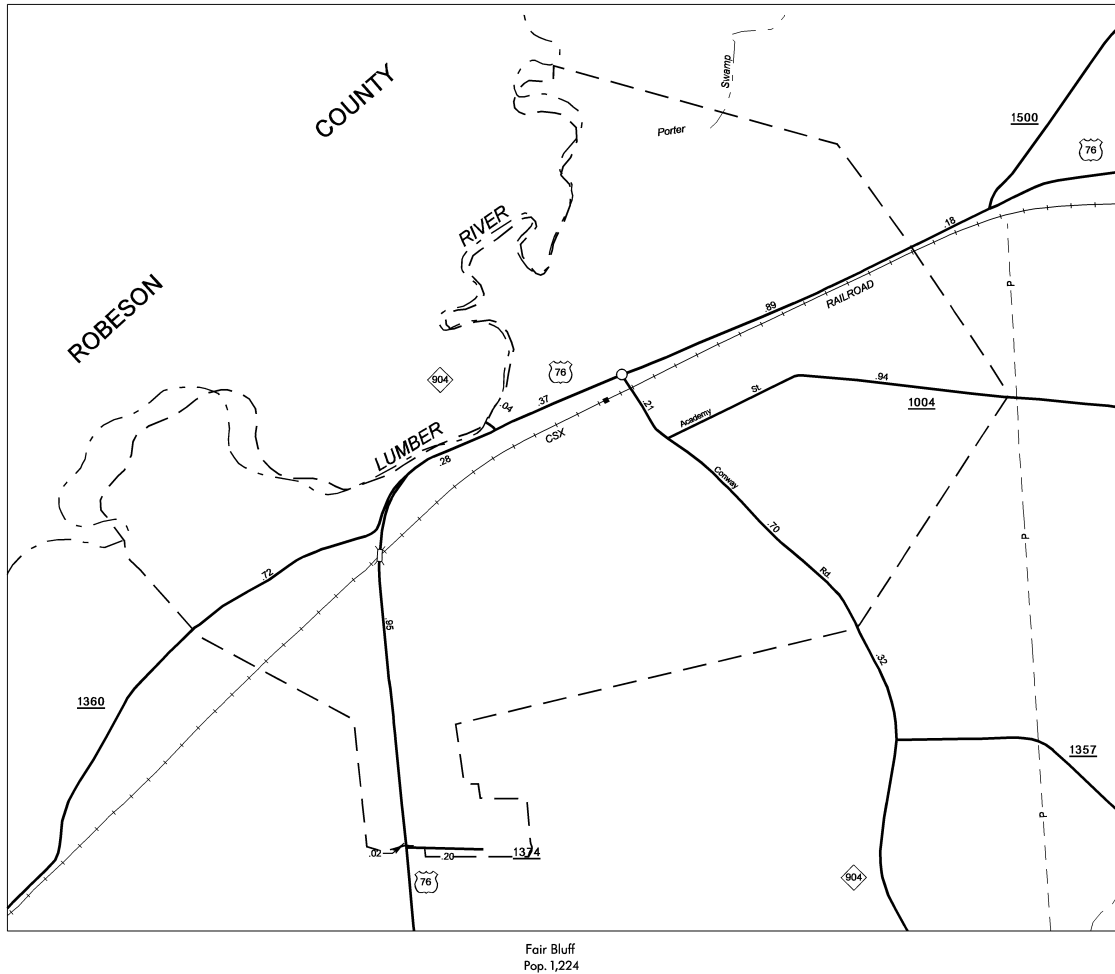
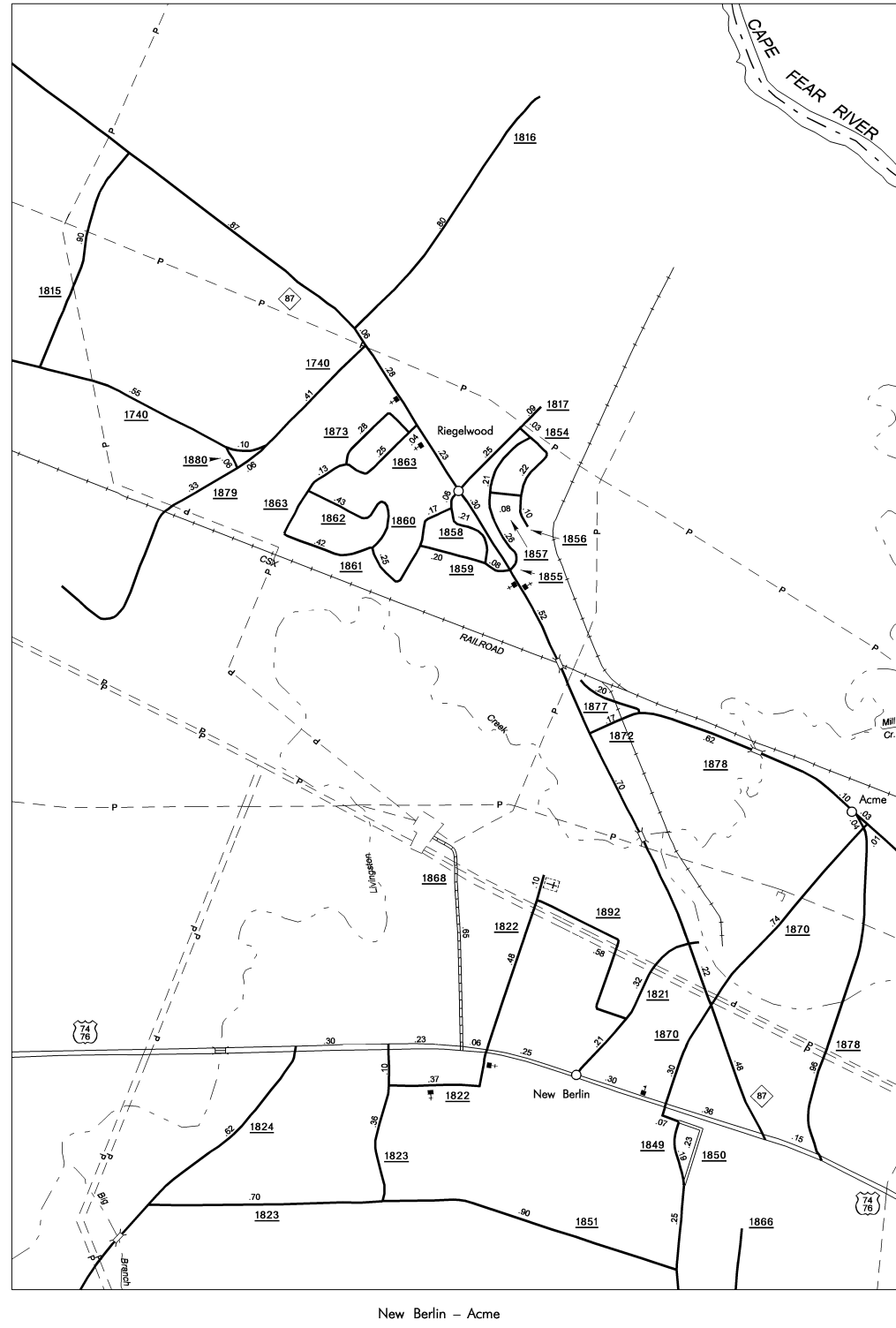
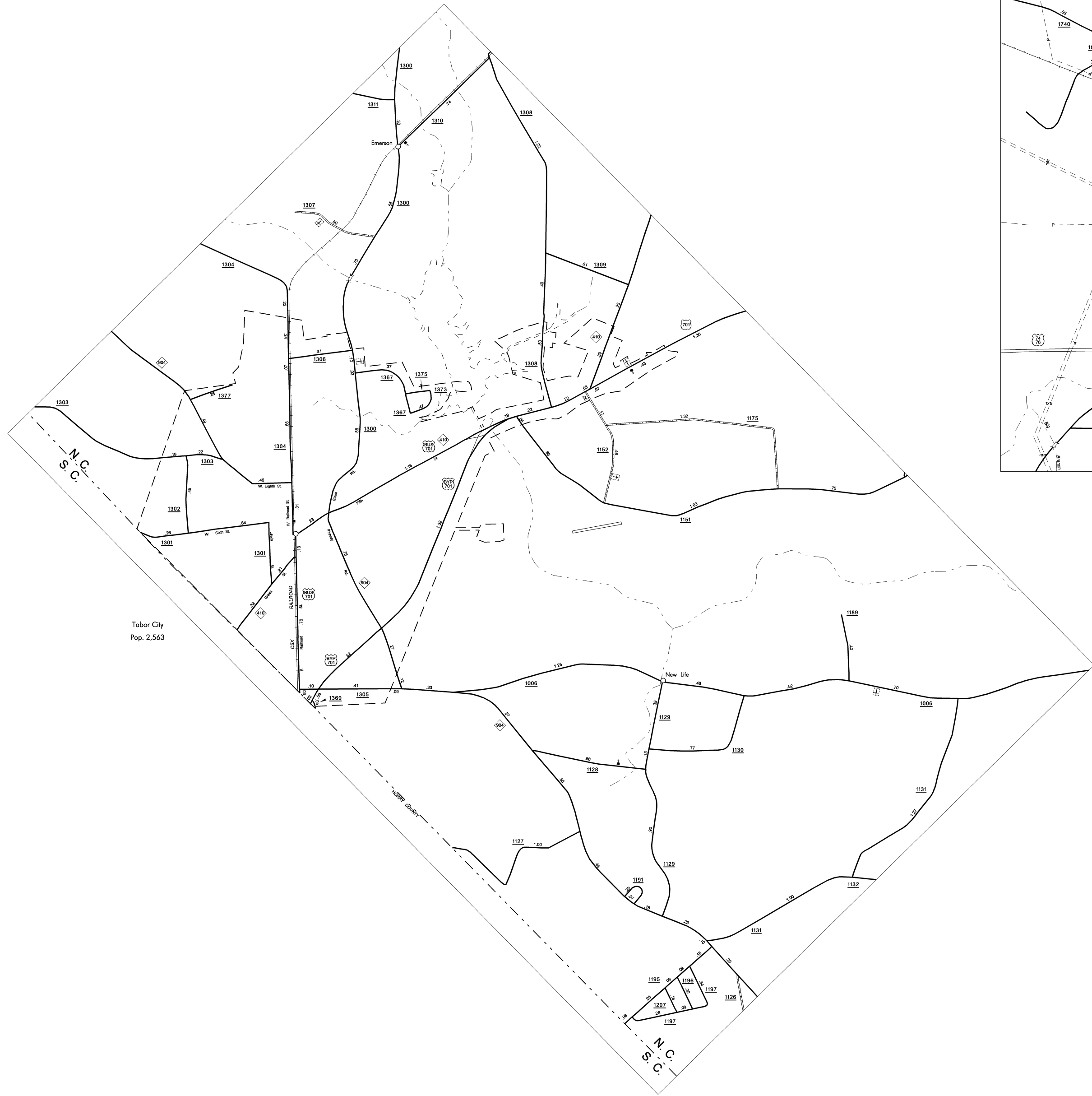
COLUMBUS

SUP 2

COPIES OF THIS MAP ARE AVAILABLE
TO THE PUBLIC AT A NOMINAL COST

ADDRESS
N.C. DEPARTMENT OF TRANSPORTATION
1502406 JMB
3401 CARI SANDHURST CT
RALEIGH, N.C. 27603

REVISED
1/26/05 RLK
6/30/05 MAG
9/1/06 JMB
10/24/06 JMB
2/5/07 JMB
5/11/07 JMB



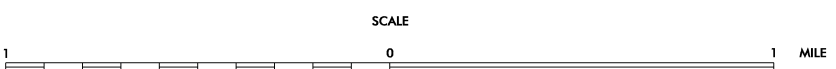
ENLARGED MUNICIPAL AND SUBURBAN AREAS

COLUMBUS COUNTY

NORTH CAROLINA

PREPARED BY THE
NORTH CAROLINA DEPARTMENT OF TRANSPORTATION
INFORMATION TECHNOLOGY - IMG UNIT

IN COOPERATION WITH THE
U.S. DEPARTMENT OF TRANSPORTATION
FEDERAL HIGHWAY ADMINISTRATION



10,000 FOOT GRID BASED ON NORTH CAROLINA PLANE COORDINATE SYSTEM
POLYCONIC PROJECTION