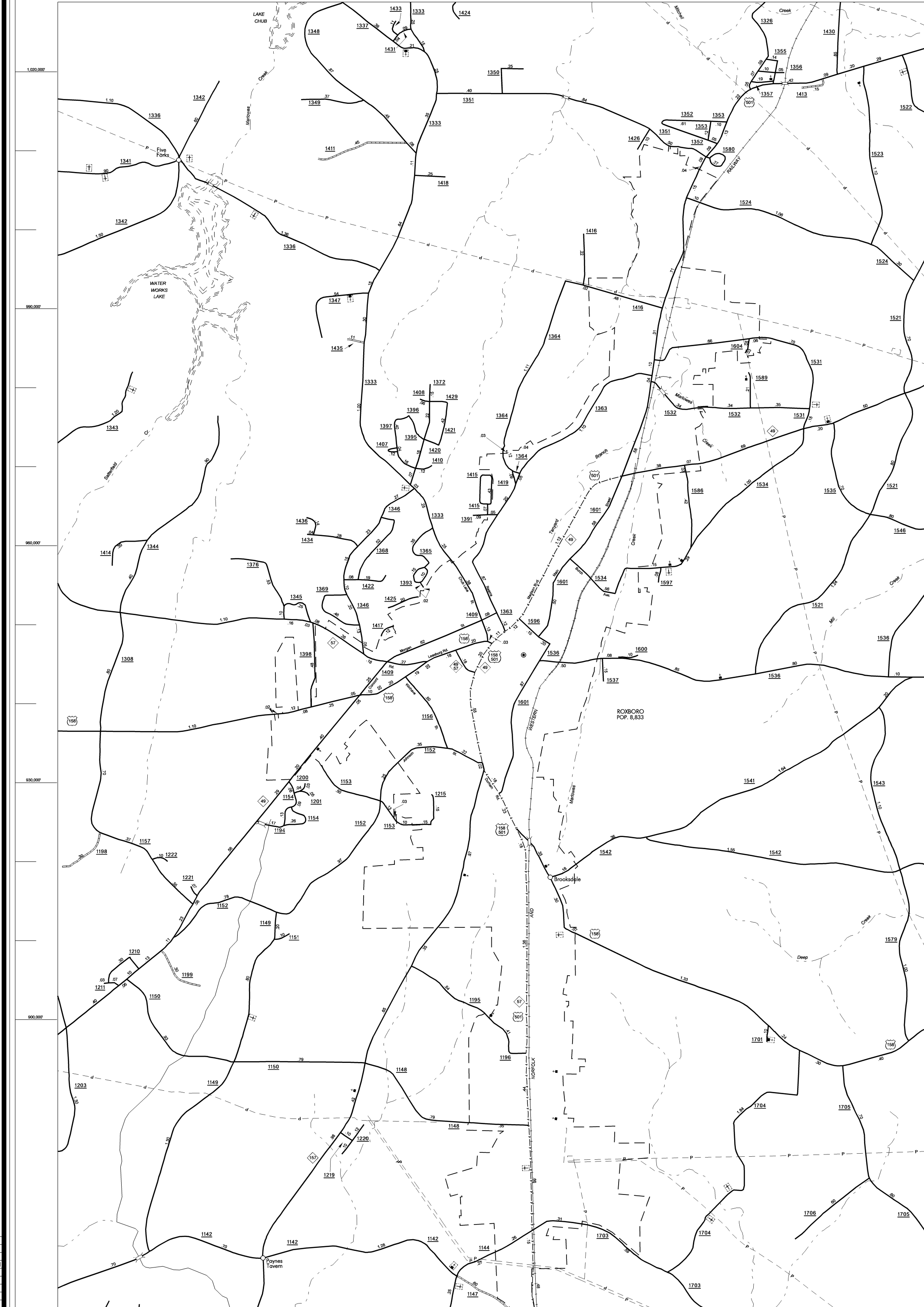


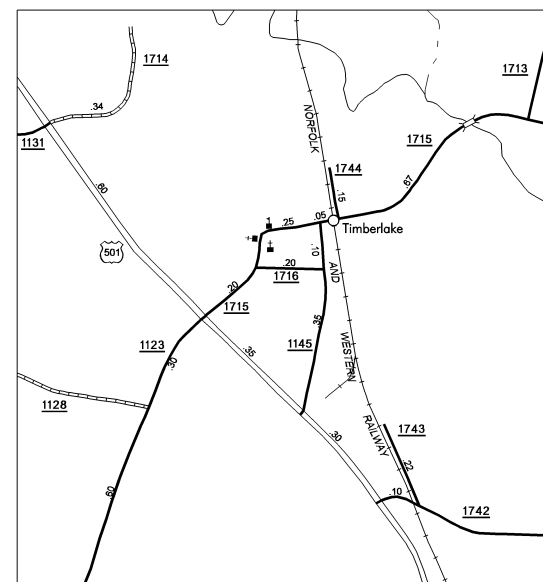
COPIES OF THIS MAP ARE AVAILABLE
TO THE PUBLIC AT A NOMINAL COST
ADDRESS:
N.C. DEPARTMENT OF TRANSPORTATION
114403 RLN
3401 CARR SANDBURG CT
RALEIGH, N.C. 27603

REVISED
5/2/02 RLN
9/23/02 RLN
12/18/02 RLN
1/14/03 RLN
3/28/03 RLN
5/3/04 RLN
8/17/04 RLN
8/15/05 RLN
12/13/05 MEM

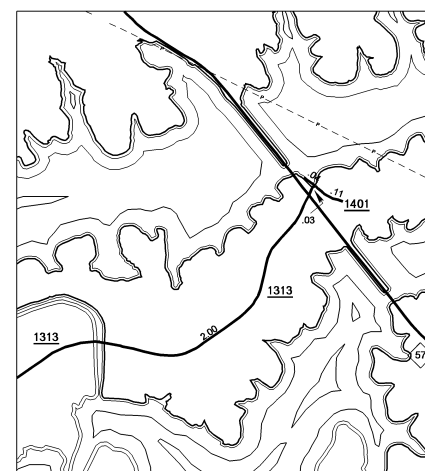
PERSON



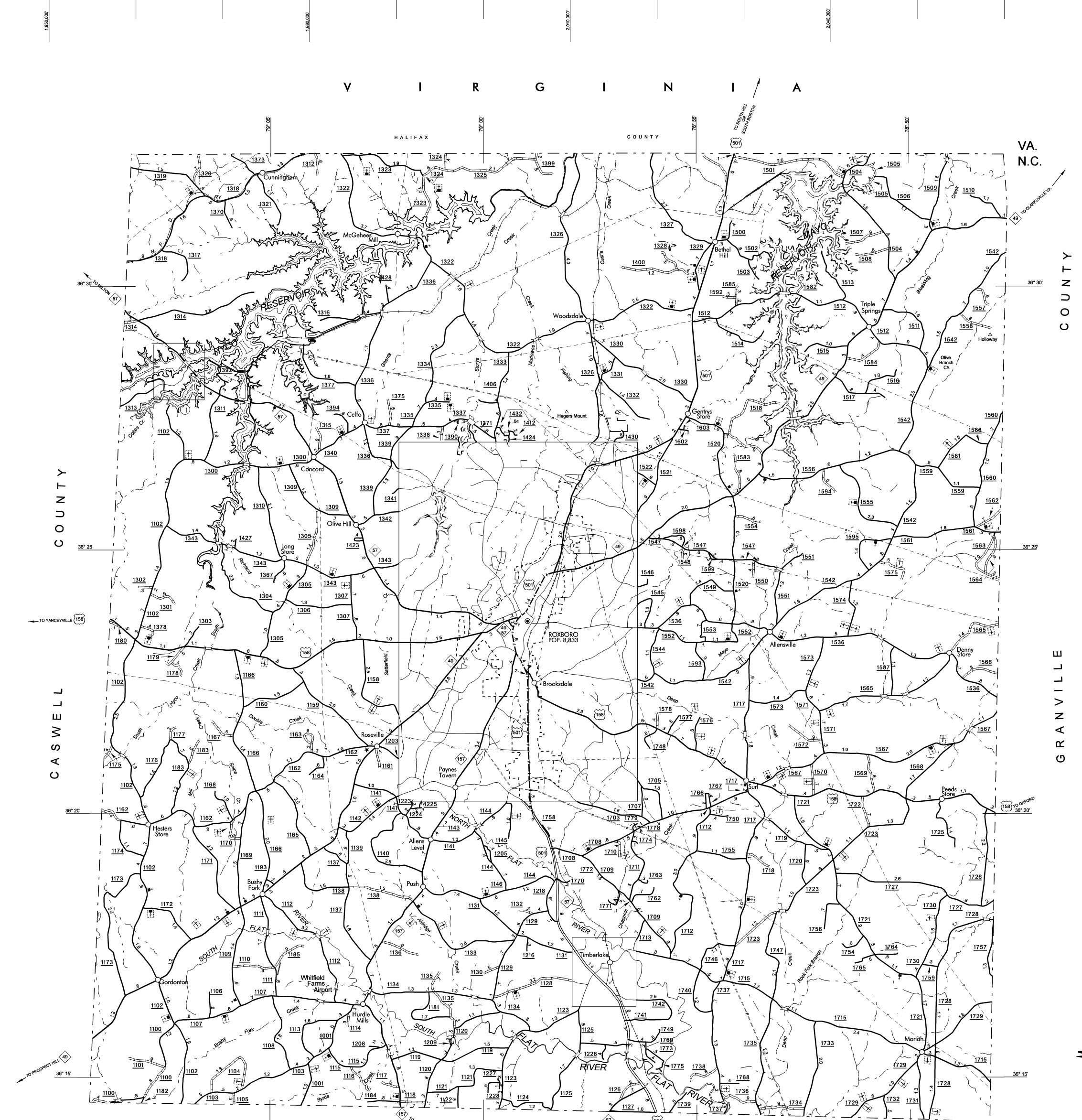
Roanoke and vicinity



Timberlake



Insert 1



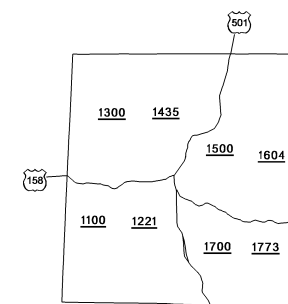
ORANGE

COUNTY

DURHAM

COUNTY

County Boundary alignments are based on
information provided by State and Federal
agencies, and are shown in their approximate
locations.



KEY TO COUNTY ROAD NUMBERS
ALSO NUMBERS 1100

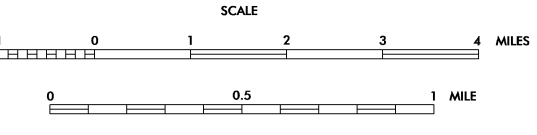
NOTE: MAP INCLUDES ONLY STATE MAINTAINED ROADS
OR IMPORTANT NON-SYSTEM ROADS.
ROADS SHOWN AS OF DEC. 13, 2005



PERSON COUNTY

NORTH CAROLINA

PREPARED BY THE
NORTH CAROLINA DEPARTMENT OF TRANSPORTATION
INFORMATION TECHNOLOGY - GIS UNIT
IN COOPERATION WITH THE
U.S. DEPARTMENT OF TRANSPORTATION
FEDERAL HIGHWAY ADMINISTRATION



SCALE FOR ENLARGEMENTS

10,000 FOOT GRID BASED ON NORTH CAROLINA PLANE COORDINATE SYSTEM
POLYCONIC PROJECTION