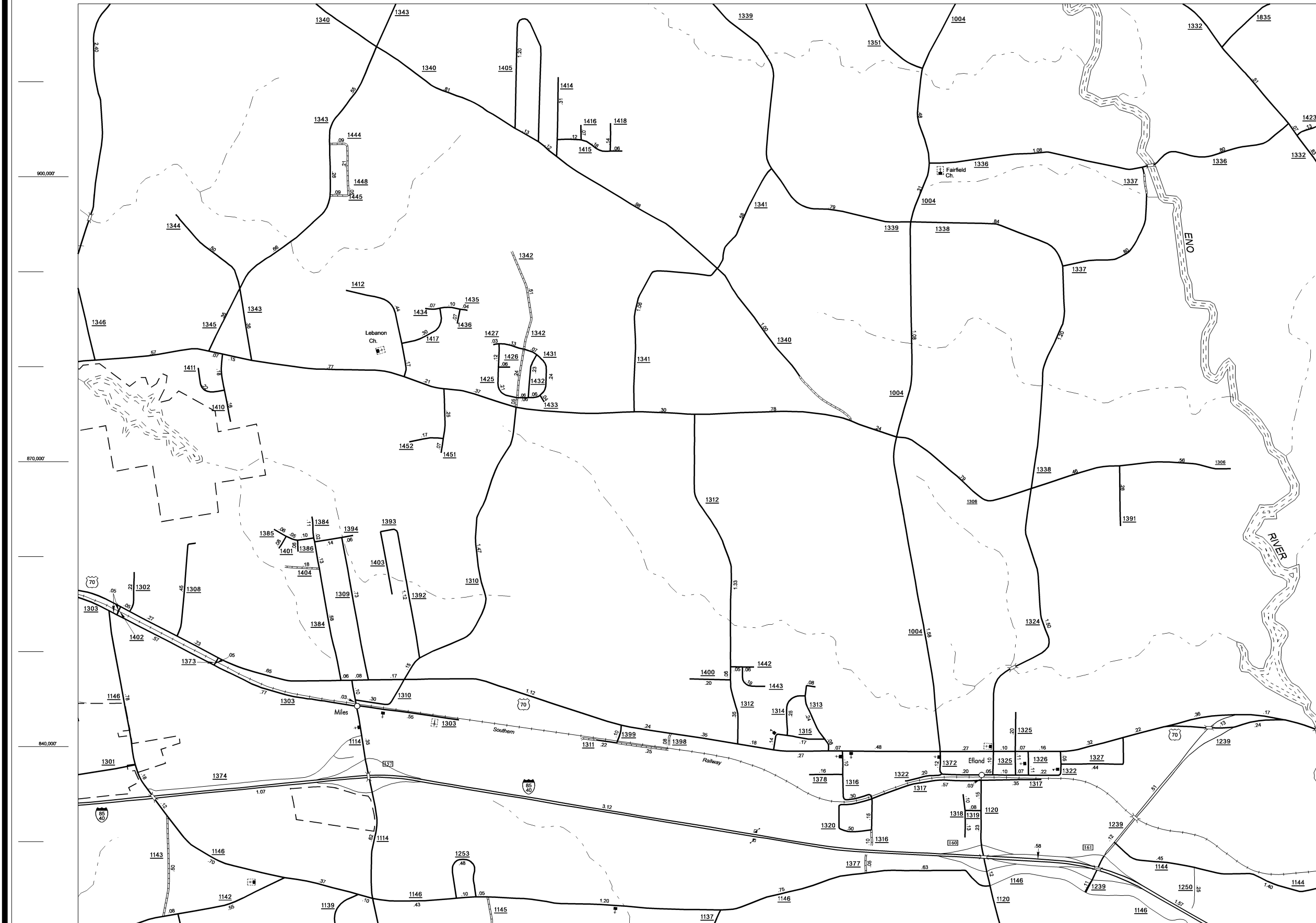


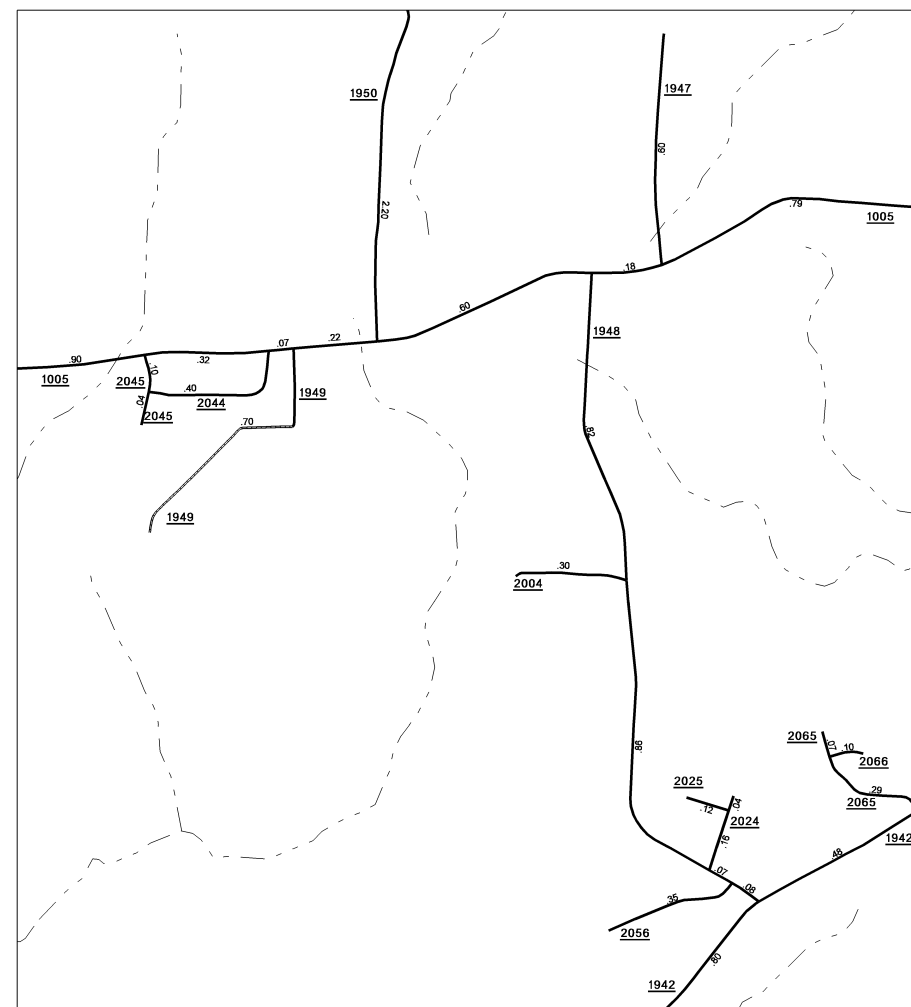
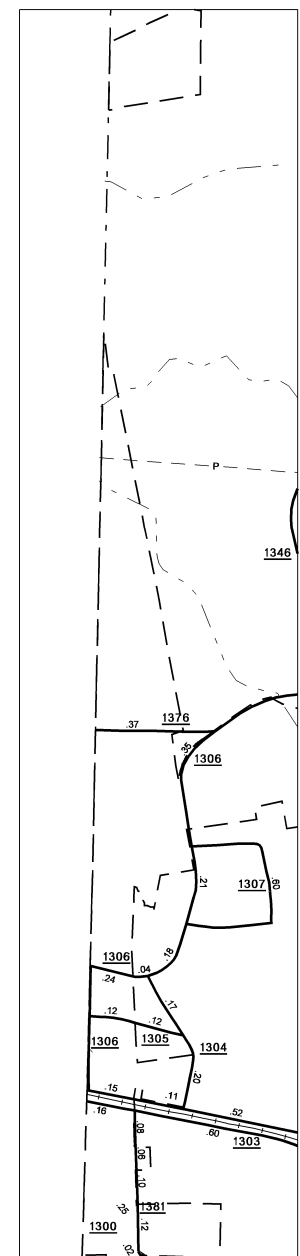
COPIES OF THIS MAP ARE AVAILABLE  
TO THE PUBLIC AT A NOMINAL COST  
ADDRESS:  
N.C. DEPARTMENT OF TRANSPORTATION  
INFORMATION SYSTEMS DIVISION  
3401 CARR SANITARIUM CT.  
RALEIGH, NC 27603

REVISED  
6/27/02 RLN  
11/6/02 RLN  
3/31/03 RLN  
8/27/03 RLN  
2/4/04 RLN  
5/12/04 RLN  
6/11/04 RLN  
7/12/04 RLN  
7/30/04 RLN  
10/1/05 RLN  
7/19/06 TRP

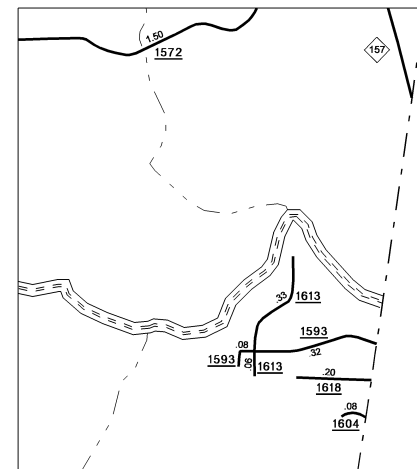
ORANGE



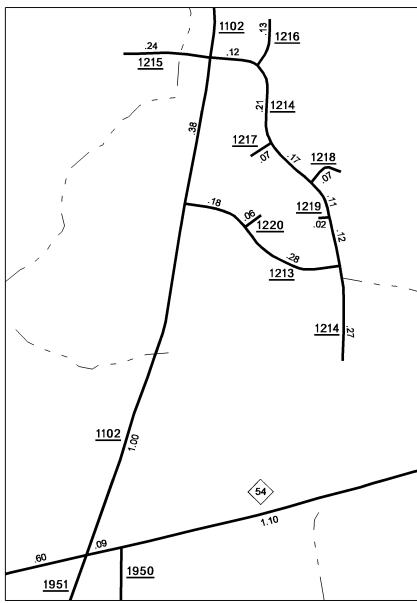
Eiland and vicinity



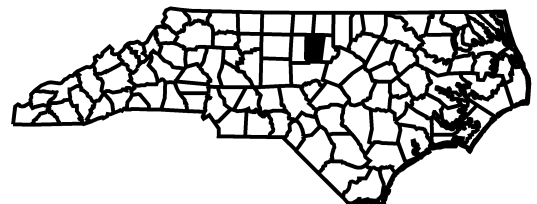
Inset 4



Inset 5

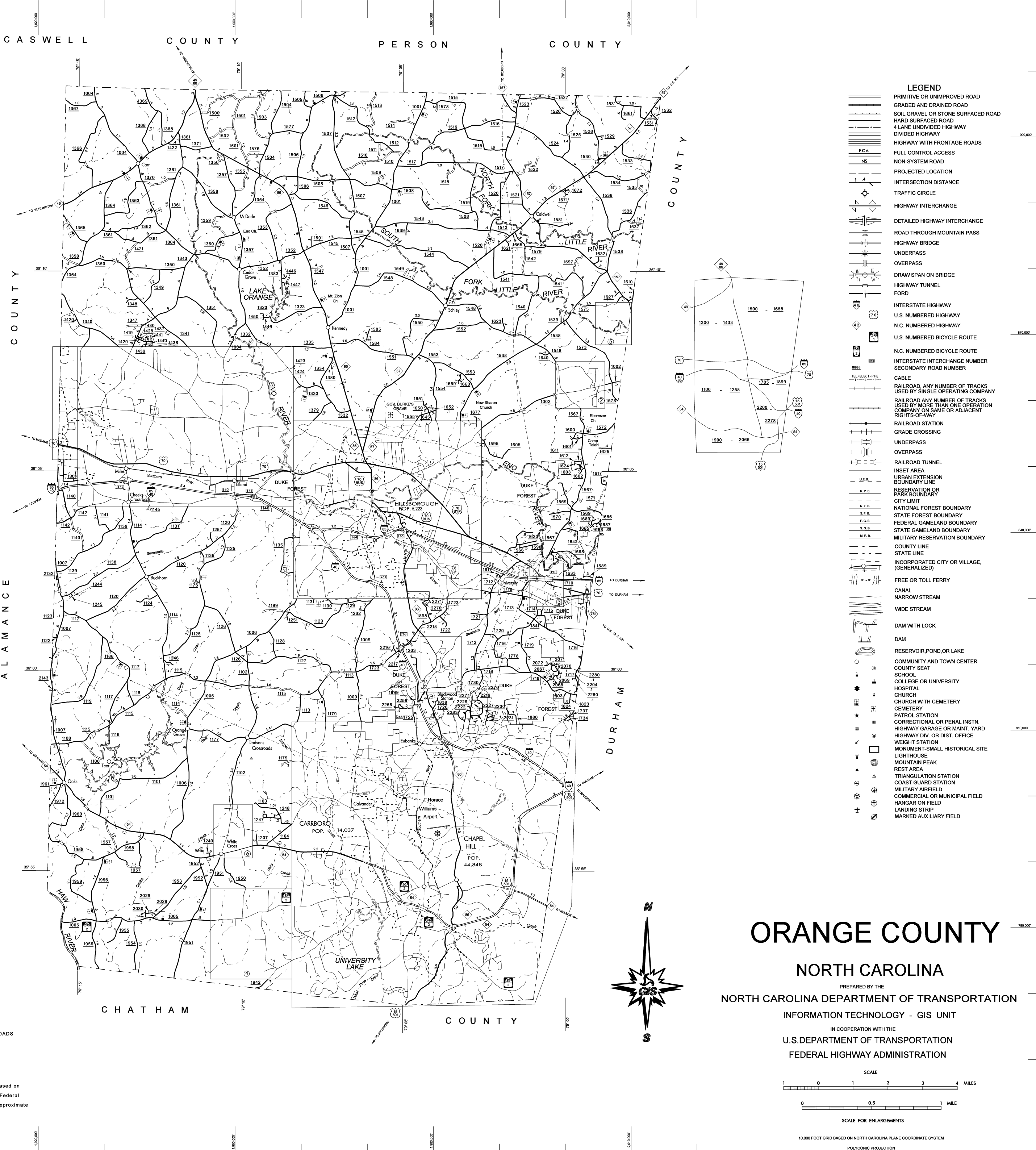


Inset 6



NOTE: MAP INCLUDES ONLY STATE MAINTAINED ROADS  
OR IMPORTANT NON-SYSTEM ROADS.  
ROADS SHOWN AS OF JULY 19, 2006.

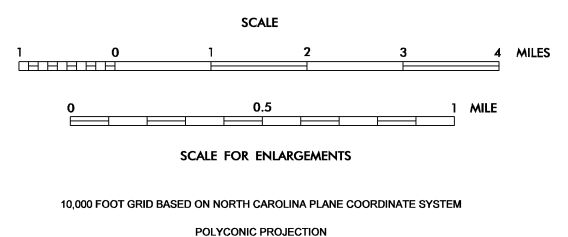
County Boundary alignments are based on  
information provided by State and Federal  
agencies, and are shown in their approximate  
locations.



# ORANGE COUNTY

## NORTH CAROLINA

PREPARED BY THE  
NORTH CAROLINA DEPARTMENT OF TRANSPORTATION  
INFORMATION TECHNOLOGY - GIS UNIT  
IN COOPERATION WITH THE  
U.S. DEPARTMENT OF TRANSPORTATION  
FEDERAL HIGHWAY ADMINISTRATION



SHEET 1 OF 2