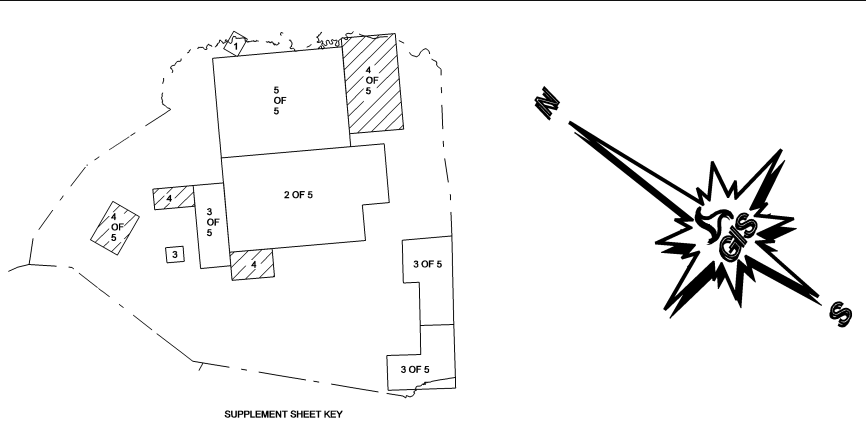
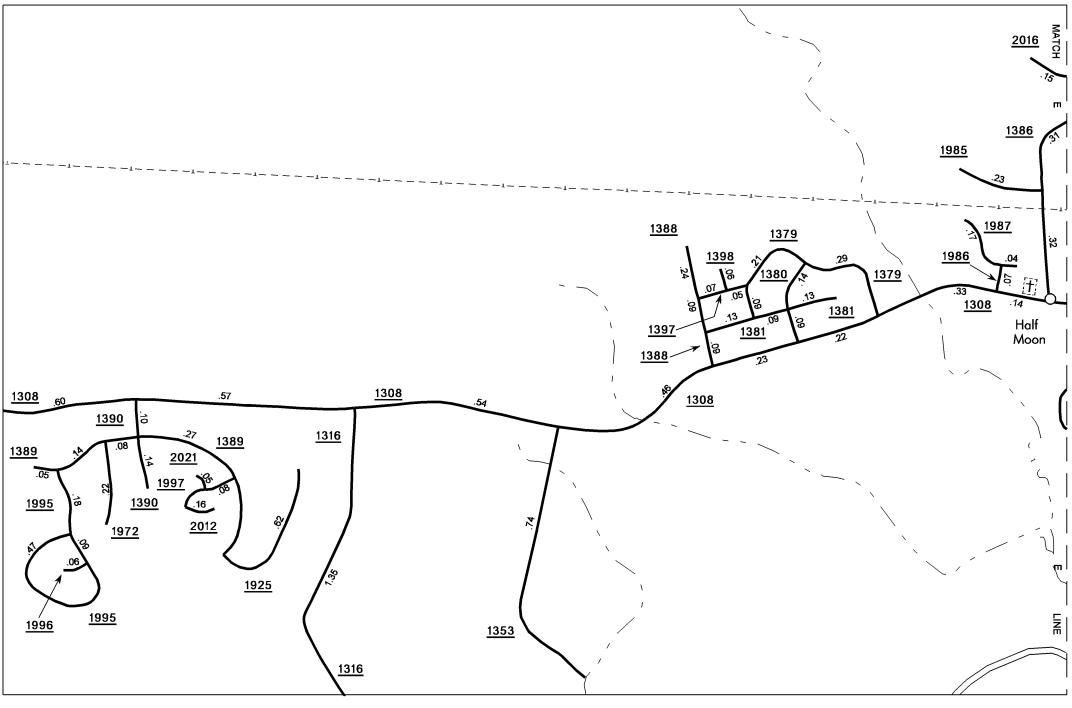
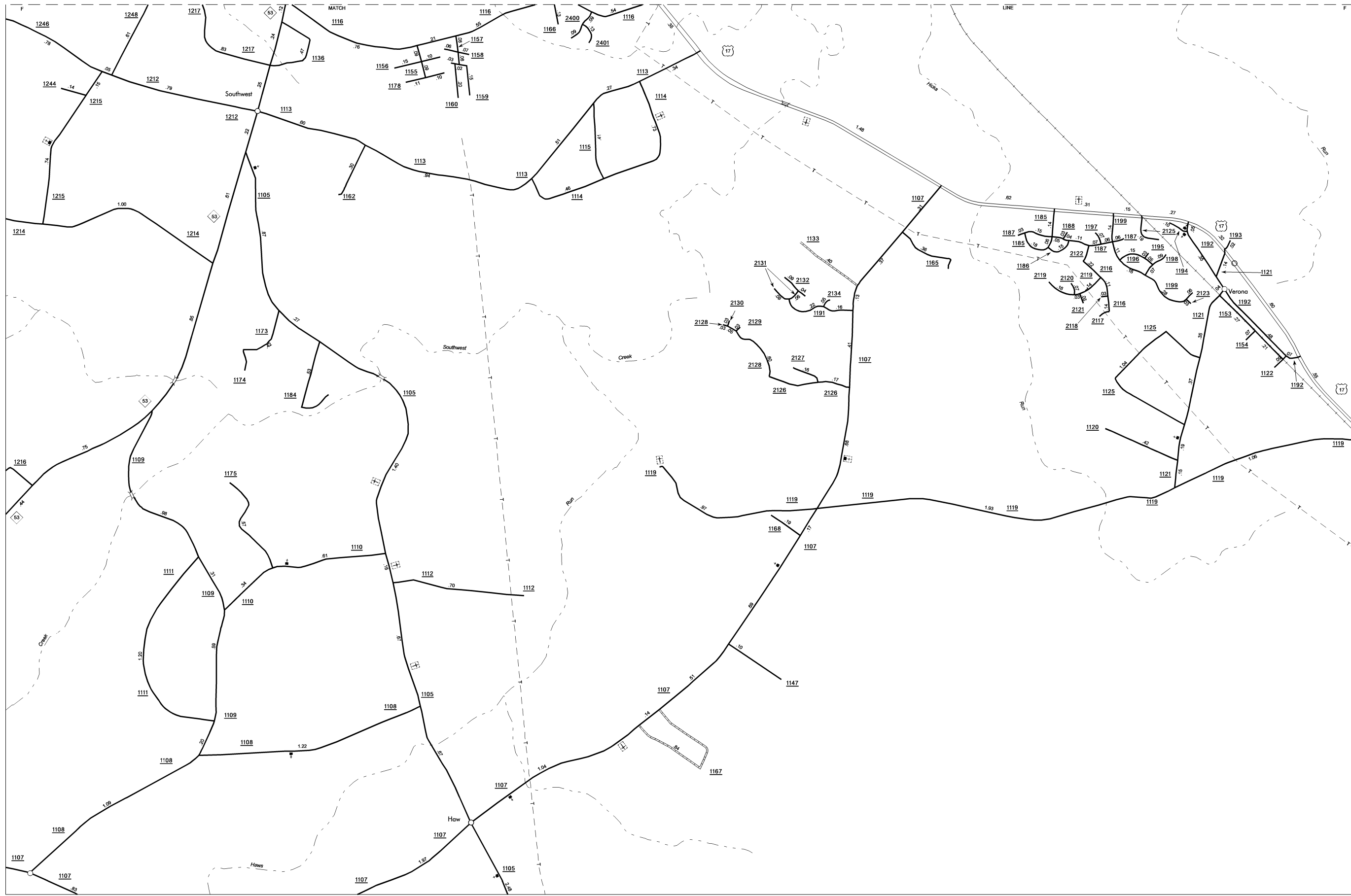
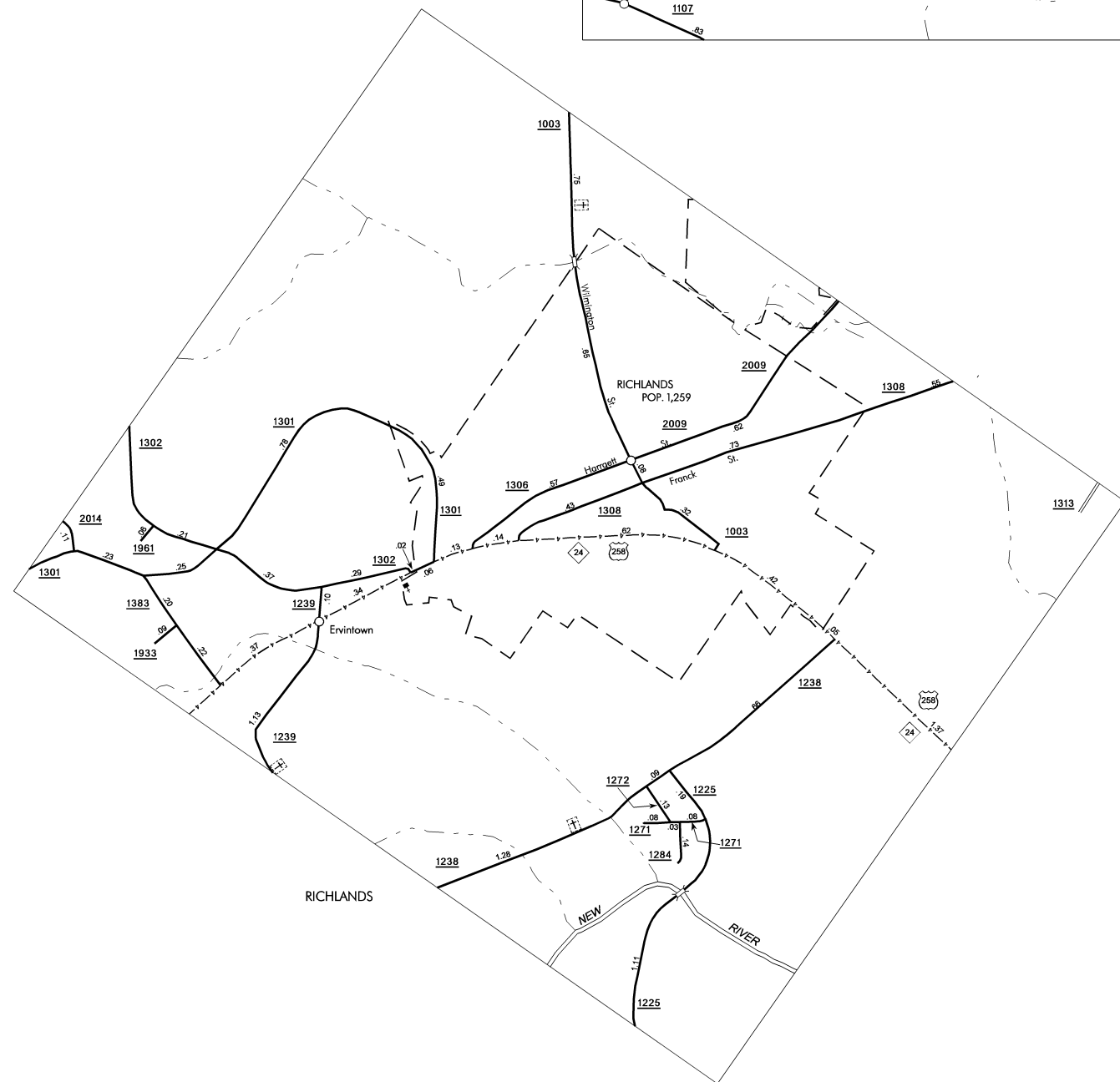
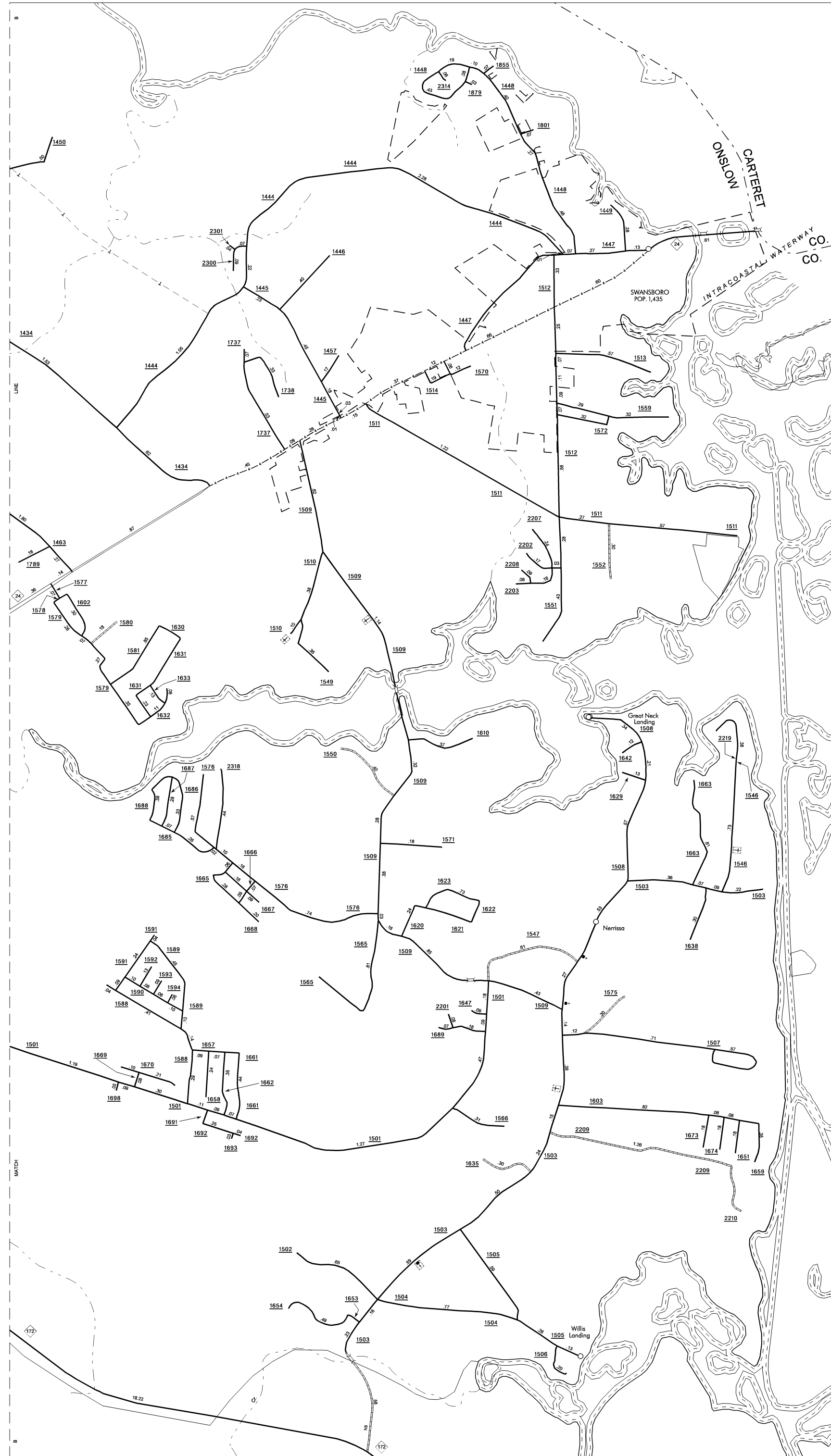


COPIES OF THIS MAP ARE AVAILABLE  
TO THE PUBLIC AT A NOMINAL COST  
ADDRESS:  
N.C. DEPARTMENT OF TRANSPORTATION  
SAFETY DIVISION  
3401 CARR SANDBURG CT  
RALEIGH, N.C. 27603

REVISED  
3/8/02 MEM  
7/8/02 MEM  
7/31/02 MEM  
3/31/03 RLN  
6/16/04 BCH  
7/14/04 BCH  
1/25/05 BCH  
10/31/05 BCH  
3/1/06 BCH



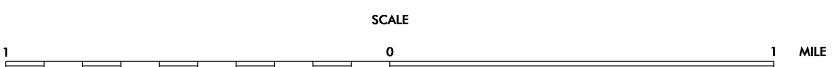
ENLARGED MUNICIPAL AND SUBURBAN AREAS

# ONSLOW COUNTY

## NORTH CAROLINA

PREPARED BY THE  
NORTH CAROLINA DEPARTMENT OF TRANSPORTATION  
INFORMATION TECHNOLOGY - GIS UNIT

IN COOPERATION WITH THE  
U.S. DEPARTMENT OF TRANSPORTATION  
FEDERAL HIGHWAY ADMINISTRATION



10,000 FOOT GRID BASED ON NORTH CAROLINA PLANE COORDINATE SYSTEM  
POLYCONIC PROJECTION