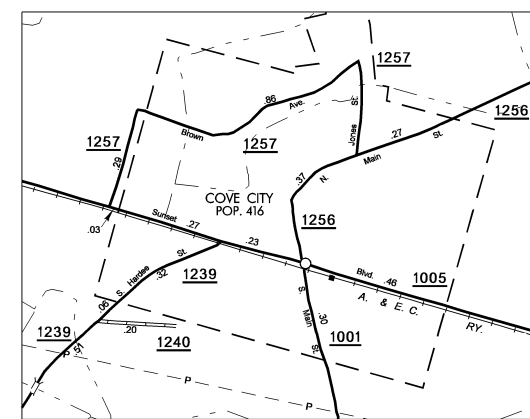
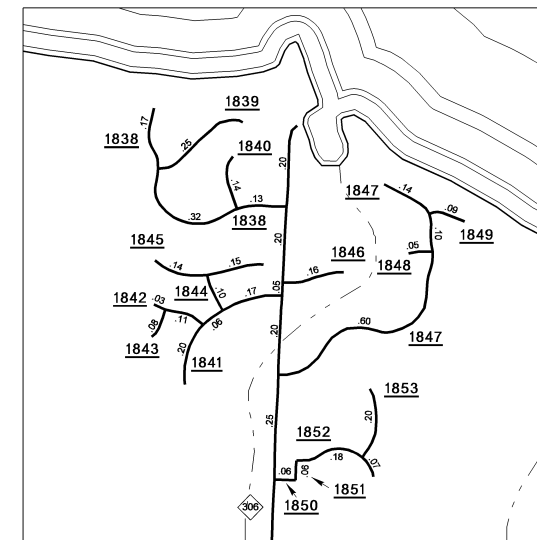


COPIES OF THIS MAP ARE AVAILABLE
TO THE PUBLIC AT A NOMINAL COST
ADDRESS:
N.C. DEPARTMENT OF TRANSPORTATION
1200 S. SHELBY ST.
SAFARI CAMP, SANDHURST, NC 27084
FAX: 704/329-7270

REVISED
4/17/92 MSG
11/14/92 MSG
11/20/93 MSG
1/29/95 MSG
5/20/94 MSG
12/15/94 RLN
2/8/95 MSG
3/3/95 MEM
6/9/95 MEM
6/13/95 MSG

CRAVEN
SHEET 1



ENLARGED MUNICIPAL AND SUBURBAN AREAS

CRAVEN COUNTY

NORTH CAROLINA

PREPARED BY THE
NORTH CAROLINA DEPARTMENT OF TRANSPORTATION
INFORMATION TECHNOLOGY - GIS UNIT

IN COOPERATION WITH THE
U.S. DEPARTMENT OF TRANSPORTATION
FEDERAL HIGHWAY ADMINISTRATION



SCALE
1 0 1 MILE

10,000 FOOT GRID BASED ON NORTH CAROLINA PLANE COORDINATE SYSTEM
POLYCONIC PROJECTION

SHEET 2 OF 3